

FFA hog show results posted at York Fair

YORK — York County's Future Farmers of America who take special interest in swine projects competed here this week in both market hog and breed shows. Champions in the breeding division were exhibited by Greg Innerst, Bryan Grove, Tom Innerst, Jeff Rexroth, all from the

Red Lion FFA Chapter, and Tim Rehman from the Kennard-Dale Chapter.

Dan Boyl, Northern FFA, was the victor in the market swine contest, while David Leese of Southwestern took the reserve honor.

Following are more detailed results:

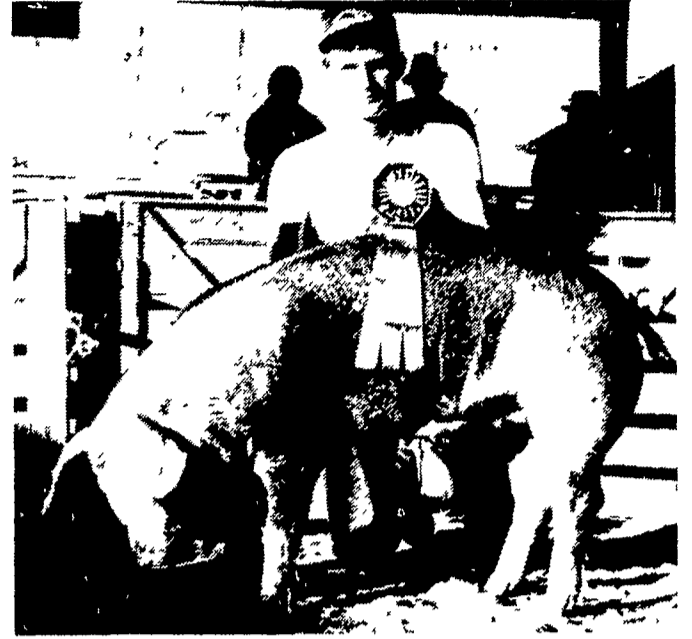
In Berkshire competition,

Greg Innerst, 15, son of Mr. and Mrs. Fred O. Innerst, dominated the show with first-place entries for January, February, and March pigs. His senior sow pig was named grand champion. The February sow was reserve grand.

Innerst, a student at Red Lion High School, has been

working with swine projects since 1976 and has won his Star Greenhand Award.

Tom Innerst, son of Mr. and Mrs. Jacob Innerst, Red Lion, exhibited the champion and reserve champion Duroc sow. The champion was a February animal while the reserve entry was entered in the March class.



Tom Innerst, a student at Red Lion High School, had the Duroc champion among FFA competitors at the York Fair.

Larry Robinson of Kennard-Dale won the January sow contest and David Leese of Brodbeck's R1 took the blue ribbon in the April class.

The champion Hampshire exhibitor was Jeff Waltemyer of Red Lion. He exhibited a junior yearling. A February sow exhibited by Clay Tyson, also of Red Lion, was awarded the reserve prize.

In Chester White competition, Bryan Grove of Red Lion showed a January sow

to the top spot. Blaine Grove, also of Red Lion, had the reserve champion, a February sow. David Leese showed the first-place animals in the March and April classes.

Tops among Spotted Swine was an entry by Jeff Rexroth, Red Lion, whose senior yearling edged a March sow exhibited by Larry Robinson. Robinson's entry was selected reserve champion. The young man

(Turn to Page 30)

We're *revved up and running*



to save you thousands on a new MF combine!

LOW, LOW PRICES

Very special prices on very good combines, all brand new, with Massey-Ferguson quality. Low prices apply to your choice of grain table or corn head, too.

\$1,000 CUSTOMER BONUS

Every combine buyer gets a special Certificate worth \$1,000 on the purchase of any new MF tractor, implement or baler (good through April 27, 1979). It's as good as cash, so look over your future needs and act now!

SAVE ON FINANCING

You'll pay no finance charges until April 1, 1979 when you finance your new combine through Massey-Ferguson Credit Corporation. That will save you plenty — ask us how much!

EXTENDED WARRANTY

The standard MF warranty has been extended to November 1, 1979 on MF combines purchased now through October 1978 (except on machines used for custom harvesting). See us for complete details.



These special combine offers expire October 31, 1978.

Personalized MF financing, parts, and service available.

S. G. LEWIS AND SON
West Grove, PA
Ph (215) 869-9440
869-2214

RICE FARM SUPPLY INC.
Rt 220 Bypass
Jersey Shore, PA
Ph (717) 398-1391

PAUL J. EICHERT & SON
RD 1,
Orwigsburg, PA
Ph (717) 943-2304

LEBANON VALLEY IMPLEMENT CO.
700 E Linden St.
Richland, PA
Ph (717) 866-7518

RHODES EQUIPMENT CO., INC.
1085 Industrial Blvd
Southampton, PA
Ph (215) 677-6000

MARLIN W. SCHREFFLER
Pitman, PA
Ph (717) 648-1120

N. H. FLICKER & SON, INC.
Maxatawny, PA
Ph (215) 683-7252

M. M. WEAVER & SON
N Groffdale Rd
Leola, PA 17540
Ph (717) 656-2321

PETERMAN FARM EQUIPMENT
225 York Road
Carlisle, PA
Ph (717) 249-5338

GUS FARM EQUIPMENT, INC.
Intersection 214-616
Seven Valleys, PA
Ph (717) 428-1967

ISENNOCK SERVICE CENTER
Rte 24 & Plank Rd
Stewartstown, PA
Ph (717) 933-2523

ARNETT'S GARAGE
Rt 9 Box 125
Hagerstown, MD
Ph (301) 733-0515

BLIZZARD WARNING!

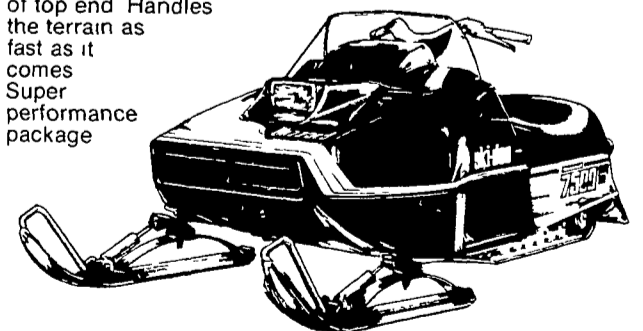
New ski-doo BLIZZARD® 9500 PLUS

Trail Lake Flats
Own them all with the hot new twin from Ski-Doo
Liquid-cooled engine
Slide suspension,
wide-stance skis,
and racer styling
let you be
a blur on
the trail



New ski-doo BLIZZARD® 7500 PLUS

High-performance twin
Liquid cooled Dependable
Rotax power with plenty
of top end Handles
the terrain as
fast as it
comes
Super
performance
package



**SHADY MAPLE
LAWN & GARDEN CENTER**
AT JOHN L. STAUFFER REPAIR SERVICE
GOODVILLE, PA PH: 215-445-6175

Trademarks of Bombardier Limited



ski-doo
snowmobiles