

NEED A FARM- URBAN-COMMERCIAL BUILDING?

**Call Your
HUSKEE-BILT MAN!**



Also Ask About Our
CONTROLLED ENVIRONMENT BUILDING

A Thrive Center controlled environment building means heavier, healthier animals, reduced labor and feed costs and almost no manure handling or odor. They pay for themselves in no time!



**YOUR
HUSKEE-BILT MAN
MERVIN MILLER**
RD2, Keener Road,
Lititz, Penna.
Phone (717) 626-5204

Sheep show champions chosen at Solanco Fair

By **KENDACE BORRY**
QUARRYVILLE — Billy MacCauley, Atglen R1, a 13 year old member of the Golden Fleece 4-H Club of Chester County, took top honors at the Solanco sheep show, winning the championship in the fitting contest, and having the champion Shropshire ewe, and the champion Suffolk ewe. He also placed second in the senior showmanship class, and had the top pen of three market lambs and the top lightweight market lamb.

He and his sister Nancy took the top awards in all the Suffolk breed classes at the show.

The champion Cheviot ewe was shown by Julie Randall, Holtwood R2, the ten year old daughter of Mr. and Mrs. John Randall. This was the young lady's first sheep show.

This was the first time, too, for Barbara Rohrer, Quarryville R2, to show her Southdown ewe lamb, and

she took the championship in that division, placing over her older brother Gerald, who had the champion ram, and placed first in the junior

division of both the fitting and the showmanship classes.

Thomas Muller, Delta R2, had the champion Hamp-

shire ewe, with his brother Danny, taking the reserve champion honors. The two split the honors in the ram

(Turn to Page 31)



The champion Hampshire ewe was shown by Thomas Muller, 13, of Delta R2. Billy MacCauley, Atglen R1, showed his Shropshire ewe lamb to be named champion in that breed.



"THE DIESEL WITH A DIFFERENCE"

Cuts your power costs because it's way ahead of its time on all points.

AVCO-VM diesel engines are world-proven money-savers. They deliver maximum power efficiency immediately, under any sudden load or climate variation. Their higher power to weight ratios mean **NO REDUCTION IN HORSEPOWER** to qualify for pollution standards.

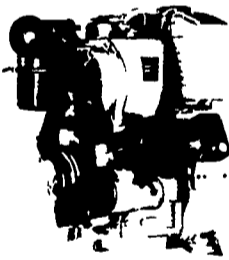
They're stingy on fuel, too. Many users report fuel consumption **CUT IN HALF** — and more — compared with gasoline engines. In some installations, our diesels are delivering more than

TWICE the hours of operation per gallon of fuel.

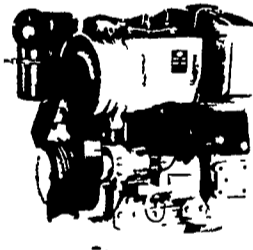
Faultless performance is the norm, rather than the exception. A choice of 27 premium quality air-cooled Avco-VM's (5 to 670-hp) means there's one that's right for your application.

Modular, unitized construction means fewer specialized parts, lower weight per hp, lower maintenance costs, 70% parts interchangeability — and they'll fit the tightest space.

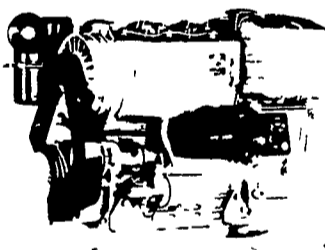
1050 SU SERIES



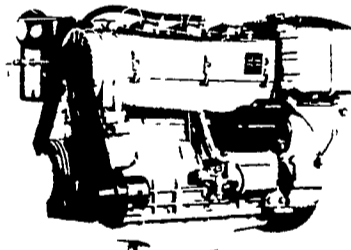
2800 R.P.M.
22 SAE HP
20 DIN HP



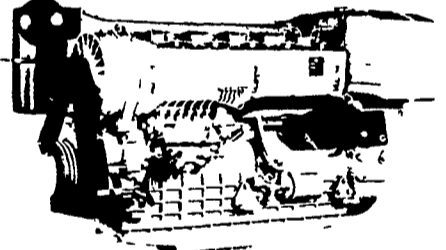
2800 R.P.M.
44 SAE HP
40 DIN HP



2800 R.P.M.
66 SAE HP
60 DIN HP

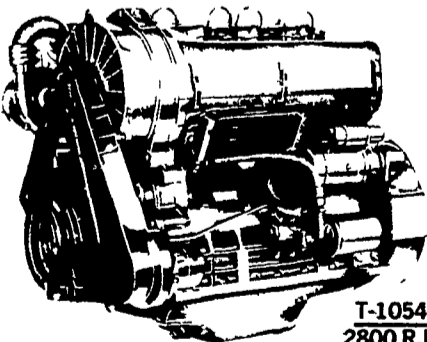


2800 R.P.M.
88 SAE HP
80 DIN HP

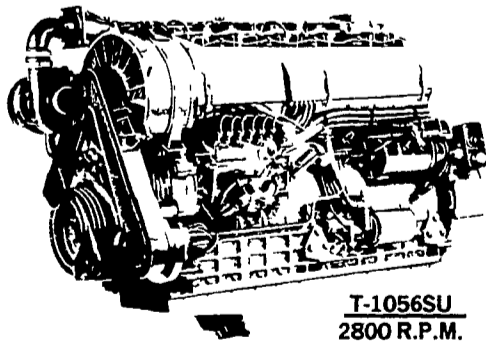


2800 R.P.M.
132 SAE HP
120 DIN HP

T 1050 SU SERIES

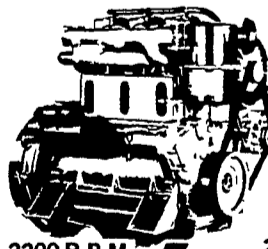


T-1054SU
2800 R.P.M.
106 SAE HP
98 DIN HP

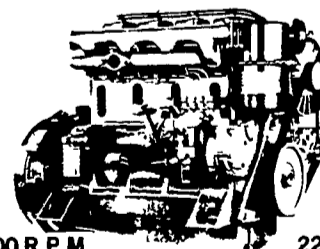


T-1056SU
2800 R.P.M.
160 SAE HP
147 DIN HP

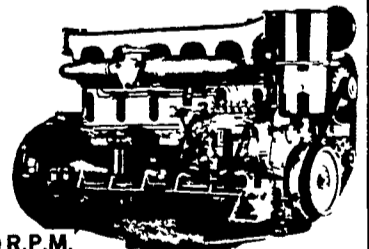
DAN SERIES



2200 R.P.M.
79 SAE HP
72 DIN HP



2200 R.P.M.
105 SAE HP
96 DIN HP



2200 R.P.M.
155 SAE HP
144 DIN HP

**USED
DIESELS**

- 1 - Cyl. Deutz
- (2) DVA 1500 Stanzis
- (2) SR2 Lister
- ST-2 Lister - Used 8 Months

THE "RIGHT FROM THE START" DIESEL ENGINE LINE FOR FAULTLESS PERFORMANCE.

QUEEN ROAD REFRIGERATION

BOX 67, INTERCOURSE, PA. 17534

PHONE: 717-768-9006

AFTER 5 PM — JOHN D. WEAVER 768-8355

Gid Diener 768-8521

Sam Stoltzfus 768-3594

Or Answering Service 354-4374

**24 HOUR
SERVICE**