

Emergency loan procedures change

HARRISBURG -- Modifications in procedures for making Farmers Home Administration Loans to disaster victims would save affected farmers time and

trouble, according to State Agriculture Secretary Kent D. Shelhamer.

The new procedures, which have followed the passage of Public Law 95-

334, give power to the FmHA State Director to implement the Emergency Loan Programs when a disaster strikes one or more farmers. After the occurrence of a

natural disaster, following an assessment of the damage by county Disaster Committees, the State FmHA Director can immediately begin the emergency programs for those farmers who are affected.

Shelhamer called the passage of P.L.95-334 "a positive first step in eliminating the many problems farmers face when dealing with federal disaster assistance programs." The new provisions should not only cut bureaucratic red-tape and reduce waiting time, but also enable more farmers to become eligible for Emergency Loan Programs.

"In the past, when just a few farmers were hit, it was often difficult to get the attention of state and federal officials. These new procedures should allow us to deal on a more personal basis within the state and improve the effectiveness of these emergency programs."

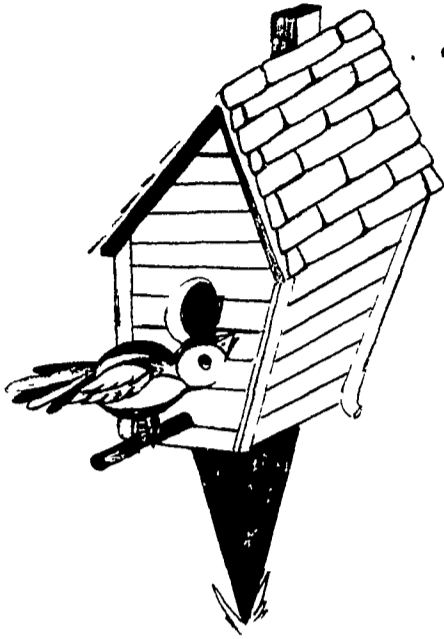
P.L.95-334 eliminates the need for a Governor's request and approval by the Secretary of the U.S. Department of Agriculture prior to implementation of

the Emergency Loan Program after a natural disaster. However, when the President declares a major disaster, such as the floods of 1972 and 1975 or when USDA makes an emergency declaration, the Emergency Loan Program will continue to operate as before.

The Agriculture Secretary noted that Emergency Loan Interest rates are scheduled to increase on October 1 from three to five per cent for actual losses and to 8.5 per cent for financing above actual losses from the disaster.

IS YOUR HOUSE PROPERLY

— INSULATED? —



- Chicken House
- Turkey House
- Farrowing House
- or Any Other House

For

FREE

Estimate Call:

Fuel Savers

of

York

(717) 244-0762

Top selling boar brings \$1600

HARRISBURG — Approximately 300 people were in attendance at Pennsylvania's first Performance Tested Boar Sale which was held at the Pennsylvania Department of Agriculture's Meat Animal Evaluation Center, according to Kent Shelhamer, Secretary of Agriculture.

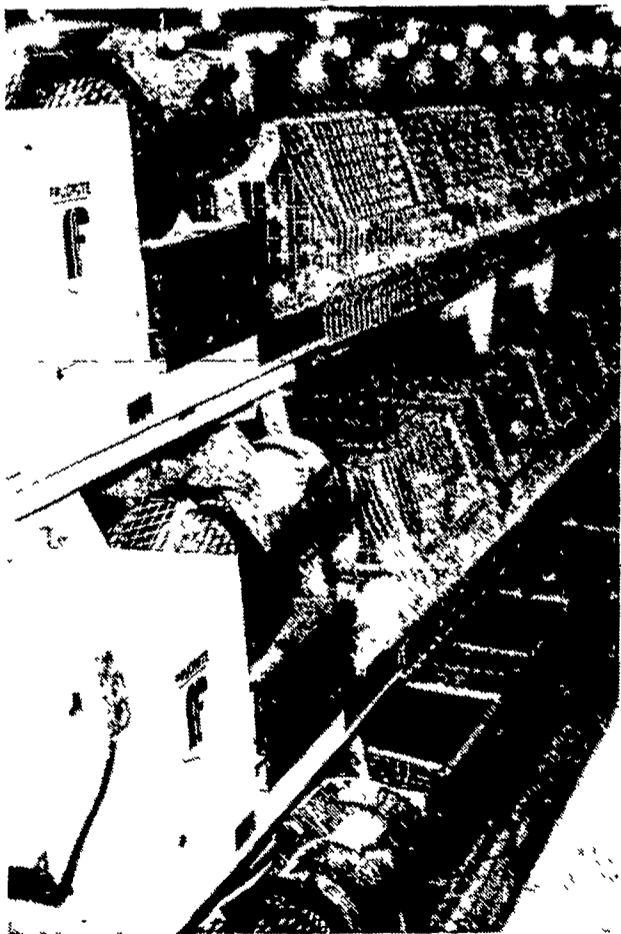
The top selling boar was the high indexing Yorkshire boar owned by Brooks End Farm of Beavertown, Pennsylvania, and selling to Leon Arnold of Lebanon, Pennsylvania for \$1600. Brooks End Farm also had the second high selling boar on a Yorkshire selling for \$700 to C. M. Miller of Williamsport, Maryland.

The third high selling boar was the top indexing Duroc boar owned by Bourbon Springs Farm of Newville, Pennsylvania. He sold to Omar Beam of Elverson Pennsylvania for \$670.

Two Chester White boar averaged \$310, eleven Duroc boars averaged \$456.81, two Hampshire boars average \$280, six Landrace boar averaged \$339.16, one Spotted boar sold for \$270 and thirteen Yorkshire boar averaged \$504.23.

The average price paid for the 35 boars which sold was \$430.43, with buyers from Pennsylvania, New York, Maryland and Vermont.

FAVORITE



LIFESTYLE SYSTEMS

FAVORITE MFG., INC.

New Holland, Pa. 17557 USA

POULTRY EQUIPMENT

LOCALLY MANUFACTURED BY EXPERIENCED PEOPLE

FAVORITE START GROW SYSTEMS

FEATURES:

- Double galvanized back-bottom.
- Unique start-grow cage front design.
- Start-grow cage bottom with 1" x 1" wire.
- Grow cage bottom with 1" x 2" wire.
- Start-grow cages notched for waterers.
- Start-grow cage waterers adjustable from outside of cage.
- Swinging cage doors lock open or closed.
- Partitions designed to eliminate bird movement between cages.
- Galvanized feed-saver chick guard.
- Flat chain and trough feeding.
- Feeding speeds up to 60 feet per minute.
- Hi-Torq speed reducer with three year warranty.
- Adjustable positive-lock hopper feed gate.
- Positive feed return to feed hopper.
- Rugged feed-chain corner assemblies.
- Unique feed manifold.
- Works well with heating system of your choice.
- 24" wide, 26" deep, 14" high.
- 30" wide, 26" deep, 14" high.

FAVORITE



FAVORITE ...

AN EXPERIENCED COMPANY WITH QUALITY PRODUCTS.



AUTHORIZED DISTRIBUTOR

EBERSOLE EQUIPMENT & SUPPLY COMPANY
MANHEIM, PENNSYLVANIA

(717) 665-4201