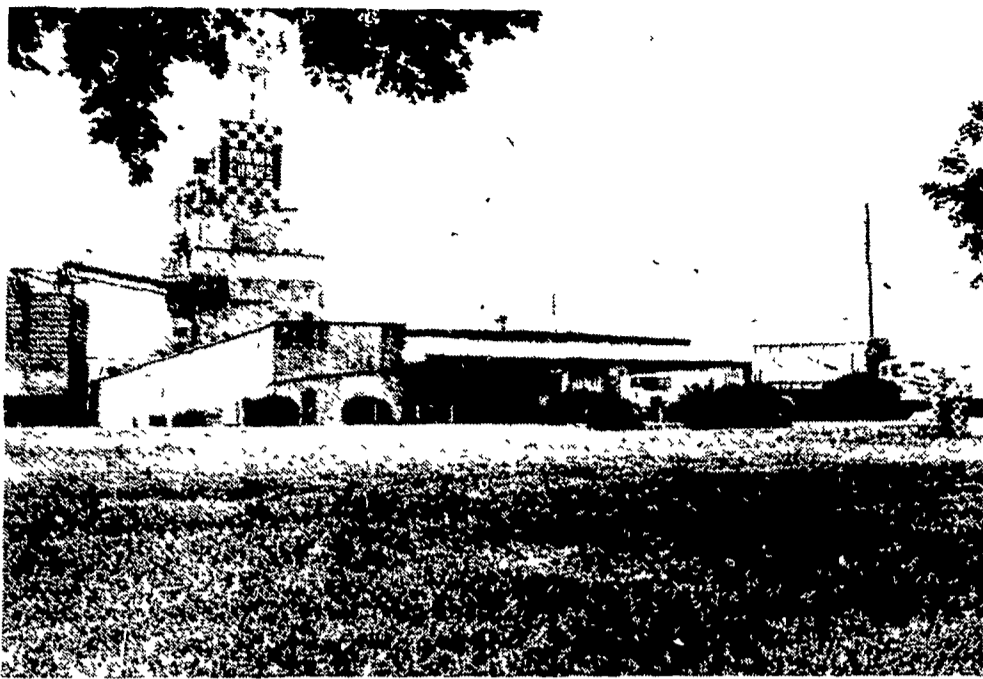


Senator's trophy given



Expanded warehousing and loading facilities will be built to the front of the present storage area, above foreground. The expansion project of the Camp Hill mill is the largest ever undertaken by Purina.

Purina expanding Camp Hill mill

ST. LOUIS, Mo. — It was announced recently by Warren W. Elfrank, Director of Operations-North Atlantic Area for Ralston Purina's Chow Division, that the Company's Board of Directors had approved a major capital expansion and renovation program for its Harrisburg, Pa. feed plant. According to Elfrank, "This is the largest major expansion and renovation of an operating Chow plant in the

history of the Company, and will enable us to serve our dealers more effectively in the future."

Among the improvements to be made are: increased storage capacity in the existing bulk station; 15,000 additional square feet of sack warehouse space; the addition of a new computer controlled batch mixing system; a new truck dumper and scale; and the replacement of the present

horse and dairy coarse feed unit. Other improvements include: the relocation of electrical starters, control centers and electrical feeder lines; a new mill office and quality assurance laboratory; and renovation of the employee lunch room and locker area.

Elfrank explained that

FLEMINGTON, N.J. — The 1978 New Jersey State Senator's Trophy award was presented to Betsy Buchanan, 18, of Stockton, on Governor's Day at the Flemington Fair. The presentation was made by Senator Walter Foran of Flemington.

The State Senator's Trophy was instituted in 1972 by Senator William Schuler. The three basic standards for making this annual award are, leadership, citizenship, and community service projects.

Betsy is a member of the Hunterdon County 4-H Junior Leaders Association, the Hunterdon County 4-H Sheep Club, and the Sifting

there would be periods that different units of the mill would be temporarily closed as the various improvements are made. All dealers will be kept completely up-to-date on timetables and completion dates. "We are very excited about this expansion and sincerely believe it is ample evidence that we at Ralston Purina Company believe our dealer organization and many loyal customers in the North Atlantic Area are among the finest in the United States," he said.

Stitchers 4-H Club. Her projects are leadership, citizenship, public speaking, sheep, foods, clothing, and square dancing. She has been a camp counselor, served on the North Jersey Youth Conference planning committee, organized the 4-

H Farm-City Exchange with Bergen County this year, and has chaired many other committees involved with her 4-H projects.

She is president of the 4-H Sheep Club and vice president of the Hunterdon County 4-H Junior Leaders.

Sheep Council sets meeting

DENVER, Colo. — The American Sheep Producers Council (ASPC) will feature Barbara L. Schlei, administrator of the USDA Agricultural Marketing Service (AMS) as keynote speaker at its 25th annual meeting. Administrator Schlei will address ASPC delegates and directors in Denver on the morning of October 18. The delegates and directors will review current Council programs

and discuss future plans on the 18th and 19th.

As head of the AMS, Administrator Schlei oversees a wide variety of agricultural marketing programs, including self-help promotion programs such as ASPC. The agency is responsible for regulatory programs for the market place and programs aimed at helping balance supply and demand of agricultural commodities.

Adjust to high production

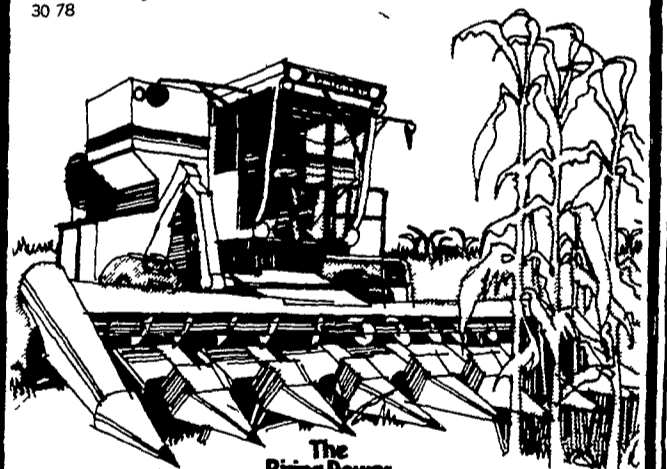


Low-profile Allis-Chalmers adjustable corn heads.

More speed. Less ear loss. Less clogging. More productivity. These are pleasant adjustments you can make with an Allis-Chalmers adjustable corn head in 2, 3, 4, 5, 6 or 8 row sizes. Low-profile dividers slide between rows and under the lowest hanging ears. Gently sloped gather sheets reduce whipping and minimize hair pinning. And rubber ear deflectors snatch bouncing ears and direct them into the gathering chains. Each row unit is individually mounted on a heavy-duty 5" x 5" tool bar and can be adjusted 2" either way from center (8-row adjustments from 828 to 830 only).

See how easy it is to adjust your productivity, and profitability, a lot higher. With a Gleaner combine and adjustable corn head from Allis-Chalmers.

Gleaner is a registered Allis-Chalmers trademark 30 78



The Rising Power in Farming
ALLIS-CHALMERS

A. J. NOSS & SON, INC.
RD 2, Oley, PA
215-987-6257

GRUMELLI FARM SERVICE
Quarryville, PA
717-786-7318

L. H. BRUBAKER, INC.
Lancaster, PA
717-397-5179

PETERMAN FARM EQUIPMENT, INC.
225 York Road
Carlisle, PA
717-249-5338

C. J. WONSIDLER BROS.
Rt. 309 & 100
R2 New Tripoli, PA 18066
215-767-7611

SHARTLESVILLE FARM EQUIPMENT
Shartlesville, PA
215-488-1025
H. Daniel Wenger, Prop.

BHM FARM EQUIPMENT, INC.
Annville, RD1, PA
717-867-2211

ROY H. BUCH, INC.
Ephrata, RD 2
717-859-2441

AG-INDUSTRIAL EQUIPMENT
R2, Rising Sun, MD
301-658-5568

C. J. WONSIDLER BROS.
RD 1, Quakertown, PA 18951
215-536-1935
215-536-7523

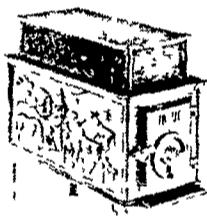
WERTZ GARAGE
Lineboro, MD
301-374-2672

AIRVILLE FARM SERVICE
Hwy. 74
Airville, PA
717-862-3358

Due to impressive fuel economy, Jotul is an investment that can pay for itself over the first winter.

ANOTHER ULTIMATE FROM Jotul

Jotul No. 118 is a big, dependable woodburning stove with high heating capacity and a really attractive appearance. Can be fired with 24" logs



- Many Models to Choose From
- Exceptionally Long Burning Time
- Practical and efficient
- Lasts a lifetime
- Simple draft and temp control

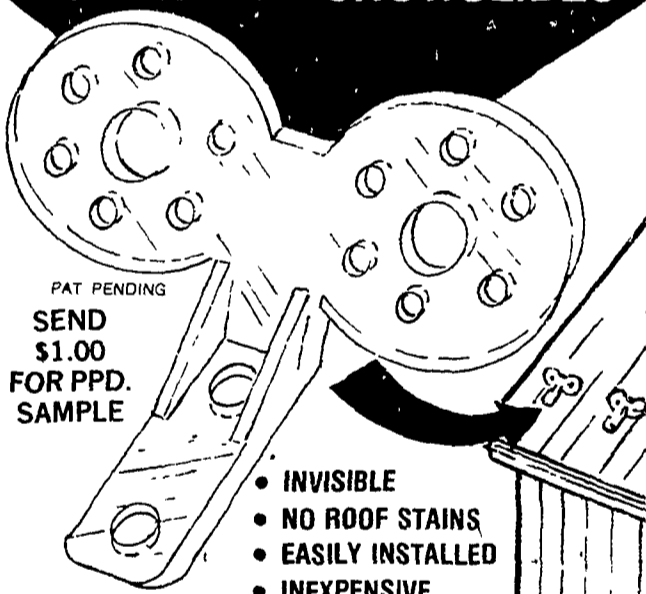
Showroom at



STILLWATER POND

Follow Signs off Rt. 501 Between Brickerville and Schaefferstown
Wed., Thurs., Fri 10-9; Sat 10-5
Ph 717-949-3002

SNOJAX
CLEARLY, THE BEST WAY TO PREVENT SNOWSLIDES



PAT. PENDING
SEND \$1.00 FOR PPD. SAMPLE

- INVISIBLE
- NO ROOF STAINS
- EASILY INSTALLED
- INEXPENSIVE

SNOJAX
BOX 3098 SHIREMANSTOWN, PA 17011
Phone (717) 761-1863

Sealcrete can paint your farm buildings quickly and inexpensively...

Call for Free estimate

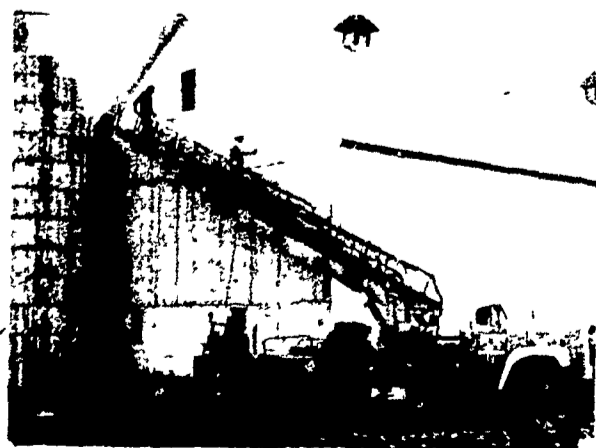


Contact

Amos Gehman, Salesman

Seal Crete, Inc.

RD #2, Ephrata, PA
Phone 717-859-1127



HYDRAULIC AERIAL EQUIPMENT