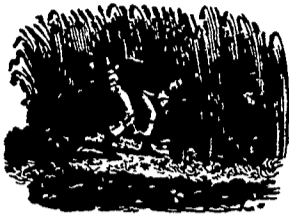


THE OLD FARMER'S ALMANAC

SEPT. 11-17, 1978

Glass falls low, in for a blow.

Pickle your cukes now Columbus finally returned to Spain Sept 12, 1504 Full moon Sept 16 Average length of days for the week, 12 hours, 31 minutes Cider is made, fish are spawning, and trees are starting to blush now Promise little and do much



Ask the Old Farmer: I can remember my grandmother making nanny plum tea Do you know what it is? K B, Wilmington, Del
The nanny plum is also known as the sheepberry It is black and grows on a shrub or small tree We believe that it may have various local names

Home Hints To proofing the day when buttons drop off seal the thread with a dab of colorless nail polish

OLD FARMER'S WEATHER FORECASTS

New England: Rain coast, partly sunny inland to start, then northeaster with heavy rain, weekend clear and warm
Greater New York-New Jersey: Sunny and warmer, then showers and cooler at midweek, partly sunny for weekend
Middle Atlantic Coastal: Warming with showers through midweek, then sunny, seasonal
Piedmont & Southeast Coastal: Hot with moderate showers, heavy rain and cool expected for weekend
Florida: Showers and hot, weekend partly sunny with more showers
Upstate N.Y.-Toronto & Montreal: Sunny to midweek, then rain and cooler, clearing
Greater Ohio Valley: Partly sunny and seasonal through midweek, then moderate rain and cooler
Deep South: Sunny and warm days, cool nights, end of week mild temperatures and rain
Chicago & Southern Great Lakes: Partial clearing and warmer, then rainy and cool at midweek, weekend sunny, hot
Northern Great Plains-Great Lakes: Few showers locally heavy east, sunny and hot last part of week
Central Great Plains: Sunny and seasonal to start, then cooling with some rain, week's end-sunny and hot
Texas-Oklahoma: Rainy and mild, end of week sunny, hot north
Rocky Mountain: Showers south and east first part of week, then mostly hot and clear
Southwest Desert: Partly cloudy with showers east, weekend mostly sunny and hot
Pacific Northwest: Sunny and hot to midweek, then partly cloudy and seasonal
California: Sunny south and east, cloudy northwest all week

(All Rights Reserved Yankee Inc Dublin NH 03444)

Philadelphia Fresh Fruit & Vegetable Report

Wed., September 6, 1978

FRUIT

APPLIES: Supplies light. SC ctn tray pack Red Delicious USP cy 80-113s 14.00-14.50 125s 11.00 ctn film bag 12-3 lb. USF cy 2 1/4" & Up Red Delicious 8.40-9.00.
BLUEBERRIES: Supplies insufficient to quote.
GRAPES-TABLE: Steady. NJ 1/2 bu. tmpr Open Face Concord 6.50-7.00.
PEACHES: About Steady. 38 lb. ctn no grade mark Up Sizes unless otherwise stated. NH Redskin 2" 8.00-2-1/8" 9.00-10.00 2 1/4" 10.00-11.00, Loring 2 1/2" 11.00-11.50 USE#1 13.00, Jersey Queen

2" 8.50 2 1/4" one lot 13.00 2 1/2" 11.50-12.00 3" 12.00, Mar-Queen 2 1/4" 12.00, Stayman Beauty 2" Ripe 6.00-7.00 2-1/8" 10.00. Ripe low as 5.00, Commercial 4-4.50, few 3.00.
PEARS: Steady. Bartletts. Wash 36 lb. ctn 100-135 sz 13.00, Calif. 4/5 bu. ctn US#1 120s 15.50.
PLUMS-PRUNES: Higher. PA 1/2 bu. ctn no grade or variety mark 4-4.50.
MELONS
CANTALOUPE: About steady. Calif. 1/2 ctn 6s 5.00 12s 6.00-7.00 mostly 6-6.50 few 7.25-7.50 15s 7.00-8.00 mostly 7-7.50 few 8.50 18s 8.00-9.00.
HONEYDEWS: Steady. Calif. 3/4 ctn 4s 4-4.25 5s 4.50-4.75 mostly 4.75 6s 4.75-5.00.
MISCELLANEOUS MELONS: Calif. 3/4 ctn Cran-shaws 4s & 6s 6.50-7.00.

WATERMELONS: About steady. Per lb. unless otherwise stated. Md Crimson Sweet 25 lb avg. 3 1/2-4 cents. Jubilees 30 lb avg 5c 46 lb avg 5 c. Long Gray 18 lb avg 4 1/2-5 c.

VEGETABLES

BEANS-LIMA: NJ 1/2 bu hmpr 4.50-5.00.
BEANS: Higher. NJ bu hmpr & bu crt Round Green Type 5.00-7.00 fair qual 4.00-5.00. Bountiful Type bu ctn 3-3.50.
CABBAGE: Steady. 1-3/4 bu crt & ctn med-lge Green unless otherwise stated. NJ 4-4.50 some 3.50. PA 4-4.50 some 3.50.

CELERY: About steady. Crates & Carton. Ohio 2-4 doz 11.00-12.00. NY 2 doz 10.50-11.50 2 1/2 doz 11.00-11.50 few 10.50 3 doz 10.50-11.50 few 10.00 4 doz 10.00.

CORN-SWEET: Slightly higher. Wirebound crt 4 1/2 dozen Minimum Pre-cooled Yellow unless otherwise stated, PA 3.00-4.00 not Pre-cooled 2.50 White 3-3.50. NY 4.00. NJ 3-3.50 Not Pre-cooled 2.50 White 3-3.50.

CUCUMBERS: Higher. 1-1/9 bu crt & ctn waxed med unless otherwise stated. NJ 5.00-6.00 fair qual 3.50-4.00 lge 3.00. NY lge 3.50 sml 5.00. NC 5.50-6.50 few 5.00 fair qual 4.00-5.00 lge 2.50-3.00.

EGGPLANTS: About steady. NJ 1-1/9 bu crt & ctn 6.00-7.00 some 5.50 fair qual 3.00-4.00.

ENDIVE: Steady. 1-1/9 bu crt & ctn Precooled unless otherwise stated. NJ 6.00 Not Precooled 3.50.

CREENS: Wirebound crt approx. 1-1/2 bushel unless otherwise stated. PA bhcd Collard 3.75-4.00 Turnip Tops 3.75. VA loose including bu bkt Mustard Turnip Tops Kale & Rape 4.50.

LEEEKS: 4/5 bu crt bhcd 12s unless otherwise stated. NJ 5.00. PA fair qual 4.00. Calif. ctn bhcd 12s 6.50.

LETTUCE: Iceberg about steady. Ctn 24s. Calif. 5.75-6.00 mostly 6.00 some 5.25-5.50 film wrpd Standard ctn 6.00 lge ctn 7.00. NY 3.75-4.00.

ROMAINE: About steady. NY ctn 24s 4.50 crt 16s 3.50.

MUSHROOMS: About steady. PA 4-qt bkt med-lge 4-4.50 best 4.75-5.00 sml-med 3.50-3.75 best 4.00.

ONIONS-DRY: Steady. 50-lb sks US#1 or Generally Good Quality Yellow unless

otherwise stated. NY med 2.50-3.50 mostly 3-3.50 few 4.00 25 lb sks Red med 5.00-6.00 lge 7.00-8.00. NJ Globe Type med 3.00.

ONIONS-GREEN: About steady. NH 4/5 bu crt bhcd 36s 5.00-6.00 fair qual 4.00.

PARSLEY: About steady. Bunched Curly. NH bu crt 5 doz 10.00.

PEPPERS: About steady. 1-1/9 bu crt & ctn California Wonder Type Green unless otherwise stated.

NJ lge 6-6.50 med-lge 5.50-6.00 Mixed Red 4.00-5.00 mostly 4-4.50 fair qual 3-3.50 All Red lge 5.00-6.00 Cuban Type lge 5.00 few 6.50-7.00 Long Hots 5.00 1/2 bu ctn 2.00-3.00.

POTATOES: Steady. 50 lb sks US#1 Size A wshd unless otherwise stated. Round Whites. PA unwshd 2.50. NJ including some unwshd 2-2.75 mostly 2.25 lge 3.25-3.50. DEL 2-2.35 lge 3.25 Baled 5-10 lb film bags 3.50 10-5 lb film

bags 4.50. Round Reds. NY 4.00 few higher.

RADISHES: About steady. Ctn Film Bag 30-6 oz Red unless otherwise stated. NY & OHIO 1.50-1.75. OHIO 2.50 16-qt bkt bhcd Red 24s 6.00.

SPINACH: OHIO 24-qt bkt Savoy Type 5.00.

SQUASH: Higher. NH 1/2 bu ctn Zucchini sml 10.00 med 6.00 Yellow Straight-neck sml 10.00 fair cond 3.00 med 6.00 White med 3.00-4.00.

SWEET POTATOES: About steady. 50 lb ctn Porto Rico Type unless otherwise stated. MD US#1 7.50-8.00 med 5.00 lge 4.50-5.00. NC US#1 8.50-9.00 one lot 7-7.50. NJ no grade mark 1/2 bu hmpr Open Face Red & Yellow Jersey 3.00-4.00.

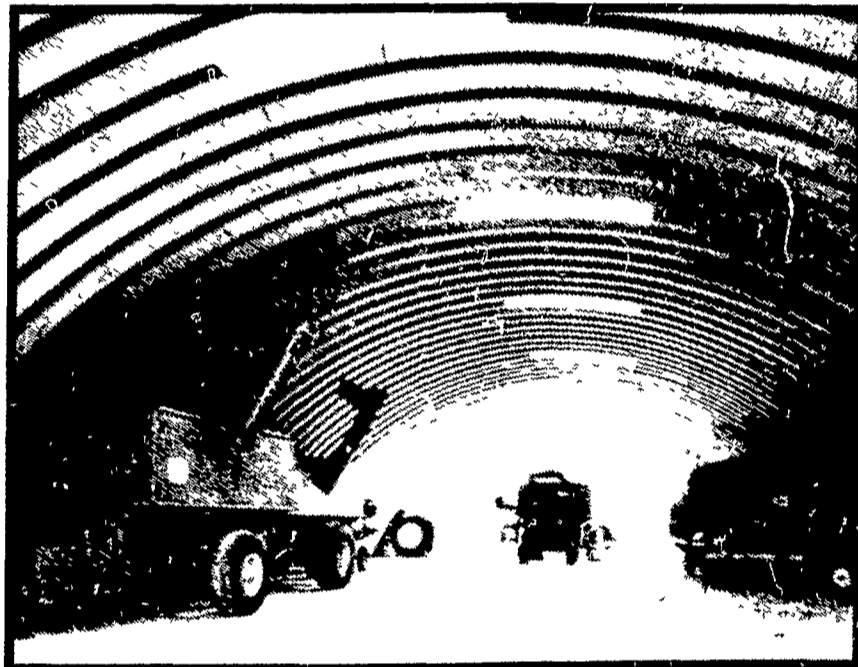
TOMATOES: Steady. 30 lb ctn Light Red unless otherwise stated. PA lge 6.00 Red 4.50. NJ 4.00-5.00 mostly 4.50 Red 3-3.50 med 2.50-3.00 few 4.00.

Valley Livestock

Valley Stockyards Athens, Pa.

Monday, September 4
Reported receipts of 466 calves, 119 cows, 114 hogs, 27 heifers, 24 sheep, 20 lambs, 18 bulls, and 14 steers. Cattle market reported steady.
Veals 55.00-75.00; bobs, 90-110 lbs. 58.00-70.00; bobs, 80 lbs. and down 50.00-55.00; grassers and feeders 35.00-51.50; lambs 52.50-60.00; sheep 15.00-28.00; hogs, 200-250 lbs. 44.00-48.50; sows 36.00-40.00; boars 34.00-38.00; pigs 25.00-37.00; feeder heifers 38.00-42.50; steers, good 46.00-54.50; steers, common 46.00-50.00; bulls 44.00-50.00; cows, good 38.00-41.00; cows, medium 35.00-37.50; cows, poor or small 30.00-33.00; horses 200.00-250.00; ponies 15.00-50.00; goats 15.00-40.00.

CALL OR WRITE FOR PRICES & INFORMATION BEFORE FACTORY PRICE INCREASE.



MIRACLE SPAN STEEL BUILDINGS

RD1 Box 5, Christiana, PA 17509
(Lancaster County)
Ph: 215-593-5326

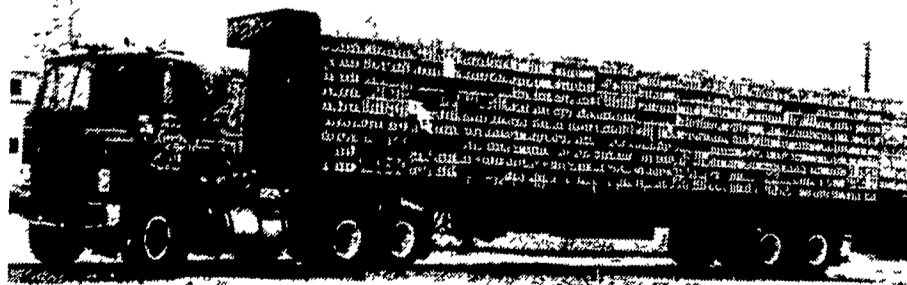


WANTED 200,000/wk.

Leghorn Hens - Heavy Hens

DIRECT Plant Prices - Leghorn Hens Prevailing

TOP PRICES PAID



WE BUY, LOAD & HAUL - No Lots Too Small Or Too Large.

Call or Write:

IRWIN M. SECHLER & SONS POULTRY

Box 55, Strausstown, PA 19559
Phone 215-488-1188

DOES YOUR FARM EQUIPMENT HAVE DIESEL PROBLEMS?????

Contact us

MILLER DIESEL INC.

Specializing in Diesel fuel injection pumps, injectors and turbochargers.

6030 Jonestown Rd.
Harrisburg, Pa. 17112

717-545-5931
Interstate 81 Exit 26

In addition to our repair service, we offer a fast exchange system for fuel injection pumps, injectors and governors. Let us solve your diesel problems. You can depend on us for fast efficient service.

We welcome all farm equipment dealers business.