

## Project Clearwater

(Continued from Page 101)  
Everyone involved in the project worked enthusiastically. They liked the

idea of reducing the estimated 350 tons of topsoil lost per acre per year by about 80 per cent.

The August sun was shining warmly and generously as the workers methodically went about their work in highly orchestrated fashion. The farm, located at the foot of

South Mountain, was a beehive of activity

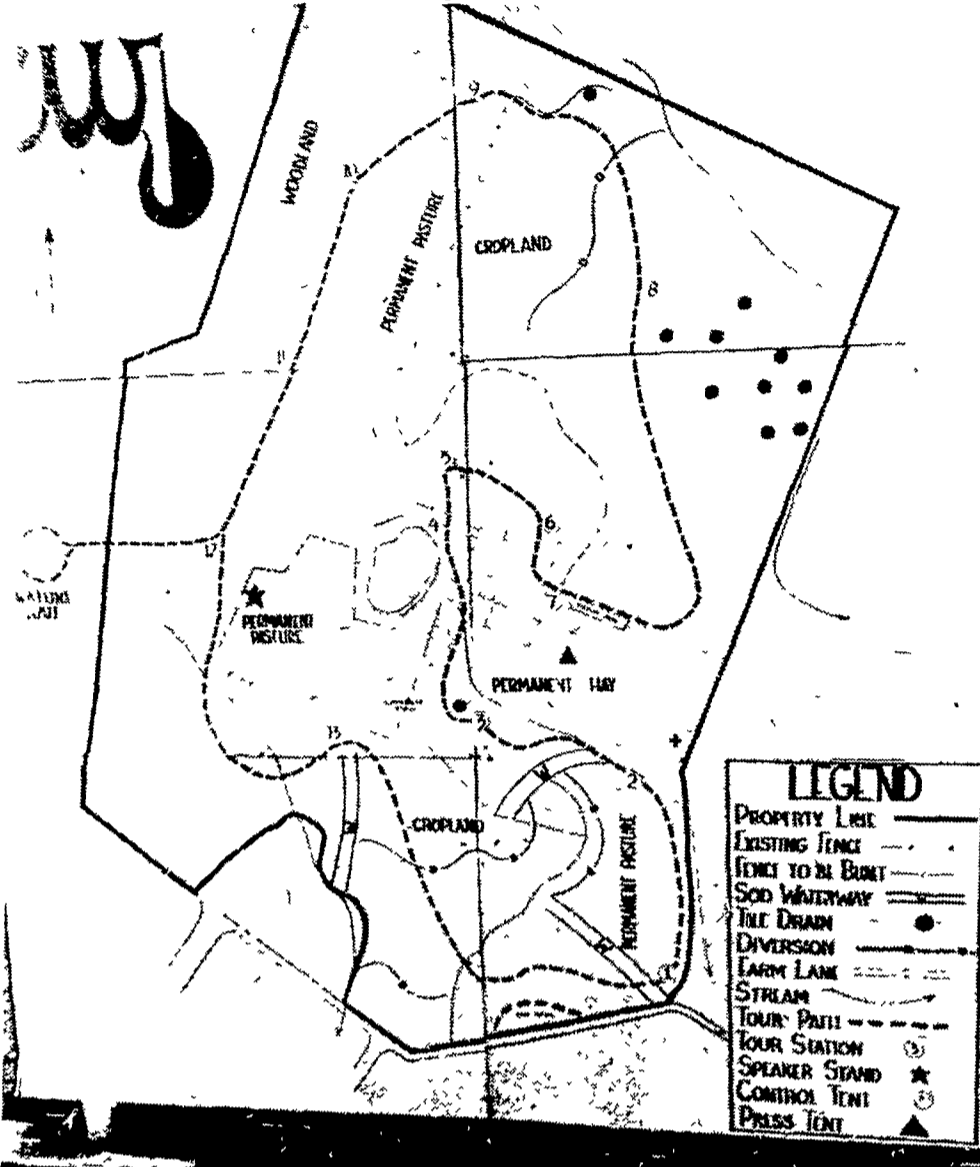
Paul Edwards, district conservationist for the Soil Conservation Service in Frederick County, summed the activities up in the following words

"In essence we have planned to handle the raindrops from the time they strike the surface of this farm until they leave by the flowing stream."

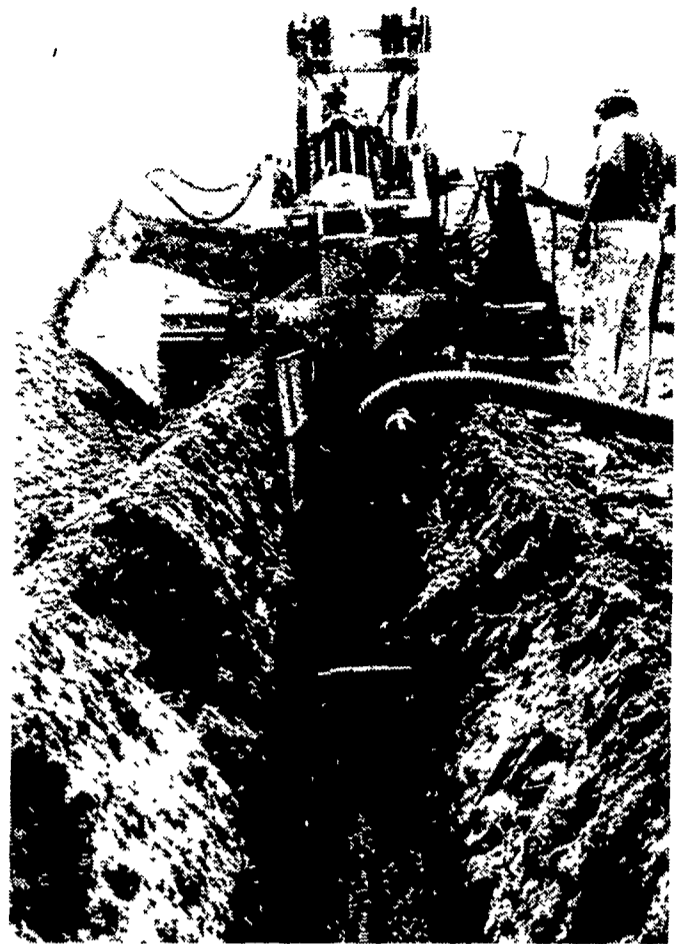
To "manage every raindrop" required the development of lush plant growth, contouring slopes, and channeling water by way of diversion ditches, terraces, and underground tile.

"The conservation practices installed on the Roelkey farm will keep the soil and minerals on the fields to support food and fibre for this and the next generation," said Edwards. "What have the raindrops done?" he asked, then answering his own question. "Those that were not absorbed into the soil have reached the stream with a minimum amount of soil and mineral pollutants clinging to them."

The event witnesses here last month by thousands was, according to the District, "a lesson taught by a community, to be learned by a nation, and remembered by all for generations to come."



The project Clearwater map details a few of the projects that were involved in the massive undertaking.



More than 3200 feet of drainage tile were installed at the Warren Roelkey Farm.

# SNOJAX

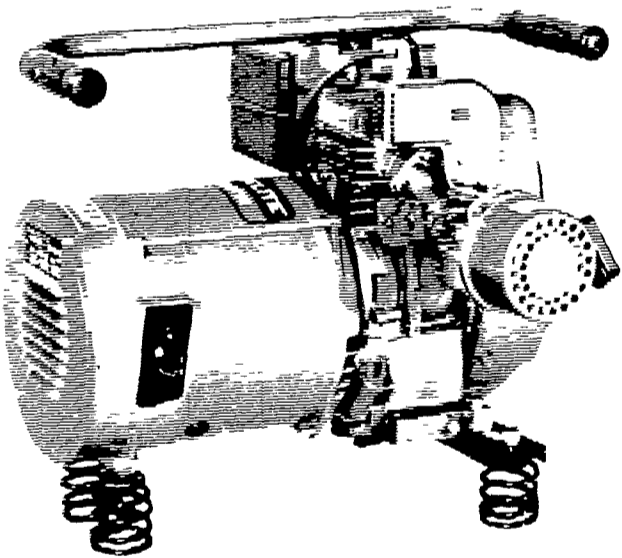
**CLEARLY, THE BEST WAY TO PREVENT SNOWSLIDES**

PAT PENDING  
SEND \$1.00 FOR PPD. SAMPLE

- INVISIBLE
- NO ROOF STAINS
- EASILY INSTALLED
- INEXPENSIVE

**SNOJAX**  
BOX 3098 SHIREMANSTOWN, PA 17011  
Phone (717) 761-1863

## Homelite® Emergency Power...for your Farm.



### Light in Weight...Yet Big in Performance.

Farmers and ranchers can run power tools, lights and appliances with these dependable power plants

- Choose from four rugged models 1500 to 4000 watts
- Develops single phase A.C. power 60 Hz 120 volts
- 4-cycle single cylinder engine has compression release and mechanical governor
- Automatic rewind starter
- 20 amp A.C. receptacles provided
- Weight — from 60 to 118 lbs.

• SALES • RENTALS • SERVICE

LANCASTER

## AceRents

720 N. PRINCE ST., LANCASTER, PA  
PHONE: 717-393-1701

LEBANON

## RUNLIMITED

940 CORNWALL RD., LEBANON PA  
PHONE 717-272-4658

We Rent Most Everything

## Better 'N Ben's THE FIREPLACE STOVE...



SAVE UP TO 60% IN HOME HEATING COST

- New Model 501 "BIG BEN" Features Sealed Glass Door Panel, Pre-heated Secondary & Primary Air, Full Baffle, Sliding Damper and Smoke Dump System

**HOWARD D. WEISS**

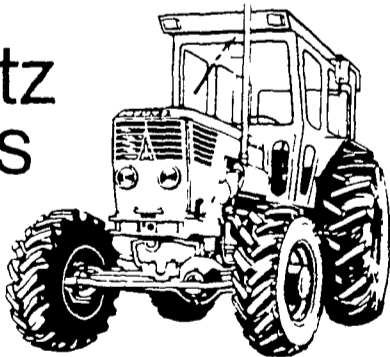
R D 2 Myerstown

717-949-3755

Models in Stock - No Shipping Charge<sup>1</sup>

Free Standing Models Available

Deutz gives you



# power

## ON ALL FOUR WHEELS

Four-wheel drive is your work with fields where two wheel tractors can't go! Extra traction — up to 49% more driving wheel contact. Less rear wheel slippage. Extra flotation. The Deutz air-cooled diesel engine is famous for fuel savings. Full wheel drive gives you even greater savings. Ask for a field demonstration and see why you should switch to one.



## STAUFFER DIESEL, INC.

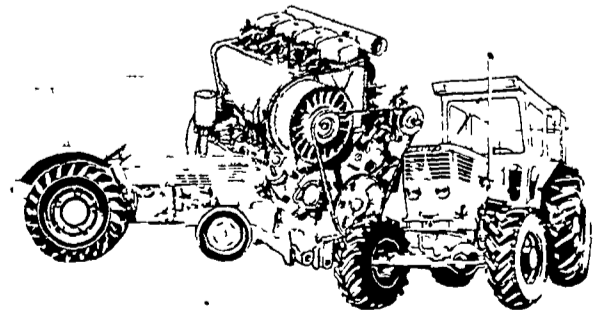
312 W MAIN STREET

NEW HOLLAND, PA

PH 717-354-4181

DEUTZ The most carefully engineered tractor in the world

ASK US ABOUT THE  
**DEUTZ**  
2-YEAR OR 2000-HOUR  
ENGINE WARRANTY



All Deutz air-cooled diesel tractors purchased after January 1, 1977 carry this outstanding parts and labor warranty on the engine and cooling system except the injector and electrical systems. Come in and check the complete written warranty.

