

Livestock market and auction news

Oklahoma Cattle

August 31, 1978

Thursday feeder cattle auction estimated receipts 10,300; Same day last week 8,327.

Fairly active, feeder cattle and calves steady, instances 50 cents to 1.00 higher; majority receipts Choice 350-850 lbs. feeder steers and 350-650 lbs. feeder heifers, moderate attendance of buyers.

FEEDER STEERS: Choice 300-400 lbs. 73.00-78.00, two small lots 292-328 lbs. 82.10-83.50; 400-500 lbs. 67.25-74.00; 500-600 lbs. 64.50-69.75; 600-700 lbs. 59.75-65.00, near one load and part load 605-657 lbs. 66.30-66.50; 700-800 lbs. 58.50-62.50; 800-900 lbs. 57.00-59.50; two part load 930-997 lbs. 54.00-55.20; Mixed Good and Choice 300-500 lbs. 62.00-68.25; 500-600 lbs. 58.00-63.50; 600-700 lbs. 57.25-59.75; 700-830 lbs. 55.25-57.75; Good 500-700 lbs. 55.25-57.75; Good 500-700 lbs. 54.00-58.00; 700-800 lbs. 54.25-57.00; part load 862 lbs. at 53.25; few Good 500-850 lbs. Holstein steers 49.00-53.00.

FEEDER HEIFERS: Choice 300-400 lbs. 60.00-65.50; 400-500 lbs. 57.25-63.50; few 64.60-65.20; 500-600 lbs. 55.50-59.25; 600-700 lbs. 56.00-58.50; mixed Good and Choice 300-500 lbs. 55.50-57.00; 500-700 lbs. 54.00-55.75; Good 400-700 lbs. 49.75-54.50.

FOR THE WEEK:

Compared to late last week, Feeder Cattle and Calves steady to firm, instances 50 cents to \$1.00 higher; Slaughter Cows closed uneven, beef cows near steady, anner and cutter steady to 1.00 higher, late sales utility and commercial 2-3 34.25-38.25, cutter 1-3 32.25-36.00; Bulls closed steady, instances 1.00 higher, weeks sales consisted of YG 1-2 1000-1600 lbs. 42.50-48.00; salable receipts near 23,100 head, compared to 23,677 head last week and 22,779 head the same week a year ago. Cows and bulls near 13 per cent of cattle receipts, feeders near 10 per cent of the total.

Market courtesy of USDA.

Pa. Auction Summary

September 1, 1978

CATTLE 7319. Compared to 5900 last week and 8093 a year ago. Compared with last Friday's market, slaughter steers grading Choice thru Prime 50 cents to \$1.00 higher, Standard and Good 50 cents lower. Sl. Cows uneven, spots \$1.00 higher to \$2.00 lower. Sl. bullocks steady to strong on a small supply. Sl. bulls steady to \$1.00 higher. High Choice & Prime YG 3-4 sl. steers 54.00-55.60; Choice YG 2-4 51.50-55.25, Good 48.00-51.50, Standard 43.00-48.50, Utility 40.00-43.75, Choice sl. heifers 48.00-51.75, Good 44.00-49.00, Standard 39.00-

44.00, few Utility 36.00-40.25, Utility & Commercial sl. cows 37.50-42.00; Cutters 36.00-40.50, Canners & low-Cutters 33.00-37.50, Shells down to 26.75; few Choice sl. bullocks 50.00-53.00, few Good 47.00-50.50, few Standard 44.00-48.00. Yield Grade No. 1 1000-2300 lbs. sl. bulls 46.50-50.00, few to 53.00; Yield Grade No. 2 900-1650 lbs. 43.00-48.00.

FEEDER CATTLE: Choice 300-750 lbs. steers 50.00-69.00, med. Good 300-700 lbs. 45.00-54.00, Good & Choice 300-650 lbs. heifers 46.00-55.50, Good & Choice 400-750 lbs. bulls 43.00-55.00.

CALVES 4551. Compared to 4030, 5387 a year ago. Vealers highly uneven, spots \$4.00 higher to \$2.00 lower. Prime vealers 84.00-90.00, Choice 69.00-83.00, Good 60.00-74.00, Standard & Good 90-110 lbs. 55.00-68.00, Standard 70-90 lbs. 49.00-58.00, Utility 55-110 lbs. 30.00-50.00.

FARM CALVES: Active. Holstein bulls 90-120 lbs. 57.00-85.00, few to 94.00; Holstein heifers 85-130 lbs. 65.00-113.00, few down to 58.00.

HOGS 6470. Compared to 5751 last week and 6880 a year ago. Barrows and gilts mostly steady to 50 cents lower. US No. 1-2 200-240 lbs. barrows and gilts 50.50-51.75, few to 52.75; No. 1-3 200-250 lbs. 49.00-51.00; No. 2-3 190-260 lbs. 48.00-49.50; No. 1-3 140-190 lbs. 44.00-47.50. Sows. Steady to \$1.00 higher. US

No. 1-3 300-575 lbs. sows 38.50-44.00. No. 2-3 300-650 lbs. 36.00-40.00. Boars 29.00-38.00.

FEEDER PIGS 1244. Compared to 1117 last week and 1918 a year ago. \$2.00 - 4.00 lower. US No. 1-3 20-35 lbs. feeder pigs 20.00-38.00 per head, No. 1-3 35-50 lbs. 30.00-48.00, few No. 1-3 50-85 lbs. 44.00-54.00.

GRADED FEEDER PIGS 5586. Compared to 1530 and 3703 a year ago. Highly uneven, spots \$20.00 higher to \$17.00 lower. 1-2 20-40 lbs.

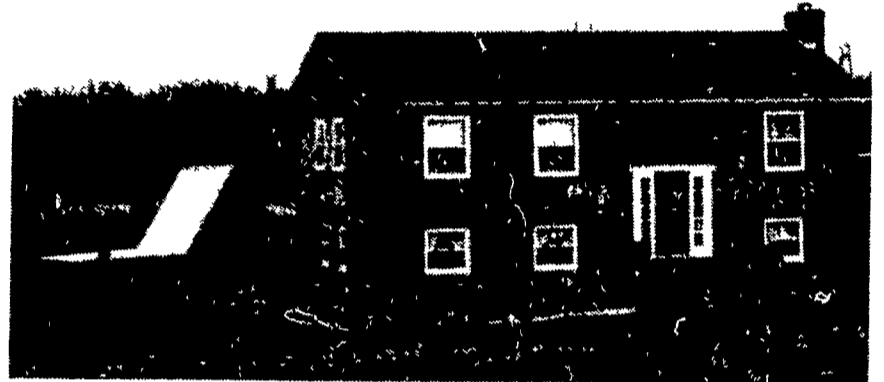
100.00-125.00; 40-60 lbs. 82.50-107.00, few to 121.00; 60-75 lbs. 72.00-98.00. 2-3 20-40 lbs. 84.00-122.00; 40-60 lbs. 82.50-115.00; 60-75 lbs. 72.00-96.00. Utility 20-50 lbs. 69.00-108.00, few to 115.00.

SHEEP 718. Compared to 770 last week and 805 a year ago. Spring or Woolled sl. lambs uneven, mostly steady to \$3.00 lower. Choice 60-115 lbs. 51.00-61.50, few to 66.00; Good 50-100 lbs. 49.00-55.00. Slaughter ewes 14.00-19.00.

Market courtesy of PDA.



Solar Heat Is Here To Stay!

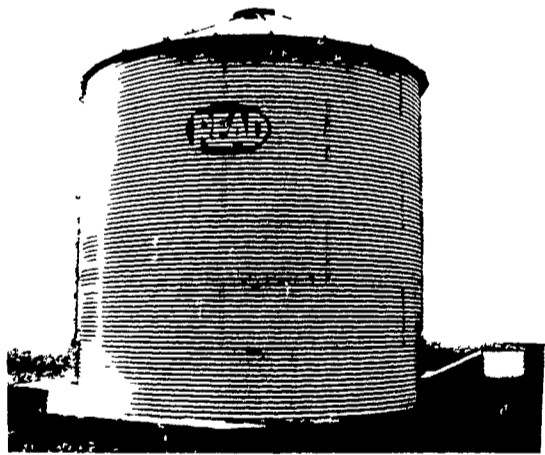


Solar Heating will fit into your home ...
Call us to find out and to see it in operation.

SOLAR HEATING SERVICES

505 E. WOODS DRIVE LITITZ, PA. 17543
PHONE: 717-626-9541 — 717-733-8806

ONE BIN OR AN ENTIRE SYSTEM...



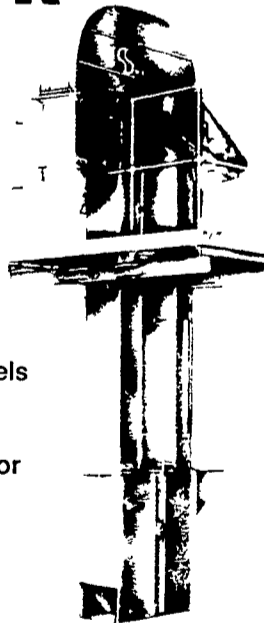
READ Reliability.

18', 21', 24', 27' & 30'
BINS AVAILABLE FOR IMMEDIATE DELIVERY AND ERECTION. LARGER SIZES STILL AVAILABLE FOR THIS FALL.

SILVER-SWEET

GALVANIZED ELEVATOR LEGS

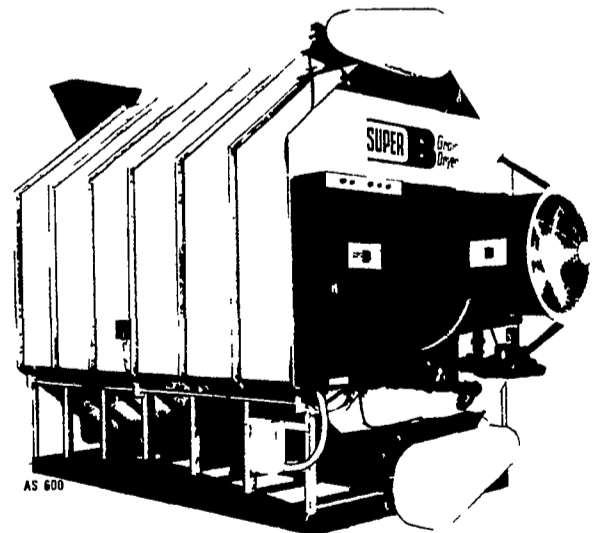
- Water-tight, weather-proof, rust resistant, self supporting
- 18 standard models, normally in stock for prompt delivery
- Capacities 800 to 30,000 bushels per hour
- Fast, easy installation. Long dependable operation. Write for free 24-page catalog.



SWEET

...THE TRUSTED NAME IN GRAIN HANDLING

SUPER B[®] Grain Dryers



Only SUPER-B has the "STAGE CONTROLLED SWEAT DRYING" PROCESS ...

WE'RE THE GRAIN SYSTEMS PROFESSIONALS

CALL US FOR:

QUALITY PRODUCTS

DEPENDABLE SERVICE

COMPETITIVE PRICES

KIMMICH FARM EQUIPMENT

NEFFSVILLE, PA 17601

717-684-3829