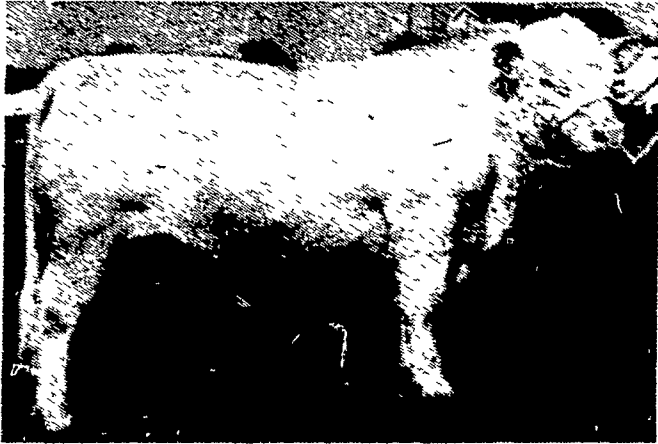


Swine fever

(Continued from Page 1)
infected pork scraps are fed to swine, an outbreak of ASF is a near certainty.

An Agriculture Department spokesman said that state regulations require any one feeding garbage to be licensed, and to cook the



Pat and Howard Smith, Greenfields Farm of Landenberg will be consigning three-fourths interest and full possession in "Duke" A661, a bull they purchased from Jerry Litton.

Charolais sale dedicated to Litton

MERCER — Jerry Litton a former Missouri congressman and dynamic agricultural leader who lost his life along with his wife and two children in a plane crash two years ago, will be remembered here on Sept. 9 when a group of Charolais breeders dedicate a sale of LCR bloodline cattle to their past effort. Jerry and his father Charlie established the Litton Charolais Ranch, LCR, line of Charolais on performance and carcass traits based on a bull called "Sam" (FWT Bar 951). Their cattle were at the top in performance over all breeds in independent and college research units and through PRI (Performance Registry International) - the all-breeds performance evaluation program.

and "661" along with some heifers and cows that are being presented by Silver Wings.

At a program on Friday evening, Sept. 8, prior to the sale, Dan Schoenfelder, part owner and business manager of the present Litton Ranch will present a slide program on how LCR became a legend in out time in the purebred beef cattle business.

Great Oaks Farm, owned by Dave and Ernie Simpson and Silver Wings Farm, owned by Carolyn and Wilson Legg of Gettysburg, and Pat and Howard Smith of Greenfields Farm, Landenberg were part of the group of 10 breeders that initiated the memorial sale to provide a living memory to the Littons. Great Oaks and Greenfields will offer partial interests in their polled LCR herdsires - "283"

garbage at a rolling boil (212 degrees F.) for thirty minutes to kill disease-causing virus and bacteria. Cooking garbage is particularly important with ASF so close to the United States.

The outbreak of the ASF in Brazil and the Dominican Republic has spread rapidly. The strain of the virus which is active is a new milder strain which some officials feel could be even more dangerous than the type which can kill 100 per cent of affected swine within a week. The disease could enter the country and spread unchecked before it kills enough swine to make itself known.

The only other infestation of ASF in the western hemisphere occurred in Cuba in 1971 and resulted in the loss of over one-third of that country's swine before it was eradicated.

Shelhamer noted the importance of cooking and surveillance to keep ASF and other diseases out of the country. The amount of traffic among the Caribbean Islands, and the United States is tremendous, according to USDA sources. "All it could take is literally one sausage infected with ASF virus to find its way into one garbage feeding farm to kickoff a lethal outbreak," he said.

The Department is urging

proper cooking of all garbage containing meat scraps and thoroughly agitating the garbage during cooking. In addition, swine producers should practice strict disease control measures. "Don't let visitors in your hog pens or on your farm," he noted. "The ASF virus

can travel on clothing, equipment, and vehicles." Inspect your animals every day for signs of disease. Suspicious conditions should be reported to a veterinarian. Symptoms to look for include: high fever, red blotches on the skin, weakness, a tendency to

huddle together, higher than usual death losses. ASF appears very similar in symptoms to hog cholera. Remind other garbage feeders to cook garbage thoroughly. ASF does not respect property lines. If one herd is infected, surrounding herds will be exposed.



POULTRY BREEDER HOUSING NEEDED IMMEDIATELY

- 5000 heavy breeders to be housed in 2 to 3 weeks.
- Contract or individually owned
- Call 215-536-3155 or mail coupon below.

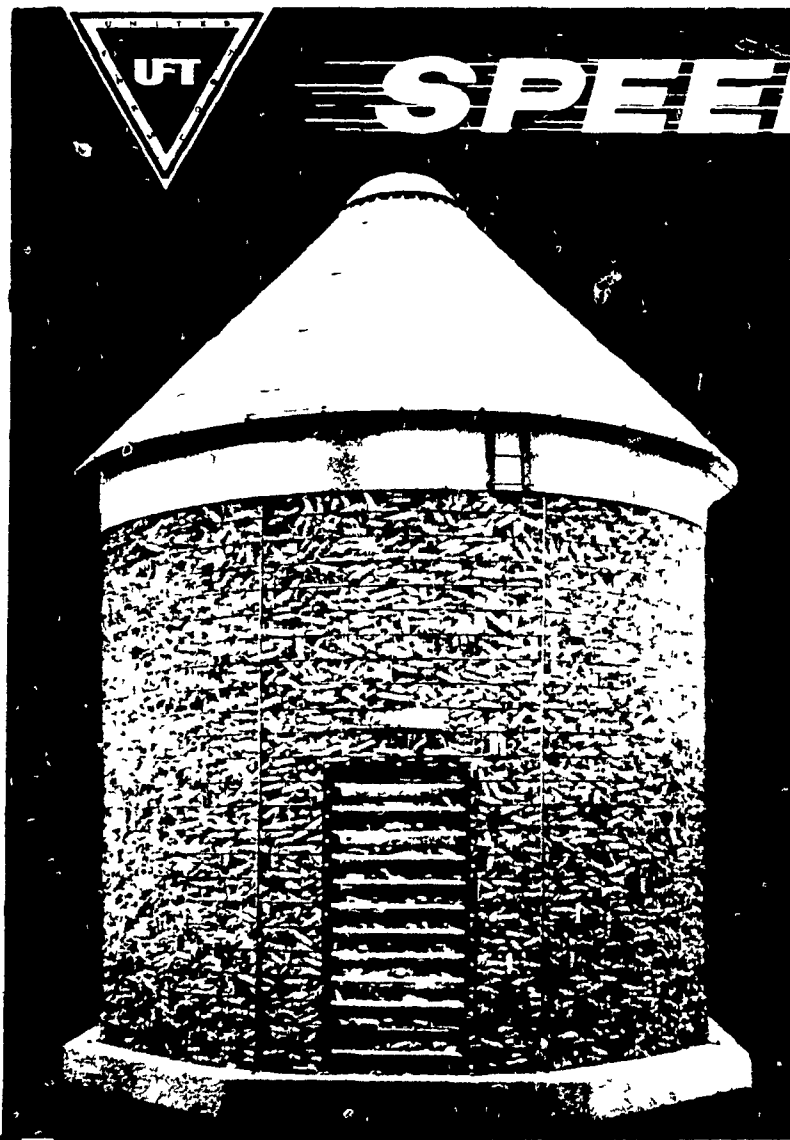
Mail to Box 366 M-39
c/o LANCASTER FARMING, Lititz, PA 17543

NAME _____

ADDRESS _____

TOWN _____ STATE _____

ZIP CODE _____ PHONE _____



BAR-LOK

CORN CRIBS!

The Advantages of Speedy Corn Crib

1. Easy to Erect

Speedy's Corn Crib goes up fast and easy because of roof rafters and Bar-Lok side panels. The steeply pitched roof pushes the corn to the edges—NO WASTED SPACE!



Step 1 — Bar-Lok Construction saves you time — gives you a strong, sturdy crib. Crib wire panels are interlaced to form an eye. A 13"x3/8" rod is then inserted through the eye and pushed down to the foundation. Easy, simple, fast construction.



Step 2 — Rafters are bolted to assembled rafter ring. Now you're ready to put the roof panels on. Rafters assure you of proper roof panel placement the first time. No wooden framework to build.

2. Wide Selection

There is a Speedy Crib for every farm need, priced right for every budget.

- Choice of 900, 1200 or 1700 Bushel Sizes.
- 5 or 2 Gauge Wire Mesh Side Panels.

3. Durable

The Speedy 5 Gauge Crib won't bulge or sag—stands straight and tall year after year. For extra strength and durability get the Speedy 2 Gauge Crib—outlasts other cribs—even with full capacity loads. Galvanized wire, not aluminum paint.

4. Save Money and Energy

Corn stored in a Speedy Crib is dried by Mother Nature without the use of costly energy. This saves money and also helps conserve our scarce energy resources.

"EARLY ORDER" SPECIAL

SPEEDY CORN CRIBS

SAVE 5% OFF OUR ALREADY SPECIAL PRICES

OFFER GOOD TILL AUGUST 31, 1978

CRIBS IN STOCK FOR IMMEDIATE DELIVERY

FARMERSVILLE EQUIPMENT

INC.

RD4, Ephrata, PA

717-354-4271

STORE HOURS: MON. THRU FRI. - 7:30 to 5:30
THURS. TILL 9:00 — SAT. TILL 3:00

DANIEL'S ENGINE CONTROL

Diesel Engine Rebuilding & Repair
Will Work On All Types of Power Units
Harvesters, hammermills, Generators-Pumps

Specializing in GM & Detroit Diesels

RD3 Ephrata, PA
Ph 717-733-3890