

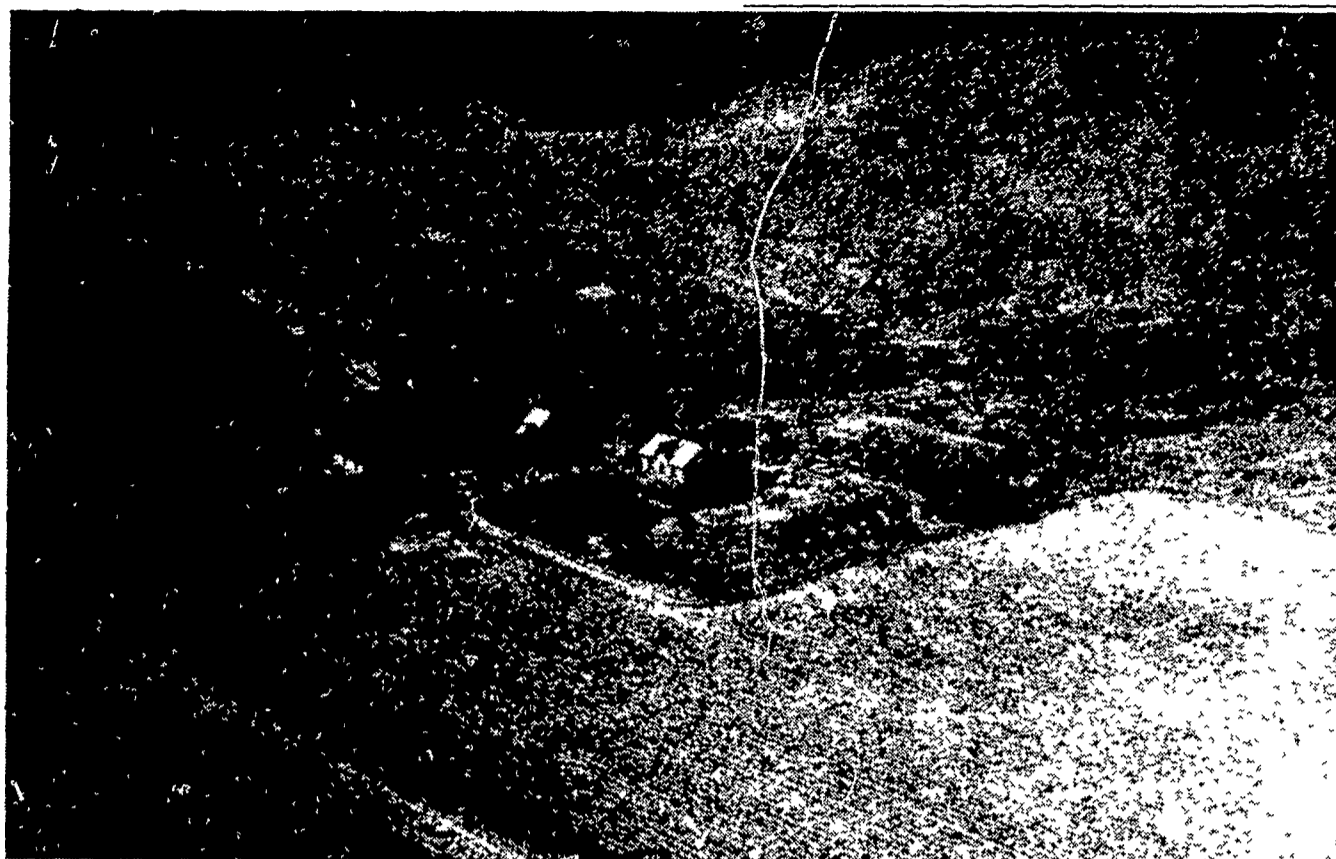
Farm renovated

(Continued from Page 1)

barn, renovating a home and landscaping the lawn. As the work went on beneath a hot August sun, thousands of visitors watched, and studied.

The site of the huge undertaking was the Warren Roelkey farm, located at the foot of South Mountain in Frederick County. The event was sponsored by the Catoctin Soil Conservation District, with assistance from the Frederick Soil Conservation District. Numerous other organizations, groups, and agribusinesses took part to assist in the work that had to be done.

(Turn to Page 31)



Before the field day, yet after considerable improvements had already been made, the Warren Roelkey farm looked like this.

FRESH COWS **EVERY WEDNESDAY IS** **SPRINGERS**

DAIRY DAY

AT NEW HOLLAND SALES STABLES, INC.
New Holland, PA

If you need 1 cow or a truck load, we have from 100 to 200 cows to sell every week at your price. Mostly fresh and close springing Holsteins.

Cows from local farmers and our regular shippers including Marvin Eshleman, Glenn Fite, Kelly Bowser, Bill Lang, Blaine Hoffer, Dale Hostetter, H.D. Matz, and Jerry Miller.

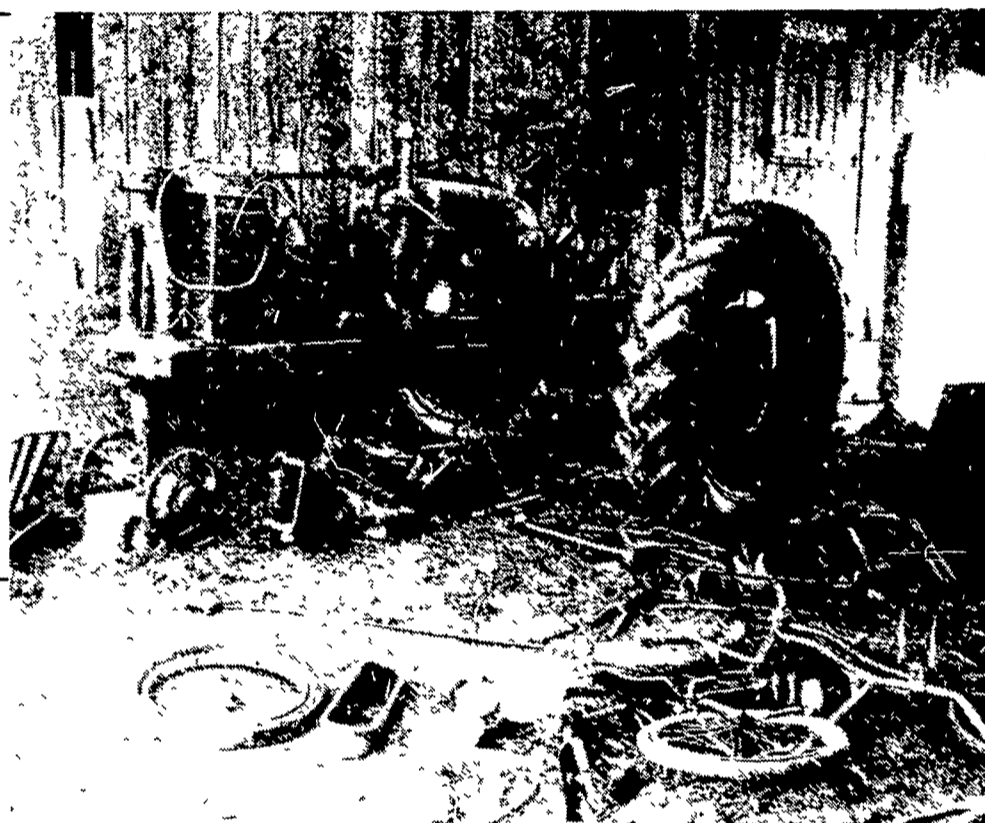
SALE STARTS 12:00 SHARP
Also Every Wednesday,
Hat, Straw & Ear Corn Sale 12:00 Noon.

All Dairy Cows & Heifers must be eligible for Pennsylvania Health Charts.

For arrangements for special sales or herd dispersals at our barn or on your farm, contact
Abram Dffenbach, Mgr
717-354-4341
OR
Norman Kolb
717-397-5538

HEIFERS **STOCK BULLS**

Typical of the condition the entire farm was in is this scene in a delapidated shed which volunteers hadn't gotten to as of mid-afternoon, Aug. 19.



SMUCKER'S ENGINE SHOP

DISTRIBUTOR FOR:
SLANZI, PERKINS & LISTER DIESELS

- Good used diesel engines SR 2 HP. Lister.
- New Sputnik wheels and Parts.

CHOOSE THE MODEL FOR YOUR NEED

ST 1-2 & 3 4 1/2-35 hp.	HR 2-3-4 & 6 17-113 hp.
6 SR 2 12 hp.	1 Petter PH2 15 hp.
1HR 2 29 hp.	1 DVA 1500 Slanzi 20 hp.
1 Petter PH1 7 1/2 hp.	2 FL 712 Duetz 11 hp.

CALL HORNING'S WAREHOUSE 717-354-4158 or IF NO ANSWER CALL 717-354-4374

SMUCKER'S ENGINE SHOP
RD 1, GORDONVILLE, PA. 17529
SALES & SERVICE
DIESEL & GAS

For lower cost per hour power, rely on

Lister
DIESEL POWER

APOLLO

VARIETY ALFALFA

BEATS "WET FOOT DISEASE."
First "proprietary" alfalfa variety with resistance to Phytophthora root rot that delivers consistently good yields.

- Resistance to Phytophthora root rot ("wet foot disease")
- Produces stands where other varieties fail
- Excellent winterhardness
- Good recovery after cutting
- More resistance to pea aphids and leafhopper yellowing than Vernal or Saranac
- Yields well even when Phytophthora not present

P. L. ROHRER & BRO., INC.
Smoketown, PA Ph: 717-299-2571

RP Seeds
Division of North American Plant Breeders

AVAILABLE IN LIMITED SUPPLIES