

Marketing sessions featured

ARLINGTON, Va. — An important part of this year's Fact Finding program are two special marketing sessions which will explore the future of the poultry and egg industry in the institutional/food service area and the future uses of computerization in marketing of product.

The first is a special pre-convention meeting. The PEIA Marketing Council will meet in special session on September 12 from 8:30 a.m. - 10:30 a.m., just prior to the official opening of this year's conference. They will hear a special presentation by Dr. Stephen Mutkoski of Cornell University on "A Look at Poultry and Eggs from the Institutional Perspective." Dr. Mutkoski will discuss the food service industry in the past, its present ramifications and speculation on the role of poultry and egg products in its future.

The second leg of the marketing program at Fact Finding occurs on Sep-

tember 14, 8:00 a.m. - 9:30 a.m., at the Albert Thomas Convention Center, when the PEIA Marketing Workshop will present "NIPFDA Presents a Look at the future of computerized marketing of poultry products." Jim Chiappe*ta of Kenosha

Poultry Company will head a panel comprised of executives in the areas of distribution, processing and retailing who will discuss the present and future role of the computer in the marketing, merchandising, inventory control, product mix and

accounting of poultry products.

This session will be open to all Fact Finding attendees.

This year's 49th Annual Fact Finding Conference and Exhibit opens Tuesday, September 12 and runs through Friday, September 15. All activities will be housed in the Albert Thomas Convention Center in the heart of downtown Houston, Texas.

Pheasants sold overseas

UNIVERSITY PARK — Agricultural exports this year may run 5 per cent or more ahead of last year's according to the USDA. Helping to set this new record are Lee and Linda Keifer of L & L Pheasantry of Hegins, Pa., who sell pheasants overseas.

Poultrymen can produce products efficiently in the U.S. where birds and people are able to increase output of acceptable quality per unit input. This allows for low cost production, processing and marketing to help people in other countries be able to afford our products.

The folks at L & L Pheasantry are leaders in this area of international trade. Lee has been marketing hatching eggs, day old chicks and breeding stock of the game bird species such as ringneck pheasant, chukar partridge, bob white quail and wild turkey to buyers overseas for several years now. Thousands of chicks were shipped to Beirut, Lebanon this Summer. Other large shipments have gone to Germany, Poland, Austria, Canada, and South America.

L & L Pheasantry participated in an American Food Exhibit in Caracas, Venezuela in cooperation with the USDA Foreign Agricultural Service in July. They also received the Outstanding Achievement in International Export award at the Second Annual Pennsylvania Trade Conference last year. L & L was one of six Pennsylvania companies selected for this award.

Foreign markets await interest in them, so it is time for people to consider selling abroad.



PUBLIC SALE

WEDNESDAY, SEPTEMBER 27, 1978
AT 2:00 O'CLOCK P.M.

VALUABLE FARM 10 MINUTES FROM
PENM SQUARE, LANCASTER, PENNA.

DIRECTIONS: The farm is located on Bean Hill Road in Lancaster Township, adjoining the Conestoga River. From Lancaster go south on South Prince St. (Pa. 72; U.S. 222). Do not cross Conestoga River. Turn right at traffic light on Route 324 for 1/2 mile; take right fork up Second Lock Road for 1/2 mile; turn right on Bean Hill Road; go 1/2 mile and turn left into farm driveway.

It consists of 108.6 acres of land, more or less, with approximately 1500' of frontage along Bean Hill Road and is located in a loop along the Conestoga River. It contains approximately 72.7 acres of tillable farmland, 13 acres of pastureland, 5 acres of woodland, 2 acres of homesites and 15.9 acres of brush and wasteland. Soil is loam type and highly productive.

The improvements consist of the following:

- (1) Main Dwelling: Two story stucco on stone building with a slate and asphalt shingle roof built about 1860, containing a full basement with oil fired hot water furnace, 8 rooms, 1 bath and approximately 2520 sq. ft. of living area.
- (2) Tenant House: Two story frame, aluminum siding dwelling with slate roof, full basement, oil forced air heat, built in 1940. It contains 6 rooms, 2 baths, 1675 sq. ft. of living area and has a 1 car garage 11' x 19' attached by a breezeway.
- (3) Spring House: A stone building with slate roof, 15' x 25' + 6' x 11'.
- (4) Bank Barn: Frame 2 story building with slate roof equipped for a swine operation.
- (5) Tobacco Barn: Frame building 88' x 32' with an attachment 52' x 28', both with slate roof.
- (6) Poultry House: A frame building 30' x 60' with an asphalt roof.
- (7) Frame Implement Shed: Two story building with slate roof 20' x 36'.
- (8) Granary: Frame building 24' x 32' with an attachment 25' x 28', all with a slate roof.
- (9) Summer Kitchen: 12' x 26' with a slate roof.
- (10) Frame Building: 18' x 26' with a wood shingle roof.
- (11) Storage Shed: Frame building 36' x 28' with asphalt shingle roof.
- (12) Corn Crib: Frame building 48' x 26' with a metal roof and wire sides.
- (13) Glazed Tile Silo: 12' in diameter x 40' high.

The sale will be held on the premises beginning promptly at 2:00 p.m. when terms and conditions will be made known by Jane R. Heller and National Central Bank, Executors of the Estate of F. Lyman Windolph, deceased.

OPEN FOR INSPECTION on Saturday, September 2, 1978 and Thursday, September 14, 1978 between 2:00 p.m. and 4:00 p.m. At other times call Barry Sellers at Lancaster, Penna. 717-291-3635.

R. Louis Weiler, Auctioneer
Vincent Wendler, Clerk & Conductor
H. Clay Burkholder, Attorney
Windolph, Burkholder & Stainton, Attorneys

YOUNG'S ANNUAL ANTIQUE AND COLLECTOR'S AUCTION

SATURDAY, SEPTEMBER 2

At 9:00 A.M.

Located at the Belleville Livestock Market Building, Belleville, Pa.

GLASSWARE, LAMPS, DOLLS

A lot of glassware items, etc., including pattern glass, stemware, Gaudy Welsh, Flo blue, Ironstone, Peanut Jar, 5 pc. bowl and pitcher set and odd pitchers and bowls, picture view-masters, cut glass, pressed glass, Carnival, pink Heisey, Majolica, Copper Lustre, stone water pitchers, beer steins, mustache cups, shaving mugs, cruets, Bisque doll, other dolls, jugs, crocks of all sizes - some w/blue, coverlet, quilts, Ruby hanging hall light, 2 Tiffany lamps, vapo cresolene lamp, G-W-W lamps, bracket lamp (complete), miniature lamps, various sizes and shapes of oil lamps, hanging lamp, Aladdin light, R.R. switch lights, R.R. lantern, skater's lantern, brass light, odd lanterns and other misc. items.

CLOCKS, BRASS, WOOD, TIN

Several clocks including weight, Regulator school clock, mantel, kitchen clocks, etc., wall telephone, brass sleigh bells, brass bucket, several pcs. refinished copper, other brass pcs., iron bank, tin toys, small iron kettles, a lot of tin and agate items, milk cans, butter bowls and prints, several churns - round and square, coffee grinder, baskets, Daquerreotypes, all sizes of picture frames, easel, broad axe, carpenter and blacksmith tools, wooden straw fork and rakes, grain flail, wooden floor towel stand, etc.

FURNITURE

Harvest table, good hutch table, several pcs. wicker, wooden ice refrigerator, oak hall seat w/mirror, 3 pc. Victorian parlor suite - needs upholstered, pie cupboard, New England ice box, flour chest, kitchen cabinet, hand victrola, Victorian dresser w/mirror, other dressers and chests of drawers, single sleigh beds, double beds, rope bed, marble top stand, Dutch cupboards, corner cupboard, school master and school desks, oak side board, wash stands, misc. stands of all kinds, cradle, several dry sinks, wood boxes, carpenter's tool box, saddlers vise, jelly cupboards, 2 curved glass china closets, round and square oak tables, drop leaf table, spool cabinet, baby carriage, trunks, blanket chests, clothes trees, New England commode, doughtray, spinning wheel, Bentwood ice cream parlor chairs and table, foot stools, piano and organ stools, child's rocker, other rocking chairs, plank bottom chairs, captains chairs, high chairs, cane seat chairs, wooden medicine cabinets, and other small wooden items; several pieces of furniture have been refinished.

This has been a good yearly sale; plan to attend.

Terms - Cash Lunch at sale

YOUNG'S ANTIQUES

Blanche and Baker Young
Belleville, Pa.

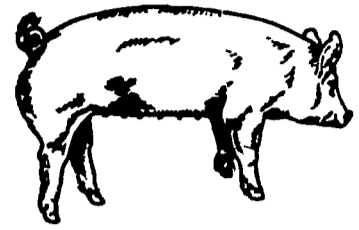
Mark Glick and Dale Gibboney — Auctioneers

BRED GILT SALE

SATURDAY, SEPTEMBER 9, 1978

1:30 P.M.

Located 8 miles North of Myerstown on Rte. 501 and 1 mile South of Rt. 22 on Rte. 501 at Bethel, Pa. Turn West at Bethel School to second farm on left at Harvey Zimmerman Farm.



40-50 BRED GILTS

Famous 3 way cross York-Hamp-Duroc. Gilts were sired by a purebred Hampshire & bred to purebred Duroc boars. Will start farrowing five days after sale. Pigs were vaccinated for erysipelas, wormed & treated for lice. No outside hogs will be sold at this sale. They are all home raised.

Conditions By:
HENRY H. MARTIN
Ph: 717-933-4279

Auctioneer - Alvin Horning

PUBLIC AUCTION

ANTIQUE, FURN., ADVERTISING
ITEMS, OLD STORE ITEMS
MUSKET, CIGAR STORE
INDIAN, & COLLECTORS ITEMS

Intending to move from my premises I will sell my entire collection which has been moved for convenience of sale & parking to the Woodsboro Fire Hall located on Elizabeth St., just off Rt. 194 in Woodsboro, Frederick County Maryland on:

MONDAY, AUGUST 28

At 9:30 AM

The Following:

Old cigar store indian (chief), No. 9 Enterprise coffee grinder, old crank telephone, smaller crank phone, cherry diamond dye cabinet with old dyes, rare wooden putman dye cabinet, tin putman dyo cabinet, C.D. Kenny sign, hanging store lamp, rare 5 cent golden orangeade dispenser, rare large majori coffee tin in original wooden crate, 2 year collection of tobacco tags, Mammy's coffee tin G.D. Kenny, old store counter, rare 1920's coca-cola advertising sign, small crate cased cokes, other coke signs & coca-cola times, many trade cards-some Frederick, 1900's councilman cigar countertop case, round country store spice bin from Frederick store, other Frederick County store items; drug bottles, tins, adv. boxes, etc., 2 brass spitoons, nicely stenciled large flour tin, cherry smash adv. sign, Delaware punch tin adv. sign (rare), hundreds of collectible bottles: Bitters bottles in original packages with contents, many, many, drug store bottles with lables & contents, medicine bottles, remedy tins & boxes, many with contents; herb & cure boxes & packages with contents as early as 1830's, wallpaper bonnet box, wallpaper brides box, stenciled tea bin, coffee tins, boxes and adv. items. Tobacco tins, all shapes and sizes, some very rare, most in excell. cond.; many early pasteboard boxes: chewing gum, gloves, pins, combs, buttons, etc. All kinds of good tobacco adv. signs, rare whiskey bottles, set of apothecary jars, many types of tins and adv. items too numerous to mention. Early cherry corner cupboard, shaker slant front desk with original buttermilk paint, early wooden fireplace mantles, 2 pc. country kitchen cupboard, Penn. Dutch wardrobe, original graining; walnut counter showcase, walnut candlestand, small old oriental rug, large braided rug, other rugs, 3 18th cent. boxlocks, tin toeware items, early iron chunk-stove with picture plate sides, old store show cases, old pine cupboard, 2 pc.; very nice pie safe, ironware items, lamps, trunks, 3 quilts, pictures & picture frames, charcoal pictures of Civil War soldiers from Frederick, Leslie's The American soldier in the Civil War, sm. coffee mill w/pewter top, wal. 6 leg. D.L. table, 1862 Springfield musket w/bayonet & scabbard, working order; solid end kit. Safe, early bedside stand w/buttermilk paint & drw., old light fixtures, pine ice chest w/onion feet, water bench, sm. glass display case, old farm tools, bed w/orig. stenciling, oak shaker barrel, carpenters chest, crocks, cachino amusement machine, tobacco cutter, capt. chair, odd chairs, post cards, wood & tin items. Many unlisted items.

INSPECTION - Sunday Aug. 27, 1-PM until 5 PM.

TERMS - Cash or approved check. Lunch by Ladies Aux. of Woodsboro Fire Co.

JAMES R. BEACHLEY,
Owner 898-7766

Austin Bohn & Chas. Funkhouser, Auctioneers.
PH. 775-7607