

Lebanon 4-H'ers achievements noted

LEBANON — Twenty-three Lebanon County 4-H'ers recently attended State 4-H Achievement Days at Pennsylvania State University. These 4-H'ers competed with some 1,800

other boys and girls from throughout the Commonwealth in judging, demonstrations, public speaking and consumer education events.

Awards to Lebanon County

4-H'ers were announced last week by Marcia C. Beppler, acting division leader, 4-H Youth, Extension Youth Program.

The horticulture judging

team placed second in the state-wide competition. Team members were Bruce Hellerick, third place individual; James Connor, fourth place individual; Melissa Weaver and Michelle Noll.

The consumerama team received blue ribbon honors. Karl Hoke, Beverly Hale, Kathy Gardner and Amy Jo Gebhard were the team members.

In the physical fitness contest the Lebanon County team won fourth place in the overall competition and placed second in the mile

relay. The team consisted of Kelly Lauer, Shannon Johnson, Tom Whitman, and Ken Weaver. Kelly Lauer captured the first place individual senior girl honor. Other individuals competing in physical fitness were: Dale Roth, Sandra Miller, and Jeff Feldenzer. The horse judging team placed 20th with Jeanne Pierce receiving a white merit ribbon in the individual competition. Other

team members were Donna Lansberry, Jody Miller, and Lisa Weikel.

Winning blue ribbons and gold medals in the demonstration contest were: Beth Shiner, "Put a Little Color in Your Life;" Megan Connor, "Kitchen Cut-Ups;" and Kristen Clemens, "Moss Baskets - To Give Your Plants a Home." Cindy Gebhard received a blue ribbon for her demonstration, "A Case for Plants."

WHAT'S NEW

NURSERY CAGES FOR PIGS

Sand Livestock Systems, Inc., has introduced new raised cages that can be stacked to increase nursery capacity, and are raised on legs to protect pigs from chilly floors.

One model is manufactured of extruded aircraft aluminum for strength, corrosion resistance, durability and easy cleaning. Available in a 4 foot by 8 foot size, with or without aluminum feeders and nipple waterers, these stackable crates can be installed in new or existing confinement units.

Another model comes equipped with heavy galvanized feeders. The units are built of square, tubular steel frames with 3/8 inch vertical rods and are available in hot dipped galvanized, or coated with rust resistant paint. Nursery pen floors can be heavy wire mesh or expanded metal

flooring. These four foot by four foot units are also stackable, and portable. Steel support legs are available.

Sand Livestock Systems builds complete, turn-key confinement facilities throughout the United States. Sand also offers a full line of confinement equipment for both new and replacement installations.

Motor vehicles in the U.S. consume about 328 million gallons of gas each day, according to the Federal Highway Administration.

Details on Sand equipment, including nursery cages, are available from Equipment Sale Division, Sand Livestock Systems, Inc., 1418 25th Street, Columbus, Nebraska 68601. Telephone 402-564-1211.



HERD FOR SALE PRIVATELY



by
SHADY LANE DAIRY SALES

35 TOP HIGH GRADE HOLSTEINS FOR SALE

Our pick from a herd of over 50. About half are due from now to Christmas. Balance in all stages of lactation.

Herd has never been pushed for top production and always well taken care of. All sired by top AI bulls & all bred to AI bulls.

This herd has been in existence for 30 years & all original cows were registered.

SHADY LANE DAIRY SALES
Quarryville, PA

Owners:

Glenn D. Fite
717-786-2750
David L. Fite
717-786-1725

SUSQUEHANNA COUNTY HOLSTEIN SALE

At the Fairgrounds, Harford, PA
FRIDAY EVENING, SEPTEMBER 8, 1978
7:00 P.M.

50 REGISTERED HOLSTEINS 50

Carefully selected by John L. Morris from breeders in Susquehanna and surrounding counties.

EXCELLENT BLOODLINES

10 by Elevation - Others by Bootmaker, Vernon, Roybrook Starflite, Kingpin, Lucky, President King, etc. Many are the offspring of top A.I. sires for several generations.

PLENTY OF BASE MILK

Most of the offering will be fresh or close at sale time, and a number selling already have records over 20,000M as young cows. Dams of animals selling have records to over 30,000M.

PLEASING TYPE

A number selling are already VG and others are definitely VG potentials. Heifers selling from EX dams. A very select group - the foundation kind!

A FEW SAMPLES:

A VG 87 Elevation with an EX mammary from a 20,000 lb. Kingpin dam. She has over 15,000M and over 600F as a 3-yr.-old.

An Elevation bred heifer due in November from a Lucky dam with 30,114M and 1380F. The grand dam is by Kingpin.

A Mayers Duke Majesty Fobes who has 21,406M and 833F as a 4-yr. old.

A 84 pt. Lucky who has 20,151M and 751F due after the sale to Astronaut.

A Good Plus President King with 22,830M and 846F due in October to Betty Chief.

Many, many more that will please the discriminating buyer.

Sponsored by
The Susquehanna Holstein Association
For catalogs write:

REMSBURG SALE SERVICE
Jefferson, Maryland 21755
Phone: 301-473-8214

or
Hewitt Sutton
Route 1, Springville, Pa. 18844
Phone: 717-965-2288

By Order of Margaret E. Meloney & Wm P. O'Neill, Esq.

IMPORTANT CHESTER COUNTY, PA. REAL ESTATE AUCTION

In The Impressive CHESTER SPRINGS Area
261± Ac. Historic "LAKE VALLEY FARM"
CHESTER SPRINGS ROAD, HORSESHOE TRAIL AND DEWEES LANE
½ Mile East of Route 401 (Conestoga Road)
W VINCENT TWP. & Portion in W. PIKELAND TWP.
TO BE SOLD REGARDLESS OF PRICE AT

ABSOLUTE AUCTION

Clear of Mortgage AS 15 PARCELS OR ENTIRETY
Parcels range from 3± to 66± Acres—ALSO a 6± Ac. Lake
Gently-Rolling Tracts with Wooded Areas

PARCEL 1 10± Ac MAIN RESIDENCE and 3 TENANT RESIDENCES
Horseshoe Trail & Both Sides of Chester Springs Rd MAIN RESIDENCE.
Impressive Plaster over-Fieldstone Colonial w/5 Bedrooms, 2½ Baths
Terraced Gardens Fieldstone Sun Porch & Patio Overlooking Lovely
Lake 2 Car Garage ALSO 3 Plaster over-Fieldstone Colonial TENANT
RESIDENCES

PARCELS 2 to 8 Partially-Wooded Tracts — From 10± to 22± Ac

PARCEL 9 3± Ac — w/Charming White Clapboard & Fieldstone
Colonial TENANT RESIDENCE

PARCEL 10: 16± Ac Partially-wooded

PARCEL 11: 30± Ac 6± Ac Lake & Waterfall

PARCELS 12 THRU 14: 10± Ac to 20± Ac

PARCEL 15: (W PIKELAND TWP) 66± Wooded Ac — Stream

DIRECTIONS From Rt 202, take Rt 401 W (Conestoga Rd) Cross Rt 113 for approx 2 mi to Chester Springs Rd. on right Turn right to property

Inspection: Sun., Sept. 10 from 1 to 4 P.M.
SALE on Prem., Under Tent, SAT., SEPT. 16 at 11 A.M.

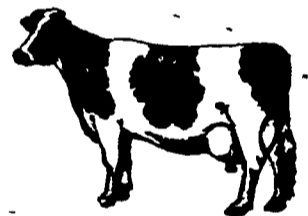
15% Deposit By Cash or Check At Time of Sale

Luis Traiman
AUCTION CO. OF PA.
Real Estate Brokers — AUCTIONEERS
1519 Spruce Street, Philadelphia, Pa 19102 (215) KI 5-4500

REQUEST ILLUSTRATED BROCHURE

Franklin - Cumberland Co. HOLSTEIN BREEDERS

SALE



at Shippensburg, Pa. Fairgrounds, leave Rte. 81 at Fayette St. Exit, watch for signs on Fayette St., "Rte. 696" on

TUESDAY EVE., SEPT. 5

Sale at 7:00 P.M.

40 REGISTERED HOLSTEINS

Most are Cert., Accredited; Tested. Offering consists of fresh and springing cows and first calf heifers, bred and open heifers, calves. Offering features cattle with quality and excellent production records, most are from artificial breeding and includes top sires, Gay Ideal dtr. over 19,000 M. 777 F., several other Gay Ideal's from dams with good records; Electron dtr., dam has over 17,000 M. 656 F.; Semrads R Maple Jupiter-Red dtr., "Red", dam milked 100 lbs., grand-dam over 22,000 M.; Mother Marthas Pride dtr. with over 18,000 M. 700 F., Has bull Calf by Bootmaker that sells; Penstate Ivanhoe dtr. VG 86, 2 records over 20,000 M. 770 F.; Another Gay Ideal, dam over 18,000 M.; Kaper dtr., dam has over 20,000 M. 798 F.; Collins Crest Majesty, Willowmonte El Demand, Citation R Maple, Skokie Coronet Climax, C Kenola Rocky, Ivanhoe Jack, Arlinda Ford Matt, Sampson dtr's., some with records and many from dams with 18,000 to 20,000 M.; Doncroft Majesty dtr. with 5 records over 20,000 M. and up to 23,000 M., V.G. 86; Heifer calves sell by Milkman, Gay Ideal, etc.

If interested in cattle for milk or breeding stock don't miss this sale. Impossible to list all animals selling but we have a top offering.

Catalogs on request to Sale Managers
Lunch at Sale. Terms Cash or Check
Ralph W. Horst, Auct. & Sale Manager,
Marion, Pa.

Fred M. Naugle, Pedigrees and Sale Manager
R.D. 7, Carlisle, Pa.

Robert Eckstine, Sale Co-Chairman
M. Thomas Sheaffer, Sale Co-Chairman

FRANKLIN - CUMBERLAND CO. HOLSTEIN BREEDERS

WHIFFLETREE FARM AUCTION

NELSON, PA., TIOGA CO.

SATURDAY, SEPTEMBER 2, 1978

9:30 A.M.

Nice 59A. farmette w/30A tillable, good barn & farm bldgs., nice home, excellent location!! Take advantage here, if you are home-shopping and want a little acreage!! Also selling 35 very nice all-age Holstein hfrs., 3 Belgian draft mares, ponies, all harnesses and gear, etc., horse-drawn items, wagons & buggies, equipment, farm machinery incl. IH corn picker, NH chopper, crusher, planter, disc, plows, many, many collectibles, 3,000 bales extra-nice hi-protein hay, and much, much more.

MR. & MRS. WENDELL BURKHOLDER - Owners.

For information, or full list mailed to you, contact Rumsey Sales, Bath, NY (607) 776-3478.