

# Berks County DHIA

(Continued from Page 97)

|                    |   |     |     |        |     |
|--------------------|---|-----|-----|--------|-----|
| Robert Yanos       |   |     |     |        |     |
| Becky              | H | 3-3 | 305 | 17,689 | 781 |
| Charles Plushanski |   |     |     |        |     |
| Hanna              | H | 4-1 | 305 | 15,196 | 677 |
| Fran               | H | 3-6 | 305 | 19,038 | 706 |
| Lassie             | H | 3-0 | 305 | 16,656 | 721 |
| Leann              | H | 3-3 | 288 | 18,739 | 717 |
| Nicki              | H | 3-2 | 305 | 18,533 | 700 |
| Peggy              | H | 3-0 | 305 | 17,053 | 668 |
| Rae                | H | 3-2 | 296 | 15,964 | 656 |
| Lass               | H | 2-2 | 305 | 17,659 | 683 |
| James G. Stutzman  |   |     |     |        |     |
| Hattie             | H | 7-4 | 305 | 16,977 | 750 |
| Dede               | H | 3-0 | 305 | 18,162 | 672 |
| Swatara Dairy Farm |   |     |     |        |     |
| #147               | H | 8-8 | 305 | 16,965 | 674 |
| #217               | H | 6-6 | 305 | 17,584 | 769 |

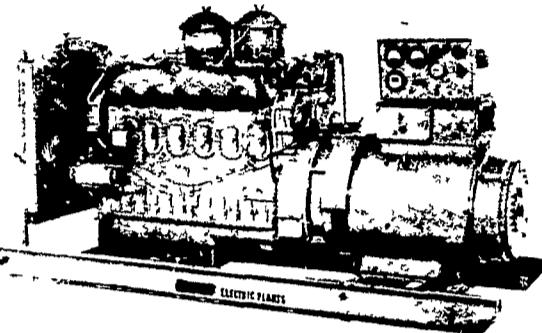
|                       |   |      |     |        |     |
|-----------------------|---|------|-----|--------|-----|
| Richard Wieder        |   |      |     |        |     |
| Molly                 | H | 6-2  | 305 | 17,110 | 675 |
| Charles D. Moyer      |   |      |     |        |     |
| Maggy 29              | H | 5-5  | 236 | 17,523 | 692 |
| Carol 32              | H | 5-0  | 305 | 16,921 | 735 |
| Daffy 34              | H | 4-9  | 305 | 17,128 | 741 |
| Russell H. Haas       |   |      |     |        |     |
| Lorna                 | H | 4-1  | 291 | 15,938 | 651 |
| John H. Stump         |   |      |     |        |     |
| Goldie                | H | 9-11 | 305 | 15,307 | 700 |
| Rozanna               | H | 4-6  | 305 | 15,476 | 677 |
| F.M. Browns Sons Inc. |   |      |     |        |     |
| #19                   | H | 6-2  | 305 | 20,618 | 681 |
| #95                   | H | 4-7  | 305 | 22,358 | 784 |
| #82                   | H | 4-1  | 288 | 19,850 | 653 |
| Richard H. Hoffman    |   |      |     |        |     |
| Sndot 29              | H | 8-9  | 305 | 20,188 | 676 |
| Donald M. Meyers      |   |      |     |        |     |
| Franny                | H | 5-6  | 305 | 19,587 | 661 |
| Lena                  | H | 4-11 | 305 | 15,177 | 707 |
| Gretta                | H | 3-8  | 305 | 16,295 | 662 |
| Stephen J. Janos      |   |      |     |        |     |
| Buffy                 | H | 4-3  | 305 | 20,183 | 693 |
| Andrew D. Stoltzfus   |   |      |     |        |     |
| Elva                  | H | 5-9  | 305 | 21,078 | 811 |
| Flicka                | H | 4-11 | 305 | 21,325 | 785 |
| Mary                  | H | 3-6  | 305 | 22,962 | 683 |
| Favor                 | H | 3-7  | 291 | 19,276 | 724 |
| Janelle               | H | 2-7  | 305 | 21,416 | 832 |
| Richard R. Troutman   |   |      |     |        |     |
| Shira                 | H | 3-8  | 305 | 18,595 | 687 |
| Alice                 | H | 5-6  | 305 | 19,130 | 772 |
| Luanne                | H | 2-3  | 305 | 17,343 | 664 |
| Larry L. Mertz        |   |      |     |        |     |
| #5                    | H | 7-0  | 305 | 17,721 | 664 |
| #45                   | H | 5-1  | 305 | 19,115 | 670 |
| #34                   | H | 3-0  | 305 | 20,247 | 654 |
| #64                   | H | 2-0  | 305 | 20,934 | 671 |
| Mervin Brubaker       |   |      |     |        |     |
| Brnic 74              | H | 2-7  | 285 | 17,449 | 654 |
| Earl R. Hafer         |   |      |     |        |     |
| #195                  | H | 5-8  | 305 | 18,126 | 708 |
| Ray E. Bicksler       |   |      |     |        |     |
| Candy                 | H | 10-9 | 305 | 24,549 | 799 |
| Tammy                 | H | 5-5  | 305 | 23,405 | 968 |
| Glenn B. Gockley      |   |      |     |        |     |
| #7                    | H | 7-6  | 305 | 23,431 | 886 |
| #21                   | H | 5-5  | 305 | 19,450 | 777 |
| Frank G. Gromlich     |   |      |     |        |     |
| Gail                  | H | 3-7  | 305 | 14,673 | 661 |

# Lancaster Farming, Saturday, August 26, 1978-101

|                      |   |      |     |        |     |
|----------------------|---|------|-----|--------|-----|
| Robert Sittler       |   |      |     |        |     |
| PJ                   | H | 3-8  | 305 | 17,164 | 697 |
| Robert C. Dreisbach  |   |      |     |        |     |
| #65                  | J | 6-2  | 304 | 15,732 | 682 |
| #94                  | J | 6-11 | 305 | 14,392 | 678 |
| Mat Mar Farms Inc.   |   |      |     |        |     |
| #20                  | H | 5-1  | 305 | 15,739 | 723 |
| Hylark Farm          |   |      |     |        |     |
| #116                 | H | 6-6  | 305 | 19,554 | 664 |
| #132                 | H | 5-6  | 305 | 20,843 | 683 |
| Da-L Farm            |   |      |     |        |     |
| #255                 | H |      | 305 | 19,826 | 704 |
| Russel K. Dietrich   |   |      |     |        |     |
| Violet               | H | 6-8  | 305 | 17,642 | 665 |
| Gem                  | H | 4-6  | 305 | 17,875 | 652 |
| Beauty               | H | 4-1  | 305 | 19,993 | 677 |
| Ontelynn Acres       |   |      |     |        |     |
| #75                  | H | 5-7  | 305 | 16,307 | 736 |
| #49                  | H | 4-10 | 305 | 18,170 | 805 |
| #30                  | H | 2-8  | 305 | 14,104 | 698 |
| Junge Farms          |   |      |     |        |     |
| Roberta              | H | 4-10 | 305 | 21,629 | 801 |
| Lorrie               | H | 3-3  | 305 | 21,369 | 774 |
| Scattered Acres Inc. |   |      |     |        |     |
| #81                  | H | 7-6  | 305 | 18,342 | 730 |
| #22                  | H | 4-2  | 305 | 17,937 | 581 |
| Raymond B. Nolt      |   |      |     |        |     |
| #20                  | H | 2-11 | 305 | 16,930 | 705 |
| Ken & Debra Dietrich |   |      |     |        |     |
| Joy                  | H | 6-0  | 274 | 20,204 | 740 |
| John C. Bartsch      |   |      |     |        |     |
| 27Prncs              | H | 3-9  | 282 | 18,560 | 719 |
| E. Daniel Leatherman |   |      |     |        |     |
| Whitty               | H | 5-2  | 298 | 18,048 | 671 |
| Myrtle               | H | 3-11 | 305 | 17,241 | 662 |
| Sis                  | H | 4-11 | 305 | 17,056 | 677 |
| Glen Mar Farm        |   |      |     |        |     |
| #60                  | H | 5-10 | 305 | 19,977 | 834 |
| Robert E. Kopfer     |   |      |     |        |     |
| #271                 | H | 2-10 | 305 | 18,862 | 812 |
| George E. Seidel     |   |      |     |        |     |
| C Clara              | H | 8-10 | 305 | 20,688 | 900 |
| Blue Mtn. Academy    |   |      |     |        |     |
| #294                 | H | 3-10 | 305 | 19,305 | 778 |
| George S. Troutman   |   |      |     |        |     |
| #17                  | H | 11-4 | 305 | 20,763 | 698 |
| Lydia                | H | 4-6  | 305 | 21,335 | 773 |
| Margo                | H | 3-0  | 291 | 17,489 | 652 |
| Yost Brothers        |   |      |     |        |     |
| #156                 | H | 2-11 | 305 | 18,094 | 658 |
| Teen Chal Farm       |   |      |     |        |     |
| #104                 | H | 6-1  | 299 | 16,146 | 698 |

## ELECTRIC GENERATING SYSTEMS

Built to Your Specifications  
Manual or Automatic  
L.P. Gas - Diesel - Gasoline



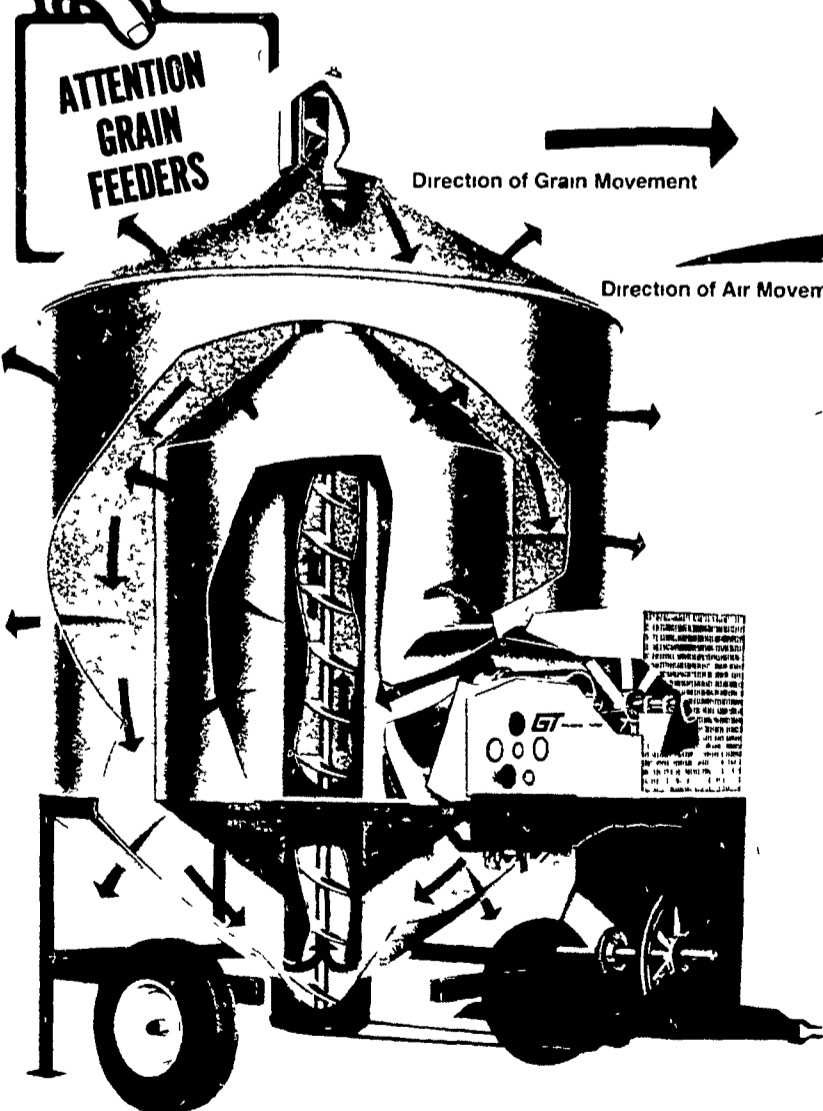
We Also Carry G.M. & Detroit Engine Parts.  
Sales - Service

## MARTIN ELECTRIC PLANTS

Isaac W. Martin, Owner  
Pleasant Valley Rd., RD2  
Ephrata, PA (717) 733-7968

**INVENTORY REDUCTION**  
WE ARE OFFERING THE BIGGEST DISCOUNT  
EVER ON ALL GT DRYERS IN STOCK

TALKING ABOUT EFFICIENT AND ECONOMY GRAIN DRYING.

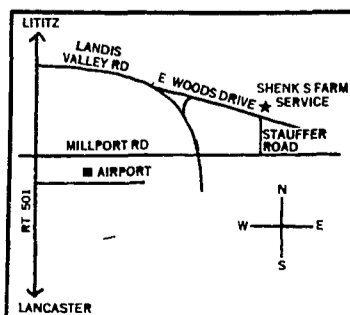


**GT Tox-O-Wik**  
Recirculating Grain Dryers are  
the answer for an inexpensive  
set-up.

### FEATURES

1. Easier to operate.
2. Completely self-contained.
3. No augers or holding bins needed.
4. Will dry 46% moisture down.
5. Grain cleaner within the dryer.

The GT Dryer is constructed to give you the most efficient grain drying on the market today.  
We will deliver anywhere.



• PLANNING LAYOUTS • SALES • INSTALLATION • SERVICE

## SHENK'S FARM SERVICE

501 E. WOODS DRIVE LITITZ, PA. 17543 PHONE: 717-626-1151  
Home Phone: Clyde Lutz 717-738-1718  
Home Phone: Curtis Cassady 717-626-1065  
Our Service Trucks Are Radio Dispatched 24 Hr. Service Offered

## DRIED BLOOD THE NATURAL FERTILIZER

Available At:  
**FRANK HERR**  
Washington Boro, Pa. - 717-872-7182  
**THE VILLAGE STORE**  
Village of Falmouth - 717-367-6962



**HI-ENERGY - VITAMINS  
MINERAL SUPPLEMENT**

**"DUTCH BELL"  
STOCK FOOD SUPPLEMENT**

**MAR-GRO  
"ALL PHOS"**

**BETTER BEEF STOCK FOOD  
SUPPLEMENT**

**TRIPLE RICH  
HOG MINERAL**

## AARON S. GROFF & SON

FARM & DAIRY STORE  
RD3, Ephrata, PA 17522 (Hinkietown) Ph: 717-354-4631  
Store Hours 7 A.M. to 9 P.M.  
Closed Tues., Wed. & Sat. at 5:30 P.M.