

# Livestock market and auction news

## St. Louis Cattle

National Stockyard  
August 17, 1978

Receipts this week 5,300; Week ago 6,000; Year ago 7,400.

Compared to last weeks close, average Choice to Prime steers unevenly 1.00-2.50, mostly 1.50-2.00 lower; Low Choice and below .50-1.00 instances 1.50 lower. Average Choice to Prime slaughter heifers mostly 1.50-2.00 lower; Low Choice and below .50-1.00 lower. Cows steady to .50 lower. Bulls 1.50-2.00 lower. Slaughter supply mainly Choice and mixed Choice and Prime 2-4 with several loads and lots 3-4 1025-1200 lb. steers around 30 per cent heifers and 15 per cent cows.

**SLAUGHTER STEERS:** Mixed Choice and Prime 2-4 including several loads and lots 3-4 1050-1250 lbs. 51.00-52.25, closing mostly 51.00, part loads 51.50. Choice 2-4 975-1300 lbs. 50.50-51.50, closing 50.50-51.00. Mixed Good and Choice 2-4 900-1225 lbs. 49.50-51.00, most closing sales 50.00-50.50. Good 2-3 900-1175 lbs. 47.50-50.00. Standard to Good 2-3 1050-1250 lbs. Holsteins 44.50-46.50.

**SLAUGHTER HEIFERS:** Mixed Choice and Prime 2-4 including several loads and lots 3-4 875-1050 lbs. 49.50-50.50, closing sales mostly 49.50. Choice 2-4 800-1050 lbs. 47.00-49.50, closing sales 800-900 lbs. 47.00-48.00. Mixed Good and Choice 2-3 700-1000 lbs. 46.50-48.50. Good 2-3 700-975 lbs. 44.00-47.00.

**COWS:** Utility and Commercial 2-4 35.00-38.00. Booning Utility 1-2 Mostly 38.00. Cutter 1-2 34.00-37.00, closing 34.00-36.50. Canner and low Cutter 1-2 30.00-34.00.

**BULLS:** Yield Grade 1-2 1000-1800 lbs. 40.00-45.00, closing 40.00-44.50. Yield Grade 1 1650-1900 lbs. 45.00-46.00, closing sales 45.00.

**FEEDERS:** Including around 1400 head. Feeder steers and heifers uneven, generally steady. Supply mainly Choice and mixed Good and Choice 400-800 lb. steers and 400-600 lb. heifers.

**FEEDER STEERS:** Choice 350-500 lbs. 65.50-72.00; 500-600 lbs. 62.00-66.50; 600-700 lbs. 58.00-62.00. Several lots fleshy 800-1000 lbs. 49.00-55.00. Mixed Good and Choice 400-700 lbs. 58.00-63.50. Good 400-600 lbs. 52.00-59.00.

**FEEDER HEIFERS:** Choice 400-600 lbs. 51.50-56.50; 600-700 lbs. 50.00-53.00. Several lots fleshy 725-875 lbs. 47.25-48.50. Mixed Good and Choice 400-500 lbs. 51.00-54.00; 500-600 lbs. 48.00-52.00. Good 400-600 lbs. 45.00-49.50.

Market courtesy of USDA.

## Belleville Auction

Belleville, Pa.  
August 16, 1978

Horses 155.00-360.00; Dairy Cows 305.00-1010.00; Shoats 22.00-53.50; Beef Cows 20.00-40.85; Beef Bulls 40.85-49.60; Steers 42.50-50.75; Lambs 40.50-57.00; Hogs 42.75-50.00; Calves 38.50-123.00; Feeder Cattle 45.75-50.50.

## Peoria Livestock

Peoria, Illinois  
August 17, 1978

Receipts estimated this week 6400; last week 4900; and last year 5700.

Slaughter steer and heifer prices declined at least 1.00 each major trading day of this week, and through Wednesday steers were fully 2.00-3.00 lower. Cows steady to 1.00 lower. Bull steady. Trading was slow on most sessions as bids and asking prices were far apart. Supply about 65 steers, 25 heifers, with the balance cows and bulls. About a dozen loads steers and heifers moved to Canadian accounts.

**SLAUGHTER STEERS:** Choice, few Prime 2-4, 1050-1200 lbs. Wednesday 49.00-51.50, load 52.00; Few 4, 1100-1200 lbs. 48.00-49.00. On Monday, mixed Good & Prime 3-4 1100-1250 lbs. 52.00-53.00. Mixed Good and Choice 2-3 950-1150 lbs. closed 48.00-49.00. Good 900-1100 lbs. 45.00-48.50.

**SLAUGHTER HEIFERS:** Choice, few Prime 2-4 900-1025 lbs. 47.00-49.25, most 47.50-48.75; 800-900 lbs. 46.00-47.50. Early, Choice with few Prime 2-4 850-1025 lbs. 48.00-50.00. Late, mixed Good and Choice 810-1050 lbs. 44.00-47.00. Good 750-950 lbs. 42.00-45.00.

**COWS:** Utility and Commercial 1-3 35.00-38.00. Cutter 1-2 33.00-36.00; Canner and low-Cutter 30.00-33.00.

**BULLS:** Yield grade 1-2 1100-1600 lbs. lbs. GM 41.00-45.00.

Market courtesy of USDA.

## Lancaster Feeder Cattle

Lancaster, Pa.  
Friday, August 11, 1978

### Feeder Cattle

Today 335  
Last Friday 488  
Last Year 674

**TREND:** Compared to last Friday feeder steers over 800 lb. mostly steady, under 800 lb. not well tested. Bulk of supply in lots of three or less.

**FEEDER STEERS:** Couple lots Choice 455-475 lb. 62.75-66.50, few 625-705 lb. 58.00-59.00; few lots 815-1020 lb. 52.50-55.00; mixed Good and Choice 880-1035 lb. 51.10-53.25; lot Good 700 lb. 51.00; Standard and Good Holsteins 595-975 lb. 47.00-48.25.

**FEEDER BULLS:** Lot Choice 1255 lb. 68.50; lot Good 585 lb. 53.75.

**FEEDER HEIFERS:** Lot mixed Good and Choice 800 lb. 48.75.

Market courtesy of USDA.

## Valley Livestock

Valley Stockyards  
Athens, Pa.

Monday, August 14

Reported receipts of 400 calves, 146 cows, 99 hogs, 34 heifers, 11 sheep, 20 lambs, 19 bulls, and 14 steers. Cattle

market some easier, and calf market higher.

Heifer calves to 95.00; veal calves 60.00-78.50; bobs, 90-110 lbs. 65.00-70.00; bobs, 80 lbs. and down 50.00-60.00; grassers and feeders 45.00-57.00; lambs 50.00-65.00; sheep 18.00-24.50; hogs, 200-250 lbs. 47.00-51.00; sows

35.00-37.00; boars 30.00-35.00; pigs 15.00-40.00; heifers

38.00-42.50; steers, good 46.00-50.00; steers, feeder 48.00-57.00; bulls 40.00-47.00; cows, good 36.00-40.00; cows, medium 33.00-35.00; cows, poor or small 28.00-32.00; ponies 30.00-180.00; goats 15.00-40.00.



## POULTRY BREEDER HOUSING NEEDED IMMEDIATELY

- 5000 heavy breeders needed immediately
- Contract or individually owned
- 215-536-3155

Mail to Box 366 M-39  
c/o LANCASTER FARMING, Lititz, PA 17543

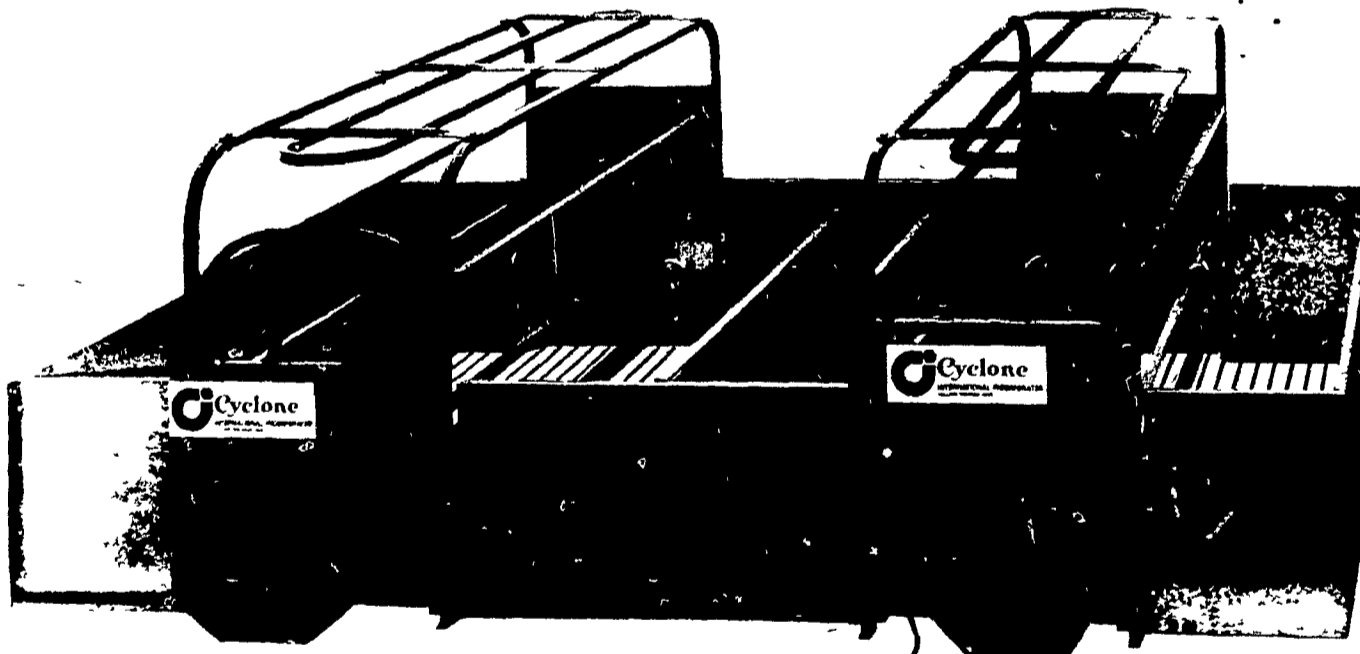
NAME \_\_\_\_\_

ADDRESS \_\_\_\_\_

TOWN \_\_\_\_\_ STATE \_\_\_\_\_

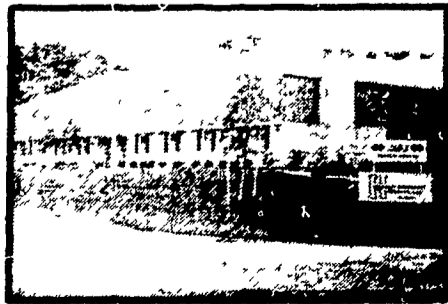
ZIP CODE \_\_\_\_\_ PHONE \_\_\_\_\_

## Cyclone EQUIPMENT SYSTEMS FOR CONFINEMENT HOG PRODUCTION



### TAKE A LOOK AT THIS QUALITY FARROWING UNIT

Designed and constructed specifically to meet the needs of the sow, this Cyclone unit has been shown to significantly reduce mortality rates particularly when used with electric heat mats in the floor and properly placed slatted floor. It incorporates draft panels to shield pigs from drafts, embossed for maximum rigidity and reinforced on the edges to assure stability adjustable bottom rail maximum handling ease through doors which can be opened from either direction welded steel bars, by eliminating nut and bolts, make cleaning easier 16 gauge square steel tubing with smooth edges to protect hogs from injury adaptable to either dry or liquid feeding (feed front also serves as a door) adjustable backup bar to prevent injury of pigs at birth epoxy coated for easy cleaning and long life.



# H

**HERSHEY EQUIPMENT COMPANY, INC.**

SYCAMORE INDUSTRIAL PARK  
225 PLANE TREE DRIVE  
LANCASTER, PA 17603  
(717) 393-5807

Route 30 West At  
The Centerville Exit

AUTHORIZED  
**Cyclone**  
DISTRIBUTOR