

# Poultry Market Reports

## Weekly New York Egg Market

From Monday, August 7 to Friday, August 11

	Mon.	Tues.	Wed.	Thurs.	Fri.
<b>WHITE</b>					
Jumbo	74	72	72	72	72
Ex Large	68	66	66	66	66
Large	64	62	62	62	62
Mediums	59	58	58	58	58
Pullets	44	44	44	44	44
Peewees	32	32	32	32	32
<b>BROWN</b>					
Large	70	68	68	68	68
Mediums	Unquoted				
Pullets	Unquoted				
Peewees	Unquoted				

### Off Grade

Large	58	58	58	58	58
Checks	33	33	33	33	33

Tone: Supplies fully adequate, inquiry improved, market about steady.

Copyright 1977 Urner Barry Publications

## N. E. Weekly Shell Egg Report

August 8, 1978

Prices paid per dozen Grade 'A' Brown eggs in cartons delivered to retail stores.

	Ex. Large	Large	Medium	Small
MASS. +	69-80	68-78	63-67	44-48
Mostly	70-72	69-71	64-66	45-47
NEW HAMP.	63-69	62-68	57-63	38-44
Mostly	64-65	63-64	58-59	39-40
R.I.	76-77	76-77	69-70	48-49
VERMONT	71-81	70-79	65-72	--
Mostly	73-74	72-73	67-68	--
MAINE	69-72	68-71	63-66	44-47

+ Includes Central and Western Sections Only.

## Nest Run Eggs

Prices are from Egg Clearinghouse, Inc., (ECI) Durham, N.H. and reflect trading prices for gradable nest run eggs (GNR) on ECI, a nationwide trading center for producers, packers and marketers. GNR eggs are classified by weight in 30-dozen cases, and traded in lots of either 300 or 750 cases. Prices are FOB buyers dock, and are computed Tuesday and Thursday of each week. This week's prices for each classification were:

Classification	New Weight Per Case	Tuesday	Thursday
Extra Large	51 lbs.		
Class 1 - Large	48 lbs.	49	48
Class 2 - Large	45 lbs.	45	45
Class 3 - Medium	42 lbs.	48	47
Class 4 - Small	39 lbs.	37	36
Breaking Stock	48 lbs.	42	41
Checks	48 lbs.	33	33

# Lancaster Farming

P.O. Box 366 - Lititz, PA 17543  
 Office: 22 E. Main St., Lititz, PA 17543  
 Record-Express Office Building  
 Phone: Lancaster 717-394-3047  
 or Lititz 717-626-1164

Robert G. Campbell, Publisher  
 Dieter Krieg, Editor

Kendace Borry, Associate Editor  
 Laurel Shaeffer, Berks County Correspondent  
 Joyce Bupp, York County Correspondent

Subscription Price:  
 \$6.00 per year; \$10.00 - 2 years

\$8.00 per year outside of  
 PA, NJ, MD, DE, NY, VA & WV

Established November 4, 1955

Published every Saturday  
 by Lancaster Farming, Lititz, PA

Second Class Postage paid at Lititz, PA 17543

For address change form or new subscription  
 see Classified Section.

Members of Newspaper Farm Editors Assn., Pa. Newspaper  
 Publishers Association, and National Newspaper Association.

## Philadelphia Eggs

August 9, 1978

### Eggs:

Prices unchanged to lower on all sizes. Cartoning demand fair but lacks desired aggressiveness to readily clear fully adequate offerings. Undertone steadier. Prices to Retailers: Sales to volume buyers, consumer grades white eggs in cartons delivered: Store door.

A Extra Large 61-69; A Large 60-67; A Medium 55-59.

## Baltimore Eggs

August 9, 1978

### Eggs:

Prices unchanged to lower. Cartoning demand fair. Offerings of jumbos and extra large barely adequate to short, balance adequate. Undertone about steady.

Cartoned Eggs: Prices to retailers, state graded (min 1 case sale).

Grade A Large 73-76; Grade A Medium 67-71.

## Delmarva Poultry

August 9, 1978

Ready-to-cook movement very good. Additional inquiry going unfilled in most quarters. Slaughter schedules moderately heavy. Today's LTL asking prices mostly 49 on plant and 50 on US Grade A. Advance interest slow in developing. Live supplies fully adequate at desirable weights. Percent of trim undergrades running heavy at most plants. Undertone fully steady. Current broiler/fryer negotiated prices for immediate includes mostly multiple-drop shipments to New York City from Delmarva.

Range US Grade A 48-50; Plant Grade 47-48½; Premium X US Grade A 54.00; Premium X Plant Grade 52.00.

Wtd. avg. US Grade A 48.95; Plant Grade 48.06; Premium X US Grade A 54.00; Premium X Plant Grade 52.00.

X - includes special services, selected competitive brands, etc.

## Eastern Pa. & N.J. Poultry

August 9, 1978

Prices unchanged to higher on light type hens. Processor demand good for barely adequate farm offerings of light type hens. Offerings of heavy type adequate to barely adequate for a not better than fair call.

Prices Paid at Farm:  
 Light type hens 8-10 mostly 9½-9¾; FOB plant 11½-12, mostly 12; Heavy type hens TFEWR.



# Hay Markets

## Good's Hay Auction

Wednesday, August 9

Total 154 loads.  
 Mixed hay 70-90; alfalfa hay 84-92; straw 86-88; timothy hay 78-87.50; oats, per bushel 1.75; rye per bushel 2.05-2.60; corn 65-76.

## Green Dragon Hay

Ephrata, Pa.

August 4, 1978

### Prices Per Ton:

17 loads hay & 11 loads straw.

Alfalfa, 2 loads 60.00 and 92.00; Timothy, 2 loads 51.00 and 61.00; Mixed hay 50.00-79.00, one at 92.00; Clover, one load at 57.00; Grass hay, one load at 40.00; Straw 60.00-89.00; Ear Corn, 21 loads 74.00-80.50, one at 82.00; Oats, 4.77 bu. at 1.35 per bushel. 4.98 bu. at 1.20 per bushel.

## Vintage Hay

Thursday, August 10

Mulch hay 47; straw 63; ear corn 75-79; rye 1.70 per bushel.

## Regional Hay

August 7, 1978

(All hay No. 2 and better, prices paid by dealers at the farm & per ton.)

Hay and Straw slow and steady.

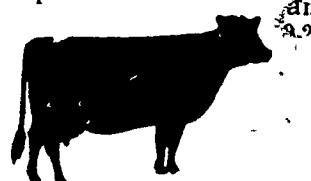
Alfalfa 55.00-60.00; Mixed hay 50.00-55.00; Timothy hay 40.00-50.00; Straw 50.00-60.00; Mulch 20.00-35.00.

## New Holland Hay

New Holland Sales Stables

Monday, August 7, 1978  
 Total 49 loads.

Alfalfa 65-95; timothy 75-100, mixed hay 50-66; 1 load meadow grass 65; straw 69-96; corn 66-79; 1 load oats, 1.65 per bushel; 1 load rye, 2.70 per bushel.



## TOP OF THE HOG MARKET

DANVILLE LIVESTOCK MARKET  
 OLD ROUTE 11  
 DANVILLE, PA 17821  
 717-275-2880



Market your hogs the auction way.

SALE EVERY  
 MONDAY 2 P M

Melvin M. Lehman  
 (Owner)

## Fogelsville Poultry

August 8, 1978

Prices paid dock weights, cents per pound, except where noted.

Hens, heavy type 19-29, mostly 25-29; pullets 44-54, mostly 44-48; roasters 27-33, mostly 30-33; ducks 50-55; drakes 55-69, mostly 69; rabbits 20-47, mostly 30-38; pigeons, per pair 1.15; jumbo squabs 2.65.

Total coops sold 191.

## Moyer's PACKAGE DELIVERY SERVICE.



Moyer's delivers a Pullet Package. What you pay for is a ready-to-lay pullet fed to optimum body weight, properly debeaked and vaccinated, delivered by courteous drivers in clean coops and delivery trucks.

What you do not pay for is all birds in the growing unit — good, bad, and cockrels; feed wastage, mortality losses, hit-or-miss management and servicing procedures.

The only thing the Moyer's Pullet Package lacks is a bow!

## Moyer's CHICKS, INC.

DEKALB  
 BROWN & WHITE  
 EGG LAYERS

Quakertown, PA 18951  
 (215) 536-3155

HUBBARD  
 WHITE MT.  
 BROILERS