

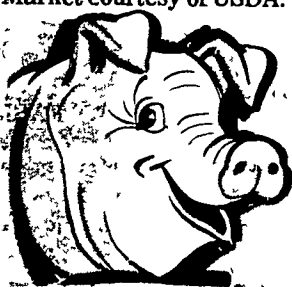
# Hog Markets

## Lancaster Hog

Lancaster, Pa.  
**Saturday, August 5**  
 Total 725 head.  
 No. 1, 200-235 lb. 51.00-51.50; No. 1-2 200-245 lb. 49.75-50.50; No. 3, 200-255 lb. 49.50-50.00; heavystraights, 270-280 lbs. 44.50-46.50.  
**Monday, August 7**  
 HOGS: Barrows and gilts 50 to mostly 1.00 higher.  
**BARROWS AND GILTS:** US 1-2 195-250 lb. 49.75-51.50, mostly 50.50-51.35; Few US 1 200-235 lb. 52.00-52.75; Few US 2-3 265-270 lb. 48.00-48.35.  
**Wednesday, August 9**  
 HOGS: Barrows and gilts steady to 25 higher.  
**BARROWS AND GILTS:** US 1-2 197-250 lb. 50.35-51.75, lot 51.85, mostly 50.75-51.50; Few US 1 200-235 lb. 52.00-52.75.

## Peoria Hogs

**Thursday, August 10**  
 HOGS: 2500 - Receipts currently 600 under estimate. Barrows and gilts moderately active, opening 25-50 lower than the bulk of Wednesday's sales. US 1-2 200-230 lb. 49.50-50.00, 75 head 50.25; 230-250 lb. 49.00-49.50.  
 SOWS: Weak to mostly 50 lower. US 1-3 350-500 lb. 43.00-43.50; 500-650 lb. 44.00-44.50.  
 Market courtesy of USDA.



## Vintage Hog

**Saturday, August 5**  
 No. 1, 200-240 lbs. 50.00-51.00; No. 2-3 200-245 lbs. 49.00-50.00; lightweights 165-180 lbs. 45.25-47.25; heavystraights 250-275 lbs. 47.00-49.25; sows 37.50-40.25; boars 35.00-36.50.  
**Wednesday, August 9**  
 No. 1 51.00-51.75; No. 2-3 50.00-51.00; lightweights, 180-195 lbs. 48.00-50.75; heavystraights, 250-270 lbs. 48.50-49.75; sows 36.50-39.00; boars 35.50-39.50.

## New Holland Feeder Pigs

New Holland, Pa.  
**Wednesday, August 9, 1978**  
**Feeder Pigs**  
 Today 1450  
 Last Wednesday 1224  
 Last Year 1155  
**TREND:** Compared to last Wednesday feeder pigs steady to 5.00 higher. All pigs weighed on arrival and sold by the hundred weight.  
 US 1-2 30-40 lb. 117.00-137.00, 40-52 lb. 107.00-124.00, 58-82 lb. 77.00-96.00; US 2-3-27-41 lb. 95.00-130.00, 43-54 lb. 86.00-117.00, 55-82 lb. 70.00-92.00.

## Indianapolis Hogs

**Thursday, August 10, 1978**  
 HOGS: 1300 - Barrows & gilts moderately active, steady to 25 lower. US 1-2 200-235 lb. 49.50-49.75, about 75 head 50.00.  
 SOWS: Moderately active, 50 lower. US 1-3 325-450 lb. 41.50-42.50; 450-600 lb. 42.50-44.50; 1 small package 45.00.

## New Holland Pigs

New Holland, Pa.  
**Monday, August 7, 1978**  
**Hog Auction**  
 Today 1333  
 Last Monday 1435  
 Last Year 1457  
**TREND:** Compared to last Monday barrows and gilts 1.50-1.75 higher.  
**BARROWS AND GILTS:** US 1-2 200-245 lb. 49.50-50.50; Few US 1 200-235 lb. 50.50-51.50.

## St. Louis Hogs

**Thursday, August 10**  
 HOGS: 5000 - Barrows & gilts moderate, steady to 50 lower. US 1-2 200-240 lb. 49.50-49.75, about 225 head 49.85-50.00. Mixed US 1-3 230-250 lb. 49.00-49.50.  
 SOWS: Steady to 50 lower. US 1-3 300-450 lb. 42.00-42.25; over 450 lb. 43.00-44.00.  
 Market courtesy of USDA.

## Lancaster Grain

**Friday, August 11, 1978**  
 These prices are made up of the average prices quoted by a number of participating area feed and grain concerns. It should be noted however, that not every dealer or broker handles each commodity. All prices are per bushel except ear corn and soybean meal which are per ton.  
 The average prices quoted Friday, August 4 are as follows:

	Bid+	Offered+
Ear Corn	69.00	78.00
Shelled Corn	2.30	2.53
Barley	1.70	1.85
Oats		
Local	1.30	1.55
Western	1.65	1.80
Wheat	3.18	3.60
Soybeans	5.70	
Soybean Meal		220.00

## Pennsylvania Grain

August 7, 1978  
 Compared with last Monday's market, for Southeastern, Central and South Central Pennsylvania: Corn steady to 5 cents lower. Wheat barley to 3 cents lower. Barley mostly 1 cent to 2 cents lower. Oats weak to 7 cents lower. Ear Corn unevenly steady.  
 Prices paid delivered to dealers dock (All prices per bushel, except for Ear Corn per ton.)

### Southeastern, Pa.

Corn No. 2-y range 2.30-2.60, average 2.42; Wheat No. 2 range 3.10-3.35, average 3.17; Barley No. 3 range 1.60-1.80, average 1.67; Oats No. 2 range 1.25-1.50, average 1.34; Ear Corn range 64.00-75.00, average 70.51.

### Central Pa.

Corn No. 2-y range 2.25-2.50, average 2.37; Wheat No. 2 range 2.95-3.20, average 3.05; Barley No. 3 range 1.50-1.70, average 1.61; Oats No. 2 range 1.25-1.45, average 1.33; Ear Corn range 60.00-65.00, average 63.00.

### So. Central Pa. (Franklin and Cumberland Counties)

Corn No. 2-y range 2.35-2.55, average 2.45; Wheat No. 2 range 3.00-3.20, average 3.05; Barley No. 3 range 1.50-1.85, average 1.74; Oats No. 2 range 1.30-1.60, average 1.47; Ear Corn range 60.00-70.00, average 65.75.

### Southeastern, Central and South Central Summary

Corn No. 2-y range 2.25-2.60, average 2.40; Wheat No. 2 range 2.95-3.35, average 3.10; Barley No. 3 range 1.50-1.85, average 1.67; Oats No. 2 range 1.25-1.60, average 1.36; Ear Corn range 60.00-75.00, average 66.60.

### Western Pa.

Corn No. 2-6 range 2.20-2.40, average 2.29; Wheat No. 2 range 2.65-2.85, average 2.76; Barley No. 3 range 1.50-1.55, average 1.53; Oats No. 2 range 1.20-1.30, average 1.27.

# Futures Trading

(Closing Bids as of Thursday, August 10, 1978)

	Chicago Cattle	Chicago Hogs	New York Maine Potatoes	Chicago Fresh Eggs
Aug.	51.65	48.70		
Sept.				55.40
Oct.	49.20	44.70		53.70
Nov.			5.16	57.25
Dec.	51.20	45.70		59.60
Jan.				56.50
Feb.	52.75	44.20		
March			5.78	
April			6.15	
May			7.14	

Trend - Cattle are lower, Hogs are lower, Potatoes are higher, and Eggs are higher.  
 Market Provided by Commodity Department Reynolds Securities, Inc.

# Chicago Grain Futures

(Closing Bids as of Thursday, August 10, 1978)

	Corn	Wheat	Soybeans	Soybean Meal
Aug.			6.20½	158.90
Sept.	2.19	3.12¾	6.10	160.10
Oct.				161.00
Nov.			6.01	
Dec.	2.25	3.09¼		162.60
Jan.			6.08	163.70
Mar.	2.33½	3.06½	6.15¾	
May	2.38½	3.04¾		

Trend - Corn is steady, Wheat is higher, Soybeans are higher, Soybean Meal is mixed.  
 Market Provided by Commodity Department Reynolds Securities, Inc.

# U.S. Inspected Livestock Slaughter

Estimated Daily Livestock Slaughter Under Federal Inspection

	CATTLE	CALVES	HOGS	SHEEP
Week to Date	550,000	52,000	1,099,000	76,000
Same Period Last Week	552,000	52,000	1,072,000	79,000
Same Period Last Year	580,000	68,000	1,057,000	93,000

Market courtesy of USDA.

## "Hot-Shot" Products Sales & Service

## S. K. SHOTZBERGER, INC.

### LIVESTOCK TRANSPORTATION

Gene Zwally, President  
 Marvin Johns, Secy. Treasurer  
 P.O. Box 925, Lancaster, PA 17604  
 Phone: 393-4641 (day or night)

## J.M. HOOBER Inc. LANCASTER STOCKYARDS

Your Livestock Broker  
 Serving you since 1895.

- Up-to-date market information.
- We sell slaughter cattle, fat hogs, calves, lambs, feeder pigs.
- Suppliers of feeder cattle.

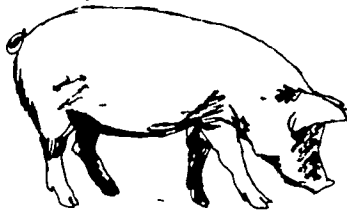
### NEXT FEEDER PIG SALE - AUGUST 15, 1978

Consign your livestock to J.M. Hooper Inc., where it will receive personal care and service.

Call Us:  
 Phone (717) 397-6191 - Home 569-2084  
 Small Stock Division 397-6191 - Home 626-5659

# ATTENTION CATTLE FEEDERS

Do you want to make buying your stockers and feeders easy. It can be very simple. Just call and give us your order. All orders filled to your exact specifications. Call us anytime. We can be very helpful.



## NEXT FEEDER PIG SALE

TUESDAY, AUG. 15 - 1 P.M.



Consign all your feeder pigs to Walter M. Dunlap & Sons where they will be handled by a capable and experienced staff.

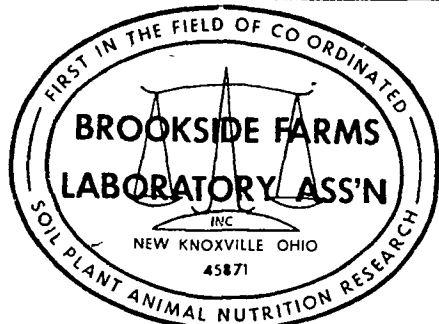
**FEEDER PIGS RECEIVED FROM 6 A.M. TO 11 A.M.**

## WALTER M. DUNLAP & SONS

### LANCASTER STOCKYARDS

Consignors can get state tags at our office, thereby saving 25% marketing expense.

**For Further Information, Call: 717-397-5136**



National Reputation - Local Service

## CONTACT: JOHN CAMPBELL

Atglen, PA  
 (215) 593-5529

## GARY McGEE

Spring Run, PA  
 (717) 349-7300

## DAN DERR

Conowingo, MD  
 (301) 378-3280