

# Hog Markets

## Lancaster Market

Lancaster, Pa.  
Monday, July 31, 1978  
HOGS: Barrows and gilts 25-1.00 higher, mostly 50-1.00 up.  
BARROWS AND GILTS: US 1-2 200-245 lb. 48.35-49.50, few 50.00; Few US 1 200-235 lb. 50.00-50.50; US 2-3 250-265 lb. 46.50-47.00.

## New Holland Feeder Pig

New Holland, Pa.  
Wednesday, August 2, 1978  
Feeder Pigs  
Today 1224  
Last Wednesday 1185  
Last Year 939  
TREND: Compared to last Wednesday feeder pigs uneven, US 1-2 many 10.00-20.00 higher instances 25.00 up, US 2-3 firm to 5.00 higher. All pigs weighed on arrival and sold by the hundred weight.  
US 1-2 25-40 lb. 117.00-132.00, 40 head 28 lb. 148.00; 40-51 lb. 104.00-127.00; 55-70 lb. 92.00-115.00.  
US 2-3 28-40 lb. 92.00-126.00; 45-70 lb. 86.00-121.00.  
Market courtesy of USDA.

## Peoria Hogs

Thursday, August 3, 1978  
HOGS: 2800 - Barrows and gilts fairly active, steady. US 1-2 210-230 lb. 48.50-49.00; 230-250 lb. 48.00-48.50, some 40-210 lb. 46.00-48.50.  
SOWS: Steady instances 50 lower. US 1-3 350-500 lb. mostly 42.00, few 42.50: 500-650 lb. 42.25-42.75, mostly 42.50.  
Market courtesy of USDA.

## Lancaster Auction

Lancaster, Pa.  
Wednesday, August 2, 1978  
HOGS: Barrows and gilts 75-1.00 higher, instances 1.25 up.  
BARROWS AND GILTS: US 1-2 195-240 lb. 49.25-50.85, Mostly 49.50-50.25; 240-250 lb. 48.50-49.25; Few US 1 200-235 lb. 51.50-51.75.

## St. Louis Hogs

Thursday, August 3, 1978  
HOGS: 5000 - Barrows and gilts fairly active, uneven, weights under 250 lb. steady to firm instances 25 higher, weights over 250 lb. weak to 25 lower. US 1-2 200-240 lb. 48.25-48.50, about 115 head 48.60-48.75; Mixed US 1-3 230-250 lb. 48.00-48.25; US 2-3 240-270 lb. 47.25-48.00.  
SOWS: 50 lower. US 1-3 300-600 lb. 41.50-42.00.  
Market courtesy of USDA.

## New Holland Hog

New Holland, Pa.  
Monday, July 31, 1978  
Hog Auction  
Today 1435  
Last Monday 1340  
Last Year 1208  
TREND: Compared to last Monday barrows and gilts steady to weak, instances 25 lower.  
BARROWS AND GILTS: US 1-2 210-250 lb. 47.75-48.60, few 48.85-49.10, few 195-207 lb. 47.35-47.75; Few US 1 205-237 lb. 49.00-49.50; Few US 2-3 220-256 lb. 46.10-47.85.  
Market courtesy of USDA.

## Lancaster Feeder Pig

Lancaster, Pa.  
Tuesday, August 1, 1978  
Feeder Pigs  
Today 1464  
Two weeks ago 930  
Last Year 827  
TREND: Compared to two weeks ago feeder pigs 5.00-10.00 higher, instances up to 20.00 higher. All pigs weighed on arrival and sold by the hundred weight.  
US 1-2 25-40 lb. 113.00-130.00, 19 head 140.00; 40-56 lb. 97.00-120.00; 50-80 lb. 82.00-99.00.  
US 2-3 29-40 lb. 112.00-128.00; 40-50 lb. 90.00-107.50, few 50-78 lb. 77.00-91.50.  
Market courtesy of USDA.

## Vintage Hogs

Saturday, July 29  
No. 1, 200-230 lbs. 49.00-50.35; No. 2-3, 200-250 lbs. 48.00-49.00; lightweights, 175-195 lbs. 45.50-47.00; heavystraights 250-275 lbs. 46.00-48.35; sows 36.50-39.25; boars 34.00-39.25.  
Wednesday, August 2  
No. 1, 210-240 lbs. 49.00-50.25; No. 2-3, 210-250 lbs. 48.00-49.00; lightweights, 175-250 lbs. 47.00-49.00; heavyweights 250-270 lbs. 46.50-48.75; sows 36.00-38.00; bors 34.50-35.75.

## Indianapolis Hogs

Thursday, August 3, 1978  
HOGS: 1000 - Barrows and gilts slow, mostly steady. US 1-2 200-240 lb. 48.00-48.50.  
SOWS: Active, 25 lower on limited test Few US 1-3 325-375 lb. 41.00; 485-600 lb. 42.50-42.75.



## Lancaster Grain

Friday, August 4, 1978  
These prices are made up of the average prices quoted by a number of participating area feed and grain concerns. It should be noted however, that not every dealer or broker handles each commodity. All prices are per bushel except ear corn and soybean meal which are per ton.  
The average prices quoted Friday, August 4 are as follows:  
Bid+ Offered+  
Ear Corn 71.00 81.00  
Shelled Corn 2.50 2.70  
Barley 1.75 1.92  
Oats  
Local 1.32 1.55  
Western 1.68 1.83  
Wheat  
Soybeans 5.80  
Soybean Meal 233.65

## Pennsylvania Grain

Compared with last Monday's market, for Southeastern, Central and South Central Pennsylvania: Corn steady to 5 cents lower. Wheat mostly steady. Barley unevenly steady to weak. Oats steady to 15 cents lower. Ear Corn steady to \$2 lower.  
Prices Paid Delivered To Dealers Dock (All prices per bushel, except for Ear Corn per ton.)  
Southeastern Pa.  
Corn No. 2-y range 2.35-2.60, average 2.47; Wheat No. 2 range 3.10-3.30, average 3.21; Barley No. 3 range 1.60-1.80, average 1.68; Oats No. 2 range, 1.30-1.50, average 1.41; Ear Corn range 65.00-75.00; average 69.53.  
Central Pa.  
Corn No. 2-y range 2.30-2.52, average 2.40; Wheat No. 2 range 2.95-3.20, average 3.07; Barley No. 3 range 1.50-1.70, average 1.63; Oats No. 2 range 1.25-1.55, average 1.41; Ear Corn range 60.00-65.00, average 63.89.  
So. Central Pa. (Franklin and Cumberland Counties)  
Corn No. 2-y range 2.35-2.55, average 2.47; Wheat No. 2 range 3.00-3.20, average 3.06; Barley No. 3 range 1.60-1.85, average 1.75; Oats No. 2 range 1.40-1.65, average 1.51; Ear Corn (Turn to Page 14)

# Futures Trading

(Closing Bids as of Thursday, August 3, 1978)

	Chicago Cattle	Chicago Hogs	New York Maine Potatoes	Chicago Fresh Eggs
Aug.	51.90	48.45		
Sept.				55.40
Oct.	50.40	45.55		53.95
Nov.			5.16	57.25
Dec.	52.95	46.70		59.10
Jan.				56.50
Feb.	54.40	45.35		
March			5.76	
April			6.10	
May			7.11	

Trend - Cattle are lower, Hogs are lower, Potatoes are higher, and Eggs are mixed.  
Market Provided by Commodity Department Reynolds Securities, Inc.

# Chicago Grain Futures

(Closing Bids as of Thursday, August 3, 1978)

	Corn	Wheat	Soybeans	Soybean Meal
Aug.			6.22½	162.30
Sept.	2.20¾	3.12¾	6.11¾	161.80
Oct.				161.80
Nov.			6.01½	
Dec.	2.27¾	3.11¾		162.50
Jan.			6.07	163.40
Mar.	2.36	3.11	6.15	166.20
May	2.41¾	3.07½		

Trend - Corn is lower, Wheat is higher, Soybeans are higher, Soybean Meal is mixed.  
Market Provided by Commodity Department Reynolds Securities, Inc.

# U.S. Inspected Livestock Slaughter

Estimated Daily Livestock Slaughter Under Federal Inspection

	CATTLE	CALVES	HOGS	SHEEP
Week to Date	552,000	52,000	1,072,000	79,000
Same Period Last Week	540,000	51,000	1,050,000	81,000
Same Period Last Year	557,000	65,000	1,022,000	94,000

Market courtesy of USDA.

Eight tractors, ten trailers ready to serve you... 40', 45' and Possum Belly trailers.

## S. K. SHOTZBERGER, INC.

LIVESTOCK TRANSPORTATION  
Gene Zwally, President  
Marvin Johns, Secy.-Treasurer  
P.O. Box 925, Lancaster, PA 17604  
Phone: (717) 393-4641 (day or night)

## J.M. HOOBER Inc. LANCASTER STOCKYARDS

Your Livestock Broker  
Serving you since 1895.

- Up-to-date market information.
- We sell slaughter cattle, fat hogs, calves, lambs, feeder pigs.
- Suppliers of feeder cattle.

NEXT FEEDER PIG SALE - AUGUST 15, 1978

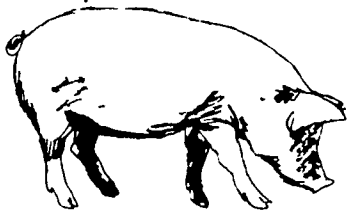
Consign your livestock to J.M. Hooper Inc., where it will receive personal care and service.  
Call Us:  
Phone (717) 397-6191 - Home 569-2084  
Small Stock Division 397-6191 - Home 626-5659



CONTACT:  
**JOHN CAMPBELL**  
Atglen, PA  
(215) 593-5529  
**GARY MCGEE**  
Spring Run, PA  
(717) 349-7300  
**DAN DERR**  
Conowingo, MD  
(301) 378-3280

# ATTENTION CATTLE FEEDERS

Do you want to make buying your stockers and feeders easy. It can be very simple. Just call and give us your order. All orders filled to your exact specifications. Call us anytime. We can be very helpful.



**NEXT FEEDER PIG SALE**  
**TUESDAY, AUG. 15 - 1 P.M.**



Consign all your feeder pigs to Walter M. Dunlap & Sons where they will be handled by a capable and experienced staff.

**FEEDER PIGS RECEIVED FROM 6 A.M. TO 11 A.M.**

## WALTER M. DUNLAP & SONS

### LANCASTER STOCKYARDS

Consignors can get state tags at our office, thereby saving 25¢ marketing expense.

**For Further Information, Call: 717-397-5136**