

Livestock market and auction news

Pennsylvania Grain

(Continued from Page 3)
average 60.00-70 00, average 66.08

Southeastern, Central and South Central Summary

Corn No 2-y range 2 35-2 55, average 2 44; Wheat No 2 range 3 00-3 25, average 3.13; Barley No 3 range 1 60-1 80, average 1 68; Oats No 2 range 1 30-1 55, average 1 43; Ear Corn range 60 00-72 00, average 66 73.

Western Pa.

Corn No 2-y range 2 20-2 43, average 2 30, Wheat No 2 range 2 70-2 85, average 2 79, Barley No 3 range 1 50-1 60, average 1 53, Oats No 2 range 1 25-1 40, average 1 33

Omaha Cattle

August 3, 1978

Weekly 51 - cattle - compared with the previous week's close - closing prices on slaughter steers and heifers were 25-50 cents lower in reflection of bearish conditions prevailing in the carcass beef trade at the wholesale level Cows were 3 00-4 00 lower, instances 4 50-5 00 off in a generally dull trade Bulls were 1 00-2 00 lower

Four day receipts 13,700, compared 13,000 previous week and 13,900 a year ago Fed cattle prices were fairly stable on the opening session but downward pressure developed as carcass prices declined Buyers were generally cautious and selective as they sought to maintain a reasonable ratio between live prices and carcass realizations, and usually were not aggressive for numbers beyond immediate requirements Much of the steer and heifer supply was good to average-Choice with a modest showing Choice and Prime included Slaughter steers made up approximately 39 per cent and heifers 32 per cent, cows comprised 13 per cent and feeders 12 per cent

STEERS The forepart of week, four loads Choice and Prime 3-4 1104-1283 lbs 55 35-55 50 At midweek, five loads Choice and Prime 3-4 1140-1200 lbs 55 00 Choice 2-4 1000-1300 lbs closed 53 50-54 75 Mixed Good and Choice 2-3 975-1250 lbs 52 50-53 50 Good 2-3 50 00-52 50, Holsteins 47 00-50 00 Standard and Good 2-3 45 00-46 50

Average of 1s 214, detailed quotations, for Choice 900-1100 lb steers this week 53 92 Choice 1100-1300 lbs 54 52 Average weight steers first three days 1120 lbs as compared 1144 lbs previous week Average weight heifers first three days 968 lbs as compared 962 lbs previous week

HEIFERS Early, three loads Choice and Prime 3-4 997-1022 lbs 53 25-53 50 At midweek, two loads and part load same grade 3-4 960-1035 lbs 52 75-53 00 Choice 2-4 875-1050 lbs 51 00-52 50 Mixed Good and Choice 2-3 825-1000 lbs 49 00-51 00 Good 2-3 45 00-48 50 Small lots Standard and Good 2-3 43 00-44 50

COWS Utility and

Commercial 2-4 34 50-36 50, few 37.00 Cutter 33 50-35 00 Canner and low-Cutter 31 00-33.50

BULLS: 1-2 1300-1800 lbs 43.00-47 00, few individual 1 48 00-49 00

FEEDERS. Near 1000 head mostly Choice 975-1106 lb steers 52 50-53 50.

Market courtesy of USDA

St. Louis Cattle

National Stockyards August 3, 1978

Receipts this week 6,300 Week ago 6,100 Year ago 6,400 Compared to the previous weeks close, Choice and Mixed Choice and Prime steers weak to mostly 50 lower low Choice and below steady to weak. Choice and Mixed Choice and Prime slaughter heifers 50-1 00 lower; low Choice and below steady to weak Cows unevenly 2 50-3 50 lower Bulls weak to 50 lower Slaughter supply mainly Choice 2-4 1025-1200 lb steers Around 35 per cent heifers and 15 per cent cows

SLAUGHTER STEERS Mixed Choice and Prime 2-4 1050-1250 lbs. 53 00-54.00, load and part load 54 25. Choice 2-4 950-1275 lbs 51 50-53 50, mostly 51 50-53.00 Mixed Good and Choice 2-4 900-1225 lbs 51 00-52.50 Good 2-3 900-1200 lbs 48 00-51 00 Package mostly Good 2-3 1150 lb holsteins 48 50 Standard to Good 2-3 1050-1325 lb holsteins 46 00-47 50

SLAUGHTER HEIFERS Mixed Choice and Prime 2-4 875-1050 lbs 50 75-51 50 Choice 2-4 900-1050 lbs 49 00-51 00, 800-900 lbs 48 00-49 00 Mixed Good and Choice 2-3 700-1000 lbs 47 00-48 50 Good 2-3 700-1000 lbs 45 00-47 00

COWS Utility and commercial 2-4 34 50-40 00, closing 34 50-37 00 Boning Utility 1-2 37 50-41 50, closing week sales 37 50-38 00 Cutter 1-2 32 00-39 00, closing 32 00-35 50 Canner and low cutter 1-2 29 00-34 00, closing sales 29 00-32 00

BULLS Yield Grade 1-2 1050-1900 lbs 42 00-46 00, closing 42 00-45 50 Yield Grade 1 1800-2150 lbs at 47 00 early, not tested late

FEEDERS Including around 1,000 at Thursday's auction Feeder steers and heifers generally steady to 1 00 lower Overall quality not as good as a week ago Supply mainly Choice and Mixed Good and Choice 550-850 lb steers and 500-750 lb heifers

FEEDER STEERS Lot Choice 418 lbs 69 25, few lots 550-565 lbs 66 25-70 00, 625-760 lbs 60 00-64 50, fleshy 700-775 lbs 51 50-54 75. Fleshy 800-960 lbs 50 75-53 50 Mixed Good and Choice 300-500 lbs 60 50-64 50 Lot standard and Good 480 lb holsteins 57 00 Few lots 725-850 lb holsteins 45 00-47 75

FEEDER HEIFERS Few lots Choice 300-400 lbs 60 25-62 25, 500-600 lbs 55 50-58 00 fleshy 650-750 lbs 48 00-50 00 Mixed Good and Choice 325-450 lbs 53 75-56 00

Market courtesy of USDA

Leesport Auction

Leesport, Pa. August 2, 1978
CATTLE 215 Supply in-

cluded 28 head feeder cattle Compared with last Wednesday's market, slaughter steers grading Good & Choice steady to 50 cents higher Slaughter cows \$1 to \$4 lower Few High Choice & Prime slaughter steers 55.50-56 35, Choice No. 2-4 975-1175 lbs 53 25-55 50, Good 49.60-54 00, few Standard 47.60-49.75 Couple Choice slaughter heifers 53.25 and 53 75, few Good 47.75-49.75, few Standard 46 00-47 35.

Utility & Commercial slaughter cows 37 00-40 50, couple to 41 75, Cutters 36.00-39 60, Canner & Low Cutter 32 00-36 00, Shells down to 30.00 Good & Choice slaughter bullocks 49 60-54 10 Yield Grade #1 1100-2000 lbs slaughter bulls 48 00-50 75 Few Good 600-700 lbs feeder steers 55 00-58.00; few Good 300-600 lbs feeder heifers 50 00-59.50.

CALVES 145 Vealers mostly \$2 to \$4 lower Few

Choice vealers 64 00-70 00, Good 58 00-63 00, few Standard & Good 110-130 lbs 54 00-59.00, 90-110 lbs 47 00-55.00, 70-85 lbs 38 00-45.00 Farm calves, holstein bulls 90-120 lbs 55.00-70 50, few holstein heifers 90-130 lbs 72.00-110 00.

HOGS 228. (plus 52 FFA HOGS). Barrows & gilts \$2 higher US No 1-2 210-230 lbs barrows & gilts 49 60-50 00, No 1-3 195-240 lbs 49.00-50 00, No 2-3 240-255

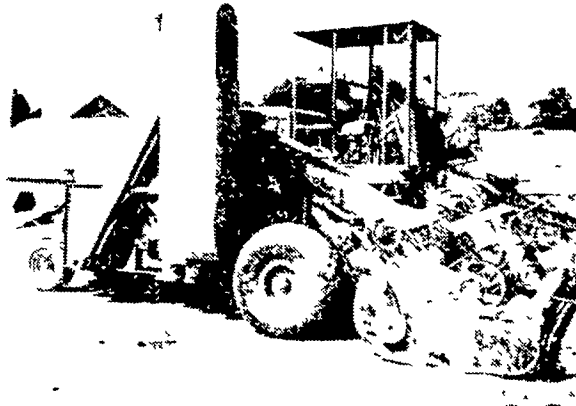
lbs. 47.00-48.75, No 1-3 160-195 lbs. 44 00-47.00. US No 1-3 350-500 lbs. sows 38.00-40 25, No 2-3 400-600 lbs 34 00-38.25 Few Boars 30.00-36 00.

FEEDER PIGS 144 ALL PRICES CWT US no 1-3 30-50 lbs. feeder pigs 89.00-110.00 cwt, Utility 20-30 lbs 62.00-99 00 cwt

SHEEP 9 Few Choice 40-80 lbs spring slaughter lambs 50 00-55.00.

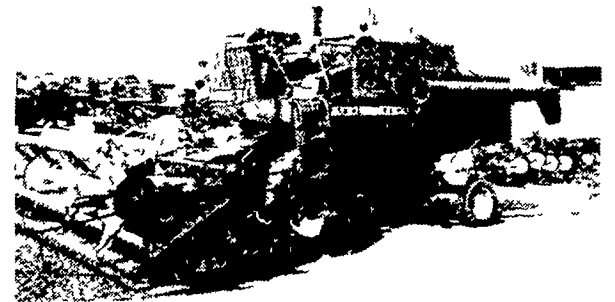
Market courtesy of PDA

WE'LL SEE YOU AT THE LEBANON AREA FAIR AUG. 7 THRU AUG. 11



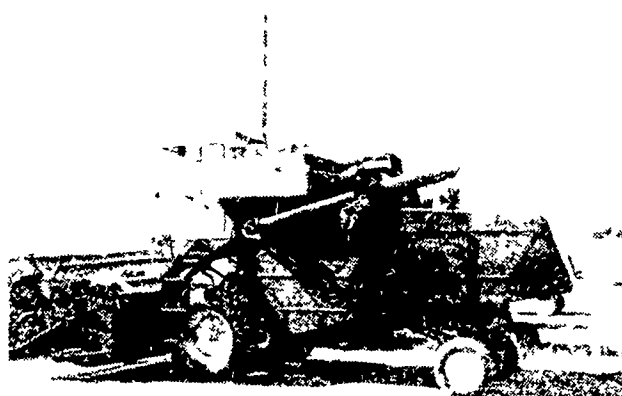
USED COMBINE

Cockshutt 427 w/power steering & 10' platform \$1,450.



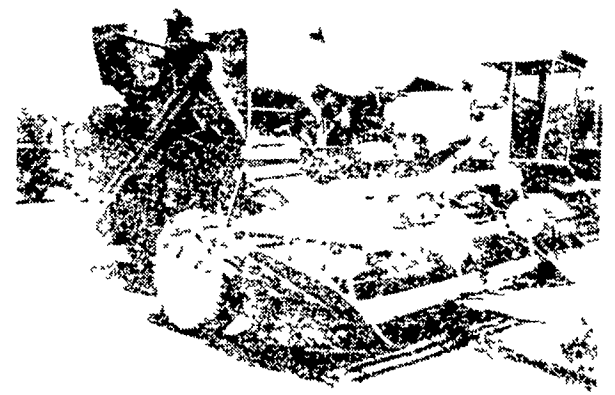
USED COMBINE

John Deere 3300 w/13 ft. Platform. \$15,700.



USED COMBINE

John Deere 55 Corn Soybean Special 12' Head \$11,700.



USED COMBINE

IH 101 w/10' Platform. \$1,250.

FAIR SPECIALS

- (1) New New Holland Model 770 Forage Harvester w/2-row narrow row crop
- (2) New New Holland Model 38 Crop Choppers

SPECIAL PRICES ON THE ABOVE MACHINERY FAIR WEEK ONLY

USED HAYBINE SPECIALS

New Holland 479 \$2 750 00
John Deere 1209 2 450 00

USED BALER SPECIALS

New Holland 67 Baler \$1 150 00
John Deere 336 w/30 eject(SOLD) 3,650 00
John Deere 14T 750 00
John Deere 14T w/ejector 700 00
John Deere 24T 950 00
NH 269 w/thrower 1 750 00
NH 273 w/54 thrower 3 250 00

USED TRACTORS

John Deere 4020 w/cab 5 150 00
John Deere 4020 Diesel PS 10 500 00
MF 15 Diesel 5 850 00

USED TILLAGE SPECIALS

John Deere 4 16 Hyd Reset Three Point \$2 250 00
Ford 11E Semi Mount Spring Reset 2 450 00
MF 720 Disc Harrow 28 Blade w/Hydraulic Cylinder, A 3 950 00
IH #7104 16 Auto Reset 2 350 00

MISCELLANEOUS

New Set 18 4x30 Snap on Duals w/New Goodyear 6 Ply Tires 1 050 00

USED COMBINE SPECIALS

AC C w 4 Row Corn Head 14 Platform \$8 750 00

USED GRAIN DRILLS

M 1135 21x Plain Grain Drill \$1 650 00
Co op 15x7 Fert Grain Drill w/ass seed attach 750 00

USED PLANTER SPECIALS

Tal 11650 John Deere 1250 6 Row Plateless \$2,350 00
11941 John Deere 494A 4 Row 650 00
11934 John Deere 494A 4 Row 1 275 00
John Deere 1240 Plat(SOLD) 2 450 00

Evergreen Tractor Co.



30 EVERGREEN RD.
LEBANON, PA 17042
PHONE (717) 272-4641