

Hog Markets

Lancaster Hogs

Saturday, July 22
890 head.
US No. 1 200-240 lb. 50.00-50.75; US No. 1 and 2 200-245 lb. 49.00-49.75; No. 3 200-250 lb. 48.50-49.00.

Monday, July 24, 1978
POGS: Barrows and gilts steady to 25 higher.
BARROWS AND GILTS: US 1-2 200-240 lb. 48.50-49.25, few 49.25-49.50; US 1 205-240 lb. 50.00-50.50; US 1-3 225-260 lb. 47.75-48.50.

Wednesday, July 26, 1978
HOGS: Barrows and gilts 25-50 lower, late sales 50-75 lower.
BARROWS AND GILTS: US 1-2 200-240 lb. 48.25-49.00, late sales 47.50-48.25; Few US 1 200-235 lb. 49.75-50.00; Few US 3 260-275 lb. 43.00-44.50.
Market courtesy of USDA.

New Holland Feeder Pig

New Holland, Pa.
Wednesday, July 26, 1978
Feeder Pigs
Today 1185
Last Wednesday 1215
Last Year 1357

TREND: Compared to last Wednesday feeder pigs firm to 4.00 higher. All pigs weighed on arrival and sold by the hundred weight.
US 1-2 25-40 lb. 104.00-120.00; 40-55 lb. 95.00-110.00; 50-65 lb. 86.00-99.00; 65-85 lb. 76.00-94.00.
US 2-3 25-40 lb. 94.00-110.00, 65 head 27-33 lb. 120.00-126.00; 40-65 lb. 83.00-101.00.
Market courtesy of USDA.

St. Louis Hogs

Thursday, July 27, 1978
HOGS: 4500 - Barrows & gilts active, 1.00 higher. US 1-2 200-240 lb. 48.75-49.00. Mixed US 1-3 230-250 lb. 48.25-48.75.

SOWS: Firm to 50 higher. US 1-3 300-500 lb. Mostly 41.50. Few lots under 50 lb. 41.00, over 500 lb. 42.00-42.50.
Market courtesy of USDA.

Peoria Hogs

Thursday, July 27, 1978
HOGS: 2500 - Barrows & gilts moderately active, opening steady to 25 higher, instances 50 higher. US 1-2 200-220 lb. 48.00-48.50, about 200 head 48.75-49.00; 220-240 lb. 47.50-48.00.

SOWS: Under 500 lb. mostly steady; over 500 lb. 75 to 1.00 lower. US 1-3 300-500 lb. 41.00-41.75, some 42.00; 500-650 lb. mostly 42.00, some 42.25.
Market courtesy of USDA.

New Holland Hogs

New Holland, Pa.
Monday, July 24, 1978
Hog Auction
Today 1340
Last Monday 1460
Last Year 1477

TREND: Barrows and gilts steady to 50 lower.
BARROWS AND GILTS: US 1-2 200-250 lb. 48.00-48.75, Few 48.75-49.00. US 1 205-240 lb. 49.25-49.85.
Market courtesy of USDA.

Indianapolis Hogs

Thursday, July 27, 1978
HOGS: 1500 - Barrows and gilts active, 50 higher. US 1-2 200-230 lb. 48.50-48.75.

SOWS: Active, steady to 25 higher. US 1-3 300-400 lb. 40.00-41.00; 400-600 lb. 41.00-42.25.
Market courtesy of USDA.

Vintage Hog

Saturday, July 22
US No. 1 200-250 lb. 48.50-49.60; US No 2 and 3 200-240 lb. 47.00-48.50; Lightweight 170-195 lb. 45.00-47.50; Heavyweight 250-275 lb. 46.50-48.50; Sows 37.00-38.50; Boars 34.00-36.50.

Wednesday, July 26
US No. 1 200-240 lb. 47.75-48.75; No. 2 and 3's 200-240 lb. 46.75-47.25; Lightweights 180-195 lb. 45.00-46.00; Sows 36.00-38.00; Boars 33.00-36.50.

Carroll's Market

Felton, Delaware
July 21, 1978
COWS: Few 39.00-40.00; Utility 37.00-38.75; Cutter 32.00-36.75.

STEERS: Prime No Test Choice 54.00-55.50; Good 52.00-53.75; Standard 47.00-51.75.

BULLS: 44.00-48.75.
VEAL CALVES: Prime No Test Choice 68.00-74.00; Good 60.00-67.75; Standard 42.00-59.00; Monkeys returning to farm-55.00-66.00.

HOGS: 200-240 lbs. No test. SOWS: 300-600 lbs. 36.00-37.25.

BOARS: 300 lbs. & up 32.50-34.00. Pigs sold between 20.00-56.00.

Lancaster Grain

Friday, July 28, 1978
These prices are made up of the average prices quoted by a number of participating area feed and grain concerns. It should be noted however, that not every dealer or broker handles each commodity. All prices are per bushel except ear corn and soybean meal which are per ton.

The average prices quoted Friday, July 28 are as follows:

	Bid+	Offered+
Ear Corn	67.00	78.50
Shelled Corn	2.52	2.75
Barley	1.70	1.93
Oats		
Local	1.30	1.55
Western	1.68	1.88
Wheat		
Soybeans		
Soybean Meal		233.00

Futures Trading

(Closing Bids as of Thursday, July 27, 1978)

	Chicago Cattle	Chicago Hogs	New York Maine Potatoes	Chicago Fresh Eggs
Aug.	52.80	48.05		
Sept.				56.10
Oct.	51.70	46.00		54.00
Nov.			5.18	57.45
Dec.	54.15	46.85		59.55
Jan.	55.00			
Feb.	55.30	45.35		
March			5.74	
April			6.15	
May			7.17	

Trend - Cattle are lower, Hogs are higher, Potatoes are higher, and Eggs are mixed.

Market Provided by Commodity Department Reynolds Securities, Inc.

Chicago Grain Futures

(Closing Bids as of Thursday, July 27, 1978)

	Corn	Wheat	Soybeans	Soybean Meal
Aug.			6.32½	163.60
Sept.	2.28½	3.15½	6.17½	163.10
Oct.				162.50
Nov.			6.04½	
Dec.	2.35	3.17¾		162.10
Jan.			6.11¾	163.10
Mar.	2.43	3.17¾	6.18	
May	2.47¾	3.15¾		

Trend - Corn is lower, Wheat is lower, Soybeans are higher, Soybean Meal is lower.

Market Provided by Commodity Department Reynolds Securities, Inc.

Belleville Auction

Belleville, Pa.
July 26, 1978

CATTLE 123. Few Good slaughter steers 47.10-50.60, Individual Good slaughter heifer at 47.75. Utility and Commercial slaughter cows 38.75-43.60, couple to 45.35, Cutters 38.00-41.60, Canner and Low Cutter 33.50-38.25, Shells down to 26.50. Yield Grade No. 1 1510 and 1520 lbs. slaughter bulls, individual's 46.35-46.75.

CALVES 217. Choice vealers 71.00-79.50, Good 55.00-66.00, Standard and Good 90-110 lb. 48.00-52.00, 70-85 lb. 37.00-45.00. Farm Calves: Holstein bulls 90-120 lb. 53.00-65.00, few to 70.00; Holstein heifers 90-150 lb. 68.00-105.00.

HOGS 162. US No. 1-2 210-225 lb. barrows and gilts 48.10-48.40, No. 1-3 195-245 lb. 46.80-48.00, lot No. 1-3 165 lb. at 45.00. Few US No. 1-3 400-600 lb. sows 36.00-38.00. Few Boars 28.50-30.50.

FEEDER PIGS 334. US No. 1-3 25-45 lb. feeder pigs 26.50-37.50 per head, No. 1-3 40-75 lb. 40.00-50.00, Utility 20-35 lb. 20.50-25.00 per head.

SHEEP 21. Good and Choice 40-80 lb. spring slaughter lambs 51.00-65.00, individual at 88.00. Few Slaughter ewes 10.50-22.50.

U.S. Inspected Livestock Slaughter

	Estimated Daily Livestock Slaughter Under Federal Inspection			
	CATTLE	CALVES	HOGS	SHEEP
Week to Date	540,000	51,000	1,050,000	81,000
Same Period Last Week	563,000	50,000	1,106,000	78,000
Same Period Last Year	578,000	64,000	1,043,000	86,000

Market courtesy of USDA.

"Hot-Shot" Products Sales & Service

S. K. SHOTZBERGER, INC.

LIVESTOCK TRANSPORTATION

Gene Zwally, President
Marvin Johns, Secy. Treasurer
P.O. Box 925, Lancaster, PA 17604
Phone: 393-4641 (day or night)

J.M. HOOBER Inc. LANCASTER STOCKYARDS

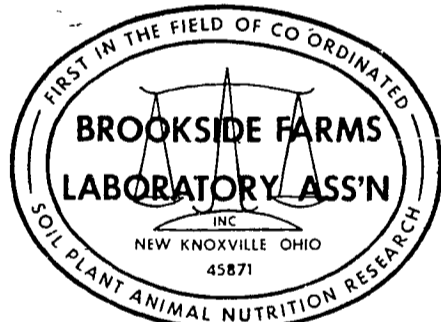
Your Livestock Broker
Serving you since 1895.

- Up-to-date market information.
- We sell slaughter cattle, fat hogs, calves, lambs, feeder pigs.
- Suppliers of feeder cattle.

NEXT FEEDER PIG SALE — AUGUST 1, 1978

Consign your livestock to J.M. Hooper Inc., where it will receive personal care and service.

Call Us:
Phone (717) 397-6191 - Home 569-2084
Small Stock Division 397-6191 - Home 626-5659



National Reputation — Local Service

CONTACT: JOHN CAMPBELL

Atglen, PA
(215) 593-5529

GARY McGEE

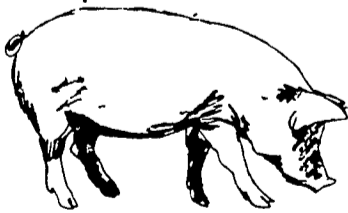
Spring Run, PA
(717) 349-7300

DAN DERR

Conowingo, MD
(301) 378-3280

ATTENTION CATTLE FEEDERS

Do you want to make buying your stockers and feeders easy. It can be very simple. Just call and give us your order. All orders filled to your exact specifications. Call us anytime. We can be very helpful.



NEXT FEEDER PIG SALE
TUESDAY, AUG. 1 — 1 P.M.



Consign all your feeder pigs to Walter M. Dunlap & Sons where they will be handled by a capable and experienced staff.

FEEDER PIGS RECEIVED FROM 6 A.M. TO 11 A.M.

WALTER M. DUNLAP & SONS

LANCASTER STOCKYARDS

Consignors can get state tags at our office, thereby saving 25¢ marketing expense

For Further Information, Call: 717-397-5136