

# Trappe Fair schedules events, festivities



A senior yearling Holstein, owned by Mary Alice Rhoads, Obelisk, is one of the 4-H dairy and baby beef animals to be shown at the Keystone Grange Fair, Saturday, July 29; Trappe. Judging starts at 12:30 p.m.; livestock parade at 4:30 p.m.

TRAPPE -- Grange Master, Matthew R. Wismer, Trappe, will preside at opening festivities of the sixth annual Keystone Grange Country Fair, on July 29 at the Collegeville - Trappe Municipal Park, W First Ave, Trappe. Rain date for the event is August 5

A schedule of events has been announced by the fair committee headed by Albert Zvarick, Collegeville, and Charles E. Wismer, Trappe. Grounds are open 11 a.m. to dusk; opening ceremonies will be at noon; chicken barbecue will be served 4:30 p.m. to 7:30 p.m.

Other events of the day are: approximately 12:30 start judging dairy and beef exhibits; and demonstrations of antique farm equipment, including threshing and grinding of grain; antique car parade 2 p.m., 3 p.m. repeat machinery demonstrations, 4:30 p.m. livestock parade of champions, 5 p.m. cow milking demonstration. There will also be a tractor pull (garden size machines),

pony rides, children's games, post hole punching and various other activities during the day

Entries for a garden show, open to the public, will be accepted 9:45 to 11 a.m. A schedule of classes can be obtained through Grange members

Collectors of small gasoline engines will again exhibit their finely tuned and turned out equipment. These and other exhibits will be open all day at the fair. Some other exhibitors will be from commercial, historical and service groups. Montg Co. Coop Extension Service will have two displays.

Farm and home crafts include blacksmithing, pottery, leather goods and many others to be demonstrated at various times.

Dairy and beef animals grown by 4-H members will be judged for fine quality during the livestock show under the direction of Delbert Keir, member of Peter Wentz Farmstead staff; and 4-H leaders Mrs. Barry Rumberger, Russell Bryant, Earl Waltmeyer and Terry Stauffer. The Montgomery Co. Dairy Princess will be on hand to award the prizes.

Kim Horrox, daughter of Mr. & Mrs. Gordon Horrox, Worcester, has been named Grange Fair Queen. She will be on hand to award various prizes to exhibitors.

Advance tickets are recommended for the chicken barbecue to be served starting at 4:30 p.m.; only a few tickets will be available at the door. Other

food, including funnel cake, ice cream, watermelon, home baked goods and needlework will also be on sale. There is a small picnic area and Lions Club pavilion.

Musical entertainment is also scheduled. Eugene Claycomb and Huntz Keyser again show prowess with the banjo, and Al Zvarick, show chairman, will do annual rendition of "Turkey In The Straw" on violin in addition to other types of music.

The horse-powered treadmill manufactured by Heebner & Sons was produced from the 1880's into

the 1920's, according to Sam Kriebel, Mainland collector of antique farm equipment and gasoline engines, at a plant standing at Main & Broad Sts. & the railroad in Lansdale. Heebners patented a level-tread design which made walking the treadmill easier for the horse — an early American energy saver.

Horse powers were also manufactured by Ruth Brothers in Lansdale and machines came in one, two and three horse sizes. A one-horse machine of Heebner's design will be used to provide belt power to thresh

grain during Kriebel's afternoon demonstrations of well-preserved antique farm equipment.



## Grain Drying Flexibility You Can Afford

Dries Corn, Wheat, Soybeans, Milo and other Sorghums, Rice, Barley, Flax, Sunflower and Rape Seed, and many other crops.

Produces High Quality, Thoroughly Dried Grain. No Mixing of Wet and Dry Grain.

Processes High Moisture Grain Easily and Efficiently.

Portable, Not Just Movable.

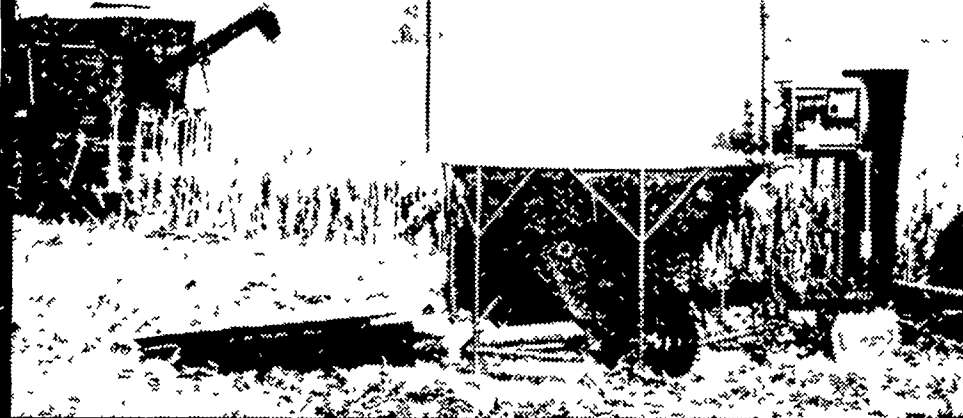
Dries at Half the Per Bushel Cost of Some Dryers . . . Fuel savings designed into every unit

Low Initial Investment Cost. It's Self-Contained

Reduces Labor Costs . . . You continue harvesting while Morige dries

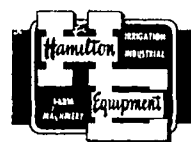
Write for literature on our 275 bu., 400 bu. or 700 bu. models.

Fully Qualified for ASCS Loan



## MORIDGE

Late plantings may increase the demand for dryers in '78. Investigate your options now — Write or call.....



Distributed by  
**HAMILTON EQUIPMENT, INC.**  
P.O. Box 478 / 567 S. Reading Road  
Ephrata, Pennsylvania 17522  
Telephone (717) 733-7951

See your nearest Morige dealer listed below.

- |   |  |  |
|---|--|--|
| <b>PENNSYLVANIA</b>   | <b>MERCER</b>  | <b>RINGOES</b>                             |
| <b>BENTON</b><br>Badger Farm Equipment                        | Ralph Kyle Farm Equipment                            | D & R Equipment, Inc                       |
| <b>CARLISLE</b><br>Peterman Farm Equipment                    | <b>MILL HALL</b><br>Dunkle & Greib                   | <b>SHILOH</b><br>Robert G. Hampton, Sr     |
| <b>CENTRE HALL</b><br>Dunkle & Greib                          | <b>MUNCY</b><br>Rob Bubb                             | <b>WASHINGTON</b><br>Frank Rymon & Sons    |
| <b>CHESTER SPRINGS</b><br>Nevin N. Myer & Sons, Inc           | <b>NEW BERLINVILLE</b><br>Erb & Henry Equipment, Inc | <b>MARYLAND</b>                            |
| <b>COLUMBIA CROSS ROADS</b><br>Columbia Cross Roads Equipment | <b>NEW FREEDOM</b><br>S S Spicer                     | <b>GREAT MILLS</b><br>Coppage Implement Co |
| <b>DOYLESTOWN</b><br>Paul W. Hinstead Co., Inc                | <b>PITMAN</b><br>Marlin W. Schreffler                | <b>LaPLATA</b><br>Gardiner Equipment Co    |
| <b>GREENCASTLE</b><br>Walck's Circle Products                 | <b>QUARRYVILLE</b><br>Grumelt Farm Service           | <b>VIRGINIA</b>                            |
| <b>HONSDALE</b><br>Marshall Machinery                         | <b>THORNDALE</b><br>Lamb Farm Machinery              | <b>CHESAPEAKE</b><br>Gray & Curling        |
| <b>JERSEY SHORE</b><br>Thomas L. Dunlap                       | <b>NEW JERSEY</b>                                    | <b>Equipment Corp</b>                      |
| <b>LITITZ</b><br>Binkley & Hurst Brothers, Inc                | <b>COLUMBUS</b><br>Reed Brothers                     | <b>MT HOLLY</b><br>Murphy Equipment, Inc   |
| <b>McALISTERVILLE</b><br>Campbell Sales & Service, Inc        | <b>HACKETTSTOWN</b><br>Doncheski Brothers, Inc       | <b>WEST VIRGINIA</b>                       |
|   | <b>HIGHTSTOWN</b><br>Hights Farm Equipment Co., Inc  | <b>LEON</b><br>Keefer's Service Center     |

### KEEP THE HEAT where it belongs all year long...

**Enjoy Cool Comfort**

**YOU DON'T** have to remove old worn out insulation cover with Mono-Therm!

**YOU DON'T** ever have to insulate again — Mono-Therm will never settle or pack!

**Call For Free Estimate**

**MONO-THERM INSULATION IS BETTER 6 WAYS!**

- FIRE RETARDANT Withstands high heat and flame
- PEST RESISTANT Offers no home nor food for pests
- NON IRRITATING Harmless to humans and pets
- SUPERIOR INSULATION K factor less than .26 the lower the K factor the better the insulation
- SAVE UP TO 30% Mono-Therm cuts cooling and heating costs by as much as 30%
- UNDERWRITERS LABORATORIES INC listed

**BOOTH INSULATION**

1167 Snapper Dam Rd., Landisville, PA 17538  
Phone (717) 898-2760

*It can pay for itself in the FIRST YEAR!*

**PURINA**

**HORSE MEETING**

To be held  
**THURS., JULY 27**  
8:00-9:15 P.M.  
**PICKERING VALLEY FEED & FARM STORE**

Rt 113 & Gordon Drive  
Lionville, PA 19353  
For reservations  
Call 215-363-8810

- REFRESHMENTS
- DOOR PRIZES

See Purina Ad Cover Page  
This issue for meeting agenda