

# Heifers stolen

SEVEN VALLEYS — Six heifers are reported stolen from Bupplynn Farms, near here, owned by Leroy and Joyce Bupp.

The missing animals are all registered Holsteins, ranging in weight from 600 to 1000 pounds. None were bred. Each animal has a hole in the bottom of her left ear for plastic tags and each was identified with metal tags in the top right ear.

"Of special concern to us is our daughter's 4-H animal," says Mrs. Bupp, describing the heifer as being all black with a white star on the top of her forehead and having a white switch and white feet. An unusual identifying mark would be a white line across her nose that resulted from a show halter burn.

According to Mrs. Bupp, strange tire marks have been discovered in the area from which the heifers were

# Rural crime

(Continued from Page 1)

"The only thing that can be done, is that the farmer just accepts it," Dobrosky added sympathetically.

He discussed cases that he had heard of in recent months.

"Just the other day, a farmer had all the tires slashed on a piece of equipment left out in the field overnight," he said.

"It happens, and it happens a lot," he added. "If I called

allegedly taken. None of the missing animals have been seen by their owners since July 1.

Anyone with information about the case is asked to contact the Bupps at 717-428-1865. "We are willing to buy back the 4-H heifer, if it went through the auction or something," Mrs. Bupp added.

a dozen farmers, chances are that about ten of them would be able to report a crime like tires slashed, broken windows, parts stolen out of a tractor, that sort of thing."

Dobrosky related that most farm crime is vandalism. Few things are actually stolen outright, and there are fairly few cases of stolen livestock, based on his experiences.

Even though stolen cattle is rare, Dobrosky can remember a recent case when a farmer had cattle in the field overnight and in the morning he found one shot and quartered, the meat stolen.

"It doesn't happen too often, but it does," he said. "Why I even recall hearing that someone stole a 4-H steer from some kid."

The crimes on the farms might include an occasional stolen cow, and a dead steer, but more often than not, it's the valuable property and equipment on the farm that is hit by the rural crime.

Lancaster County State Police Barracks report that farm crime is still fairly low for the most part, but incidences of broken windows and ruined mailboxes are very frequent.

These crimes are generally non-professional, the kinds of things that youngsters are likely to do. Every once in a while, though, a particular part of a piece of equipment is stolen, removed carefully and with precision.

In most cases crimes like these are never solved. The

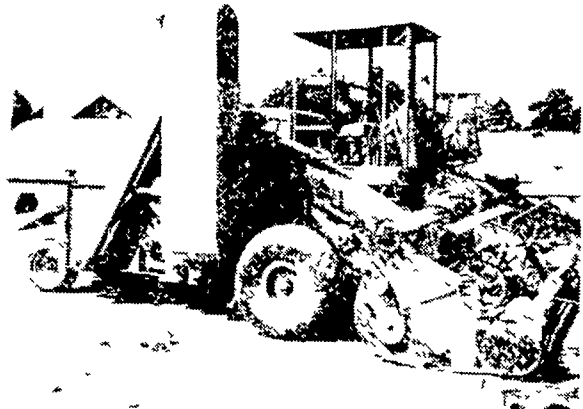
(Turn to Page 18)

## Carlisle Auction

(Continued from Page 16)

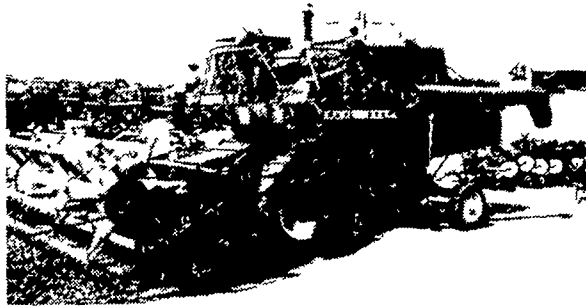
49.25, No. 1-3 230-255 lbs. No. 1-3 25-40 lbs. feeder pigs  
 44.50-48.00, No. 2-3 200-300 lbs. 15.00-29.00 per head, No. 1-3  
 41.50-45.00. US No. 1-3 35-60 lbs 33.00-50.00 per  
 300-550 lbs. sows 35.50-39.50, head.  
 No. 2-3 300-600 lbs. 30.00- SHEEP 22. Good spring  
 34.50. Boars 32.50-33.50. slaughter lambs 46.50-50.50.  
 FEEDER PIGS 127. US Market courtesy of USDA.

*We're Clearing 'Em Out—  
Come In—Save!*



### USED COMBINE

Cockshutt 427 w/power steering & 10' platform ..... **\$1,450.**



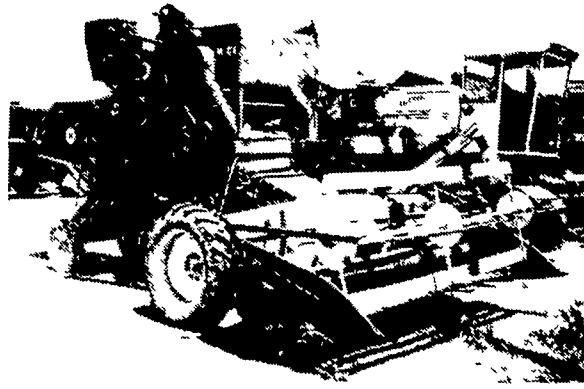
### USED COMBINE

John Deere 3300 w/13 ft. Platform ..... **\$15,700.**



### USED COMBINE

John Deere 55 Corn Soybean Special 12' Head ..... **\$11,700.**



### USED COMBINE

IH 101 w/10' Platform ..... **\$1,250.**

### USED HAYBINE SPECIALS

New Holland 479 \$2,750.00  
 John Deere 1209 2,450.00

### USED BALER SPECIALS

New Holland 67 Baler \$1,150.00  
 New Holland 69 B(SOLD) 1,475.00  
 John Deere 14T w/E(SOLD) 950.00  
 John Deere(SOLD) 500.00  
 John Deere 336 w/30 ejector 3,650.00  
 John Deere 14T 750.00  
 John Deere 14T w/ejector 850.00  
 John Deere 24T 950.00

### USED TRACTORS

John Deere 3020 w/cab 5,150.00  
 John Deere 4020 Diesel, PS 10,500.00  
 MF 175 Diesel 5,850.00

### USED TILLAGE SPECIALS

John Deere 4-16" Hyd Reset Three Point \$2,250.00  
 Ford 4-18" Semi-Mount Spring Reset 2,450.00  
 MF 720 Disk Harrow 28 Blade w/Hydraulic 3,950.00  
 Cylinder A-1 2,350.00  
 IH #710 4-16" Auto Reset 2,350.00  
 John Deere 2-16" Roll Over 1,800.00

### USED PLANTER SPECIALS

Tag 11650 John Deere 1250 6 Row Plateless \$2,350.00  
 11953 John Deere 494A - 4 Row 750.00  
 11941 John Deere 494A 4 Row 650.00  
 11934 John Deere 494A - 4 Row 1,275.00  
 John Deere 1240 Plateless 2,450.00

**FLASH! FLASH! FLASH!**

This week a 15% Discount will be given on the above planters if you mentioned you saw the ad in Lancaster Farming.

### MISCELLANEOUS

John Deere 1210(SOLD) bu Grain Cart (LIKE NEW) \$3,500.00  
 New Set 18 4x30 Snap on Duals w/New Goodyear 6 Ply Tires 1,050.00

### USED COMBINE SPECIALS

AC C w/4 Row Corn Head 14" Platform \$8,750.00  
 Case 600 w/cab(SOLD) row corn head & grain platform 2,500

### USED GRAIN DRILLS

MF 1138 21x7 Plain Grain Drill \$1,650.00  
 Co-op 15x7 Fert Grain Drill w/grass seed attach 750.00

**(1) NEW New Holland 273 Balers w/#54 Thrower, Super Sweep Pickup & Long Tongue, High Flotation Tires, No Trade \$4,495.00**

## Evergreen Tractor Co.

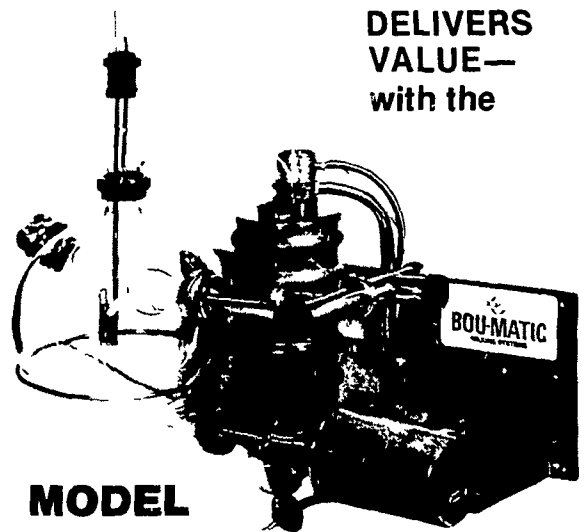


30 EVERGREEN RD.  
 LEBANON, PA 17042  
 PHONE (717) 272-4641



## BOU-MATIC MILKING SYSTEMS

BOU-MATIC DELIVERS VALUE— with the



### MODEL 77 RECEIVER PANEL

- INSTALLS QUICKLY—BECAUSE IT'S FACTORY ASSEMBLED.
- FEATURES A STAINLESS-STEEL BACK PANEL—HEAVY GAUGE.
- HAS FLOAT-OPERATED LIQUID LEVEL CONTROL—FOR LONG-LASTING, SANITARY SERVICE.
- HANDLES GREAT VARIETY OF MILKLINE CONFIGURATIONS—WITH THE STAINLESS ELBOW AND TEES INCLUDED.
- COMES COMPLETE WITH MASTER CONTROL PANEL, AIR INJECTOR, RUBBER WASH PLUGS, AND MORE.

If you're interested in VALUE, buy BOU-MATIC

LLOYD E. KREIDER CO.  
 Cochranville, PA  
 (215) 932-4700

CARL SHIRK  
 Lebanon, PA  
 (717) 274-1436

LANDIS FARMSTEAD AUTOMATION  
 Milton, PA  
 (717) 437-2375

JONES DAIRY SERVICE  
 Lester Jones, Jr.  
 Medford, NJ  
 (609) 267-5246

CLUGSTON IMPLEMENT  
 Chambersburg, PA  
 (717) 263-4103

SHENKS FARM SERVICE  
 Lititz, PA  
 (717) 626-1151