

York County DHIA

(Continued from Page 93)

Elvin G. Molson							
16	3	8-3	304	17,133	3.7	630	
1	3	6-1	279	15,090	3.8	573	
68	3	2-3	276	12,805	3.9	500	
Larry J. Moyer							
631	3	8-5	276	14,408	3.6	513	
670	3	7-7	305	14,138	4.0	564	
John D. Adams							
68	3	2-1	305	12,066	4.2	509	
Honeycrest Fm							
Farrya	2	3-8	305	12,037	4.9	585	
Lass	2	4-1	305	12,959	4.9	639	
Lilly	2	4-9	303	12,427	4.6	566	
Rwinkie	2	2-9	305	15,194	3.9	585	
Tootsie	2	4-9	303	14,464	4.4	639	
Koko	2	2-3	305	12,497	4.2	525	
Mervin W. Hertzler							
Calliop	2	3-3	305	12,629	4.5	574	
Joyce	2	6-1	305	12,748	4.3	554	

Del. Field Day Aug. 4

NEWARK, Del. — Farmers will have a chance to look at current research and Extension efforts into improving the production of corn and soybeans at the upcoming Field Day at the University of Delaware's College of Agricultural Sciences. The event will be held Friday morning, August 4, from 9:30 a.m. to noon at the University's experimental farm on Route 896 in Newark.

The Field Day will consist of wagon tours of field demonstration plots, and will emphasize some of the Delaware Agricultural Experiment Station's most recent and innovative research efforts on behalf of corn, soybean, and turfgrass production in the state. Researchers and Extension personnel will be on hand to discuss their work as well as to lead the tours of the experimental plots.

ISAAC BRUBAKER COMPLETE Milking Herd & Bred Heifer DISPERSAL

And additional selections by Gordon Fritz
THURSDAY, JULY 27

8:00 P.M. Smoketown, Pa.

At Smoketown Quality Dairy Sales located 5 miles East of Lancaster, and 5 miles West of Intercourse on Rt. 340 in Village of Smoketown.

24 Registered Holsteins

19 Cows - 5 Bred Heifers

This is a Fall herd of Cows. Many Freshening July till December 26 years of continuous DHIA testing (several times near top of Lancaster County) Not on test last several years. Animals cert. and will be interstate tested. Cows milking up to 96 lbs per day & milked at regular times.

Many Pedigrees

Trace To These Outstanding Sires

Osbornale Ivanhoe (EX-GM) Lauxmont Admiral Lucifer (VG-87-GM)

Bruk-Vil Patsy Rose Lucifer 202,748 Milk 6643 Fat lifetime

Many 100,000 lb. cows developed in this herd including:

One of Lucifer's seven official 200,000 lb daughters Her three gr'dtrs sell including an 8-year-old Dividend Performer with 15,588 3.4% 535 at 2y and her maternal sister by Bonus Their dam is a GP-83 Ivanhoe with 123,981 Milk 4930 Fat and 9-5 18,864 4.0% 747 in 305d Also a Hilltop Apollo Ivanhoe gr'dtr of Patsy Rose

Burk-Vil Belinda Lucifer 174,617 Milk 5879 Fat lifetime

Her daughter by Eagle Point Designs Bonus sells along with her gr'dtr by Harrisburg Gay Ideal

SIRES REPRESENTED: Harrisburg Gay Ideal-5, Penstate Ivanhoe Star-3, Hilltop Apollo Ivanhoe 2, Whittier Farms Apollo Rocket-2, and Romandale Dividend Performer-2

Service Sires from Atlantic

Milking equipment for sale privately ★ Sale will start promptly at 8 00 P M daylight savings time

Don't miss this opportunity to purchase strong pedigreed cows with several generations of top production! If you want milk, foundation & blood lines, don't miss this sale.

Catalogs at ring side.

Owner

ISAAC BRUBAKER
RD 6, Lititz, Pa 17543
Ph 717-665-5494

Sale Manager
GORDON AND RON FRITZ
Smoketown Quality Dairy Sales
Ph. 717-393-0930

Leonard W Greek							
Luscious	3	2-9	305	14,638	4.3	625	
Gary W. Thoman							
18	3	6-8	280	13,499	3.8	517	
9	3	3-5	305	18,396	3.0	561	
B. Robert Charles							
Belle	3	8-9	275	17,157	3.4	577	
Herta	3	6-7	291	15,499	4.2	644	
Edwin L. Calhoun							
20	3	2-0	305	15,305	3.5	543	
McRal Dairy Farm							
Bess	3	9-0	288	14,930	3.6	542	
64	3	6-3	305	15,120	3.7	563	
218	3	5-0	305	14,344	3.5	502	

340	3	4-4	305	17,162	4.6	793	
344	3	4-0	305	13,507	3.8	515	
345	3	3-10	305	13,308	4.3	568	
Galawn Farms							
Susie	3	7-2	305	23,536	3.8	902	
Janice	3	5-6	305	18,302	3.7	672	
Peggy	3	5-4	305	23,992	3.6	869	
Pepper	3	5-6	305	18,375	4.0	735	
Bonnie	3	2-11	304	14,705	4.1	601	
Julie	3	2-5	303	15,951	4.3	687	

JONAS D. KREISER PUBLIC SALE

TRACTORS, FARM IMPLEMENTS &
SMALL GOODS

SATURDAY, JULY 29, 1978

Sale to be held on the Daniel Kreiser Place 1 mile South of Bardnersville or 1 mile off Route 72, take the Service Road on the North side of 78 in Union Twp., Lebanon Co., Pa.

Farmall Super M tractor w/remote control, Farm. H tractor w/remote control, 1901 Inter. - loader w/snow bucket, for H or M tractor, 1964 Chevrolet ½ ton truck in good condition, International hay binder like new, Steel - gravity grain bin on wagon, International - baler w/No 10 bale thrower, 2 barrel sprayer, 3 bottom 16 in plow w/remote control, 2 bottom - 16 in plow, 3 section spring harrow, 9 ft. - disk on rubber, 10 ft. cultipacker, Smoker - bale elevator w/2 phase motor, International - hay rake on rubber, Grove rubber tire wagon - w/hay rack and sides, 2 row mounted - corn planter, cultivator, PTO grass - seeder new, air compressor w/motor 3 section spike harrow, new hydraulic cylinder, coal heatrola, tires, Snapper rototiller, 2 small chicken pens, hog feeders, hog troughs, bath tub, used lumber, cement blocks, fire bricks, tractor chains, electric meat slicer, refrigerator, cabinet, dolls, cast iron pans, wheel weights, rolls of tin, 3 bottom plow as is, beam scale, platform - scale, 3 - 55 gal gas drums, oil drums Fence posts, bin of oats, butcher knives, chains, nuts, bolts

5 acres of oats on the field. 10 acres - corn on the field, and lots of small items not mentioned.

Refreshments on the Premises

Sale at 10 A.M. Sharp

Conditions by

JONAS D. KREISER

John Breidegam, Auct.

George Lerch & Curtis Swope, Clerks

PUBLIC SALE OF REAL ESTATE, ANTIQUES, HOUSEHOLD GOODS, ORIENTAL RUGS & DOLLS THURSDAY, JULY 27

At 10:00 A.M.

Located at 243 Elm Street, Lancaster, Pa. (between Chestnut & Walnut) (1 block East of St. Joseph's Hosp.)

2½ Story, 6 room & full bath brick row home.

Lot Size: 16' frontage by 105' depth more or less

Property open for inspection:

Sat's. July 15 & 22 from 1 till 2.

Real Estate to be sold at 2:00 P.M.

Oriental Rugs: Kashmir by Couristan (71" by 35") & Karastan (4' by 27"). Quality gas stove, Norge refrig., Norge wringer washer, Hoover upright & other vacuums, Singer sew. mach. in walnut cabinet. Fine Baby grand piano w/bench, Fine walnut vic roll top desk, walnut vic. marble top table, Empire slant top desk, 2 pine blanket chests, 2 Martha Washington sew stands., mahg 7 pc. bedroom suite, maple 8 pc. bedroom suite w/twin beds. Mahg., walnut, oak, maple, uph. wooden & metal furniture. Mirrors & picture frames Brass, marble & china lamps Iron, agate, wooden, & brass articles. Dolls, doll furniture & clothing. Lots of books. Zamara & #20 dec ironstone, flow blue, soft paste, Heisey, Austria, German, cut glass, pressed, depression, Fiesta, Japan & other glassware & china Household articles

Food served.

Sale by

CORA H. DESSAU

Harris C. Arnold Atty.

Howard Shaub Auctioneer 464-3541

and Roy C. Probst 464-3190

PUBLIC SALE

VALUABLE REAL ESTATE
1.222 ACRE

REAL ESTATE CONSISTS OF
3 LARGE BUILDINGS

PROPERTY HAS GOOD BUSINESS POTENTIAL

FRIDAY EVENING, JULY 28, 1978

At 7:00 P.M.

Located 15 mile South of Lancaster along Rt. 222 or 1 mile North of Quarryville, Pa.



INSPECTION OF PROPERTY

CALL FOR APPOINTMENT 717-786-4293

THE HOUSE: 2 yrs. old, 2 story brick and aluminum siding, 3400 sq ft of living space. Kitchen & dining combined w/Whirlpool range, living room w/fireplace, office, full bath, wall to wall carpet, laundry & furnace room combined, hot water heat. Second floor has 4 bedrooms, unfurnished bath, closets in everyroom, walk in closet. This house could be made into an apartment. Nice lawn, shrubbery, well water Ready for boro sewer hook up. Cable TV hook up

Garage 38' x 72' x 16' high new block building with 2736 sq ft. floor space, hot air heating system

Cement block building with 3200 sq ft floor space, hot air heating system also connected is 980 sq ft floor space which is gas heated.

All heating systems are in excellent condition

Terms 10% down possession in 60 days

Sale By

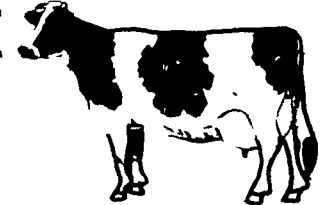
KENNETH & BARBARA SWAYNE

Attorney Ralph Eby

Aucts Lloyd H Kreider

& Randal V Kline

TWO COMPLETE HERD DISPERSALS



THURSDAY, JULY 27

8:00 P.M. Sharp

Located Smoketown Quality Dairy Sales, 5 miles East of Lancaster, 5 miles West of Intercourse, Rt. 340 in Smoketown, Pa.

Two complete herd dispersals out of New England States. One herd is averaging over 50 lbs. per day. These cows are on test. Herd average is 13,855 M, 510 F There are six Registered cows. Sires include - Glenn - Lu - Knoll Astro Glenn, Born 1974. Andy born 1972 Marge, born 1973. Tidy Burke Transmitter born 1972 in 366 days-21,527 M, 719 F. Now fresh and bred back, milking 90 lbs. per day. Milk records will be announced night of sale Also one herd of cows from New England. These cows are grades fresh & springing Cows due this summer & fall Also 10 hand picked cows & 1st calf heifers from one herd One top Brown Swiss Fresh cow & one Red-White heifer fresh Two open Heifers ready to breed.

Also Selling - Two Registered Holstein Bulls, big and strong, ready for Service - (1) His sire a Round Oak Rag Apple Elevation and Granddam was a Kingpin with milk records to 27,247 and 902 fat. (1) His Sire a Minnechaug Glenafton Hercules, and his Dam was a Hawn Crest Ivanhoe.

4 Registered Holstein Cows selling as follows - 1. born 7/26/75, Sired by Willards Monark bred to the Willow Farm Rockman Ivanhoe 2. born 3/20/73, sired by Saxjac Sherry Rambler Robbie bred to Haneves-Aur Tryli Threat-Red. 3 born 3/27/72 sired by Waybrook Sir Winston bred to Woodbine-Chief Mohawk 4 born 4/9/73 sired by Seiling Rockman and bred to Woodbine-Chief Mohawk.

If you need cows that milk 50 to 100 lbs. per day don't miss this sale. If you want to up your DHIA records these are the cows to buy

Cows milked at regular times, pregnancy checked.

Cash or good check night of sale.

Sale Managed by -

GORDON & RON FRITZ

717-393-0930

Carl Diller - Auctioneer

Henry Kettering - Pedigrees

Lunch by Bird-in-Hand Aux.