



# Livestock market and auction news

## SPECIAL NOTICE

### VINTAGE SALE STABLE, INC.

Box 100, Rt. 30  
Paradise, Pa.  
12:30 P.M.

Needs more hay and straw, ear corn and fodder for each Thursday Auction.

Our prices are as good as any sale in the East.

Commission rate - \$1.50 per ton.

For information, contact:

**L. ROBERT FRAME**

Auctioneer  
717-442-4181

## St. Louis Cattle

National Stockyards  
July 13, 1978

Receipts this week 7,100; week ago 3,200; year ago 8,000 compared to the previous weeks close, slaughter steers 1.50-2.00 lower. Slaughter heifers 1.00-1.50, instances 2.00 lower. Cows closing generally steady after an early advance was offset by a late decline. Bulls 1.00 to mostly 2.00 higher. Slaughter supply mainly choice 2-4 1025-1175 lb. steers, around 35 per cent heifers and 15 per cent cows.

**SLAUGHTER STEERS:** Mixed Choice and Prime 2-4 1050-1250 lbs. 53.50-55.00, load 1250 lbs. early at 55.25, closing sales 53.50-54.25. Choice 2-4 950-1250 lbs. 52.00-54.00, closing 52.00-53.50.

**Mixed Good and Choice 2-4** 900-1200 lbs. 50.50-52.75. **Mixed Good and Choice 2-3** 1100-1325 lb. Holsteins 48.50-50.00, closing 48.50-49.00. **Good 2-3** 900-1150 lbs. 48.00-50.50. **Standard to Good 2-3** 1050-1200 lb. Holsteins 48.00-48.50.

**SLAUGHTER HEIFERS:** **Mixed Choice and Prime 2-4** 875-1025 lbs. 51.00-52.00, most closing sales 51.00-51.50. **Choice 2-4** 800-1050 lbs. 48.00-51.00. **Mixed Good and Choice 2-3** 700-975 lbs. 47.00-49.00. **Good 2-3** 700-950 lbs. 45.00-47.50.

**COWS:** **Utility & Commercial 2-4** 37.00-41.00. **Boning Utility 1-2** 40.00-42.00. **Cutter 1-2** 35.00-40.00. **Canner and Low Cutter 1-2** 32.00-36.00.

**BULLS:** **Yield Grade 1-2** 1050-1800 lbs. 42.00-46.00. **Yield Grade 1** 1400-2100 lbs. 47.00.

**FEEDERS:** Including around 700 at regular Thursday's auction. Feeder steers and heifers unevenly 2.00-4.00 higher. Demand good for moderate supply. Receipts minly Choice and Mixed Good and Choice 400-850 lb. steers and 400-650 lb. heifers.

**FEEDER STEERS:** **Choice 400-500 lbs.** 63.25-69.00; **500-600 lbs.** 62.25-67.00; **650-800 lbs.** 55.75-59.25; **800-850 lbs.** 54.00-57.50, few lots 900-925 lbs. 52.25-55.50. **Mixed Good and Choice 400-600 lbs.** 57.00-60.25.

**FEEDER HEIFERS:** **Choice 300-500 lbs.** 58.25-59.50; **500-650 lbs.** 56.00-57.00; few lots 725-800 lbs. 50.25-55.00. **Mixed Good and Choice 325-600 lbs.** 52.25-58.25. **Few Good 450-600 lbs.** 50.00-53.75.

## New Holland Dairy

New Holland Sales Stables  
Wednesday, July 12

Reported receipts of 96 cows and 60 heifers. Market stronger than last week's market.

Load of Pa. fresh 710-975; load of Wisconsin fresh 585-1020; load of Pa. fresh 800-980; two loads of N.Y., purebred and grade, fresh 810-1975, springers 650-1150; load of Pa. fresh 730-1000; local cows 550-1100; springing heifers, grades 525-810, purebreds 750-1040; open heifers 325-485.

**CHEESE**  
A FAVORITE DAIRY FOOD

## ANNOUNCING

# QUEEN ROAD REFRIGERATION

IS NOW AN AUTHORIZED DISTRIBUTOR FOR



## "THE DIESEL WITH A DIFFERENCE"

Cuts your power costs because it's way ahead of its time on all points.

AVCO-VM diesel engines are world-proven money-savers. They deliver maximum power efficiency immediately, under any sudden load or climate variation. Their higher power to weight ratios mean NO REDUCTION IN HORSEPOWER to qualify for pollution standards.

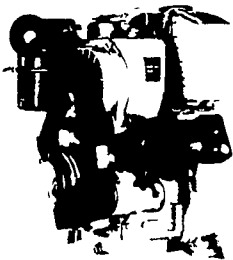
They're stingy on fuel, too. Many users report fuel consumption CUT IN HALF — and more — compared with gasoline engines. In some installations, our diesels are delivering more than

TWICE the hours of operation per gallon of fuel.

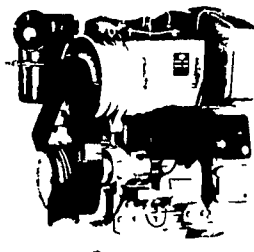
Faultless performance is the norm, rather than the exception. A choice of 27 premium quality air-cooled Avco-VM's (5 to 670-hp) means there's one that's right for your application.

Modular, unitized construction means fewer specialized parts, lower weight per hp, lower maintenance costs, 70% parts interchangeability — and they'll fit the tightest space.

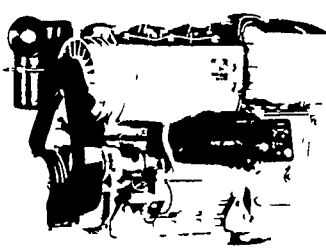
### 1050 SU SERIES



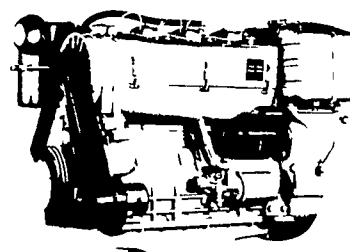
2800 R.P.M.  
22 SAE HP  
20 DIN HP



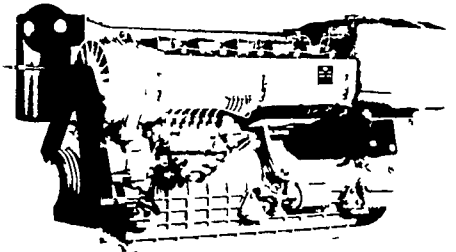
2800 R.P.M.  
44 SAE HP  
40 DIN HP



2800 R.P.M.  
66 SAE HP  
60 DIN HP

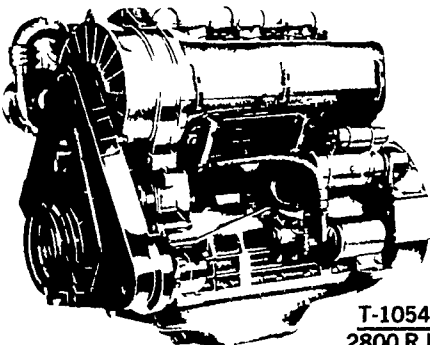


2800 R.P.M.  
88 SAE HP  
80 DIN HP

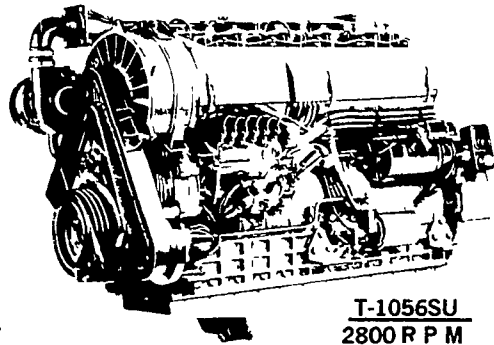


2800 R.P.M.  
132 SAE HP  
120 DIN HP

### T 1050 SU SERIES

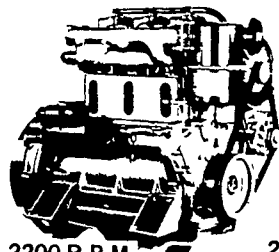


T-1054SU  
2800 R.P.M.  
106 SAE HP  
98 DIN HP

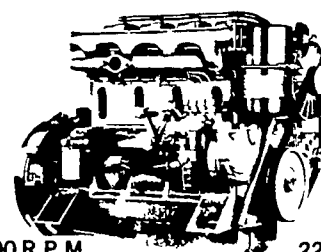


T-1056SU  
2800 R.P.M.  
160 SAE HP  
147 DIN HP

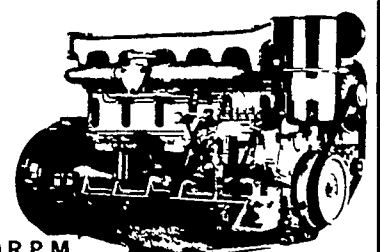
### DAN SERIES



2200 R.P.M.  
79 SAE HP  
72 DIN HP



2200 R.P.M.  
105 SAE HP  
96 DIN HP



2200 R.P.M.  
155 SAE HP  
144 DIN HP

THE "RIGHT FROM THE START" DIESEL ENGINE LINE FOR FAULTLESS PERFORMANCE.

## QUEEN ROAD REFRIGERATION

BOX 67, INTERCOURSE, PA. 17534

PHONE: 717-768-9006

AFTER 5 PM — JOHN D. WEAVER 768-8355

Gid Dienner 768-8521

Sam Stoltzfus 768-3594

Or Answering Service 354-4374

24 HOUR SERVICE