

Livestock market and auction news

Lebanon Valley Auction

Fredericksburg, Pa.
June 27, 1978

CATTLE 210. Compared with last Tuesday's market, slaughter steers \$4-\$5 lower. Slaughter cows mostly 50 cents to \$1 lower. Few High Choice and Prime 3-4, 1105-1250 lbs. slaughter steers 52.85-54.10, Choice 2-4, 1020-1270 lbs. 50.25-53.50, Good 47.00-51.10, few Standard 45.00-50.00, few Utility & Low Standard 39.75-42.25. Two High Choice & Prime

slaughter heifers 52.75 and 52.85, Choice 49.00-50.35, few Good 46.25-49.00, few Utility and Standard 39.25-42.25. Utility and Commercial slaughter cows 39.00-41.50, few 42.75, Cutters 36.75-38.85, few 39.85, Canner and Low Cutter 34.50-36.60, few down to 30.00. Few Good slaughter bullocks 47.00-48.60, Standard 44.25-46.60, few Utility and Low Standard 39.00-43.85. Yield Grade No. 1, 1175-2240 lbs. slaughter bulls 45.50-49.25.

CALVES 140. Vealers grading Standard and Good unevenly steady. One Prime

vealers at 80.00, few Choice 65.00-71.00, few Good 64.50-68.50, Standard and Good 90-110 lbs. 60.00-64.00, few to 66.00, 70-90 lbs. 50.00-58.50, few Utility 50-70 lbs. 41.00-51.00. Farm Calves: Holstein bulls 90-120 lbs. 61.00-76.00, one at 80.00; Holstein heifers 90-115 lbs. 67.00-75.00, few to 89.50; Few Beef cross bulls and heifers 70-105 lbs. 60.00-63.50.

HOGS 302. Barrows and gilts \$1.50-\$2 lower. US No. 1-2 200-260 lbs. barrows and gilts 48.75-49.50, few 49.75, No. 1-3 195-245 lbs. 48.10-48.75, No. 2-3 230-265 lbs. 46.00-48.10, No. 2-3 260-280 lbs. 44.60-46.00. Few US No. 1-3 275-490 lbs. sows 41.25-42.75, few No. 2-3 320-690 lbs. 34.00-38.25. Few Boars 35.75-38.75.

FEEDER PIGS 59. US No. 1-3 35-50 lbs. feeder pigs 67.00-96.00 per hundredweight, No. 1-3 50-110 lbs. 59.00-64.00 CWT.

SHEEP 41. Choice 70-115 lbs. spring slaughter lambs 50.00-60.50, few 72.00-76.50, few 35-60 lbs. 50.00-55.00. Slaughter ewes 16.00-21.00.

Des Moines Carlot

June 28, 1978

STEER BEEF

13 Loads

Choice 3: 600-800 lbs. 80.50, 1.50 lower than Monday.

Choice 3: 700-900 lbs. 80.50-82.00, late 80.50, 1.50 lower packer-packer trade.

Choice 2: 600-800 lbs. 81.50. Choice 3: 550-650 lbs. 84.00, trimmed and selected. Choice 4: 700-900 lbs. 75.75. Good 2-3: 600-800 lbs. 77.25. Choice 3: 550-700 lbs. 79.50, late yesterday.

HEIFER BEEF

15 Loads

Choice 3: 500-700 lbs. 78.75. Good 2-3 500-700 lbs. 74.75

COW BEEF

2 Loads

UTILITY (BNG): 2-3 70.00, steady.

BONELESS PROCESSING BEEF: 90 per cent chemical lean (fresh) 98.00; 85 per cent chemical lean (fresh) 89.00.

PRIMAL BEEF CUTS

Choice 3

4 Loads

ARM CHUCKS: 75-120 lbs. 64.75 load.

ROUNDS (Steer) 70-90 lbs. 83.50-86.50.

BEEF TRIMMINGS: 50 per cent lean (Fresh) 59.00-59.50.

BEEF TRIMMINGS: 50 per cent lean (Frozen) 57.00.

GOOD PRIMAL

BEEF CUTS

1 Load

ARM CHUCKS: 63.50. Compared to Wednesday's close: Fresh pork cut trade slow to moderate late. Offerings limited; demand light to moderate. Loin unevenly steady to 1.50 higher; skinned hams 17-26 lbs. 50.75 higher. SDLS Bellies not well established. Picnics, butts and spareribs not established. Sales

reported on 44 loads of pork items.

FRESH PORK CUTS

LOINS: 14-17 lbs. 97.00, 1.50 higher; 14-17 lbs. 98.75 trimmed; 17-20 lbs. 83.50-85.00, steady; 17-20 lbs. 85.50 trimmed.

SKINNED HAMS: 14-17 lbs. 76.25-77.00; 17-20 lbs. 78.50, 50 higher; 20-26 lbs. 75.50-75.75, 50-75 higher.

BELLIES, SDLS: 8-10 lbs. 45.00, frzn, T.I.S.; 18-20 lbs. 49.00; 20-25 lbs. 45.50 fresh & frozen.

PORK NECKBONES 16.00-18.00, late 18.00 frozen.

PORK JOWLS: 42.50, fresh part load.

PORK JOWLS: 42.00 frozen.

DERINED BELLIES: 9-11 lbs. 59.75 part load.

PORK CHITTERLINGS: 30.00 T.I.S.

New Holland Horse

New Holland Sales Stables
Monday, June 26, 1978

Reported receipts of 371 horses, mules and ponies. Market steady with last week's market.

Load of riding and driving out of Tennessee, driving 400-1025, riding 570-700; driving horses 200-900; riding horses 200-375; better horses 425-650; lightweight killers 26-32; heavyweight killers 37-40; mares 15-55; colts 5-25; geldings 15-50; larger ponies 65-210.

Joliet Cattle

Joliet, Illinois
June 28, 1978

CATTLE: Salable receipts 5,000, last week 7,493, and last year 8,717. Trading slow on Monday, moderately active Wednesday. Average choice to prime slaughter steers at mid-week 2.00-2.50 lower than Wednesday of last week, after declines of 3.50-4.00 on Monday; Good to average choice 2.50-3.50 lower. Slaughter heifers 2.50-3.00 lower. Cows steady to 50 lower.

SLAUGHTER STEERS: Mixed high choice and prime 3-4 1100-1300 lbs. 52.50-53.25 Monday; 54.25-54.75, with 1 load 55.00 Wednesday. Choice 2-4 1050-1250 lbs. 51.00-52.50 Monday, 52.00-54.25 Wednesday. Mixed good and choice 2-3 1000-1200 lbs. 48.00-51.00 Monday to 52.50 Wednesday. Few Good 2-3 1200-1300 lbs. Holsteins 46.00-46.50 Monday.

SLAUGHTER HEIFERS: Three loads mixed choice and prime 3-4 1000-1100 lbs. 51.50 Monday; 52.00, 1 load 52.50 Wednesday. Choice 2-4 1000-1100 lbs. 51.50 875-1050 lbs. 49.50-50.50 Monday, 50.75-52.00 Wednesday. Mixed good and choice 2-3 800-1000 lbs. 47.50-49.50 Monday, 48.50-50.75 Wednesday. **COWS:** Utility & Commercial 1-3 36.00-38.50.

CURIOUS RED?

WRITE OR CALL FOR FREE INFORMATION ABOUT RED & WHITES AND THE OPEN HERDBOOK AND GRADE-UP PROGRAM OF THE RED & WHITE DAIRY CATTLE ASSOCIATION.

Subscribe To Our Monthly Publication:

THE RED BLOODLINES

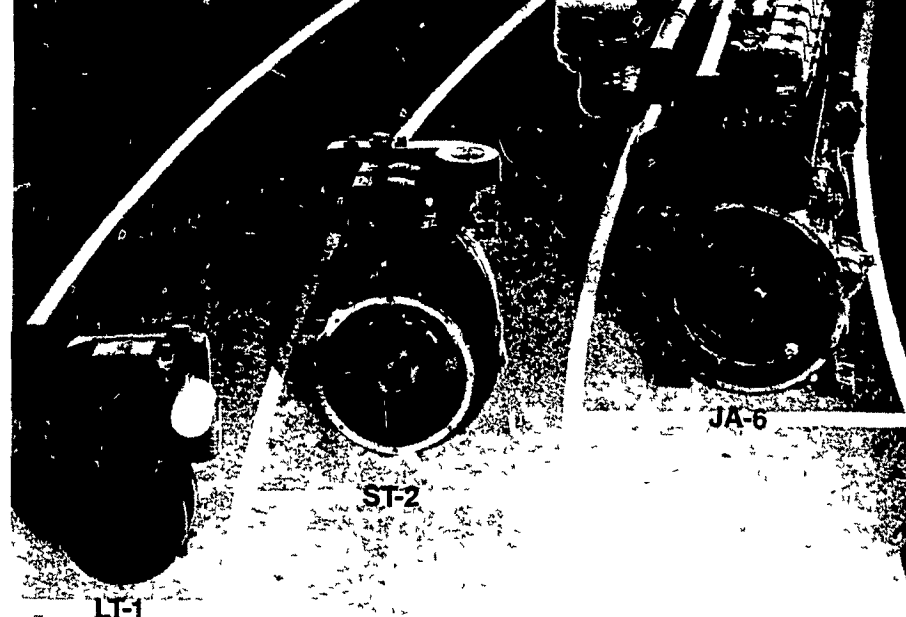
Introductory offer - 12 Issues only \$2.00



RED & WHITE DAIRY CATTLE ASSOCIATION

Crystal Spring, Pennsylvania 15536
814-735-4221

Long distance runners.



• Good used diesel engines
SR 2 12 HP. Lister.

• New Sputnik wheels
and Parts.

• Used Sputniks in
stock.

CALL HORNING'S WAREHOUSE 717-354-4158 or
IF NO ANSWER CALL 717-354-4374

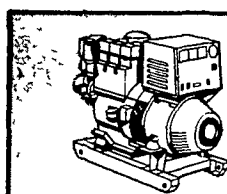
DIESEL & GAS

SALES & SERVICE

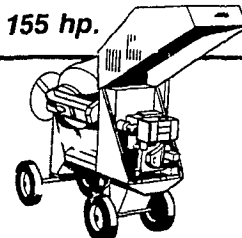
SMUCKER'S ENGINE SHOP

RD 1, GORDONVILLE, PA. 17529

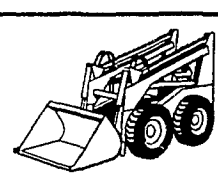
Models from 3 to 155 hp.



GENERATOR SET



CEMENT MIXER



FRONT-END LOADER

For dependable, long-haul performance you can't find a diesel with a better track record than Lister. Lister diesels commonly log 40,000 hours (4½ years) with only routine maintenance. They start in any weather: 125° above — or plenty below. Moving parts are completely protected against dirt, dust, grime, and abuse. Yet they're easy to get at for fast, simple maintenance. And Lister's trouble-free, air-cooled efficiency cuts costly downtime to an absolute minimum.

CHOOSE THE MODEL FOR YOUR NEED

ST 1-2 & 3 4½-35 h.p.

HR 2-3-4 & 6 17-113 h.p.

DISTRIBUTOR FOR:

SLANZI, PERKINS & LISTER DIESELS

Lister

DIESEL POWER