

Three Internationals sweep Buck's 12,000 pound event

THE BUCK — Three International tractors swept the 12,000 pound superstock class at the Buck Tractor Pulls two weeks ago. Winner in the contest was Harry Griest of Coatesville, followed by Tom Bedgar of Freeland, Maryland and Tom Middleton of Ridgely, Md.

Griest, driving an IH 1456, piloted his red machine for a distance of 300 feet, a full pull. Bedgar, driving an IH 856, was stopped at 299 feet, five inches, and Middleton, aboard an IH 1066, came to a halt at 289-10.

In the 5000 pound modified class, Gary Mills of Fallston, Md. won with a full pull and subsequent 240-2. Curtis Stoltz of Myerstown placed second. Like Mills, he had a full pull on his first run, and

was stopped at 230-2 when the weight movements on the 57,000 pound sled were changed for the second heat. Ted Houck of Gap was third.

Hughes and Huff of New Windsor, Md. won the 9000 pound open class with their hemi-powered rig, traveling a distance of 299 feet and five inches. Griest placed second with a pull of 298-3, and Dave Johnson of Deerfield, N.J. came in third at 267-3. He drove a machine powered by three 427 cubic inch Ford engines.

Jim Brubaker, Quarryville, outdistanced Tim Stauffer of Ephrata and Dale Smoker of Cochranville in the 5000 pound super stock class. Driving an Allis-Chalmers 180, the Lancaster Countian's pull measured 247 feet. Stauffer was second with a 221 foot pull from his

Deutz 8006 Smoker managed to go for 178-5 with his A-C180.

In the 9000 pound super stock class, Eddie Horman of Frederick, Md. beat the competition with his IH 1466. He roared down the track for a distance of 244 feet, nine inches. Mark Stauffer, driving a Deutz 9006, placed second with his effort of 233-7. Third was Quarryville's Marlin Brubaker aboard an Allis-Chalmers D-21 with a distance of 223 feet.

Dave Johnson, a New Jersey puller, scored a victory in the 7000 pound modified class with his trimotor Ford. His winning distance was 278 feet and seven inches. Lester Houck of Kinzer placed second with 266 feet, while Hughes and Huff took third at 232-11.

Mark Stauffer of Ephrata drove his air-cooled Deutz 9006 for a distance of 290 feet, 10 inches, to win the 7000 pound super stock class. His brother, Tim, aboard a Deutz 8006 placed second with a distance of 283-4. Marlin Brubaker placed third with his A-C D-21, coming to a halt at 280-3.

Visitation nite held by York-Adams Pomona

YORK — The York-Adams pomona visitation night program was held on June 9 with Gideon Grange, Hanover, as host and Fawn Grove Grange presenting the program.

As part of the evening, Everett Richardson spoke on "Education in the Early 1920's" and Mrs. Mary Devilbliss, teacher at the Farm Grove Elementary School, shared some of her present experiences. Special guest speaker was Sen. Ralph Hess, of the 28th congressional district.

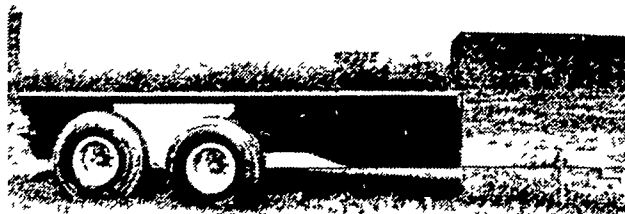
The final visitation night program will be presented by Gideon Grange at Biglerville Grange hall on August 4 at 8 p.m.

"Degree Day" for York-Adams Pomona will be July 22, at Valley Grange Hall, Lewisberry, beginning at 5 p.m. with a covered-dish

meal. Degree work will begin promptly at 6 p.m. The following Granges will present the degrees: first, Valley Grange; second, the York-Adams Youth Team; third, Biglerville Grange, and fourth, Red Lion Grange.

On July 29 the Four County Picnic for Area D, involving York-Adams, Cumberland, Dauphin and Lebanon Counties, will be held at Killinger Grove, Millerstown, Dauphin County, beginning at 2 p.m. A bus will be going from York-Adams Counties, with stops at Red Lion Grange Hall at 11:45 a.m.; Jay's Superthrill at 12 p.m., and Camp Hill Shopping Center at 12:30 p.m. For information call Frank Sheffer - 244-3384. The picnic is for Grange members and guests.

FONTANA LIQUID MANURE SPREADERS



FEATURES:

- Axles on Bronze Bushings.
- 21 inch Discharge Fan.
- Hydraulic or PTO.
- 14 inch Chopper Type Auger.
- 3/16 inch Wall Thickness.
- Unitized Trailer - All weight pulled from axles.
- Longer Tongue, Better Turning Radius
- Sure Seal Valve.

SIZES AVAILABLE 1,500 - 2,600 3,300 GAL.

SPECIAL SIZES QUOTED

JUNE DAIRY MONTH INTRODUCTORY SPECIAL



3,300
GAL.

\$4900⁰⁰

AUTHORIZED DISTRIBUTOR

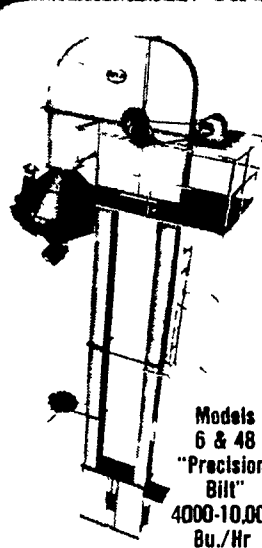
J. M. HORST
SERVICE CO.

Box 231 Quentin Pa 17083
DEALER INQUIRIES INVITED

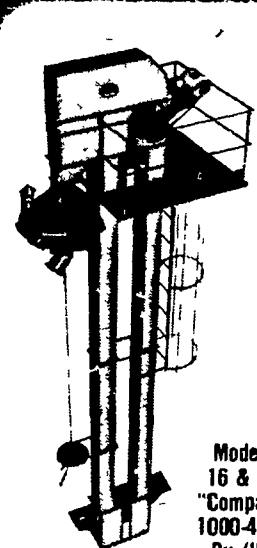
The York Line



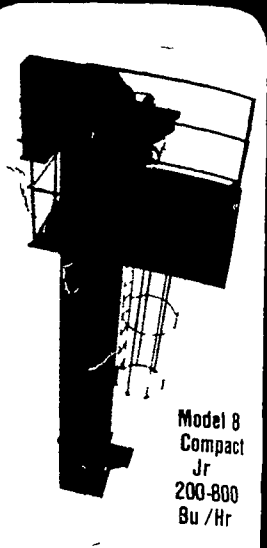
"Dependable Performance"



Models
6 & 48
"Precision-
Bilt"
4000-10,000
Bu./Hr



Models
16 & 24
"Compact"
1000-4000
Bu./Hr



Model 8
Compact
Jr
200-800
Bu./Hr

FOR HANDLING GRAIN • FEED • FERTILIZER & BULK MATERIALS

SEE US FOR YOUR BUCKET ELEVATOR NEEDS



Loucks

GRAIN EQUIPMENT, INC.
Box 216, RD 12,
York, PA 17406

NEW # - (717) 755-2868

FARMER BOY PRODUCTS

RD 4, BOX 135 MYERSTOWN, PA 17067

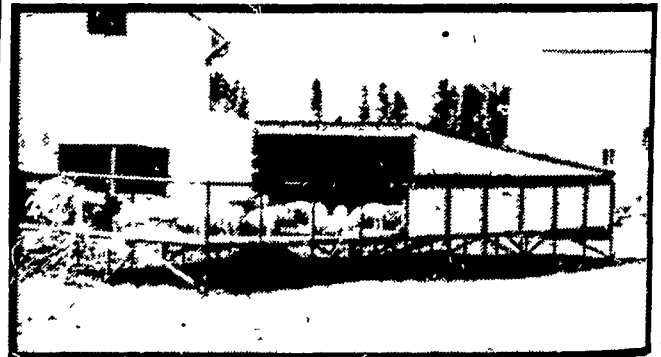
Farmer Boy
Products



10% OFF DURING MONTH
OF JUNE

MODEL 70 HOG SHELTER

Holds up to 70 market Hogs
Size - 14' x 40', 14' x 24' Roof Area
14' x 20' Slated
14' x 20' Rough Oak Shiplap



MODEL 40 HOG SHELTER

Holds up to 40 market Hogs.
Size - 10' x 30', 10' x 16' Roof Area
10' x 15' Slated,
10' x 15' Solid Tongue & Groove

OPTIONS ON MODEL 70 & 40 ARE:

- ★ Weather Guard: Holds heat in during cold weather, Gives extra shade in summer.
- ★ Pen Divider on Model 70 Available.

NEW! MODEL 20 SOW SHELTER

- Holds up to 12 Brood Sows
- Size 10' x 16' - has full roof
- 5' high 1" Styrofoam Ceiling
- 4' x 4' front door opening
- Hinged rear door for ventilation
- Inside fence is rough oak
- Outside painted steel; 2" pipe frame
- 2 1/2" pipe skids

ALL MODELS AVAILABLE IN KIT FORM:

- Kit includes everything except paint
 - All pipe is pre-cut, lumber must be cut to length
 - Wire fencing and metal siding is pre-cut
 - All nails, bolts, screws, hinges included
- 20% Off List Price Plus Regular Discount**
Save Dollars - Buy In Kit Form And Pick Up

NOW!
LEASING PROGRAM AVAILABLE
Don't Tie Up Your
Normal Line Of Credit

JOIN THE MANY
SATISFIED CUSTOMERS -
ORDER TODAY AND SAVE!
OVER 40 UNITS SOLD THIS WINTER!
Sales Manager

LEON HOOVER

717-266-5612

ALL HOG SHELTERS FEATURE:

- Portable on Skids.
- Load Out Door.
- Insulated Ceiling Provides Year-Round Use
- Nebraska Slant Roof Design.
- Rear Hinged Door Ventilation.
- Wood Floors Mean Better Feed Conversion and Health.
- Less Than 1/2 The Cost of Permanent Structures
- Not Taxable.
- Built To Last 10 Years Or More.
- Ideal For Leased Properties.
- Delivered Fully Assembled.
- 2 1/2" Pipe and Weld Structure w/Painted Steel
- Fencing Welded Hog Panels.