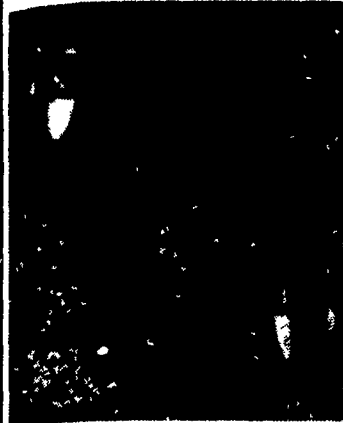


**SPECIAL ON McCURDY
8 & 10 TON WAGON GEARS**



8 TON
With Extendable Hitch
6", 8" or 10" Rims
YOUR CHOICE

\$435 Not Set Up

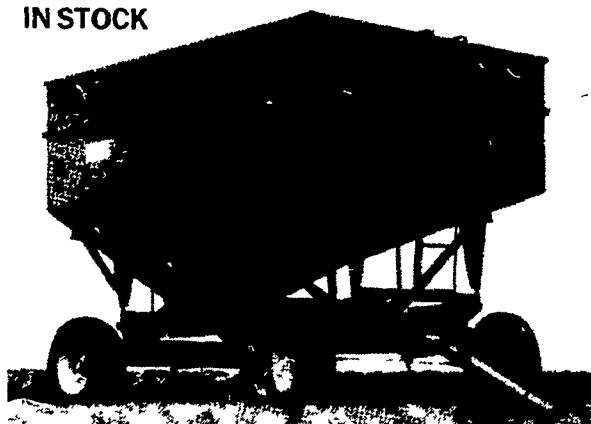
10 TON
With Extendable Hitch
6", 8" or 10" Rims
YOUR CHOICE

\$495 Not Set Up

Tongue swings a full 180°, eliminating broken or bent tongues while letting you turn sharper, on standard 7 and 10 ton gear.

**McCURDY
GRAVITY BINS**

IN STOCK



AUGER ATTACHMENTS AVAILABLE



**MODEL 1845S
UNILOADER**

w/12.00x16.5 Tractor Tires,
73" Dirt Bucket and Bucket Level Gauge.



**ONE ONLY!
\$10,608**

OFFER GOOD
ONLY TILL
JUNE 30, 1978,
THEN THERE
WILL BE
PRICE
INCREASE.

NEED A NEW HAY RAKE?

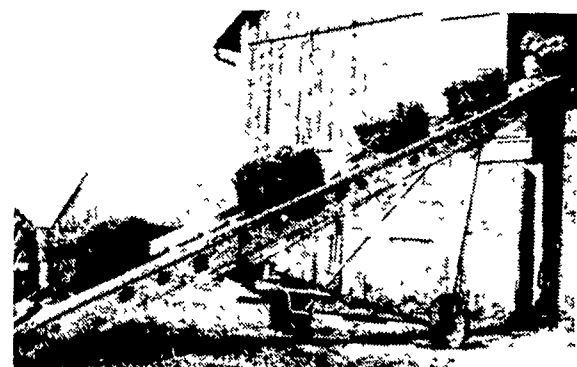
EZEE FLOW

Try a Model No. 126
Raking Width 8' wide,
5 bar w/long lasting steel
teeth, hitch and jack

\$1,453



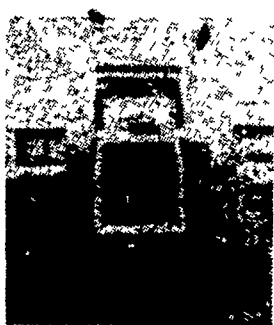
**HEAVY DUTY PORTABLE
ELEVATORS BY SPEED KING**



**IN STOCK
SET UP & READY TO GO**

With Heavy Duty No. 62 Chain & Shovel Hopper

- 31 Ft. **\$1130** F.O.B. Dealers Lot
 - 36 Ft. **\$1225** F.O.B. Dealers Lot
 - 41 Ft. **\$1300** F.O.B. Dealers Lot
- BALE SLIDES AVAILABLE



ATTENTION:

New Case 2670
Demo with 140 hrs.
in stock, loaded
with extras.

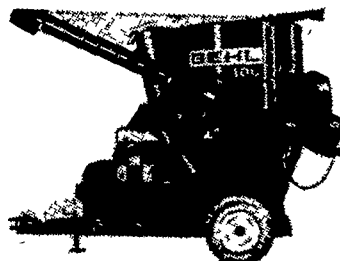
ONE ONLY!

Grab this one before
price increase
July 1, 1978

Only **\$38,875** FOB Our Lot

JUST ARRIVED

The All New Gehl
MIX ALL 100
IN STOCK —
Come, Take A Look!
Waiver Of Finance
Till Sept. 1, 1978.



SPEED KING TRANSPORT AUGERS

- 34 ft. long 6" auger transport **\$830**
 - 46 ft. long 6" auger transport **\$1025**
 - 53 ft. long 6" auger transport **\$1125**
 - 34 ft. long x 8" transport augers **\$1050**
 - 46 ft. long x 8" transport augers **\$1330**
 - 53 ft. long x 8" transport augers **\$1450**
- All prices include a PTO Drive shaft or electric motor mount and flex board hopper.

CULTIVATORS IN STOCK
Ready For Delivery

- 2-row w/coulters and shields **\$395**
- 4-row high speed w/Danish tines ... **\$1185**
- 4-row high speed w/Danish tines w/guide coulters for hillside slopes... **\$1325**
- 6-row high speed w/Danish tines ... **\$1555**

Moridge Grain
Dryer Model 400
w/swirling hopper,
grain regulator
and grain cleaner,
PTO drive
All this for only
\$6,900



NEW TRACTORS

- Case 2670 4-wheel drive, cab, air, heat, PTO shaft, power shift transmission
- Case 1370 power shift trans, cab, air, heat
- Case 1175, w/cab, air & heat
- Case 970, no cab, power shift
- Case 1410 hydra shift trans, 80 HP
- Case 995 Syncromesh Diesel
- Case 885 Syncromesh Diesel

USED TRACTORS

- New Holland S.P. w/hay pickup Model 1800
- G M Diesel hydrostatic drive w/3-row narrow corn head
- Case 1370 w/cab, air, heat, 400 hours
- Case 580 Industrial Diesel Loader Tractor w/power shuttle, no PTO or hitch but a heavy duty loader tractor
- Gehl Model 115 Grinder Mixer

NEW SKID LOADERS

- 1845 Hydra Diesel
- 1830 Hydra Gas, 32 HP, 60" wide
- 1816 Hydro, Gas, 16 HP

TRUCK TIRES
In Stock

- 9 00x20 10-ply mud & snow traction tires, **\$125 each**

NEW PICKUP TRUCK TIRES

- (2) 8 75x16 5 Mud & Snow Dayton tractionite, **\$59.00 ea.**
 - (2) 7 50x16, 8 ply, Jetson mud & snow, **\$57.00 ea.**
 - (4) 10-15 All Terrain B F Goodrich, 4 ply, load range B, **\$63.00 ea**
 - (4) 10-15 All Terrain B F Goodrich, 4 ply, load range C, **\$67.00 ea**
- CAR TIRES**
- (2) FR78x14 General Jetson, steel belted radials, **\$37.00 ea.**
 - (2) FR78x14 steel belted radials, mud & snow grip, **\$46.00 ea.**
 - (2) GR78x14 steel belted radials, mud & snow grip, **\$47.00 ea.**

NEW SKID LOADER TIRES

- 1200x16 5 lug type Call
- 1000x16 5 lugs with tubes, **\$65.00 ea.**

USED TRACTOR TIRES

- 15 5x38, 6 ply, **\$15.00 - 1 only**
- 14 9x28, 6 ply, B F Goodrich Silvertown, **\$25.00**

**LOOKING FOR OLD
HAY RAKE OR
GRAIN DRILL TIRES?
IN STOCK:
4:00x36
Tires w/Tubes**

USED SKID LOADER

Case 1816, 16 HP
Hydraulic Augers
To Fit On Gravity Bins
Ideal For Small Grain
& Fertilizer Handling

Specials - 11Lx15 8 ply
flotation tires - **\$35**
12Lx15 8 ply flotation tires
\$43

**NEW FRONT
TRACTOR TIRES**

- 500x15, 4 ply **\$19.00**
- 550x16, 4 ply **25.00**
- 400x19 **29.00**
- 650x16, 6 ply **29.00**
- 600x16, 6 ply **25.00**
- 9 5Lx15, 6 ply **43.00**
- 11Lx15, 6 ply **78.00**
- 11Lx15, 8 ply **89.00**
- 10 00x16, 6 ply **58.00**
- 11.00x16, 8 ply **75.00**
- 7.5Lx15, 6 ply **35.00**

**NEW
TRACTOR TIRES**

- The all new B.F. Goodrich Radial Rear Tractor, 18.4x34...**\$389**
- 12 4x38, 4 ply, B F Goodrich, **\$98.00 - 1 only**
- 9 00x38, 4 ply, **\$69.00 - 1 only**
- 1 pr 20 8x38, 8 ply, B F Goodrich Silvertown, mounted on McCurdy clamp on dual with all the hardware, **\$1485 for pair**
- New 20 8x38 8 ply rear tractor, Goodyear, **\$430.00 ea.**
- Rear Tractor - 16 9x30, 6 ply- Firestone or Goodyear Torque grip, your choice, **\$150.00**
- Rear Tractor - 14 9x28, 6 ply w/tubes Goodyear power torque, **\$162.00**
- Rear Tractor - 15 5x38, 6 ply Seiverling, **\$165.00**
- 15 5x38, 8 ply, General deep lug, **\$185.00**
- 18 4x38, 6 ply, Goodyear power torque, **\$255.00**
- 20 8x34, 8 ply, Goodyear power torque, **\$385.00**
- 18 4x26, 6 ply, Goodyear traction torque, **\$189.00**
- 17 5Lx24, 8 ply, tubeless industrial, **\$192.00**
- 8 00x16, 2 ply, Goodyear Sure Grip rear tractor, **\$35.00**
- 13 6x28, 6 ply, Firestone Field & Road, **\$125.00**
- 16 9x24, 8 ply, Industrial, **\$239.00**
- 14 9x38, 6 ply, Seiverling, **\$149.00**
- 12 4x28, 6 ply, Firestone All Traction, **\$115.00**

NOTICE! BALER TWINE SPECIAL

9,000 or 10,000 In Stock

Under 10 Bales **\$11.75** each

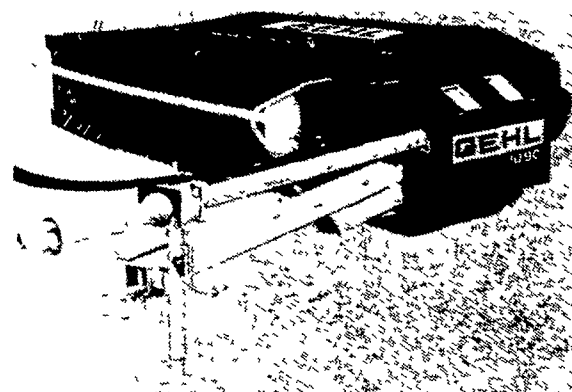
10 Bales **\$11.25** And Over 20 Bales **\$11.00** And Over

Prices Good Only While Present Supply Lasts.

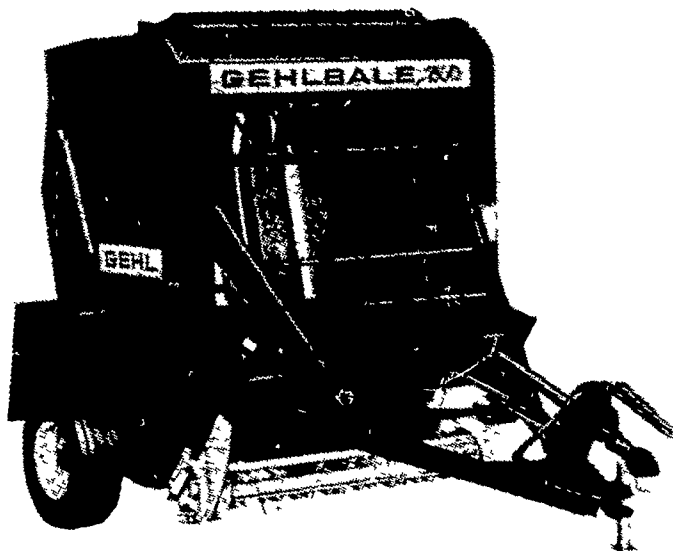
**LOOK AT THIS ▶ WAIVER OF FINANCE ON THIS NEW
GEHL EQUIPMENT LISTED BELOW! (Till March 1, 1979)**

**THE GEHL®
ALL NEW FARM EQUIPMENT
MOWER CONDITIONER**

CALL FOR A FIELD DEMONSTRATION.
WE ARE READY TO SHOW YOU
WHAT A GEHL MACHINE CAN DO.



NEW MODEL 1090 { **NEW MODEL 1070**
9 Ft. Cut **\$4,300** { 7 Ft. Cut **\$3,700**



BUSH HOG ROTARY CUTTERS

★ 3 Pt. Hitch ★ 5 & 6 Ft. Models In Stock
CALL FOR PRICE

BUSINESS HOURS:
Mon.-Fri. 7-5
Sat. 7-11:30



BINKLEY & HURST BROS.

133 Rothsville Station Rd., Lititz, PA. 17543 Ph: (717) 626-4705