

Top dairymen chosen

(Continued from Page 1)

Larry and Yvonne Mummert of East Berlin R2.

Mummert, a 1962 graduate of Spring Grove High School, won the coveted honor for Inter-State Milk Producers Cooperative. The Stonesifers

Slaughter steer prices lower

(Continued from Page 1)

Choice, mainly 2, weighing 1100 to 1225 lbs. brought \$54.75 to \$55.75.

According to the Lancaster Weekly Livestock Market, which is dated June 23, and bases its reports on markets held in Lancaster County for the first three days of the week, prices compared to last week's close for slaughter steers were down, \$1.50 to 2.00 lower.

The report relates that high choice and prime 3-4 slaughter steers weighing 1100 to 1325 lbs. brought \$54.50 to \$57.00; with a few in the early part of the week bringing \$57.00 to \$58.35. Choice steers, 2-4, weighing 1000 to 1375 lbs. brought \$53.00 to \$56.00, with sales on Monday and Tuesday mainly \$55.50 to \$57.50.

The Lancaster Weekly Livestock Market states that slaughter heifers were steady, cows were fully steady, bullocks were steady to \$1.00 higher, and bulls were \$1.00 to 1.50 higher.

For a more complete check on the prices of slaughter steers this week, check the market listings which start on page 2.

On the Futures market, cattle prices were also lower this week. Chicago cattle prices for August were quoted at 49.60, as of closing bids on June 22, down from 52.15 last week.

One commodity specialist stated that he believed that lower prices are due to farmers who have ac-

captured the title among contestants who are members of Maryland Cooperative Milk Producers, Inc.

Graybeal, a 1963 graduate of Solanco High School, was a runner-up in last year's contest. He, his wife, as well

as the other winning couples will attend the National Milk Producers Federation meeting in Seattle this November. There were 15 couples entered in the contest which the Graybeals won. Placing second were Douglas and Evelyn Perrow of Spout Spring, Va. Third were Larry and Mary Ann Kulp of Martinsburg, Pa., and fourth were G. Edward and Mary Jo Fiedler of Bel Air, Md.

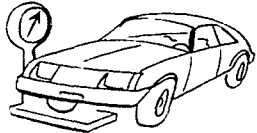
accumulated a lot of cattle and have now decided to sell them, some panicking when the price began to drop. They decided to sell their cattle now rather than take the chance of getting a big loss later.

One commodity specialist foresees higher prices in the future for he thinks the packers are empty, right now refusing to pay the high prices that the cattle are bringing.

One day soon, he thought the prices will go up again, as the packers will have to buy the meat needed.

Looking further ahead to the future, he predicts that prices for the slaughter steers will continue to rise, due to the national supply. There just aren't going to be enough cattle around and it isn't possible to replace them as quickly as they will be needed, he related.

WHAT'S NEW



The car of the future through greater use of high strength super plastics will be lighter than ever. According to a fiber glass industry spokesman first production parts made of new super plastics material should be on the road by 1980 offering a weight savings of 50 per cent or more per part. This will mean cars no longer will need heavy springs heavy shock absorbers and similar items which add to total weight and costs.

Auto makers believe lighter materials will help them meet federal regulations requiring a fleet average fuel economy of 27.5 miles per gallon by 1985.

In the MCMP contest, Jay and Ilona Hull, Jr. of Westminster, Md. placed second while Denise and Richard Burns of Jefferson, W.Va. placed third. Twelve couples were entered in the MCMP contest.

Inter-State's finalists included, in order, Robert and Penny Black of Altoona, Thomas and Dale Smith of Allentown, N.J., James and Barbara Long of Peach Bottom, and Donald and Sherry Ann Hoffer of Lebanon. There were 22 couples entered in the Inter-State contest.

All of the entrants were honored during ceremonies

held here at the resort motel and restaurant. The two-day Pennmarva convention featured several guest speakers, including Donald Shriver of Ohio who en-

couraged the several hundred guests to follow the example of Californians in letting their legislators know what they think of government regulations.

DRIED BLOOD THE NATURAL FERTILIZER

Available At:

FRANK HERR

Washington Boro, Pa. -717-872-7182

THE VILLAGE STORE

Village of Falmouth - 717-367-6962

AGBEST

- ★ ECONOMY
- ★ EFFICIENCY
- ★ DEPENDABILITY

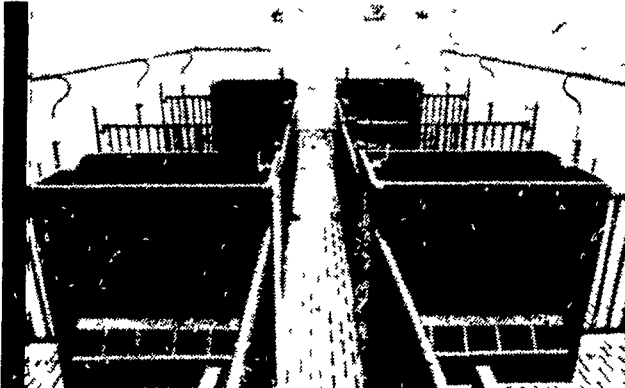
Make plans for a swine confinement building that is right for your operation.

What an AG Best Capsule will do for you.

- Provide uniform air distribution. No drafts
- Provide 2 environments within one environment for sows and pigs
- Reduce feed wastage and cost
- Reduce your labor: and time
- Reduce stress to a minimum
- Provide comfort

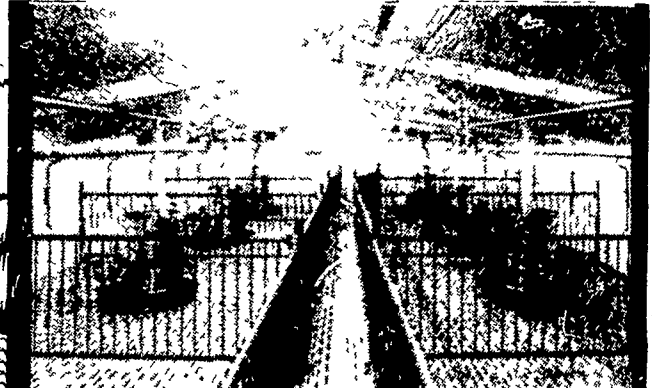
for the operator • Provide heavy insulation for less energy use • Provide all the tools needed for good management.

There are many Pig Capsule models for farrowing, growing and finishing. So plan on a building that is made right to do the right job for you



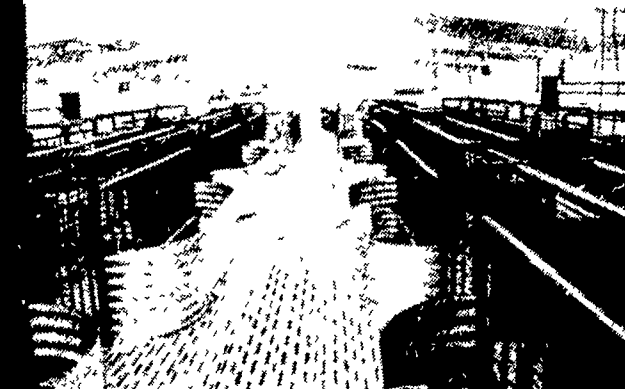
PIG CAPSULE

A controlled environment that can save more pigs. There are models with 8 to 20 pens equipped with partitions, feeders, nipple waterers and slatted floors. Nursery pens and growing pens and automated feed delivery systems are available.



HOG CAPSULE

Clean, dry and comfortable hogs can gain faster on minimum feed, have less disease and are more profitable. 8 or 10 pen models have vertical steel tube partitions, a rotary feeder and 2 nipple waterers in each pen. Automated feeding available.



SOW CAPSULE

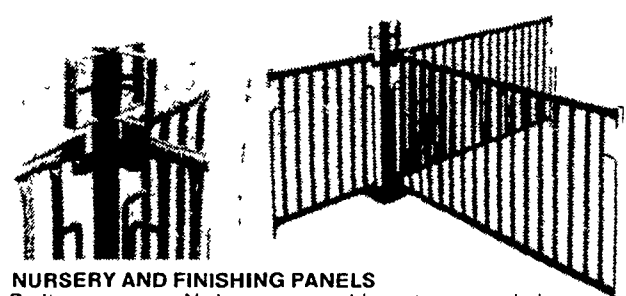
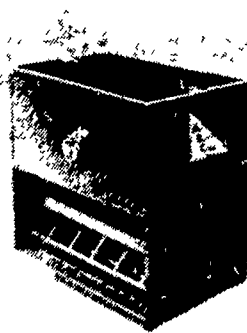
A healthy environment that helps wean more pigs per litter and cuts down on the labor needed to do the job. There are models with 4 to 24 farrowing stalls that have built-in feeders, watering cups and easily adjustable side panels.



SOW-PIG CAPSULE

A good farrowing system for medium or small operations. A farrowing building is combined with pig nursery pens. You have choices of models from 4 farrowing stalls with 2 nursery pens to 16 stalls and 8 pens.

The Ag Best nursery feeder has an expanded throat that helps eliminate packing and bridging. An easy top adjustment regulates feed flow. A step-back feeder design keeps manure from dropping in the trough. Five partitioned feeding spaces on each side. Capacity is 11 bushels. Construction is 14-gauge welded steel.

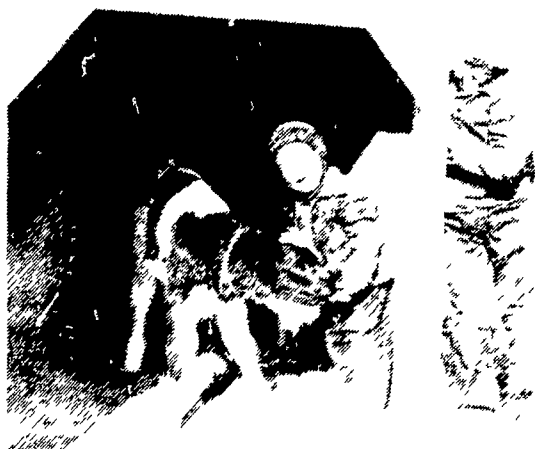


NURSERY AND FINISHING PANELS

Built in one piece. No loose, removable parts are needed. Panels open from either end and swing both ways. Posts have a unique latch with pull and twist action for instant release or positive catch (patent pending).

CUSTOM BUILT CALF HUTS

MADE TO ORDER



Build a separate pen in front of each calf. Space each pen and calf far enough apart from the next unit to keep each calf separated from its neighbor. This isolation of each unit is very important. It helps prevent the spread of infectious diseases.

Straw or other suitable bedding is used for the floor. The calf is a proven design that provides a dry, draft-free shelter for the animal. The result: a much healthier calf!

ELMER M. MARTIN

R.D. 2, Myerstown, Pa.
PH: (717) 949-2081

MANUFACTURED ENVIRONMENTALLY CONTROLLED CONFINEMENT BUILDINGS

KIMMICH FARM EQUIPMENT

P.O. BOX 5190
NEFFSVILLE, PA 17601

I would like to learn more about THE AGBEST CAPSULE.

- FARROWING
- FINISHING
- NURSERY
- CALF

NAME: _____

ADDRESS: _____

TELEPHONE: _____