

Livestock market and auction news

Pa. Auction Summary

of 17 Livestock Auction Market Reports June 23, 1978
CATTLE 8844. Compared to 8068 last week and 8915 a year ago. Compared with

last week's market, slaughter steers and slaughter heifers 1.00-3.00 lower. Slaughter cows steady to 50 cents higher, slaughter bullocks steady to 1.00 lower, slaughter bulls unevenly steady. High Choice & Prime YG slaughter steers 55.00-58.00.

Choice YG 53.00-57.75, Good 48.00-54.00, standard 44.00-50.00, few Utility 38.00-47.00. Choice YG slaughter heifers 46.00-55.00, Good 44.00-50.00, standard 38.50-45.00, few Utility 35.00-40.00. Utility & commercial slaughter cows 38.50-43.50, commercial cutters 37.00-41.00, canner & L. cutter 33.00-38.00, shells down to 28.00, few choice slaughter bullocks 49.00-52.00, good 46.00-50.00, few standard 45.00-48.00. Yield Grade #1 1000-2000 lbs. 46.00-52.00, few yield grade #2 850-1500 lbs. 43.00-47.00.

FEEDER CATTLE: Good & choice 300-700 lbs. steers 50.00-58.00, med. 350-650 lbs. 40.00-48.00. Medium & good 400-700 lbs. heifers 40.00-48.00. Good & Choice 400-750 lbs. bulls 41.00-54.00.

CALVES 3960. Compared to 3350 last week and 4578 a year ago. Vealers steady to \$5.00 lower. Prime vealers choice 64.00-81.00, good 60.00-70.00, few standard & good 110-130 lbs. 58.00-65.00, 90-110 lbs. 50.00-65.00, 70-90 lbs. 40.00-60.00, few Utility 55-100 lbs. 30.00-55.00.

FARM CALVES: Holstein bulls 90-120 lbs. 63.00-85.00, holstein heifers 90-130 lbs. 60.00-85.00.

HOGS 6283. Compared to 7458 last week and 7376 a year ago. Barrows and gilts 1.00-2.00 lower. US No. 1-2

200-230 lbs. barrows & gilts 50.00-52.50, No. 1-3 195-240 lbs. 48.00-51.25, No. 2-3 190-250 lbs. 47.00-49.00, few No. 2-4 250-300 lbs. 43.00-47.75, few No. 1-3 130-185 lbs. 40.00-48.10. SOWS steady. US No. 1-3 300-550 lbs. sows 39.00-46.00, few No. 2-3 400-600 lbs. 35.00-40.00. BOARS 30.00-40.00 few down to 23.00.

FEEDER PIGS 1613. Compared to 1584 last week and 1938 a year ago. Steady. US No. 1-3 25-35 lbs. feeder pigs 22.00-40.00 per head, No. 1-3 35-50 lbs. 35.00-50.00.

GRADED FEEDER PIGS 2785. Compared to 2864 last week and 3181 a year ago. All prices per hundredweight. Steady to weak.

US 1-2 25-40 lb. 85.00-110.00; 40-50 lbs. 90.00-110.00; 50-65 lb. 75.00-96.00; 2-3 25-40 lb. 75.00-95.00; 40-60 lb. 60.00-90.00.

SHEEP 984. Compared to 744 last week and 948 a year ago. Spring slaughter lambs 4.00-6.00 lower. Choice 60-110 lbs. 50.00-62.50, good 60-100 lbs. 45.00-55.00. Slaughter ewes 10.00-26.00.

Compared last weeks close, slaughter steers 3.00-4.00 lower, most decline on high choice and prime. Slaughter heifers 3.00-3.50 lower. Cows steady. Bulls weak. Sharp downturns in slaughter steers and heifer prices early in the week apparently were the result of recent sharp declines in the wholesale carcass trade and live buyers attempting to adjust their live costs accordingly. Slaughter supply mainly choice and mixed choice and prime 2-4 1050-1300 lb. steers, about 25 per cent heifers and 15 per cent cows.

SLAUGHTER STEERS: Mixed Choice and prime 2-4 1050-1300 lbs. 55.00-55.75, small lot 56.00. Choice 2-4 950-1350 lbs. 53.00-55.50, mostly 53.00-55.00. Mixed good and choice 2-3 900-1150 lbs. 52.00-53.50. Good 2-3 900-1100 lbs. 49.00-52.00. Few lots good and choice 2-3 1100-1150 lb. holsteins 49.00-50.00. Few standard and good 2-3 1050-1500 lb. holsteins 46.00-48.00.

SLAUGHTER HEIFERS: Couple loads mixed choice and prime 2-4 900-950 lbs. 53.50-54.00. Choice 2-4 800-1000 lbs. 51.50-53.50. Mixed good and choice 2-3 700-950 lbs. 50.00-52.00. Few good 2-3 700-900 lbs. 48.00-50.00.

COWS: Utility and commercial 2-4 36.00-39.00. Boning utility 1-2 39.00-40.00. Cutter 1-2 34.00-38.00. Canner and low cutter 1-2 30.00-34.00.

BULLS: Yield grade 1-2 1050-1700 lbs. 44.00-47.00, individual yield grade 1 1600 lbs. 48.00. Few yield grade 1-2 900-1000 lbs. 41.00-43.00.

FEEDERS: Including around 800 at Thursday's auction. Feeder steers and heifers 1.00-3.00 lower, large share fully 2.00 lower. Demand moderate at best for bulk of offerings. Supply mainly choice and mixed good and choice 500-650 lb. steers and 400-600 lb. heifers.

FEEDER STEERS: Few lots Choice 360-460 lbs. 60.00-60.25; 500-650 lbs. 54.75-59.50, load 800 lbs. 55.50; few lots 900-1000 lbs. 48.00-51.25. Few lots mixed Good and Choice 300-400 lbs. 54.25-57.25. Few Good 375-425 lbs. 52.25-54.25. Few lots Standard 550-970 lb. Holsteins 44.00-46.75.

FEEDER HEIFERS: Few lots choice 300-500 lbs. 51.00-52.25; 500-600 lbs. 49.75-51.75. Mixed good and choice 300-500 lbs. 47.00-50.75. Few good 300-500 lbs. 45.00-48.00. Small lot good 4-5 year old stock cows with calves at side 345.00 per pair.

St. Louis Cattle

National Stockyards
 June 22, 1978

Receipts this week 4,700
 Week ago 5,300
 Year ago 5,800

SANDBLASTING POINTING WATERPROOFING

From repairing drafty, leaking walls to complete stucco removal and repointing, exterior restoration of farmhouses is my specialty!

REASONABLE RATES
JAMES H. DOSTER
 507 South Spruce Street
 Lititz, Pennsylvania 17543

For information or a free estimate, return coupon below.

Name _____

Address _____

City _____ State _____ Zip _____

Phone: Area _____

Directions to your home: _____

ANNOUNCING

QUEEN ROAD REFRIGERATION

IS NOW AN AUTHORIZED DISTRIBUTOR FOR



"THE DIESEL WITH A DIFFERENCE"

Cuts your power costs because it's way ahead of its time on all points.

AVCO-VM diesel engines are world-proven money-savers. They deliver maximum power efficiency immediately, under any sudden load or climate variation. Their higher power to weight ratios mean NO REDUCTION IN HORSEPOWER to qualify for pollution standards.

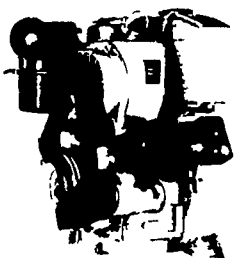
They're stingy on fuel, too. Many users report fuel consumption CUT IN HALF — and more — compared with gasoline engines. In some installations, our diesels are delivering more than

TWICE the hours of operation per gallon of fuel.

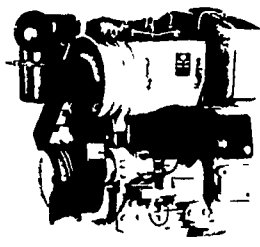
Faultless performance is the norm, rather than the exception. A choice of 27 premium quality air-cooled Avco-VM's (5 to 670-hp) means there's one that's right for your application.

Modular, unitized construction means fewer specialized parts, lower weight per hp, lower maintenance costs, 70% parts interchangeability — and they'll fit the tightest space.

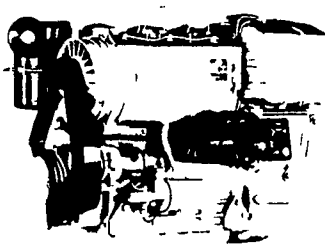
1050
 SU
 SERIES



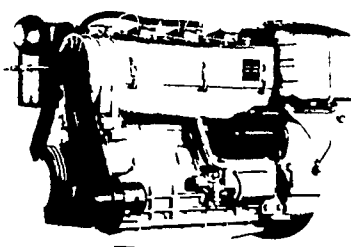
2800 R.P.M.
 22 SAE HP
 20 DIN HP



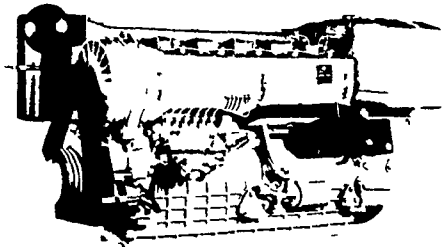
2800 R.P.M.
 44 SAE HP
 40 DIN HP



2800 R.P.M.
 66 SAE HP
 60 DIN HP



2800 R.P.M.
 88 SAE HP
 80 DIN HP



2800 R.P.M.
 132 SAE HP
 120 DIN HP

THE "RIGHT FROM THE START" DIESEL ENGINE LINE FOR FAULTLESS PERFORMANCE.

QUEEN ROAD REFRIGERATION

BOX 67, INTERCOURSE, PA. 17534

PHONE: 717-768-9006

AFTER 5 PM — JOHN D. WEAVER 768-8355

Gid Dienner 768-8521

Sam Stoltzfus 768-3594

Or Answering Service 354-4374

24 HOUR
 SERVICE