

REAL ESTATE

REAL ESTATE

**FARM FOR SALE BY OWNER**

Juniata Co., 1/2 mile from Rt. 75, 125 acres, over 50 A. tillable, bordered on one side by the Tuscarora Creek, good hunting and fishing, barn converted into a broiler house that houses 12,000 birds, automatic feeders, waterers and fans. Ground floor cemented for cattle or hogs, modern ranch house 28'x53', 3 bedrooms, 1 1/2 bath, fireplace in livingroom and basement, ample closet space. Price \$150,000.  
717-734-3661 RD, Honey Grove, PA 17035

**MOHAWK VALLEY**

Dairy farms in and around the "Mohawk Valley." One of the largest selections of farms in this Mohawk Valley area. All sizes, all prices.

When farm hunting, contact:

**JOHN L. SUBIK, Realtor**

27 West State Street, Johnstown, NY 12095  
or Call: 518-762-4942 or 518-762-4451.

**WE HAVE FARMS.....**

200 acres, 63 stanchion barn, two silos, good sc.is, excellent residence \$160,000 stocked and equipped

375 acres, 110 tie stalls, two residences, very good soils, parlor with low line pipeline \$218,000 bare

357 acres with 250 tillable Excellent soils Three residences, 154 stanchions \$300,000 bare

We Have Many Others Of Various Sizes, Also Parcels of Land.

**NEA REALTY**  
Ithaca, New York  
607-273-7300

**FRANKLIN COUNTY**

**FARMETTE** - 16 1/2 acres with spring, barn, smokehouse, spring house, garage and workshop. Home has 6 bedrooms, 2 baths, oil heat, walk out basement, nice set back from road. For the discriminating buyer.

**KOONS REAL ESTATE**

717-597-8300

Box 153, Shady Grove, PA 17256

**FARMS FOR SALE**

198 Acre top dairy farm, all tillable with as high a productivity as can be found anywhere in country. Manor home and showplace.

188 acre joins the above.

364 acre dairy farm, double 6 parlor, 175 F.S., 5 silos. Good house & 2 mobile homes. \$1400 per acre.

500 acre dairy farm, 6 silos, 2 are new Harvestores with feeding system. Stock and equipment available for quick takeover. Also other farms.

**EDWARD N. DERR**

New Windsor, Md. — 301-848-2420  
Associate to Royd Smith Realty

**START MILKING TOMORROW**

**75 Cow Dairy Stocked & Equipped**

Milking parlor, free stall barn, heifer barn, calf barn, machine shed, 3 cement silos.

Beautiful cows - some registered - over 16,000 lbs. milk average. Good milk market

Full line of good equipment.

Large remodeled tow story home.

Excellent soil - 150 tillable acres

Buy for \$75,000 cash. Price of \$310,000 with excellent financing.

We Have Many Other Farms - 100-1000 acres.  
All Prices

**RURAL REALTY**

Venice Center, NY 13161

Call toll free 24 hour service:

In NY State - 800-962-1480

Out of NY State - 800-448-4511

**BRADFORD COUNTY FARM**

420 acres, 2 houses, 2 barns, 2 Harvestores - 20x60 and 20x80, 1600 gal. bulk tank, currently milking 130 cows, ready to go operation that is priced right. From Owner.

717-549-5618

**FARMS FOR SALE**

#129 - 104 acre farm \$116,000. House plus cottage, large barn plus others. 70 tillable, 20 woods. Just reduced to \$100,000.

#126 - 40 acre farm \$77,900. Near Halifax, barn, shop, home.

#118 - 50 acre farm \$89,000. All tillable, two barns, remodeled home valued at \$65,000. Near Danville.

#119 - 59 acre farm \$59,000. 11 room home, large barn in excellent condition, equipment included - 2 tractors, harrow, baler, 2 wagons, plow, drill, sickle mower and blade.

**STROUT REALTY**

Hegins, PA  
717-682-3241

**LEHIGH COUNTY FARM**

Located near Breinigsville. 18 flat acres, 95% tillable - stone farm house, newly rewired, 3 bedrooms, fireplace in master bedroom. House is livable but needs work. Stone barn. This farm is ideal for horses or livestock, \$79,900.

Call Realtor Associate Ron Bealer  
215-398-2559



**new pennsylvania realty, inc.**

4610 HAMILTON BLVD., ALLENTOWN, PA 18103

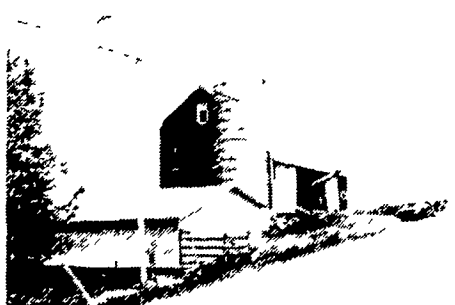
Member of Farm and Land Institute

**WHY NOT THE BEST** - If you will be looking for a farm why not start looking now See the available farms before the best are sold and while you can see the farms with crops and pastures growing. Call Kingsway Realty.



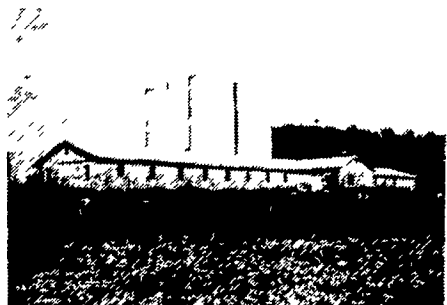
**SPECIAL MILK MARKET**

238 acres, 200 very productive tillable acres with 75 dairy stalls, 6 unit pipeline milker, 2 1,000 gallon milk tanks and 5 silos A lovely brick 12 room and 3 bath home For information about the special milk market call Kingsway Realty. Priced at \$300,000.00.



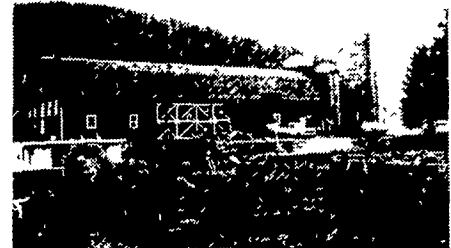
**NICE SMALL OPERATION**

106 acres, 80 tillable, 36 dairy stalls, clay barn cleaner 16x60 and 12x42 silos, 400 gallon Girton tank Nice 10 rooms and bath home Priced at \$128,000.00.



**90 COMFORT STALLS**

321 acres, 200 tillable, new 90 comfort stall barn, 3 large silos 6 unit Bou-Matic pipeline milker, 1,000 gallon milk tank and a 2 unit frame farm home. Priced at \$275,000.00.



**TIE THE COWS AND START TO MILK**

This place is ready, no improvements needed 217 acres, 160 tillable, pipeline milker, bulk tank, 4 silos, barn cleaner with a solid piston waste disposal Beautiful brick 9 room and 2 bath home with a lovely fireplace. Priced at \$298,000.00.



**NEW BARN**

235 acres, 140 tillable, 80 free stalls, double 4 milking parlors, 600 gallon milk tank, 20x60 cement silo and 20x35 Harvestore A very nice 10 room 1 1/2 bath home with a beautiful fireplace Priced at only \$166,000.00

**WHY NOT THE BEST** - If selling a farm why not use the best professional services available, have your farm effectively advertised, shown and sold with minimum problems and maximum satisfaction for yourself? Call Kingsway Realty!

**CALL A FARM SPECIALIST AT**

**PHIL BRUBAKER**  
717-392-0414

**CARL DILLER**  
717-464-2233

**RAY DENLINGER**  
717-464-4663

**RAYMOND R. LANDIS**  
717-394-6952

**CLARENCE LYONS**  
717-569-9675

**JOHN WOLGEMUTH**  
717-367-3825



**KINGSWAY REALTY**

REALTORS,  
149 E. KING STREET, LANCASTER  
PHONE: 717-299-0791

