

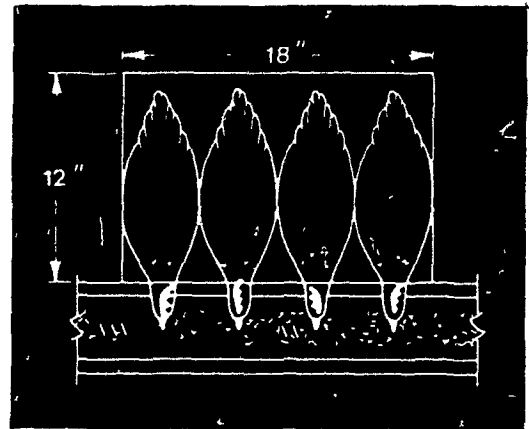
# THE REVERSE CAGE

## EVERYBODY'S TALKED ABOUT IT.

### A. R. WOOD BUILT IT.

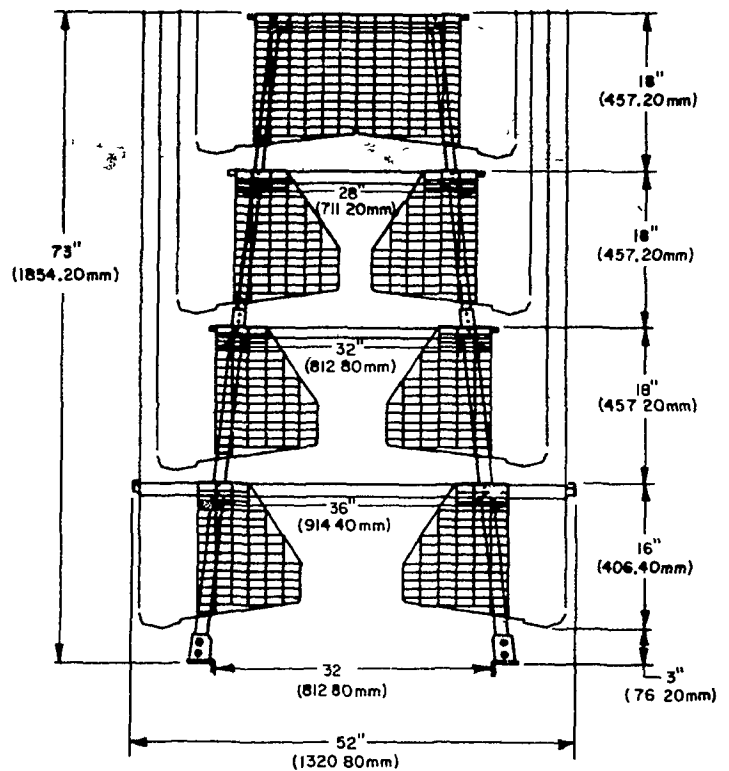
The 4-Deck Reverse Cage Slant Back System from A. R. WOOD,  
Is Built To Deliver EXTRA NET PROFIT: UP TO 50¢  
EXTRA NET PROFIT PER HEN PER YEAR!

Research has confirmed that less competition at the feed trough is one key to more eggs and more net profit. With proper management, the Northco® 4-Deck Reverse Cage Slant Back System from A. R. Wood will deliver extra net profit from the day it's installed. Here's why: □ The extra equipment costs are offset by savings in building costs (in new construction). □ There's no increase in operating cost, no extra feed. □ The Reverse Cage delivers fewer cracked eggs. □ Slant back design eliminates the need for dropping boards and dropping board scrapers. □ The Northco® Core Auger mixes the feed as it moves, to prevent feed separation. □ There's only a 2" setback per tier, so there's easy access to all levels.



#### NORTHCO® 4-DECK PLANNING SHEET

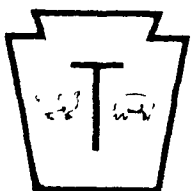
FOUR DECKS — REVERSE — SLANT BACK CAGES		4 hens per 18"x12" cage 54" Long Sections		21.33 hens/foot/row Row width—52" (Rail to Rail)		
		24 cages/section/row 96 hens/section/row				
Rows	House Width	Rail to-Rail Aisle Width	Hens/ft Of Row	Hens/54 Of Row	Hens/450 Row 100-54' sections	Hens/500 Row
1	10'	28	21.33	96	9,600	10,666
2	16'	25.3	42.66	192	19,200	21,333
3	22'	24	64	288	28,800	32,000
3	24'	30	64	288	28,800	32,000
4	30'	28	85.33	384	38,400	42,666
5	36'	26.7	106.66	480	48,000	53,333
6	42'	25.7	128	576	57,600	64,000
6	44'	29.1	128	576	57,600	64,000
7	50'	28	149.33	672	67,200	74,000
8	56'	27.1	170.66	768	76,800	85,333
9	62'	26.4	192	864	86,400	96,000
10	70'	28	213.33	960	96,000	106,666



END VIEW

**SEE IT FOR YOURSELF!**  
**OPEN HOUSE - JUNE 13, 1978**  
**AT THE KENNETH KEENER FARM**

# THOMAS FARM SYSTEMS, INC.



57 W. MAIN ST., LEOLA, PA. 17540

JIM THOMAS

PHONE: (717) 656-2677

