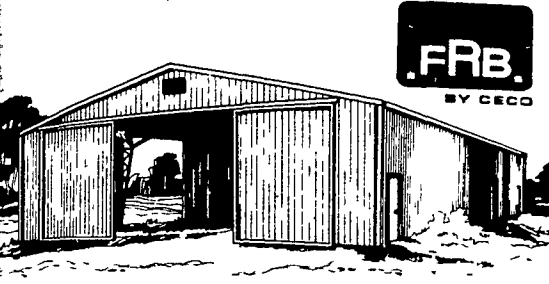


Own the best...  
**FARM-RITE BUILDINGS**  
Steel frames on concrete piers  
make the difference!



- Steel where steel is needed, wood where wood serves best
  - Standard widths 60, 50, 40, 30 Any length
  - All usable space, floor to roof, no truss interference
  - Strong steel roofing and siding with baked-on enamel in colors
  - Completely new ALL-STEEL sliding door won't warp
  - Backed by 60 years of Ceco engineering experience
- Let us show you a FARM-RITE BUILDING

**OUR SYSTEMS BUILDERS**  
POLE BUILDINGS • STEEL & WOOD BUILDINGS  
STEEL COLUMN BUILDINGS • MATERIAL • ERECTION  
JOSEPH ZAWADA R D 2  
215/756 6801 KEMPTON PENNA 19529

## Egg conference

(Continued from Page 1)

acquaint you with the goals and accomplishments of NEMA and UEP. Your input will be welcome and we hope that you will draw long-term directions from the meeting."

"UEP," he continued, "speaks for egg producers with a special authority. It is the only national organization whose interest is concerned solely with the economic well-being of the egg industry."

A greeting to the guests by Don Horn, vice president of Pennfield Corporation, will open the meeting. That will be followed by an update on NEMA activities from Bill Rent and Charles O'Reilly.

Ms. Christine Bushway, coordinator of promotions for the American Egg Board in the Northeast, will detail the phases of the AEB's

efforts to move more eggs to consumers.

Highlight of the meeting will be a talk by Greg Murch, director of marketing for UEP and architect of the UEP's egg export program. He will discuss Washington's political scene, touching on those subjects in particular which are pertinent to the egg industry. In addition, he will relate UEP's plans on how to offer a comprehensive cooperative program for farm insurance to members.

Summarizing the session, Al Wenger of Dutchland Farms will outline the role that NEMA, the other regionals, and UEP can play in making egg production a strong, well-knit segment of American agriculture.

Anyone who owns a laying flock and has not received an invitation to the June 20 meeting is asked to mail a

## Pa. has most hog packers

HARRISBURG — In 1977 there were 258 federally inspected plants which killed hogs in Pennsylvania. This was the largest number of hog packers listed by any state. The second highest number was 113 reported by Missouri. Iowa listed only 25 plants but 18.6 million hogs were slaughtered giving an average of 740,000 hogs slaughtered per plant in Iowa in 1977.

A further breakdown by size in Pennsylvania reveals some interesting information. There were 213

card requesting further information. Correspondence should be addressed to NEMA, Box MM, Durham, N.H. 03824; or NEMA, 136 Haddon Avenue, Hightstown, N.J. 08520.

plants in the Commonwealth which slaughtered less than 1,000 hogs during the year. Thus, 82 per cent of the plants in the state accounted for less than two per cent of the total hog slaughter. There were 34 plants which slaughtered between 1,000 and 9,999 head, while 7 plants processed 10,000 to 99,999 head. All but four of the state's plants fall in these groups, but these 254 plants account for only 15 per cent of the state's slaughter. The four largest slaughter plants in Pennsylvania slaughtered 2.4 million hogs in 1977 — a shopping 85 per cent of the state total.



# CURTISS

**Distributors & Dealers**  
Serving Your Area:

**NEW JERSEY**

- FRANKLIN**  
Robert Kitchen  
(201) 827 4659
- PHILLIPSBURG**  
William Shandor  
(215) 253 2773

**PENNSYLVANIA**

- BERNVILLE**  
John Bickler  
(717) 866 6869
- ELVERSON**  
Mert Stroble  
(215) 286 9173
- HAMBURG**  
Doug Leshar  
(215) 562 3206
- LEBANON**  
Lyn Krissinger  
(717) 272 6824
- LYNDELL**  
William Downing  
(215) 942 2688
- McVEYTOWN**  
Jim Swigart  
(717) 899 7372
- MANHEIM**  
Cliff Gibble  
(717) 665 6858
- MIFFLINBURG**  
David Dietrich  
(717) 966 2438
- MIFFLINTOWN**  
John Zandt  
(717) 436 6386
- MILLVILLE**  
Don Harding  
(717) 458 5367
- ORWIGSBURG**  
Eugene Koch  
(717) 366 1131
- PETERSBURG**  
John Foster Jr  
(814) 667 3614
- QUARRYVILLE**  
Carl Boyan  
(717) 786 2645
- SCHWENKSVILLE**  
William Sharnline  
(215) 287 6500
- STEWARTSTOWN**  
Marvin Jones  
(717) 993 2281
- SUNBURY**  
Wilfred Deppen  
(717) 286 7290
- TOWANDA**  
Chas Robbins  
(717) 265 5026

- CURTISS SALES REP**  
Harold Steele  
202 E Julian Street  
Martinsburg, PA 16662  
(814) 793 3312
- DISTRICT SALES MANAGER**  
Bob Elliott  
87 Morninglory Lane  
Manheim, PA 17545  
(717) 665 6858

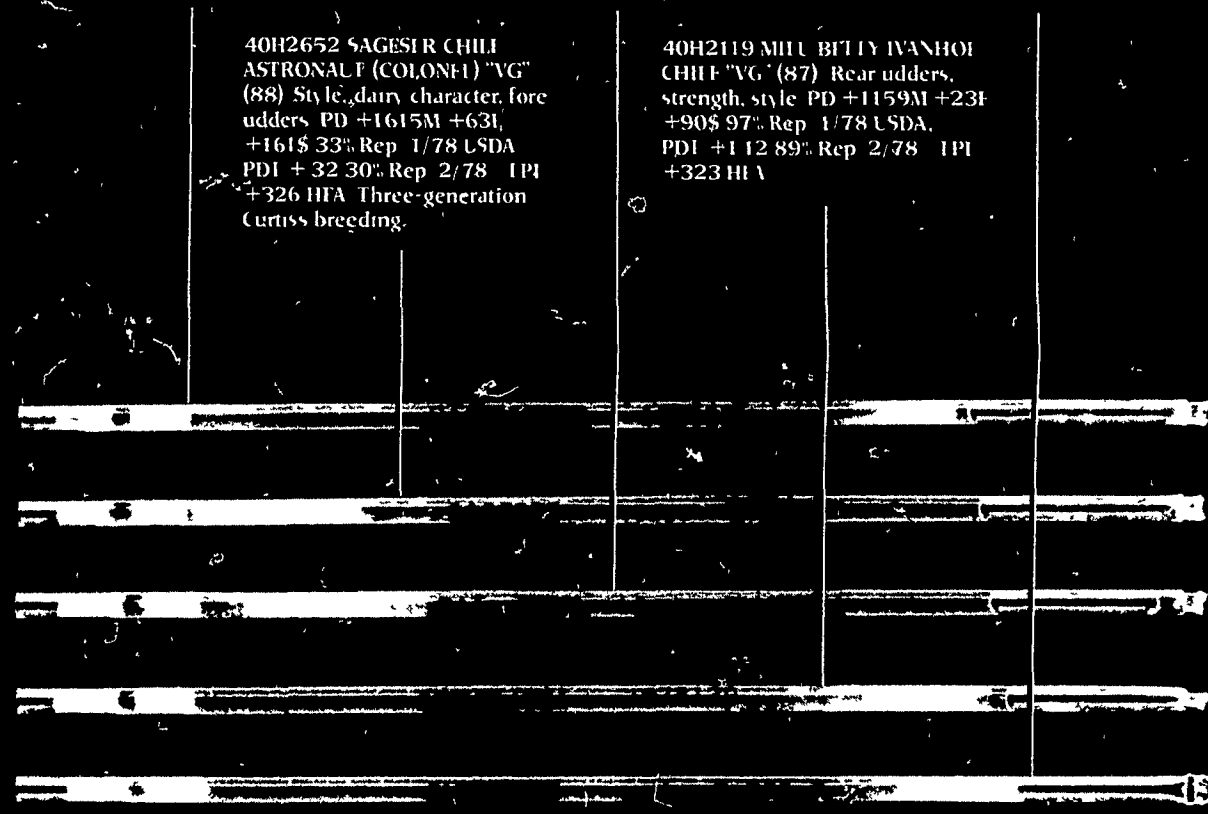
40H2518 RANSOM-RAIL  
PAULMAKER "VG" (87) Strength  
and balanced udders. PD  
+1679M +36F +145\$ 60% Rep  
1/78 USDA. PDI +112 44% Rep  
5/77 IPI +417 HFA.

40H2563 WILCOXVIEW  
PREFORMER PAULWIN "FX"  
(90) Clean bone and strong  
PD +1531M +36F +125\$  
37% Rep 1/78 USDA. PDI =.17  
31% Rep 10/77 IPI +261 HFA

40H2288 DIWA-SIE CARLJO  
CHIEFTAIN "LN" (90) Strength,  
style, legs. PD +1099M +49F  
+116\$ 51% Rep 1/78 USDA  
One of the breed's best test  
improvers

40H2652 SAGESIR CHILI  
ASTRONALF (COLONF1) "VG"  
(88) Style, dairy character, fore  
udders. PD +1615M +63F  
+161\$ 33% Rep 1/78 USDA  
PDI +32 30% Rep 2/78 IPI  
+326 HFA Three-generation  
Curtiss breeding.

40H2119 MILL BITTY IVANHOE  
CHIEF "VG" (87) Rear udders,  
strength, style. PD +1159M +23F  
+90\$ 97% Rep 1/78 USDA.  
PDI +112 89% Rep 2/78 IPI  
+323 HFA



## THE STRAWS THAT ARE BREAKING MILK PRODUCTION BARRIERS.

No doubt about it. You've made great strides in building your herd's production. Even if average, your herd's milk production has probably doubled in the last two decades. And you're looking for more.

We're ready to take you much further, and faster. Curtiss stands ready now with the Holstein sire power to help you break your genetic barriers with every crop of replacements. To help you reach greater milk and butterfat levels, and send you to the bank with more profit.

How? Just look at the sire summary data of these five Curtiss sires. Here's the kind of PD Milk, PD Butterfat, and PD \$ that can put most any herd into a totally new profit picture.

Sure you've seen high production figures on sires from other sources. But you'll note that Curtiss sires offer something more: *total performance*. Not only high milk and butterfat production but also style, dairy character, udder strength and balance, and other traits that contribute to higher production and reproductive efficiency. These

too add up to more dairy income. So go ahead. Shoot for higher milk production. Do it with Curtiss sires and watch your herd take on the advanced look of high production and superior type.

Call your Curtiss distributor today. Or call us.



**Curtiss Breeding Service**

SEARLE Division of Searle Agriculture Inc  
312-639-2141 • Cary, IL 60013

Taking you to the top.

# CURTISS

WORLD DAIRY FOUNDED  
**CURTISS CLASSIC**  
OCTOBER 4, 1978  
DUNDEE, ILLINOIS

