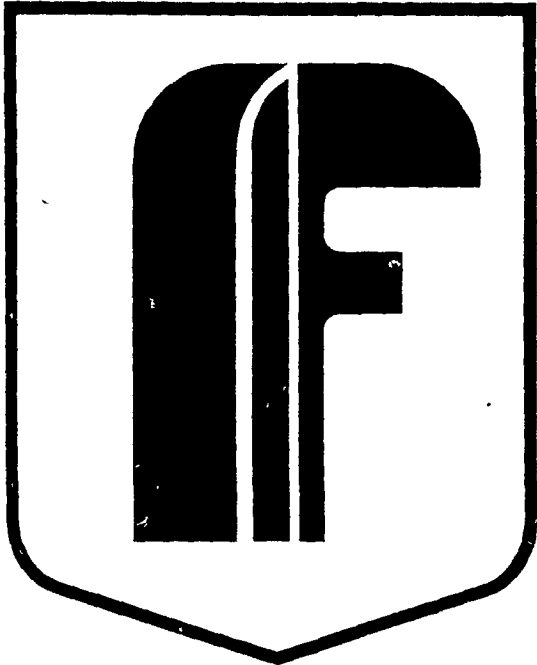


FAVORITE



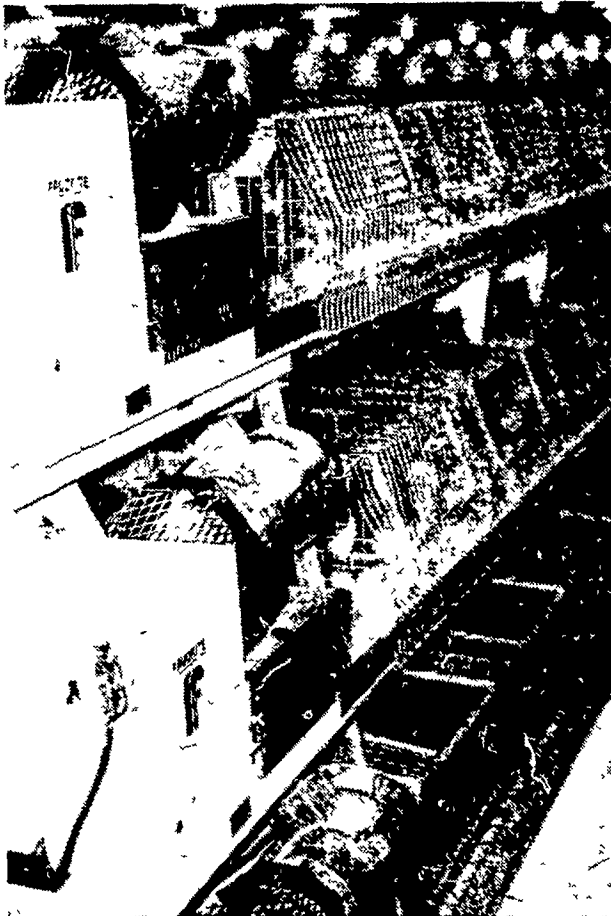
LIFESTYLE SYSTEMS

FAVORITE MFG., INC.

New Holland, Pa. 17557 USA

POULTRY EQUIPMENT

LOCALLY MANUFACTURED BY EXPERIENCED PEOPLE

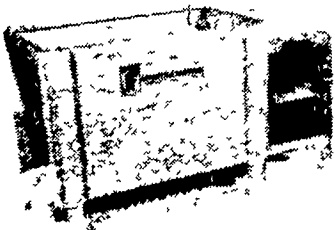


FAVORITE START GROW SYSTEMS

FEATURES:

- Double galvanized back-bottom.
- Unique start-grow cage front design.
- Start-grow cage bottom with 1" x 1" wire.
- Grow cage bottom with 1" x 2" wire.
- Start-grow cages notched for waterers.
- Start-grow cage waterers adjustable from outside of cage.
- Swinging cage doors lock open or closed.
- Partitions designed to eliminate bird movement between cages.
- Galvanized feed-saver chick guard.
- Flat chain and trough feeding.
- Feeding speeds up to 60 feet per minute.
- Hi-Torq speed reducer with three year warranty.
- Adjustable positive-lock hopper feed gate.
- Positive feed return to feed hopper.
- Rugged feed-chain corner assemblies.
- Unique feed manifold.
- Works well with heating system of your choice.
- 24" wide, 26" deep, 14" high.
- 30" wide, 26" deep, 14" high.

FAVORITE FLOOR FEEDING SYSTEMS



- Designed for single and multiple circuits.
- Hi-Torq speed reducer with three year warranty.
- Flat feeding chain speeds up to 60 feet-per-minute.
- Positive feed return to feed hopper.
- Adjustable, positive-lock hopper feed gate.
- Several feed saving trough designs.
- Anti-roost grill for feed troughs.
- Mini 1- and 2-line hoppers for suspended feeding systems.
- Standard 1-, 2-, and 4-line hoppers, with adjustable legs.

FAVORITE "CAL-AIR" CAGE SYSTEMS

FEATURES:

- Shallow (reverse) cage design.
- 4-Deck or 3-Deck configurations.
- No dropping boards or scrapers required.
- Double galvanized back-bottom-egg tray.
- Cages with angled fronts.
- Cage doors in front.
- Bottom partition wire is welded to precise slope of cage bottom.
- Flat chain and trough feeding.
- Feeding speeds up to 60 feet per minute.
- Hi-Torq speed reducer with three year warranty.
- Adjustable, positive-lock hopper feed gate.
- Positive feed return to feed hopper.
- Rugged feed-chain corner assemblies.
- Unique feed manifold.
- Simplified egg collectors.
- Flexible egg collector cups.
- 12" egg collector cross-belt.
- Cross-belt runs underneath egg collectors.
- Easy access to all decks.
- Floor stand or hanger support systems.
- 12 inches deep in various widths.



**FOR BETTER INVESTMENT AND LARGER PROFITS ...
CHOOSE THE FAVORITE WAY!**

**FAVORITE ...
AN EXPERIENCED COMPANY
WITH QUALITY PRODUCTS.**



**AUTHORIZED DISTRIBUTOR
EBERSOLE EQUIPMENT
& SUPPLY COMPANY
MANHEIM, PENNSYLVANIA
(717) 665-6861**