

# ANNOUNCING

# QUEEN ROAD REFRIGERATION

IS NOW AN AUTHORIZED DISTRIBUTOR FOR



## "THE DIESEL WITH A DIFFERENCE"

Cuts your power costs because it's way ahead of its time on all points.

AVCO-VM diesel engines are world-proven money-savers. They deliver maximum power efficiency immediately, under any sudden load or climate variation. Their higher power to weight ratios mean NO REDUCTION IN HORSEPOWER to qualify for pollution standards.

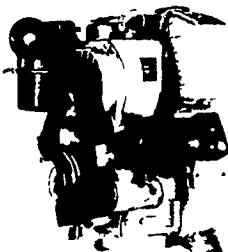
They're stingy on fuel, too. Many users report fuel consumption CUT IN HALF — and more — compared with gasoline engines. In some installations, our diesels are delivering more than

TWICE the hours of operation per gallon of fuel.

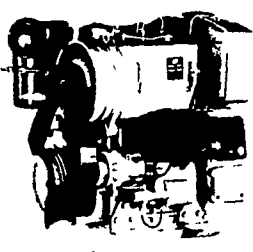
Faultless performance is the norm, rather than the exception. A choice of 27 premium quality air-cooled Avco-VM's (5 to 670-hp) means there's one that's right for your application.

Modular, unitized construction means fewer specialized parts, lower weight per hp, lower maintenance costs, 70% parts interchangeability — and they'll fit the tightest space.

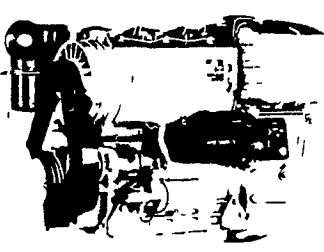
### 1050 SU SERIES



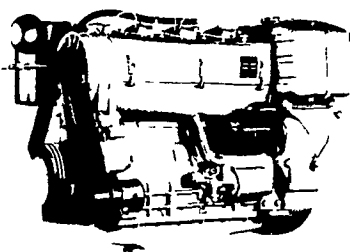
2800 R.P.M.  
22 SAE HP  
20 DIN HP



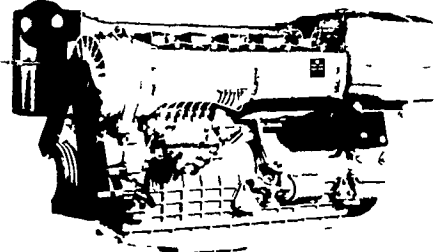
2800 R.P.M.  
44 SAE HP  
40 DIN HP



2800 R.P.M.  
66 SAE HP  
60 DIN HP

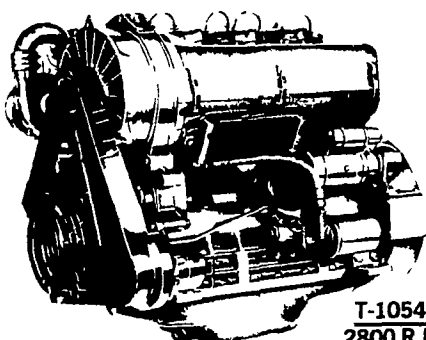


2800 R.P.M.  
88 SAE HP  
80 DIN HP

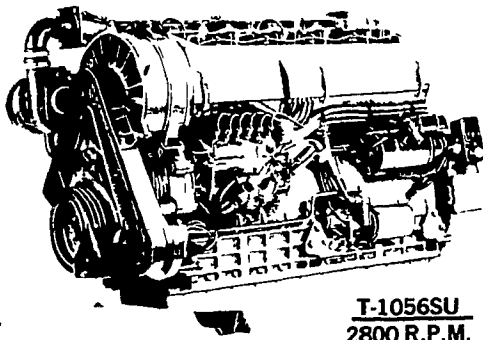


2800 R.P.M.  
132 SAE HP  
120 DIN HP

### T 1050 SU SERIES

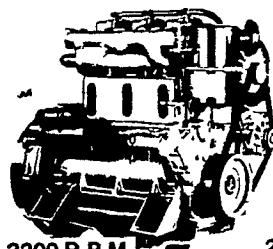


T-1054SU  
2800 R.P.M.  
106 SAE HP  
98 DIN HP

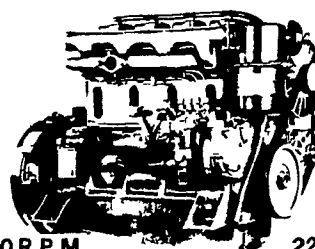


T-1056SU  
2800 R.P.M.  
160 SAE HP  
147 DIN HP

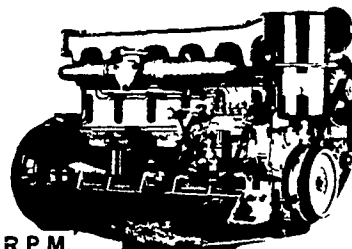
### DAN SERIES



2200 R.P.M.  
79 SAE HP  
72 DIN HP

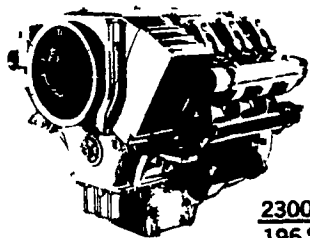


2200 R.P.M.  
105 SAE HP  
96 DIN HP

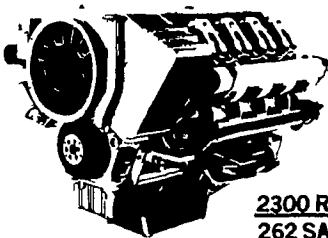


2200 R.P.M.  
155 SAE HP  
144 DIN HP

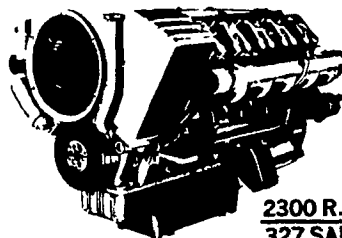
### 1300V HEAVY DUTY SERIES



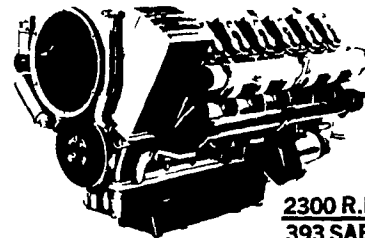
2300 R.P.M.  
196 SAE HP  
180 DIN HP



2300 R.P.M.  
262 SAE HP  
240 DIN HP

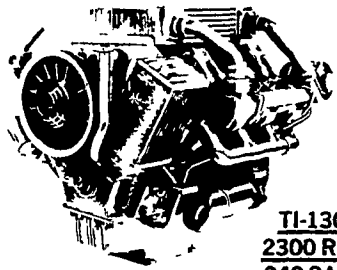


2300 R.P.M.  
327 SAE HP  
300 DIN HP

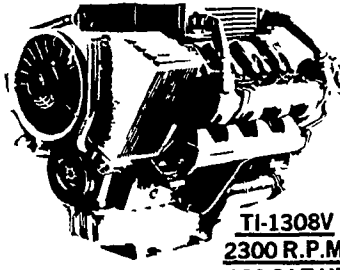


2300 R.P.M.  
393 SAE HP  
360 DIN HP

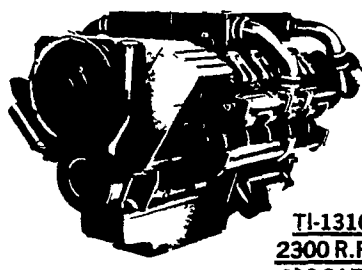
### TI 1300v SERIES TURBOCHARGED



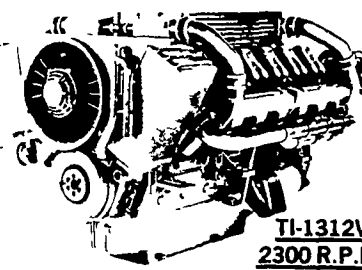
TI-1306V  
2300 R.P.M.  
240 SAE HP  
225 DIN HP



TI-1308V  
2300 R.P.M.  
320 SAE HP  
300 DIN HP

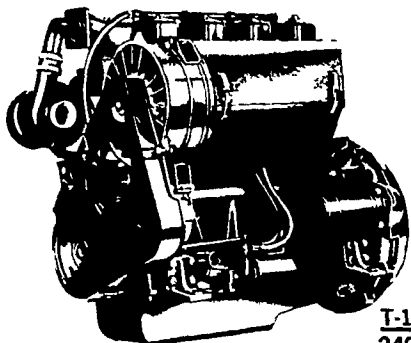


TI-1310V  
2300 R.P.M.  
400 SAE HP  
375 DIN HP

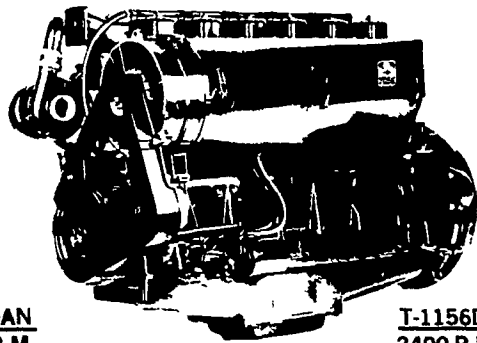


TI-1312V  
2300 R.P.M.  
480 SAE HP  
450 DIN HP

### T 1150 DAN SERIES TURBOCHARGED



T-1154DAN  
2400 R.P.M.  
128 SAE HP  
115 DIN HP



T-1156DAN  
2400 R.P.M.  
190 SAE HP  
172 DIN HP

**THE "RIGHT FROM THE START"**  
DIESEL ENGINE LINE FOR FAULTLESS PERFORMANCE.

# QUEEN ROAD REFRIGERATION

BOX 67, INTERCOURSE, PA. 17534

PHONE: 717-768-9006

AFTER 5 PM — JOHN D. WEAVER 768-8355

Gid Dienner 768-8521

Sam Stoltzfus 768-3594

Or Answering Service 354-4374

**24 HOUR SERVICE**