

SPECIAL ON McCURDY 8 & 10 TON WAGON GEARS



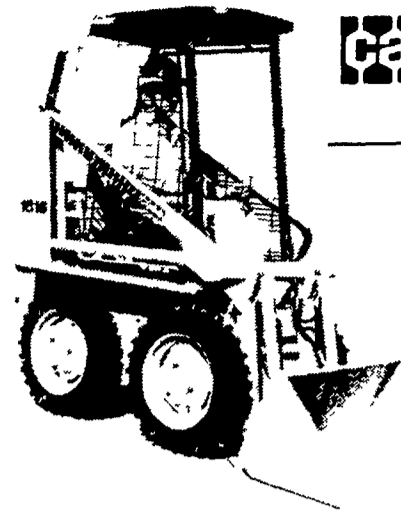
◀ Tongue swings a full 180°, eliminating broken or bent tongues while letting you turn sharper, on standard 7 and 10 ton gear.

8 TON
With Extendable Hitch
6", 8" or 10" Rims
YOUR CHOICE

\$435 Not Set Up

10 TON
With Extendable Hitch
6", 8" or 10" Rims
YOUR CHOICE

\$495 Not Set Up



case SKID LOADER

**MANURE
LOADING
SEASON
IS HERE -**

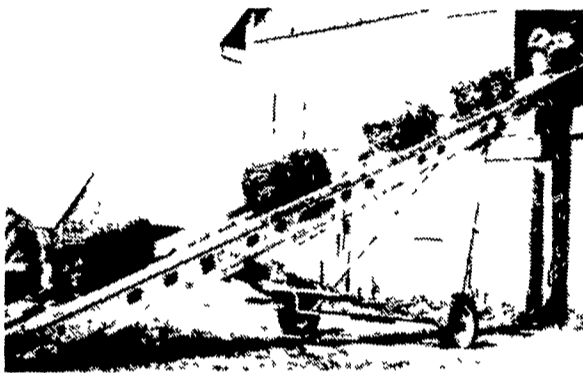
**SEE US
FOR
YOUR
LOADER
NEEDS**

WE HAVE UNITS IN STOCK & READY TO GO.

- Case 1845 Diesel, 45 H.P.
- Case 1830, 32 H.P.
- Case 1845 Gas, 45 H.P.
- Case 1816, 16 H.P.

DISCOUNTS UP TO \$1000
**DON'T WAIT - YOU NAME THE TIME
& PLACE - WE ARE READY TO GO!**

HEAVY DUTY PORTABLE ELEVATORS BY SPEED KING



**31, 36 & 41 ft. IN STOCK
SET UP & READY TO GO**

With Heavy Duty No. 62 Chain & Shovel Hopper

NEW GEHL® EQUIPMENT

IN STOCK

- ★ 7 & 9 ft. Mower conditioners
- ★ 12 ton Tandem Axle Running Gear
- ★ Model 1500 Round Baler Ideal for Hay
- ★ Model 95 Grinder Mixer 3 pt. hitch bale carriers
- ★ Forage Boxes
- ★ Forage Harvesters
- ★ High Capacity Blower w/twin rotor

BUSH HOG ROTARY CUTTERS

★ 3 pt. hitch
5 & 6 ft.
Models In Stock.

Dunham 3 pt. hitch
4-row cultivators
w/shields, each gang
is independent with
its own gauge wheel.
Made for high
speed cultivation.

NEW GEHL MODEL 640 FORAGE BOX

Heavy duty continuous drive, 16' long 6' sides w/roof & 3 beaters, mounted on Gehl heavy duty 12 ton tandem axle running gear w/12Lx15 ply flotation tires & extendable hitch.

ALL THIS FOR ONLY

\$3900⁰⁰

USED FORAGE BOXES WHILE THEY LAST!

- (2) Gehl 810, 6 x 16 w/2 beaters w/rear unload, 10 ton running gear **\$2500**
- Gehl 910, 6 x 14 w/3 beaters **\$2500**
- NH 6 x 16 w/3 beaters, roof & auger, unloading conveyor, running gear w/11Lx15 tires **\$1900**
- New Gehl Model 630, 6 x 14 box, w/3 beaters on heavy duty 8 ton running gear, w/11Lx15 tires and extendable hitch **\$2700**

CENTURY SPRAYER

- 21 Ft. Boom
- 300 gal. Tank
- Deluxe Trailer
- Centrifugal Pump
- Agitator
- PTO Drive

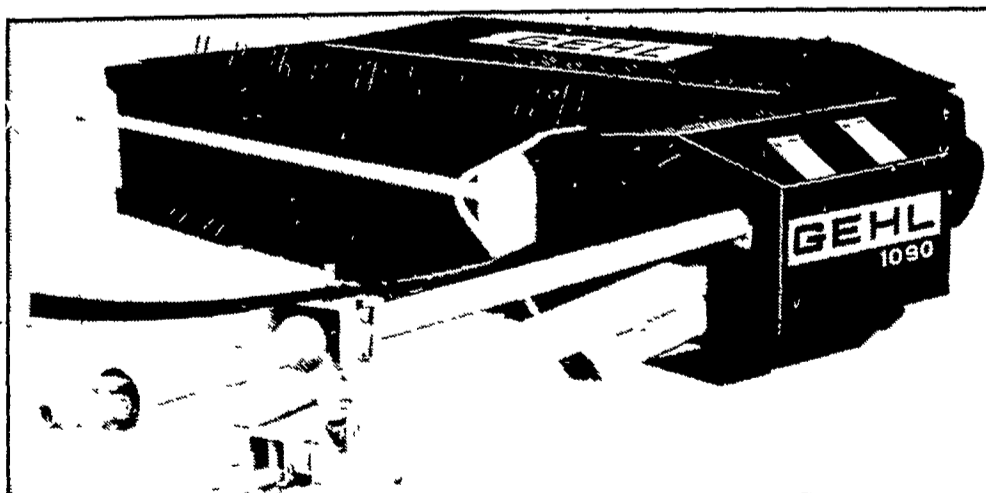
1 ONLY

\$1185⁰⁰

THE
ALL
NEW

GEHL® FARM EQUIPMENT MOWER CONDITIONER

CALL FOR A FIELD DEMONSTRATION. WE ARE READY TO SHOW YOU WHAT A GEHL MACHINE CAN DO.



IN STOCK

No matter what your farm operation, Gehl has equipment to save you time, effort and money

NEW TRACTORS

- Case 2670 4-wheel drive, cab, air, heat, PTO shaft, power shift transmission
- Case 1370 power shift trans, cab, air, heat
- Case 1175, w/cab, air & heat
- Case 970, no cab, power shift
- Cas 1410 hydra shift trans, 80 HP
- Case 995 Syncromesh Diesel
- Case 885 Syncromesh Diesel

USED TRACTORS

- New Holland S P w/hay pickup Model 1800 G M Diesel hydrostatic drive w/3-row narrow corn head
- Case 930 Comfort King Diesel Tractor, wide front
- 430 Case Diesel
- Case 580 Industrial Diesel Loader Tractor w/power shuttle, no PTO or hitch but a heavy duty loader tractor
- Gehl Model 115 Grinder Mixer

NEW PICKUP TRUCK TIRES

- (2) 8 75x16 5 Mud & Snow Dayton tractionite, \$59.00 ea.
- (2) 7 50x16, 8 ply, Jetson mud & snow, \$57.00 ea
- (4) 10-15 All Terrain B F Goodrich, 4 ply, load range B, \$63.00 ea.
- (4) 10-15 All Terrain B F Goodrich, 4 ply, load range C, \$67.00 ea.

NEW

SKID LOADER TIRES

1200x16 5 lug type Call
1000x16 5 lugs with tubes,
\$65.00 ea

NEW FRONT TRACTOR TIRES

- 500x15, 4 ply \$19.00
- 550x16, 4 ply 25.00
- 400x19 29.00
- 9 5Lx14, 6 ply 39.00
- 650x16, 6 ply 29.00
- 600x16, 6 ply 25.00
- 9 5Lx15, 6 ply 43.00
- 11Lx15, 6 ply 78.00
- 11Lx15, 8 ply 89.00
- 10 00x16, 6 ply 58.00
- 11 00x16, 8 ply 75.00
- 7 5Lx15, 6 ply 32.00

- Specials - 11Lx15 8 ply flotation tires \$35
- 12Lx15 8 ply flotation tires \$43

TRUCK SPECIAL

iH Truck Tractor w/5th wheel single axle 1967 model in good cond 220 Cummings and 10 speed Road Ranger

NEW SKID LOADERS

- 1845 Hydra Diesel
- 1830 Hydra Gas, 32 HP, 60" wide
- 1816 Hydro, Gas, 16 HP

USED SKID LOADER

Case 1816, 16 H P
Hydraulic Augers
To Fit On Gravity Bins
Ideal For Small Grain
& Fertilizer Handling

CAR TIRES

- (2) FR78x14 General Jetson, steel belted radials, \$37.00 ea.
- (2) FR78x14 steel belted radials, mud & snow grip, \$46.00 ea.
- (2) GR78x14 steel belted radials, mud & snow grip, \$47.00 ea.

USED

TRACTOR TIRES

- 2-18 4x34, 6 ply, \$35.00 ea.
- 15 5x38, 6 ply, \$15.00 - 1 only
- 14 9x28, 6 ply, B F Goodrich Silvertown, \$25.00

NEW

TRACTOR TIRES

- The all new B.F. Goodrich Radial Rear Tractor, 18.4x34...\$389
- 12 4x38, 4 ply, B F Goodrich, \$98.00 - 1 only
- 9 00x38, 4 ply, \$69.00 - 1 only
- 1 pr 20 8x38, 8 ply, B F Goodrich Silvertown, mounted on McCurdy clamp on dual with all the hardware, \$1485 for pair
- New 20 8x38 8 ply rear tractor, Goodyear, \$430.00 ea
- Rear Tractor 16 9x30, 6 ply- Firestone or Goodyear Torque grip, your choice, \$150.00
- Rear Tractor - 14 9x28, 6 ply w/tubes Goodyear power torque, \$162.00
- Rear Tractor - 15 5x38, 6 ply Sevierling, \$165.00
- 15 5x38, 8 ply, General deep lug, \$185.00
- 18 4x38, 6 ply, Goodyear power torque, \$255.00
- 20 8x34, 8 ply, Goodyear power torque w/tubes, \$385.00
- 18 4x26, 6 ply, Goodyear traction torque, \$189.00
- 17 5Lx24, 8 ply, tubeless industrial, \$192.00
- 8 00x16, 2 ply, Goodyear Sure Grip rear tractor, \$35.00
- 13 6x28 6 ply Firestone Field & Road, \$125.00
- 16 9x24, 8 ply Industrial, \$239.00
- 14 9x38, 6 ply Sevierling, \$149.00
- 12 4x28, 6 ply Firestone All Traction, \$115.00

BUSINESS HOURS:
Mon.-Fri. 7-5
Sat. 7-11:30



BINKLEY & HURST BROS.

133 Rothsville Station Rd., Lititz, PA. 17543 Ph: (717) 626-4705