

## Farm Women Societies

(Continued from Page 56)

Speaker for the day was Mrs. Ida Risser who spoke on travel in Pa. in the early days.

### Lancaster Co. Society 3

Members of Lancaster County Farm Women Society 3 were entertained on May 21 at the Coca Cola auditorium in Lancaster.

Mrs. Suzanne Hoffman was hostess.

The business meeting was conducted by president Mrs. Miriam Moore. A contribution of \$50 was given to the Cerebral Palsy fund. Also, \$200 was given to help defray the cost of a wheel chair used locally.

Fifteen members of the group attended the Spring Rally held at the Hershey Convention Center.

Members of Society 3 will

conduct a day camp in August as their state project.

The program was a slide presentation of a trip to Africa by Mr. and Mrs. Earl Stauffer.

Next meeting will be June 17 at Salem Lutheran Church, Ephrata.

### Lancaster Co. Society 5

Twenty-seven members and one guest attended the meeting of Lancaster County Farm Women Society 5. The recent meeting was held at the home of Mrs. Paul Neff, with Mrs. Clyde Weaver hostess and Mrs. Charles Forney co-hostess.

During the business meeting, final plans were made for a one day trip to the Poconos on June 14.

Speaker for the meeting was Dan Fitzkee, Manheim, whose topic was bees.

The next meeting will be a progressive party on June 24 at noon. The homes of Eileen Bruckhart, Pauline Longenecker, Sandy Yocum, and Esther Graybill will be visited.

### Lancaster Co. Society 8

On May 20, Lancaster County Farm Women Society 8 met at the home of Grace Bixler, Marietta R1. Kathryn Heisey, president, presided over the meeting.

Barbara Walsh, Pennsburg R1, presented the special feature of the afternoon. She and her husband had spent a year at the John McCurdy Mission School in Espanola Valley, New Mexico. She told of her

experiences there and showed several tapestries which she had made.

Nine members visited Conestoga View recently. Twelve members attended the Spring Rally.

A representative of the Mount Joy Fire Company showed photographs and drawings of the proposed new firehouse facility.

Hostesses providing refreshments were Grace Bixler, Ruth Drager, Anna Wolgemuth, Helen Wivell, and Hettie Ginder.

Mrs. John Wenger, Manheim, will present chalk drawing at the next meeting which will be held on June 15, at the home of Vera Frey, Marietta. The meeting will begin at 7 p.m. Society 28 will be entertained.

### Lancaster Co. Society 9

The home of Mrs. Margaret Hagen, Rawlinsville, was the setting of Lancaster County Farm Women Society 9's recent meeting. Mrs. Margaret Kreider and Mrs. Mary Brinley served as cohostesses.

Program for the afternoon was Robert Shoff, from the Millersville World Wide Traveler for Education. He showed slides from a trip he and group from Kent University took to Cuba.

The June meeting of the group will be held with Mrs. Helen Eshleman from York County. It will be a covered dish luncheon at her home. Members are asked to bring folding chairs.

### Lancaster Co. Society 14

Lancaster County Farm Women Society 14 met at the Strasburg Presbyterian Fellowship Hall on May 16. Hostesses were Mrs. Martha Herr, Mrs. Miriam Groff, and Mrs. Serena Groff.

The program was given by Francois Geanett, an exchange student from the French speaking part of Switzerland.

The next meeting will be June 14 when the group will meet at the Strasburg Mennonite Church and travel as a group to Village Green to play miniature golf.

## Quick 'n' Easy

9433 34-48



7106

Turn terrycloth towels into decorative kitchen aids! Applique vivid tulips and crochet borders of bedspread cotton for potholders, apron, button on towel of terry cloth scraps Pattern 7106 directions and tulip pattern

Softly ruffled dress jacket Printed Pattern 9433 Women's Sizes are 34" (38 inch bust with 40 inch hip) 36 (40 bust, 42 hip), 38 (42 bust, 44 hip), 40 (44 bust 46 hip), 42 (46 bust 48 hip) 44 (48 bust, 50 hip) 46 (50 bust, 52 hip), 48 (52 bust 54 hip)

Very soft dressing is news now with niceties like elasticized gathers at the waist soft shoulder shaping and a tabbed zip up neckline Printed Pattern 9166 Misses Sizes 8 10 12 14 16 18 20 Size 12 (bust 34) takes 2 1/2 yards 54 inch fabric

9166 8-20

\$1.50 for each pattern Add 35¢ for each pattern for first-class airmail handling Send to QUICK and EASY PATTERNS 170 232W 18 St New York NY 10011

Fashions to Sew (S/S)	75¢
1978 Needlecraft Catalog	75¢
Designer Collection #33	75¢
Petal Quilts	\$1.50
Thrifty Crafty Flowers	1.50
Easy Gifts 'n' Ornaments	1.50
Pillow Show Offs	1.50
Stuff 'n' Puff Quilts	1.25
Stitch 'n' Patch Quilts	1.25
Crochet with Squares	1.00
Crochet a Wardrobe	1.00

Add 25¢ each book for postage handling

## WHITE WASHING with DAIRY WHITE

- DRIES WHITE
- DOES NOT RUB OFF EASILY
- NO WET FLOORS
- IS COMPATIBLE WITH DISINFECTANT AND FLY SPRAYS
- WASHES OFF WINDOWS & PIPELINES EASILY.

### ALSO BARN CLEANING SERVICE AVAILABLE WITH COMPRESSED AIR

To have your barn cleaned with air it will clean off dust, cob webs & lot of the old lime This will keep your barn looking cleaner & whiter longer

#### MAYNARD L. BEITZEL

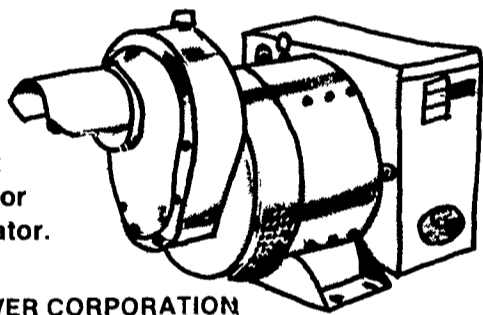
Witmer, PA 17585 717-392-7227  
If no answer call Willard Beitzel 717-656-9569

Barn spraying our business, not a side-line  
Spraying Since 1961

### HIGH PRESSURE WASHING AND DISINFECTING POULTRY HOUSES AND VEAL PENS.

## Tractor Driven Alternators!

Protect your farm against costly power failure. Buy or lease a Winpower Alternator.



WINPOWER CORPORATION  
NEWTON, IOWA 50208

Write today for more information

**MARVIN HORST**  
Lebanon, Pa  
717-272-0871

**AL MAURER**  
Cambra, Pa  
717-864-3135

**BOB SWANSON**  
Kennett Square, Pa  
215-444-5610

## How customers can mow their acreage or yard, smooth, fast and easy!

The grass can be greener on your customers side of the fence when they mow with WOODS handy rear-mount mowers!

WOODS convenient rear-mount 3 point hitch hook-up is both fast and safe 'freed' the tractor for other jobs between mowings. Choice of four cutting widths 3 1/2 4 5 and 6 feet mow up to three acres per hour. Models for tractors rated from 12 to 40 HP with Category '1' or '0' 3-point-hitch WOODS is the world's largest

manufacturer of tractor-powered rotary mowers with rear-mount and under mount designs for over 175 tractor models



Division of Hesston Corporation  
OREGON ILLINOIS 61061

Products backed by 31 years of dependable quality

## FARMERSVILLE EQUIPMENT INC.

RD4, EPHRATA, PA  
Phone: 717-354-4271

Store Hours:  
Mon., Tues., Wed., Fri.  
7:30 till 5:30;  
Thurs. till 9 PM;  
Sat. till 3.



### Lancaster Co. Society 19

Lancaster County Farm Women Society 19 met at the home of Mrs. Irvin Denlinger on May 13.

The group decided to make a contribution to the Cancer Society. It was also determined that group membership would be discontinued after an absence of six months.

The program was a series of pictures from Alaska and Hawaii. The shots had been taken by Mr. and Mrs. Denlinger on their recent trips to the two states.

### Lancaster Co. Society 31

The Lancaster County Farm Women Society 31 met at the home of Mrs. Kenneth Rutt on May 22.

A business meeting was held. It was decided that the group will donate \$50 to the Welsh Mt. Clinic.

Dr. Joseph Besecker spoke to the group on the behavior of toddlers.

The next meeting will be a family picnic on June 25 at 12:30 p.m., at Wenger's Park. Mrs. Ben Wenger will be hostess and Mrs. Victor

(Turn to Page 60)

## HIGH EFFICIENCY WOOD STOVES, WOOD FIRED CENTRAL HEATING SYSTEMS FOR HOME, FARM AND INDUSTRY.

CHIMNEY BRUSHES, FIREPLACE GLOVES, SPLITTING AXES, INSULATED PIPE. EXCELLENT GIFT ITEMS FOR THE WOOD BURNER.

DISTRIBUTED BY

## GLENWOOD STOVES

Route 1, Glenwood Drive  
Ephrata, Pa. 17522  
717-733-0703

Located 1 1/4 mile northeast of Green Dragon  
Free Literature  
Dealer Inquiries Invited