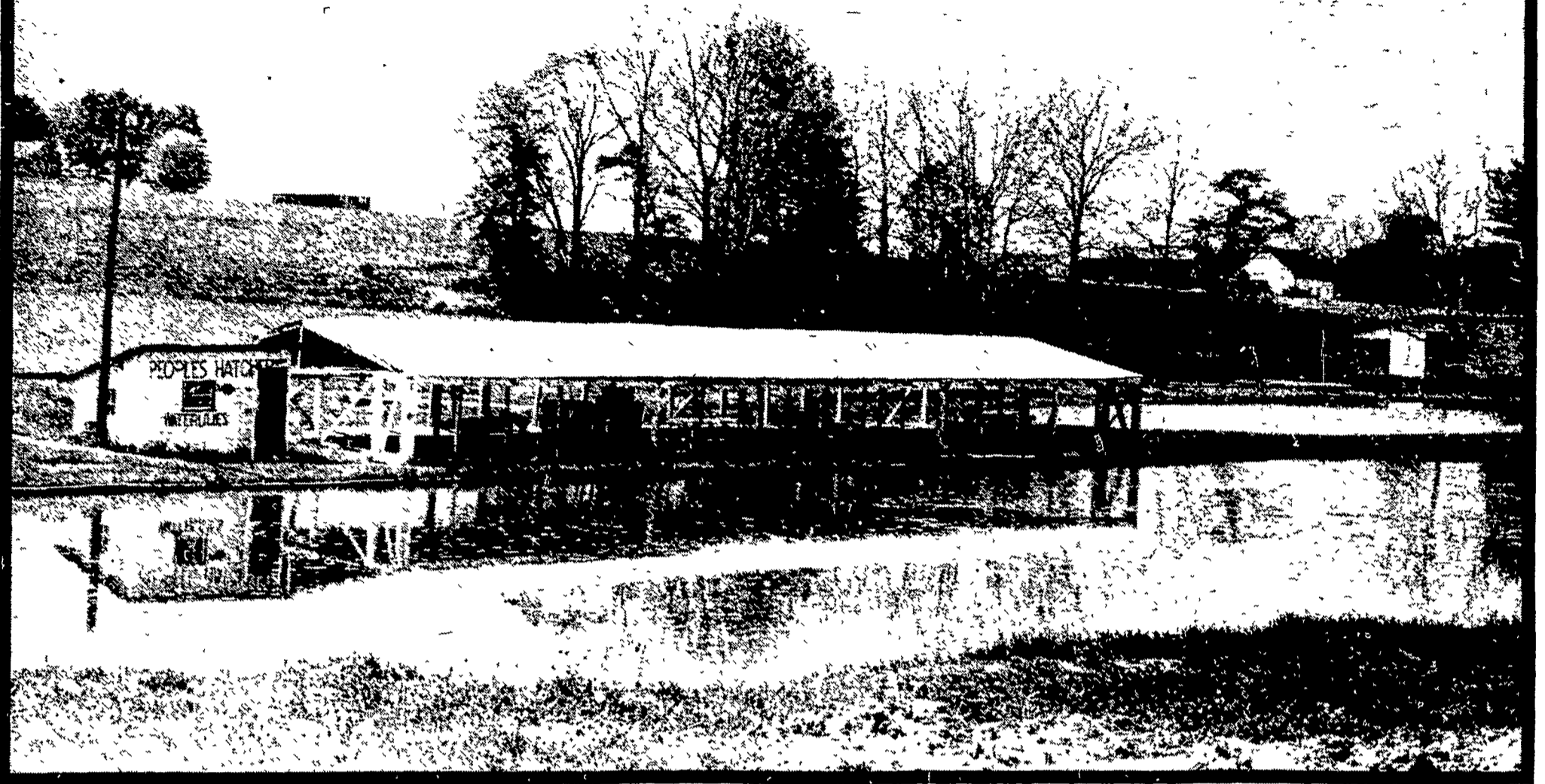


Goldfish abound at this fish farm



Seen at a distance, the ponds and shed of Peoples Hatchery look like this. In all, there are 20 acres with an underground creek water supply system to 50 plus ponds.

By SUSAN KAUFFMAN

NEW PROVIDENCE — Near the small village of New Providence in Southern Lancaster County at the intersection of Cinder Road and Main Street and several ponds scattered across a grassy meadow. Midst those ponds is one almost 100 years old. With that 98-year-old pond, Hiram Peoples' grandfather started a fish hatchery which now produces two and one half million goldfish per year.

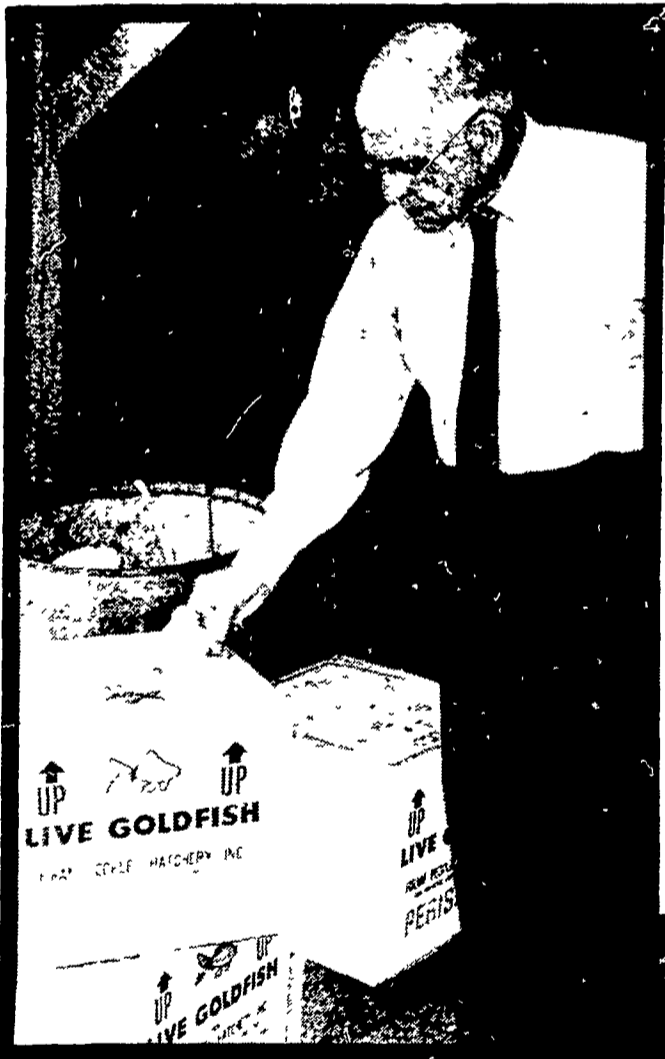
Who buys all these goldfish? Anyone who purchases these house pets from the major chains like K-Mart and Woolworth on the East Coast from Maine to Virginia. Peoples Fish Hatchery also markets its goldfish in London and Amsterdam, as well.

In addition to the raising of goldfish, Peoples' Hatchery also raises bluegills and bass for stocking farm ponds. More of the labor force at the hatchery, according to Hiram Peoples, is involved in the wholesale distribution of a complete line of pet supplies. The line includes almost everything from fish bowls to colored gravel, to wild bird seed to all types of pet bedding.

The present operator of Peoples Hatchery, Hiram Peoples, is an extremely energetic and busy 68-year-old man. Managing the diversified business which covers a number of states, as well as London and Amsterdam outlets, requires a quick mind and an agile body. Peoples says he learned the hatchery business from the family involvement and majored in economics in college.

Besides his full-time involvement in the business, Peoples was a justice of the peace for 30 years. After retirement from that position, he became a notary public

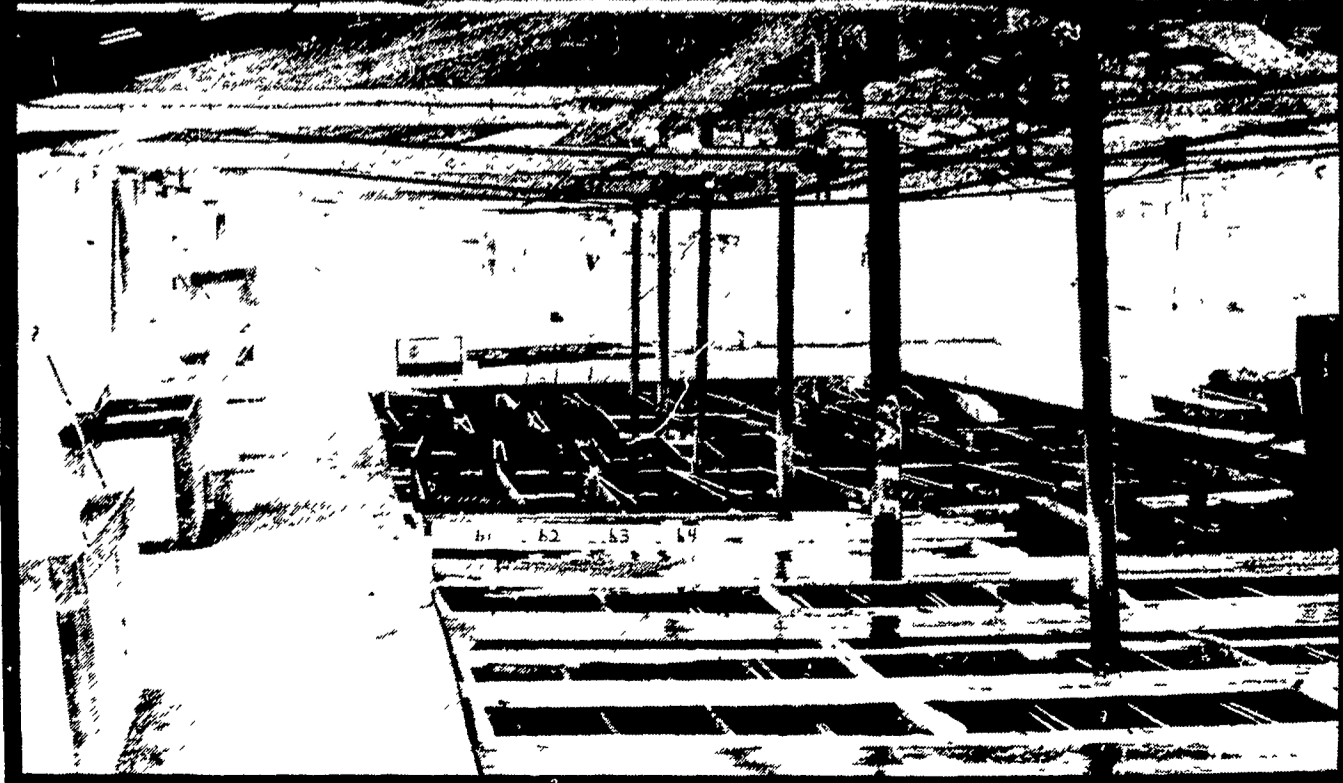
(Turn to Page 53)



Back at the warehouse, Hiram Peoples poses with cardboard boxes of goldfish. These are shipped locally by parcel post. The goldfish are housed in plastic bags inside the cardboard boxes.



Peoples displays a scoop net of goldfish varieties.



This shot shows the open air storage area with individual cages for types and individual orders. Shipment takes place at 3 a.m.

Homestead
Notes