

Livestock market and auction news

Philadelphia Fresh Fruit and Vegetable Report

Wednesday, May 24, 1978

FRUIT

APPLES: About steady. Controlled atmosphere storage. Ctn. Tray Pack. NY Red Delicious US Combination Ex. Fcy-Fcy. 88s 16.00 100s 15.50, 113s 15.00.

Ctn. Cell Pack. NY McIntosh US Combination Ex. Fcy-Fcy. 120s 16.00. Ctn. 12-3 lb. Film bag US Fcy. 2 1/4" & Up. NY Red Delicious 12.50-13.00 Romes 12.50 Staymans 13.00 McIntosh 10.50.

STRAWBERRIES: About steady. Calif 12-pint flats mostly med 4.20-5.40 fair appear 3-3.60 via air 8-8.40 one label lge 10.80-12.00.

VEGETABLES

ASPARAGUS: Supplies light. Pyramid Crates Loose Calif. lge. Long Green 23.00; NH Fieldrun bchd 22.00.

GREENS: About steady. Wirebound crt. approx. 1 1/2 bushel unless otherwise stated. GA bchd Collard 5.00. NC bchd Collard 6.00. VA bchd Kale 6.50. NJ bu. bkt loose Collard 5.00 Rape Turnip tops & Mustard 3.50-4.00. Dandelion 4.00 Broccoli Rabe 1-1/9 bu crt loose 3.00-4.00.

LETTUCE: Iceberg slightly higher. Calif ctn 24s 7.50-8.50 occ. high as 9.00 poorer cond. lower ctn. 30s 6.00 film wrpd standard ctn 7.50-8.00 lge ctn 8.50.

ROMAINE: About Steady. Calif ctn. 24s 9.00-10.00 fair qual. 7.00-8.00. NJ 1-1/9 bu. crt. & ctn. 4-4.50 few 5.00 fair appear 3-3.50.

BIG BOSTON: NJ Eastern Boston crt 24s 5-5.50 few 6.00.

BIBB: NJ 12-qt. bkt. 5-5.50.

LEAF: Calif. ctn. 16.00; NJ 4/5 bu. crt. 5.00-6.00 sml. crt. one lot 3.50.

MUSHROOMS: Higher. PA 4-qt. bkt med-lge 4.50-4.75 sml-med 3.50-3.75.

ONIONS-Dry, steady. 50-lb. sks US#1 or generally good quality yellow unless otherwise stated.

ONIONS-Green about steady. NJ 4/5 bu. crt. bchd 36s 6-6.50 fair cond 3.50.

POTATOES: Russets higher others about steady. 50 lb. sks US #1 Size A wshd unless otherwise stated.

Round Whites: Maine 3.25-3.50 mostly 3.25 few 3.00 lge 3.75-4.00. Baled 10-5 lb. film bags 4.95-5.00 5-10 lb. film bags 4.25-4.50. NY 2.75-3.00 lge. 3.75.

RADISHES, Steady Fla ctn. 30-6 oz. film bag Red 4.00-5.00 mostly 4.50. NJ lg bchd Red 24s 2.50-3.00, mostly 3.00 few 3.60.

RHUBARB: NJ ctn. bchd 24s 6.00 fair qual. cond. 2.40.

SPINACH: About steady. Bu bkt & 1-1/9 bu. crt. Savory Type VA fair qual. 4.00-5.00. NJ 7.50-8.00 fair appear 6.00-7.00.

TOMATOES: Steady Fla 30 lb. ctn. Sales By Repackers Pink-light red ex. lge 9.00-10.00. few 10.50 some 8.50 lge. 7.00-8.00 few 8.50 med. 6.00-7.00 sml. one lot 5-5.50 red ex. lge 7.00 lge. 6.00 med. 5.00 Sales By Others light red ex. lge. 8.50-9.00 lge. 7.00 med 4.00-5.00 sml 3.00.

East Coast Carlot

Princeton, New Jersey
May 24, 1978
Compared to Tuesday's

close: Pre holiday trading slow on most items as reported by USDA. Choice 3 steers generally steady in limited test. Prime special fed veal steady to 10.00 higher. Good and Choice boning veal steady to 4.00 lower. Spring lamb compared to last week's bulk steady to 1.00 lower. Fresh pork 14-17 lb. loins steady.

STEER BEEF

4 Loads

CHOICE 3 500-750 lbs. 93.25-95.00, generally steady.

PRIMAL BEEF CUTS

CHOICE 3

ROUNDS, STEER: 60-85 lbs., load 105.00.

FULL PLATES: Part load 60.00.

SPRING LAMB CARCASS CHOICE & PRIME 3-4

7 Loads

Compared to last week 55 lbs. down 135.00-138.00 late yesterday steady to 1.00 lower. 55-64 lbs. ltd. 13300 weak; 65-75 lbs. ltd. 13000 weak.

VEAL CARCASS-HIDE ON

PRIME (Special fed): 180-240 lbs. 165.00-175.00, steady to 10.00 higher.

GOOD & CHOICE BONDING TYPE: Northeastern Suppliers: 65-75 lbs. 88.00-94.00, bulk 90.00-93.00, steady to 2.00 higher; 55-64 lbs. 86.00-92.00, bulk 88.00-91.00; 45-54 lbs. 84.00-90.00, bulk 86.00-89.00; 35-44 lbs. 82.00-88.00, bulk 84.00-87.00; 34 lbs. down 80.00-86.00, bulk 82.00-85.00. Midwest and West Coast Suppliers: 70-80 lbs. 91.00-93.00, all 2.00-4.00 lower; 60-70 lbs. 89.00-91.00; 50-60 lbs. 87.00-89.00; 40-50 lbs. 85.00-87.00; 30-40 lbs. 83.00-85.00.

FRESH PORK CUTS

TRIMMED LOINS: 14-17 lbs. 103.00, steady.
SPAREIBS: 3 lbs. down part load 121.50.

CURED & PROCESSED MEATS

5 Loads

NO. 1 SLICED BACON VACUUM PACK: 122.00, firm.

FRANKS: 70 beef, 30 pork No. 1 pack 81.00, steady.

BOLOGNA: 70 beef, 30 pork No. 1 pack 91.00, steady.

Chambersburg Livestock

Chambersburg, Pa.
May 25, 1978

CATTLE 423. Compared with last week's market, slaughter steers grading good and choice 25 cents to \$2.00 higher. Slaughter cows steady to \$2.00 lower. Couple high choice slaughter steers 61.85, choice YG 2-4, 1000-1300 lb. 56.50-61.00, good 51.50-56.00, standard 47.25-52.00. Few choice slaughter heifers 49.00-53.50, few good 49.00-50.25. Utility & Commercial slaughter cows 38.25-43.50, couple 44.00. Cutters 38.75-42.10. Canner & L. Cutter 35.00-39.00, shells down to 31. Slaughter bullocks, few good 50.00-52.50. Yield Grade #1, 1100-1700 lbs. 46.30-53.75, 1 at 55.75.

FEEDER CATTLE: Good 250-650 lbs. heifers 48.00-55.00.

CALVES 380. Vealers grading choice about steady, standard and good 8.00-12.00 lower. Few prime vealers 87.50-89.50, choice 73.00-86.00, good 62.00-70.00. Standard & Good 90-110 lbs.

60.00-65.00. 70-85 lbs. 52.00-60.00.

FARM CALVES: Holstein bulls 90-120 lbs. 63.00-74.00. Holstein heifers 85-140 lbs. 60.00-104.00.

HOGS 103. Barrows and gilts steady. US No. 1-2 200-230 lbs. barrows & gilts 50.00-50.60, 1 lot No. 2-3 250 lbs. at 49.00, few No. 1-3 180-185 lbs. 47.35-49.50. **SOWS** few US No. 1-3 300-500 lbs. sows 39.75-43.00, **BOARS** 35.00-39.00.

FEEDER PIGS 64. US No. 1-3 20-30 lbs. feeder pigs 23.00-36.00 per head, No. 1-3 35-50 lbs. 40.00-53.50.

SHEEP 25. Spring

slaughter lambs 1 lot choice 100 lbs. 69.00, 1 lot good 40 lbs. feeder lambs at 57.50. Few slaughter ewes 23.00.

Lancaster Feeder Cattle

Lancaster, Pa.
Friday, May 19, 1978

Feeder Cattle

Today 479
Last Friday 312
Last Year 497

TREND: Few sales graded cattle 2.00-3.00 higher, not enough other sales for a market test as

bulk of supply sold in lots of four or less.

FEEDER STEERS: Mixed Good and Choice 550-625 lb. 62.60-65.00; one lot Good 460 lb. 62.50; couple lots mixed Good and Choice 775-825 lb. 57.50-57.85, one lot 1060-lb. 52.85.

FEEDER HEIFERS: Couple lots mixed Good and Choice 600-640 lb. 47.50-50.25;

one lot Standard and Good 480 lb. 52.50.

FEEDER BULLS: One lot Choice 780 lb. 52.50.

First Lighthouse
Built in 1719 on Little Brewster Island, America's first lighthouse was set up to defend Boston Harbor.

BEEFALO HYBRID CATTLE BRED BEEFALO FOR SALE

- Rapid gains on grass and roughage.
- 55-65 lb. Births - up to 1100 lb. yearling.
- Visit our farm and see our animals.

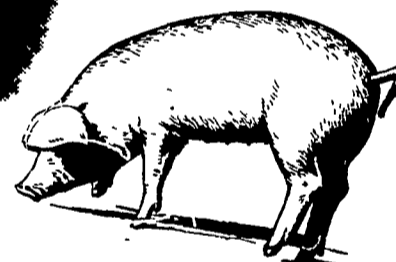
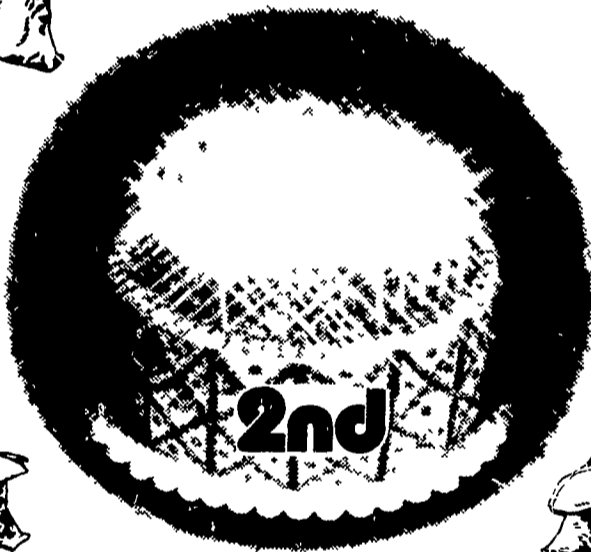
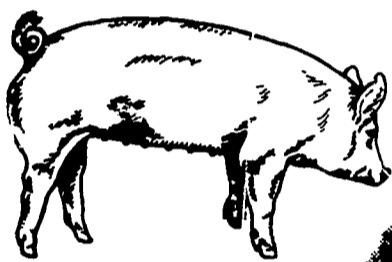
In stock **SEMEN \$12** an ampule
1/2 & 3/4 Blood Bulls & Heifers

BEEFALO N & J

4270 Quakerbridge Rd.
Princeton, NJ 08540 609-896-0336
Member World Beefalo Association

ANNIVERSARY

OUR 2nd



We would like to take this opportunity to thank everyone who supported us our first two years and we look forward to serving you in the future.

NEW SUMMER SCHEDULE

MAY THRU SEPT. - 7 A.M. TO 12 NOON

KNOW WHAT YOU ARE GOING TO GET FOR YOUR HOGS BEFORE THEY LEAVE YOUR FARM. NO SELLING COSTS.

**CALL FOR MARKET QUOTES
717-733-9648**

KEN EMERY

PENN PACKING BUYING STATION

AT THE GREEN DRAGON MARKET
RD 4, EPHRATA, PA. 17522

1 MILE NORTH OF EPHRATA ON NORTH STATE ST.