

Somerset Co. chooses new dairy princess

SOMERSET — Lynn Ann Taylor, daughter of Mr. and Mrs. Robert Taylor of Friedens R1, was selected as the 1978 Somerset County dairy princess, succeeding

Deann Hillegass of Berlin. Miss Taylor, 16, is a junior at North Star High School. Seven girls competed for the title in an event held at the Ramada Inn and was

attended by 275 people. Georgia Sechler, daughter of Mr. and Mrs. Guy Sechler of Somerset R1, was first runner-up and Annette Hillegass, daughter of Mr.

and Mrs. Robert Hillegass of Friedens was second runner-up.

The contestants met with a panel of judges prior to a buffet dinner that was

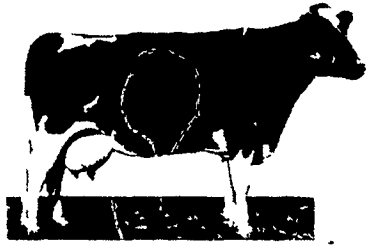
served to those attending the contest. The girls then appeared on stage with presentations promoting dairy products. They were interviewed by Harold Showman of Radio Station WVSC, Somerset, master of

ceremonies. Prior to the crowning of the new dairy princess, past dairy princesses were introduced by Barbara Berkley, chairman of the Somerset County Dairy Promotion Committee.

WOOD'S SALE CALENDAR

BRADCLAIRE

HERD DISPERSAL



Located just off Rt. 328, 1 mi. from Jackson Summit, Pa.; 4 mi. from Millerton; 7 mi. from Tioga; 15 mi. from Elmira, N.Y. Watch for auction arrows off Rt. 328 in Jackson Summit.

THURS. EVE., MAY 25

at 8:30 Sharp

36 REGISTERED HOLSTEINS 36

D.H.I.A.

1970 15662M 4.2T 652F	1973 14469M 4.0T 583F	1976 15350M 4.1T 625F
1971 15133M 4.1T 615F	1974 14073M 4.1T 581F	1977 14797M 4.0T 598F
1972 14834M 4.1T 612F	1975 14766M 4.1T 601F	1978 Rolling Ave. 15543M 4.0T 620F

Sire Power breeding for many years. Top sires used are Elevation, Jet Stream, Ivanhoe Pabst, Vigo Charmcross, Apollo Reroyal Chris, Pineyhill Galaxy, Woodbin Ivanhoe Dandy, Lucky Typeblazer, Hillhaven Standout Job and others.

Features: A real nice Elevation due in June with 3-3 329d 17,367m 3.9 674F. Dam also sells by Galaxy due 5/30 and never made under 628F up to 869F Lft. to date 107,700m 4,492F. Grdam by Kingpin with 20,000m and 828F and Lft. of 133,605m and 5,423F. 3rd dam by Inka Reflector with 635 & 612F, 4th dam by Melchior with 22,142m 920F and Lft. 135,680m 5,556F. A real fine pedigree. Her Royal Birch mat. sis. also sells proj. for 14,294m & 668F at 2-11.

A Pencor due 7/29 with 4-0 311d 19,393M 3.6 704F and proj. at 4-11 for 20,301M & 700F and still milking over 60 lbs. Dam by Big Rock Ormsby Triune with 5 records over 600F up to 731F and Lft. of 112,368M 4,456F Grdam by Melchior with 5 rec. over 700F up to 920F and Lft. of 135,680M 5,556F. 3rd dam by Burke Fobes Abbekerk.

A real nice Larry proj. for 490F at 2-0 and milking 56 lbs. Dam Lois also sells due in Aug. with 9 consecutive rec. over 600F up to 6-2 365d 19,443M 4.5 875F and Lft. to date of 167,678M 7,093 Grdam by Raphael with 9 consecutive rec. over 700F up to 995F and Lft. of 200,372M 9,026F. 3rd dam 4 rec. over 600F up to 790F and Lft. of 91,704M 3,828F after 5-7. 4th dam by Burke Fobes Abbekerk with 644F at 9-7. A fantastic pedigree! Members selling from this cow family completing 6 generations over 600F.

A nice Typeblazer due in Aug. with 2 rec. over 600F. Dam by Kingpin with 17,000M 661F Grdam by Silver Rocket with 16,444M & 722F. 3rd dam with 17,000M and 652F and Lft. of 108,096M 4,174F.

A Charmcross with 4/7 365d 20,739M 4.4 916F due in June. Dam by Kingpin with rec. over 600F. Grdam by Silver Rocket with 2 rec. over 600F. 3rd dam by Jess Burke with over 600F and Lft. of 98,368M 3,716F. Her mat. sis by Job sells with 2-1 351d 17,706M 4.0 709F due in Aug.

A Typeblazer with 643F and proj. for 19,927 & 649F. Dam with 4 rec. over 600F up to 774F and Lft. of 116,284M 4,210F and sister to Charmcross selling above.

A Breeze proj. for 18,000M and 669F at 3-2. Dam by Ormsby Triune with 3 rec. over 700F and Lft. of 115,746 & 4908F. Grdam by Lakefield Fond Delight Fobes. 3rd dam by Burke Teddy with 3 rec. over 700F up to 796F. 4th dam by Burke Fobes Abbekerk with 610F.

Many other outstanding pedigrees!!

Sales Mgr. Note:

This is an outstanding opportunity to purchase foundation animals! The entire herd is soundly based on longevity, regular calving interval, and very high test. It is a truly problem free herd. There were many more pedigrees equally as good but space was limited. A herd any breeder can appreciate.

Terms - Cash or Good Check.

Sale under cover.

Lunch available

Catalogs

Owners

MR. & MRS. BRADLEY BREWER

Pedigrees - Ronald Wood

WOOD SELECT MILKING HERD DISPERSAL

Located just off Rt. 549 seven miles from Mansfield, Pa., 3 miles from Roseville, Pa. 25 miles from Elmira, N.Y.

WED. EVE - May 31

At 8:00 P.M. Sharp

60 — Reg. and High Grade Holsteins — 60

5 Reg., 55 High Grades

April '78 Rolling herd ave. 15,087M 4.0T 616F

50 mature cows in all stages of lactation, 3 bred hfrs., 3 open yearlings, 3 six mo. old and 4 started calves 1 a reg. Astronaut Calf dam projected for 20,000M 950F. Interstate tested, preg. ex. charts day of sale.

Sales Mgr. Note:

I think you will appreciate this herd as I had the opportunity to pick 50 from a 70 cow herd. You will find a real milky herd of cows with good udders. Last month D.H.I.A. cows milking averaged 55 lbs. of 4.8 milk. 4 cows projected over 1000 of fat, high cow milked 107.2. Don't miss this opportunity to purchase from this good herd.

Also selling Appaloosa mare and stud colt - well marked - bridle & saddle.

Terms — Cash or Good Check.

Sale under cover.

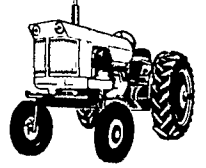
Lunch available

Catalogs

Owners

TIM and JILL WOOD

CONSIGNMENT MACHINERY & EQUIPMENT AUCTION



Located on Rt. 15 between Tioga and Lawrenceville, Pa. on the Gordon Wood Farm.

SATURDAY, MAY 27

12 Noon Sharp

O E. Bliss of Lawrenceville, Pa. has consigned all of his equipment as follows: JD 1969 - 350 diesel crawler, big blade (real nice); H Farmall tractor; 58 F600 Ford w/dump box, 5' metal sides; 68 F250 Ford pickup (360 eng.), extendable bumper & elec. brakes for hauling; 51 Chevy truck, 19' bed, 48,000 mi., runs good, 72 Honda 450cc w/windjammer & bags (like new); 74 Swinger 10 1/2' truck camper, self-contained battery system within; JD 24T baler w/kicker; McCormick 249A 2-row corn planter trail type w/fiberglass hoppers; NH 23 hopper blower w/30' pipe, NH hay conditioner; 36' hay elev.; 36' hay elev.; 8' cultipacker disk; 6.45 hay wagon w/kicker rack & radio tires (new); 2 bottom trailer plow; JD cyl backhoe arm; 5th wheel for tractor and more.

Consignments of Henry Pock, Caton, N.Y.; JD 60 tractor rollamatic front end; JD 24T baler w/kicker; JD #6 chopper w/1 row corn head; JD 55 table blower w/pipe; NH 461 haybind; JD 10' disk; JD 13 disk grain drill; JD 3 bottom 3 pt. plows; JD 36' elev. w/1 hsp. motor; JD side mount mower fits 2510 & others; JD haycrusher; JD 953 wagon w/kicker rack; JD PTO 14T spreader; JD cultivator for 60; JD 4 section harrow; AC 2 row corn planter 2 pt.; NH 56 side rake; lime spreader; land roller; grain auger; buzz saw; platform scales; and other items not listed. Also, Muller 350 gal. bulk tank & compressor, nice (may be seen at the Pock residence near Caton, N.Y.).

Other equipment consigned: 1972 GMC dump truck; B61 Mack tractor; Parke 24' dump trailer; 25 ton lowboy; M Farmall; H Farmall; IHC chopper w/1 row corn head; Papec self-unloading box & running gear; NH self unloading box & running gear; Lamco self unloading box & running gear; AC hopper blower; 2 weed sprayers (1 new); JD 4 bottom trailer plows; JD 12' tractor set harrows; JD 4 bottom 16" mounted plows; JD 5 wheel rake could be extended to 7 wheel, JD 3 bottom trip plows 3 pt. hitch; AC table blower; 24 ft. elev. w/motor; 300 Case chopper w/2 row corn & pickup heads; IHC 340 crawler loader w/4 in one bucket; 1967 Ford 1/2 ton pickup (25,000 miles); 1966 Ford F700 - 22 ft. bed tilt roll tack truck new tires, new paint; Massey Harris 44 tractor; 304 Trojan loader; 680 Case backhoe; 68 Auto car 10 wheeler dump w/alumn. body; 67 Mack tractor w/250 engine, Triplex transmission, full screw w/cab over sleeper.

Farm Machinery Call Gordon Wood 717-549-4901
Construction Equip. Call Lynn Daggett 717-537-6371



PFEIFER MACHINERY DISPERSAL

Located on Watercure Hill Rd., 3 miles from Elmira, N.Y. Take Jerusalem Hill Exit off Rt. 17, go to Bowby Rd. take a left then go approx. 1 mile to Watercure Hill Rd. make a right go 1 mile to the sale. People coming North from Rt. 328 - 549 or 14 take Rt. 14 North to Church St. in Elmira, make a right go approx. 1 mile to Rt. 17 Binghamton Exit, stay to your right 1/2 mile to Jerusalem Hill Rd. Watch for auction arrows. Having sold my farm I will sell the following on:

TUES. EVE — MAY 30

At 7:30 P.M. Sharp

Machinery

JD 4020 diesel tractor; 830 Case diesel tractor w/Oliver 74-H2 row mounted corn picker; Case 600 self propelled combine w/cab & power steering; Gehl #600 chopper w/2 row & pickup heads; Kasten self unloading box w/Knight #9 trailer running gear; Van Dale self unloading box w/Knight #9 trailer running gear; Dion self unloading box w/Gehl trailer running gear; 2 wagons w/18 ft. metal kicker racks; NH wagon w/kicker rack; NH 495 - 12 ft. haybine (real nice); NH 271 baler w/kicker; Witmore portable feed grinder; 10 ft. Brillion seeder; JD 494 four row corn planter; clover hopper blower; 20 ft. transport field cultivator; Killbros #300 grain box & running gear; 8 ton running gear (new); Shultz #18 manure spreader (new); 187 Hawk barrell spreader; 8x16x4 grain box w/dump trailer; Case 36" elev. w/motor & extra heavy cord; Mohawk rotary mower 3 pt. hitch; NH 56 side rake; weed sprayer transport type w/plastic tank; fertilizer sower 3 pt. hitch; NH hay dryer w/5 hsp. motor; Gehl table blower; grain auger; cement mixer; 3 sets ring tractor chains; several extra wheels & tires for wagons & spreaders; Patz silo unloader fits 12 to 14 ft silo; grass seed cleaner w/motor; large assortment of bolts; metal bolt tray; new hyd. hoses; hyd. cylinder; log chains; barrell grease; gear oil pump; dyes; new plow points & shins; elec. cords; roll chain; knife riveter; machine vice; bench vice; NH mower knives; PTO shaft; 40 ft. alumn. ladder; tractor shade & some other small items.

Selling order:

Small items at 7:30, machinery will be sold at 8:00 sharp so be on time.

Terms - Cash or Good Check.

Owners

FRANK & VIRGINIA PFEIFER

Auctioneer - Arlow Kiehl
Sales Mgr. - Gordon Wood - Mansfield, Pa.
Phone 717-549-4901

For the most in advertising coverage and preparing your sale, call Wood's Auction Service.