

In nature, there are certain undeniable laws which are never broken. You can count on them as fact wherever you go, whatever you do

On the farm, this is true also. While not always pleasant, I have learned that Mother Nature never relaxes her rules, and whenever I tangle with her, the outcome will be the same. Unfortunately for me, she wins, and I lose.

Here are some of the rules I've learned over the

Plant Lovers Corner

UNIVERSITY PARK — What do you plan to do with your woodlot? Improve it? Enlarge it? Build a hunting lodge? Plant Christmas trees? Sell logs or lumber?

E. P. Farrand, associate professor of forestry Extension at Penn State University, says you may own woodland and idle farm land for profit or recreation but management of the area is needed for proper resource development. To help owners manage woodlands, Farrand has written a correspondence course on small woodland forestry. Lessons give directions on how to control tree species by planting seedlings, encourage growth of tall straight trunks by proper spacing and removal of wood trees. Wildlife can also be protected by growing food and cover plants.

To enroll in the course, write Forestry, Box 5000, University Park, Pa. 16802. Make check for \$4.50 payable to Penn State. The correspondence course program offers the option of returning question papers to Penn State for correction and credit toward a certificate of accomplishment or using the course as a valuable reference.

This Mower Is In Your '78 Budget



Independent dual lever directional control of drive wheels instantly positions the fully visible mower deck exactly where you want it

You want hydrostatic maneuverability and you intend to have it in '79 or '80... right?

We think you can afford this mower in '78.



- Mower deck is shaft driven to assure consistent blade-speed throughout any cutting assignment
- Drive shaft plus two pin attachment affords quick, easy deck removal

- 12 or 16 H.P. Kohler engine creates outstanding power-to-cutting width ration for maintaining blade speed dependability
- Direct power input to hydrostatic units eliminates cumbersome belt drives and leaky hydraulic lines
- Rugged, compact design with low center of gravity, places operator directly above wheels for stability and traction on slopes
- Rigid lateral bracing prevents abrupt downward scalping action when single wheel passes over low spot
- Cutting width 44" 52" and 61"

AUTHORIZED DISTRIBUTOR

LAWN CARE OF PA.

Sales & Service
Martindale, PA 17549
Phone 215-445 4541
1 mile north of Martindale on Grist Mill Road
Mon, Tues, Thurs, Fri 8 to 8
Wed 8 to 5 Sat 8 to 2
DEALER INQUIRIES INVITED

years. Maybe they will help you in your farm life dealings.

1. If you ever wear good shoes to the barn, you are bound to walk in something that you shouldn't.
2. Snakes and other varmints are always found where they're least expected.
3. If you leave the livestock in on a cloudy day, because rain is expected, and go to town for the day, the sun will shine brightly.
4. On the other hand, if you leave the livestock out on a cloudy morning, and depart from the place, there will be hurricane weather with snow, hail, and sleet all day
5. You can never crawl through a barbed wire fence without leaving a "hunk" of your garments behind
6. If you try to take a shortcut through the fields and quickly run through a stretch of deep mud, otherwise known as a bottomless bog, you will always come out minus one shoe. Mud hoies love to eat shoes.

7. You will never split your jeans when working alone, it will always occur when there is a crowd around to hear that sickening ripping noise.

8. All farm animals are born with a sixth sense ability to find any weak spots in a fenceline. Some of the more advanced creatures have the talent to invent a weak spot if none exist.

9. When driving a motored vehicle, such as a tractor or truck, anytime you forget to check the gas tank, you will run out of gasoline in some long-lost, forgotten-by civilization spot

10. Directions to anything are too confusing to understand. This includes the written variety to equipment, or the oral variety of how to get somewhere

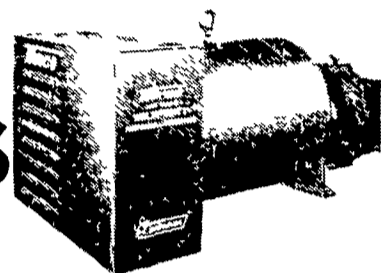
11. No animal in the United States understands English when you yell at them. They will simply get a dumb "suffering" look on their faces and ignore you.

12. Finally, whenever you think that life has taught you everything, brace yourself for a surprise. A new shock is bound to be around the corner

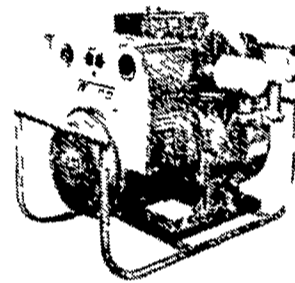


PTO GENERATORS

15-65 KW



High Performance Power



New Stock

- Over 100 PTO Units In Stock
- Over 200 Portable Engine Units





WINCO FEATURES

ELECTRONIC EXCITATION

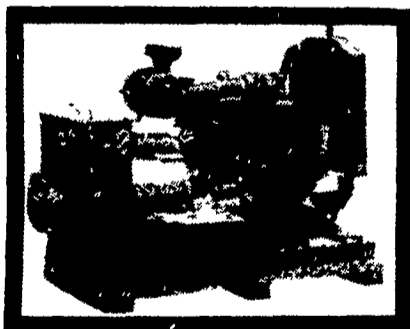
With Winco ELECTRONIC EXCITATION there is no commutator or DC brushes — no moving parts. This increases reliability and reduces maintenance, with the advantage of ready service accessibility.

MAXI-WATT

It takes more KW power to start a motor than to keep it running. WINCO PTO power plants with the maxi-watt winding deliver superior motor starting ability. Maxi-watt is an extra winding in the fields that provide extra power for heavier motor starting loads.

 <p>SAFETY COLOR-CODED VOLTMETER Quickly tells operator when voltage is safe — warns against low or high voltage</p>	 <p>THE OCTOPUS WINCO's exclusive new power plug-connect or disconnect the standby load with one convenient plug. This plug saves on installation costs. It is rugged and heavy duty for years of long service and is the ultimate in convenience</p>
 <p>HANDY RECEPTACLES 115/230 Volt for welders heavy motor loads and standby connections 115 Volt for convenient plug in of electric tools and lights</p>	 <p>PTO GEAR DRIVE MECHANISM Precision ground helical gears eliminate potential service problems of shorter lived chain link drive</p>

MAXI POWER



Auto Generator Sets

20 thru 500 KW

USED UNITS

- 2 20-35 KW Winpower with trailer and shaft
- 12.5 Onan Gas Drive
- 2650 Watt Sear's Unit
- 1 25 KW Winco, 3 phase, with trailer and shaft

LEONARD MARTIN CO.
330 FONDERWHITE RD., LEBANON, PA 17042
717-274-1483