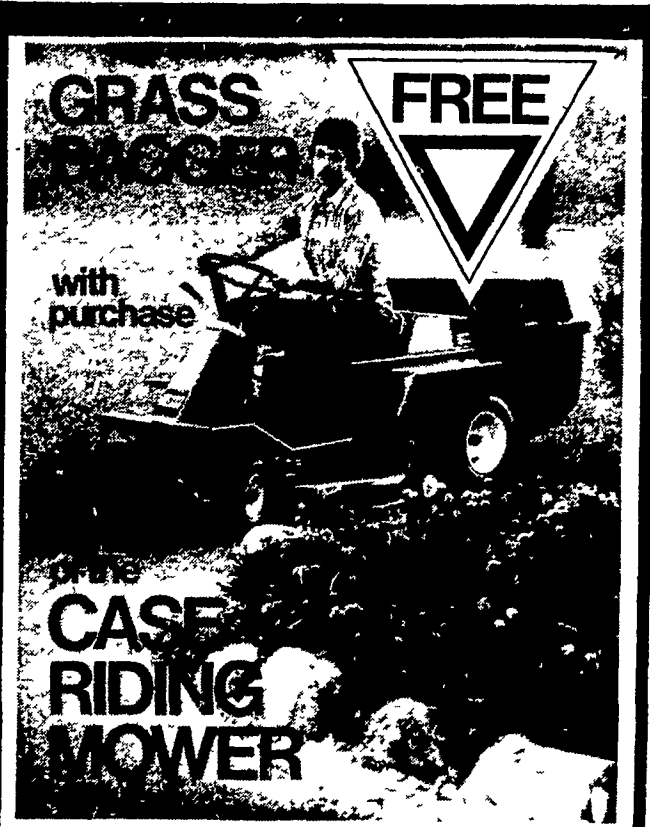


Know Where the Activities Will Be?

Read the Farm Women Calendar.

Livestock market and auction news



The CASE Mod 80 is a brand new riding mower with a yard full of high performance features.

And now you can catch what you cut absolutely free! Better hurry, free bagger is a limited time offer.

doing something about it.

ERNEST B. CLAUSER
FARM MACHINERY SERVICE
 SUCCESSOR TO BENJ. W. CLAUSER
 RT. 2, BOX 682, WESCOSVILLE, PA.
 LOCATED ON RUPPSVILLE ROAD
 PHONE: 215-395-2542

Middleburg Auction

Middleburg, Pa.
 May 9, 1978

CATTLE 385. Compared with last Tuesday's market, slaughter cows steady to \$1 higher. Few High Choice & Prime slaughter steers 54.75-55.85, one at 56.10, Choice No. 2-4 1000-1300 lbs. 52.00-54.60, Good 48.75-52.50, Standard 45.75-48.75. Few Choice slaughter heifers 49.75-52.85, Good 46.00-49.75. Utility & Commercial slaughter cows 38.00-41.85, couple to 42.85, Cutters 37.00-39.25, Canner & Low Cutters 35.00-37.25, Shells down to 33.00. Few Good slaughter bullocks 43.25-47.60. Few Yield Grade #1 950-2135 lbs. slaughter bulls 43.60-49.25. Medium & Good 300-775 lbs. feeder steers & bulls 45.00-56.00, few to 61.00; Medium

300-700 lbs. holsteins 45.00-50.00.

CALVES 178. Vealers grading Good & Choice \$1 to \$4 higher. Few Prime vealers 79.00-85.50, Choice 75.00-84.00, Good 66.00-75.00, few Standard & Good 110-130 lbs. 65.00-68.00, few 90-110 lbs. 63.00-67.00, 70-85 lbs. 50.00-55.00, few Utility 60-70 lbs. 35.00-40.00. Farm calves, holstein bulls 90-120 lbs. 66.00-80.00; holstein heifers 90-120 lbs. 69.00-88.50.

HOGS 690. (Monday, May 8, 1978). Barrows & gilts \$1.25 to \$1.50 higher. US No. 1-2 200-230 lbs. barrows & gilts 49.00-50.35, No. 1-3 190-250 lbs. 48.00-49.10, No. 2-3 190-270 lbs. 46.35-47.50.

HOGS 100. (Tuesday, May 9, 1978). US No. 1-3 380-700 lbs. sows 39.00-43.25, No. 2-3 250-400 lbs. 33.75-37.50. Boars 30.75-33.75.

FEEDER PIGS 248. US No. 1-3 20-35 lbs. feeder pigs

33.00-44.00 per head, No. 1-3 35-50 lbs. 42.00-55.50, No. 1-3 70-90 lbs. 60.50-68.00 per head.

SHEEP 12. Few Choice 45-85 lbs. spring slaughter lambs 68.00-79.00.

No. 2-3 300-675 lbs. 34.00-38.00. Boars 33.00-34.00.

FEEDER PIGS 148. US No. 1-3 30-45 lbs. feeder pigs 31.00-41.00 per head, No. 1-3 40-70 lbs. 44.00-55.00 per head.

SHEEP 27. Choice spring slaughter lambs 67.00-72.50. Good 45.00-58.50.

Carlisle Auction

Carlisle, Pa.
 May 9, 1978

CATTLE 189. Compared with last Tuesday's market: Choice slaughter steers 54.10-56.25, Good 48.75-55.20, Standard 42.00-47.00, Utility 36.00-41.00. One Choice slaughter heifer at 53.50, Good 45.25-48.00, Standard 41.00-44.00, Utility 32.00-37.00. Utility and Commercial slaughter cows 39.00-44.25. Cutters 37.00-42.00, Canner and Low Cutter 30.00-36.00. Few Good slaughter bullocks at 49.50, Standard 45.25-47.85, Utility 38.00-42.25.

CALVES 130 Prime vealers 70.00-86.50, Standard and Good 90-110 lbs. 52.50-75.00, 70-90 lbs. 40.00-58.00, Utility 55-100 lbs. 32.00-44.00.

HOGS 343. US No. 1-2 200-240 lbs. barrows and gilts 48.60-49.75, No. 1-3 200-250 lbs. 45.25-48.50, No. 2-3 200-260 lbs. 41.00-45.00. US No. 1-3 300-550 lbs. sows 41.25-41.75,

Valley Livestock

Valley Stockyards
 Athens, Pa.

Monday, May 8

Reported receipts of 369 calves, 133 cows, 79 hogs, 52 heifers, 4 sheep, 4 lambs, 36 bulls, and 16 steers. Cattle market steady and calf market higher.

Veals 75.00-89.00; bobs, 90 to 110 lbs. 70.00-75.00; bobs, 80 lbs. and down 45.00-65.00; grassers and feeders 42.00-50.00; lambs 50.00-65.00; sheep 18.00-24.00; hogs, 200 to 250 lbs. 45.00-47.00; sows 32.00-37.00; boars 25.00-29.00; pigs 25.00-35.00; heifers 40.00-44.25; steers, good 46.00-48.50; steers, common 40.00-44.00; bulls 41.50-45.75; cows, good 39.00-41.00; cows, poor or small 30.00-34.00; small horses 100.00-175.00; ponies 10.00-30.00; goats 12.00-30.00.

TOP OF THE HOG MARKET

DANVILLE LIVESTOCK MARKET
 OLD ROUTE 11
 DANVILLE, PA 17821
 717-275-2880



Market your hogs the auction way.

SALE EVERY
 MONDAY 2 P.M.

Melvin M. Lehman
 (Owner)

HAY, STRAW & CORN — SALE —

Every Friday at 12 Noon



GREEN DRAGON MARKET & AUCTION

RD No. 4 Ephrata, Pa. 717-733-2334
 1 mile North of Ephrata on N. State St.
 Out of State Buyers - Cash or Certified Check Only.

Babcock B-300V

1ST IN INCOME OVER FEED & CHICK COSTS
20TH PENNSYLVANIA RANDOM SAMPLE TEST

Results of the 20th Pennsylvania Random Sample Egg Laying Test confirm the reports we've been receiving from egg producers in Pennsylvania on the outstanding performance of the Babcock B-300V.

If you've been buying chicks based on Random Sample performance, isn't it time to buy today's winner -- the Babcock B-300V.



BABCOCK B-300V
1st CAGE AND FLOOR.

	INCOME OVER CHICK & FEED COST		EGG PRODUCTION PER HEN HOUSED		% LAYING HOUSE MORTALITY		LB. FEED PER LB. EGGS	
	CAGE	FLOOR	CAGE	FLOOR	CAGE	FLOOR	CAGE	FLOOR
Babcock B-300V	6.07	6.74	256.1	275.7	3.1	1.0	2.36	2.33
Shaver 288	5.52	6.27	245.5	273.1	5.2	3.0	2.44	2.44
DeKalb XL	5.85	5.96	253.3	275.7	2.1	3.0	2.43	2.59
Hisex	6.04	6.43	258.8	268.3	4.2	7.0	2.43	2.36

IMPORTANT NOTICE: We have received several questions concerning Babcock's showing in European Egg Laying tests as advertised in this paper. The Babcock B-300V was not entered in the recently completed Wissinkenke and Putten Laying Tests.



P.O. BOX 280 / ITHACA, NEW YORK 14850 / U.S.A. / PHONE: (607) 272-5990