

Hog Markets

Lancaster Market

Lancaster, Pa.
Monday, May 8, 1978
HOGS: Barrows and gilts steady to 50 lower.
BARROWS AND GILTS: US 1-2 205-240 lbs. 50.00-50.25; US 1-3 200-255 lbs. 49.50-50.00.

Vintage Hog

Saturday, May 6
Reported 975 head.
No. 1, 200 to 245 lbs. 48.00-49.75; No. 2-3, 200 to 250 lbs. 47.00-48.00; lightweights, 160 to 195 lbs. 43.00-46.25; heavystraights, 260 to 290 lbs. 44.85-48.50; sows 37.00-42.00; boars 34.00-36.10.
Wednesday, May 10
Reported 616 head.
No. 1, 200 to 250 lbs. 48.50-49.85; No. 2-3 200 to 250 lbs. 47.25-48.35; lightweights 150 to 195 lbs. 44.50-47.60; heavyweights 260 to 280 lbs. 45.85-47.75; sows 38.00-42.50; a few boars 37.00-37.50.

Indianapolis Hogs

Thursday, May 11, 1978
HOGS: 1500 - Barrows and gilts moderately active, mostly 50 higher. US 1-2 200-240 lbs. 50.25-50.50; US 1-3 200-250 lbs. 49.75-50.25.
SOWS: Moderately active, steady to 25 lower. US 1-3 Few 375 lbs. 43.50; 450-600 lbs. 45.50-46.00.

Lancaster Auction

Lancaster, Pa.
Wednesday, May 10, 1978
HOGS: Barrows and gilts mostly 50 higher.
BARROWS AND GILTS: US 1-2 205-240 lbs. 50.50-51.00; Few US 1 210-235 lbs. 51.25-51.75; US 1-3 200-255 lbs. 49.50-50.50.
SOWS: US 1-3 300-450 lbs. 42.00-43.50; 450-600 lbs. 43.00-44.00; Few 44.00-44.50.

Peoria Hog

May 11, 1978
HOGS: 4000 - Barrows & gilts moderately active, opening firm to 50 higher. US 1-2 200-230 lbs. 49.50-50.00, 150 head 50.25; US 1-3 200-240 lbs. 49.00-49.50.
SOWS: Steady to 1.00 lower, most decline on wts over 500 lbs. US 1-3 350-500 lbs. 43.50-44.00; 500-650 lbs. 44.00-44.50, few 45.00.

St. Louis Hog

Thursday, May 11, 1978
HOGS: 6500 - Barrows & gilts fairly active, 25-50 higher. US 1-2 200-240 lbs. 49.50-49.75; US 1-3 200-250 lbs. 49.00-49.50.
SOWS: Steady to 50 higher. US 1-3 300-450 lbs. 44.00; 450-500 lbs. 44.00-44.50; Over 500 lbs. 45.00.

New Holland Hog

New Holland, Pa.
Monday, May 8, 1978
Hog Auction
Today 1391
Last Monday 1329
Last Year 1479
TREND: Compared to last Monday barrows and gilts 1.00-1.50 higher.
BARROWS AND GILTS: US 1-2 205-240 lbs. 49.25-49.75; late 49.75-50.25; Couple lots US 1 205-235 lbs. 50.00-50.50; few late 50.50-51.00; US 1-3 200-245 lbs. 48.75-49.50.

New Holland Feeder Pigs

New Holland, Pa.
Wednesday May 10, 1978
Feeder Pigs
Today 1319
Last Wednesday 1310
Last Year 916
TREND: Compared to last Wednesday feeder pigs 3.00-6.00 higher. All pigs weighed on arrival and sold by the hundred weight.
US 1-2 30-50 lb. 127.00-147.00; 50-65 lb. 106.00-126.00; 65-85 lb. 89.00-106.00.
US 2-3 25-40 lb. 115.00-137.00; One lot 28 lb. 145.00; 40-50 lb. 107.00-130.00; 50-60 lb. 90.00-113.00.

Lancaster Grain

Friday, May 12, 1978
These prices are made up of the average prices quoted by a number of participating area feed and grain concerns. It should be noted however, that not every dealer or broker handles each commodity. All prices are per bushel except ear corn and soybean meal which are per ton.
The average prices quoted Friday, May 12 are as follows:

	Bid+	Offered+
Ear Corn	65.00	78.00
Shelled Corn	2.70	2.92
Barley	1.95	2.20
Oats		
Local	1.50	1.80
Western	1.92	2.12
Wheat	2.90	3.15
Soybeans	6.70	
Soybean Meal		238.50

Lancaster Feeder Pig

Lancaster, Pa.
Tuesday, May 9, 1978
FEEDER PIGS
TODAY 1735
TWO WEEKS AGO 1815
LAST YEAR 1209
TREND: Compared to two weeks ago feeder pigs 2.00-5.00 higher. All pigs weighed on arrival and sold by the hundred weight. Supply included about 70% US 1-2, about 15% US 2-3 with the balance Utility and no grades.
US 1-2: 23 head 23-27 lb. 165.00-171.00; 28-40 lb. 140.00-151.00; 40-50 lb. 130.00-144.00, few 121.00-130.00; 50-60 lb. 113.00-126.00, 50 head early 106.00-107.00; 60-65 lb. 98.00-111.00; few 70-85 lb. 92.00-98.00.
US 2-3: 29-40 lb. 127.00-147.00, 25 head 155.00-157.00; 40-45 lb. 117.50-132.00; couple lots 50-55 lb. 91.00-97.50.
Utility: 30-40 lb. 78.00-89.00.

Futures Trading

(Closing Bids as of Thursday, May 11, 1978)

	Chicago Cattle	Chicago Hogs	New York Maine Potatoes	Chicago Fresh Eggs
May				44.80
June	56.55	54.10		45.20
July		54.60		49.50
Aug.	55.65	52.25		57.30
Sept.				
Oct.	54.85	48.60		
Nov.			5.20	
Dec.	55.05	49.70		
Jan.	55.10			
Feb.		48.35		
March			6.14	
April			6.55	
May			6.50	

Trend - Cattle are higher, Hogs are higher, Potatoes are lower, and Eggs are mixed.

Market Provided by Commodity Department Reynolds Securities, Inc.

Chicago Grain Futures

(Closing Bids as of Thursday, May 11, 1978)

	Corn	Wheat	Soybeans	Soybean Meal
May	2.57 ³ / ₄	3.07 ¹ / ₂	7.25 ¹ / ₂	177.50
July	2.54 ³ / ₄	3.08	7.08 ¹ / ₂	179.20
Aug.			6.89	178.10
Sept.	2.53 ¹ / ₂	3.11	6.50	173.00
Oct.				167.60
Nov.			6.19 ¹ / ₂	
Dec.	2.55	3.16 ¹ / ₂		164.90
Jan.			6.23	
Mar.				

Trend - Corn is higher, Wheat is higher, Soybeans are mixed and Soybean Meal is mixed.

Market Provided by Commodity Department Reynolds Securities, Inc.

U.S. Inspected Livestock Slaughter

Estimated Daily Livestock Slaughter Under Federal Inspection

Week to Date	CATTLE	CALVES	HOGS	SHEEP
577,000	60,000	1,221,000	86,000	
Same Period Last Week	566,000	64,000	1,191,000	85,000
Same Period Last Year	560,000	66,000	1,171,000	89,000

FORTY-FOUR YEARS OF SERVICE . . .
to the farmer, to the dealer and to the packer.
May we serve you?

S. K. SHOTZBERGER, INC.

LIVESTOCK TRANSPORTATION

Gene Zwally, President
Marvin Johns, Secy. Treasurer
P.O. Box 925, Lancaster, PA 17604
Phone: 393-4641 (day or night)

J.M. HOOBER Inc. LANCASTER STOCKYARDS

Your Livestock Broker
Serving you since 1895.

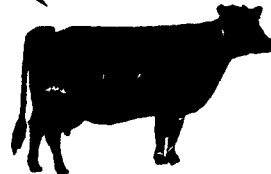
- Up-to-date market information.
- We sell slaughter cattle, fat hogs, calves, lambs, feeder pigs.
- Suppliers of feeder cattle.

NEXT FEEDER PIG SALE - MAY 23, 1978

Consign your livestock to J.M. Hooper Inc., where it will receive personal care and service.

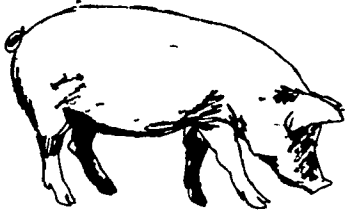
Call Us:
Phone (717) 397-6191 - Home 569-2084
Small Stock Division 397-6191 - Home 626-5659

CONTACT:
JOHN CAMPBELL
Atglen, PA
(215) 593-5529
GARY McGEE
Spring Run, PA
(717) 349-7300
DAN DERR
Conowingo, MD
(301) 378-3280



ATTENTION CATTLE FEEDERS

Do you want to make buying your stockers and feeders easy. It can be very simple. Just call and give us your order. All orders filled to your exact specifications. Call us anytime. We can be very helpful.



NEXT FEEDER PIG SALE

TUESDAY, MAY 23 - 1 P.M.



Consign all your feeder pigs to Walter M. Dunlap & Sons where they will be handled by a capable and experienced staff.

FEEDER PIGS RECEIVED FROM 6 A.M. TO 11 A.M.

PLEASE NOTE

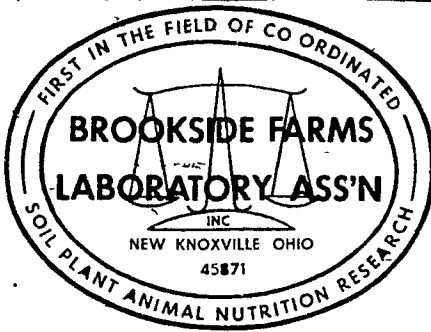
For the Graded Feeder Sale scheduled for Friday, May 19th beginning at 6 P.M. - all cattle to be graded must arrive by 2 P.M. day of sale.
In cooperation with the Pa. Department of Agriculture, we are now tattooing all market hogs.

WALTER M. DUNLAP & SONS

LANCASTER STOCK YARDS

Consignors can get state tags at our office, thereby saving 25% marketing expense.

For Further Information, Call 717-397-5136



National Reputation - Local Service