

Variety of hobbies featured at craft show

By KENDACE BORRY
LANCASTER -- Over eighty craftsmen gathered their work together to converge on Park City Mall, Lancaster, last weekend to

display, demonstrate, and sell their handiwork. Shoppers had the opportunity to see weaving, pottery, woodworking, jewelry making, macrame,

fraktur, theorem painting, and woodcarving, to name a few of the wide variety of crafts on view. All the craftsmen exhibiting were members of

the Pa. Guild of Craftsmen. The show was the largest craft show in the northeast during 1978 in which the

exhibitors were required to demonstrate their work. One exhibitor on hand at the show was Mrs. Roy M.

Eshleman, Lancaster, a juried member of the Pa. Guild of Craftsmen. She is a
(Turn to Page 130)

COMING JUNE 3
Lancaster Farming's Special Annual

**DAIRY
ISSUE**



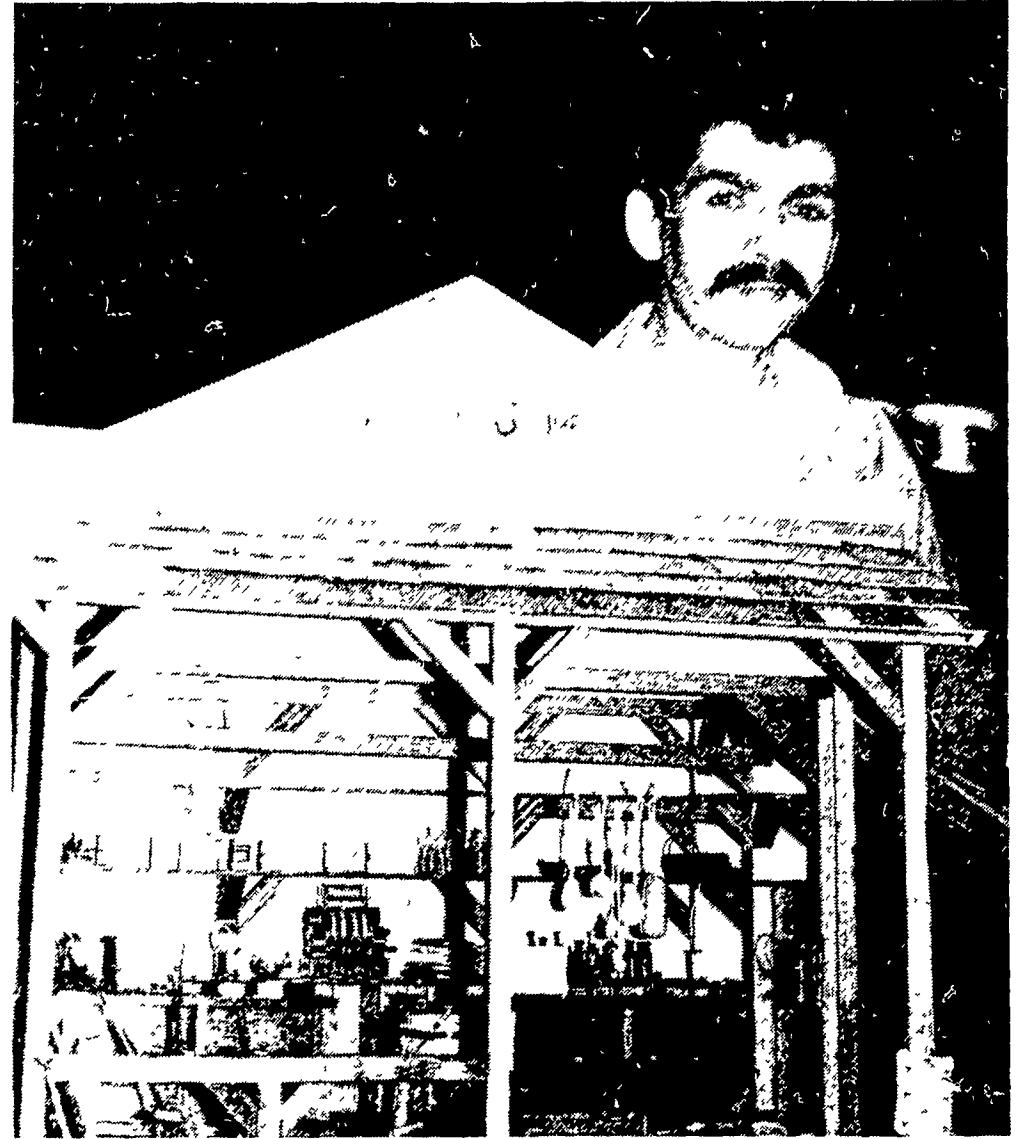
FEATURING

- Special dairy stories and features
- Local Dairy Association news
- Latest information for the dairy farmer

ADVERTISERS...

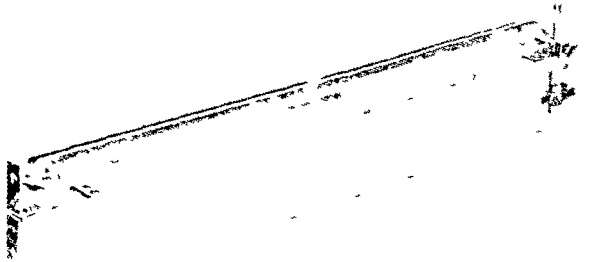
Get Complete Coverage by Reserving Your Space Now In This Special Issue.

Deadline for Ads —
May 30. Phone Area Code 717-394-3047
or 626-1164

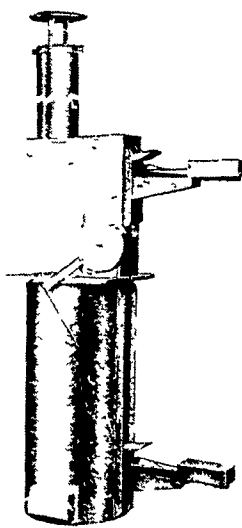


One miniature on display by Tony Iacono was this general store, complete with all the items one would expect to find in a real old-fashioned general store.

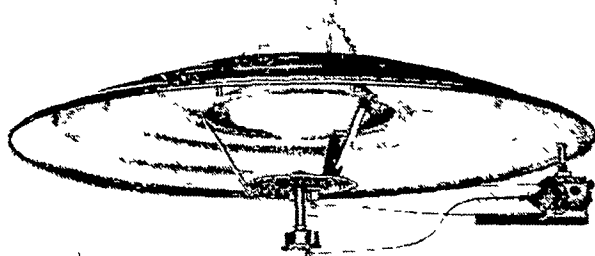
Shenandoah



SHENANDOAH 8' STAINLESS STEEL
WATERER
w-BRASS NIPPLE



SHENANDOAH
INCINERATOR



SHENANDOAH
BROODER
w-100 PERCENT SHUT OFF

CHORE-TIME

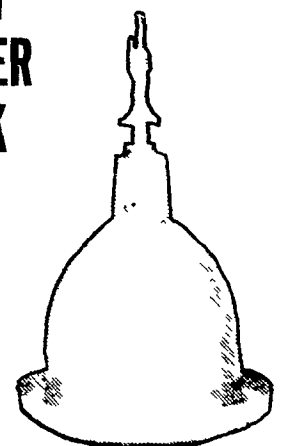
Poultry and Livestock Systems

<p>CHORE-TIME</p> <p>Advanced Air-Systems Featuring The Automatic Air Inlet</p>	<p>CHORE-TIME</p> <p>Feed Storage & Flex Auger Delivery System for Confinement Feeding</p>	<p>CHORE-TIME</p> <p>Cage Layer Systems & Components Featuring POCKMAN "Galv-A-Weld" Cages</p>
<p>CHORE-TIME</p> <p>Controlled Feeder System for Breeder Pullets and Hens</p>	<p>CHORE-TIME</p> <p>Adult Turkey Confinement Production Systems</p>	<p>CHORE-TIME</p> <p>Completely Automatic Feeding System Featuring The CHORE-MATIC</p>

AGRI EQUIP., INC. OFFERS COMPLETE

• SALES • INSTALLATION • SERVICE

PLASSON
**DRINKER
MARK
III**



STORE HOURS:
Mon. - Fri.
7:30 to 5:30;
Sat. 7:30 to 3:00

AGRI-EQUIPMENT, INC.

CATTLE, HOG, POULTRY EQUIPMENT
RD 4, EPHRATA, PA 17522 PH: 717-354-4271