

Livestock market and auction news

Dewart Auction

Dewart, Pa.
May 1, 1978

CATTLE 234. Compared with last Monday's market, slaughter steers steady to weak. Slaughter cows mostly 75 cents lower. Choice 1000-1265 lbs. slaughter steers 51.50-53.25, Good 48.85-41.25, Standard 43.75-48.00, few Utility 40.35-43.25. Few Choice slaughter heifers 47.25-50.00, few Good 43.75-46.10, Standard 38.75-44.00, few Utility 32.10-38.00. Utility and Commercial slaughter cows 38.75-41.10, few to 42.50, Cutters 36.35-38.85, few to 40.00, Canner and Low Cutter 33.50-36.10, few shells down to 28.00. Few Choice slaughter bullocks

49.75-50.25, few Good 46.50-48.75, few Standard 42.85-44.25. Few Yield Grade No. 1 1175-1410 lbs. slaughter bulls 43.75-46.75. Few Choice 570-700 lbs. feeder steers 55.00-55.25. Good and Choice 335-660 lbs. feeder heifers 38.00-47.50. Few Medium and Good 500-775 lbs. feeder bulls 37.00-46.25, individuals' 48.75 and 50.50.

CALVES 152. Vealers mostly \$1-\$3 higher. Choice vealers 80.00-85.00, Good 68.00-79.00, Standard and Good 110-130 lbs. 60.00-67.00, 90-110 lbs. 57.00-62.00, 65-85 lbs. 48.00-58.00. Farm Calves: Holstein bulls 90-120 lbs. 55.00-69.50; Holstein heifers 85-130 lbs. 64.00-77.00, few to 84.00.

HOGS 395. Barrows and gilts mostly \$1 higher. US No. 1-2 200-235 lbs. barrows

and gilts 48.00-48.70, No. 1-3 200-250 lbs. 47.20-48.00, No. 2-3 190-250 lbs. 46.50-47.30, few No. 2-4 205-275 lbs. 45.40-46.00, few No. 1-3 175-190 lbs. 43.10-45.20. US No. 1-3 300-460 lbs. sows 38.75-40.25, two head 41.00 and 42.50, No. 2-3 225-544 lbs. 34.00-39.00. Few Boars 32.00-33.75.

FEEDER PIGS 114. US No. 1-3 20-35 lbs. feeder pigs 24.00-39.50 per head, No. 1-3 30-50 lbs. 40.50-44.50 per head.

SHEEP 17. Few Choice 85-110 lbs. spring slaughter lambs 70.00-74.50, few Good 50-100 lbs. 40.00-50.00. Slaughter ewes 10.50-21.00.

46.00-50.75, Good 42.00-46.00, Standard 42.00-45.00, Utility 38.00-42.00. Yield Grade #1 1000-1900 lbs. slaughter bulls 44.00-48.00; yield grade #2 900-1600 lbs. 40.00-45.00. Few Medium & Good 400-600 lbs. feeder steers 40.00-55.00; few Medium & Good 400-600 lbs. feeder heifers 38.00-45.00; few Medium & Good 400-600 lbs. feeder bulls 40.00-45.00.

CALVES 197. Choice vealers 72.00-82.00, Good 64.00-71.00, Standard & Good 110-130 lbs. 62.00-68.00, 90-110 lbs. 52.00-60.00, Standard 70-90 lbs. 35.00-55.00. Farm calves, holstein bulls 90-120 lbs. 67.00-80.00; holstein heifers 85-130 lbs. 62.00-75.00.

HOGS 383. US No. 1-2 200-235 lbs. barrows & gilts 47.60-48.60, No. 1-3 46.50-47.50, No. 2-3 46.00-47.25, No. 1-3 130-170 lbs. 38.50-44.00. US No. 1-3 300-500 lbs. sows 38.00-43.00, No. 2-3 300-600 lbs. 36.00-38.50. Boars 26.00-32.00.

FEEDER PIGS 28. US No. 1-3 25-30 lbs. feeder pigs 12.00-26.00 per head, No. 1-3 35-50 lbs. 28.00-40.00 per head.

SHEEP 0. No sales on offer.

Baltimore USDA

May 1, 1978

CATTLE 450: Moderately active, slaughter steers and heifers 50 cents higher, cows steady to 75, instances \$1.00 higher. Bulls steady to 50 cents lower, few feeders steady. Supply 30% slaughter steers and heifers, 50% cows, 15% feeder cattle, balance bulls.

SLAUGHTER STEERS: Choice 3-4 1030-1200 lbs. 52.00-54.00; Good & Choice 2-4 1000-1200 lbs. 51.00-52.00; Good 2-4 1150-1300 lbs. 47.00-51.00; including package Good Holsteins 2's 1300 lbs. 48.00.

SLAUGHTER HEIFERS: few Choice 2-4 980-1170 lbs. 48.50-49.00; Good 780-1200 lbs. 43.75-47.00.

COWS: Utility 2-3 37.25-43.00; several 44.00-44.60; Commercial 3-5 36.50-40.75; Cutter 36.00-40.00; several high Dressing 40.50-40.75; Canner & low Cutter 32.00-36.00.

BULLS: YG 1-2 1115-1645 lbs. 42.75-49.00.

FEEDER CATTLE: few Choice steers 400-525 lbs. 60.00-65.00.

HOGS 1100: Barrows & Gilts 50 cents higher. US 1-2 200-240 lbs. 47.25-47.50; US 2-3 230-260 lbs. 46.25-47.25.

SOWS: 50, instances 75 cents higher. US 1-3 300-600 lbs. 38.00-39.00, few 39.25.

VEAL & CALF AUCTION 40: Choice 140-250 lb. Vealers 65.00-79.00 couple Prime 80.00-82.00; Good 100-230 lbs. 55.00-66.00; 80-100 lbs. 41.00-55.00.

New Holland Dairy

New Holland Sales Stables

Wednesday, May 3, 1978
Reported receipts of 87 cows, 129 heifers, and 10 bulls. Market stronger than last week's market.

Load of Butler Co., purebred and grade, fresh 570-1000, springers 650-1115; load of Pa. fresh 600-840; load of Pa. fresh 525-730; load of N.Y., purebred and grade, fresh 770-1000, springers 775-1250; local cows 475-900; springing heifers 475-875; open heifers 225-425; bulls 240-380.

Valley Livestock

Valley Stockyards
Athens, Pa.

Monday, May 1

Reported receipts of 386 calves, 226 cows, 52 hogs, 61 heifers, 7 sheep, 36 bulls, and 7 steers. Cattle market strong and calf market strong.

Veals 46.00-86.00; bobs, 90 to 110 lbs. 38.00-83.00; bobs, 80 lbs. and down 30.00-60.00; grassers and feeders 25.50-42.00; sheep 10.00-21.50; hogs, 200 to 250 lbs. 39.50 lbs. 39.50-49.50; sows 32.00-42.50; boars 30.00-47.50; pigs 23.00-50.00; heifers 31.00-50.00; steers, common 41.00-48.00; bulls 37.00-47.00; cows, good 47.00-40.00; cows, medium 32.50-36.50; cows, poor or small 18.50-34.00; horses 100.00; ponies 67.50; goats 7.00-25.00.

Martinsburg Auction

Martinsburg, Pa.
May 1, 1978

CATTLE 330. Compared with last Monday's market; Choice slaughter steers 52.00-55.00, Good 48.00-52.00, Standard 45.00-48.50, Utility 38.50-42.00. Choice slaughter heifers 48.00-52.00, Good 42.00-47.00, Standard 41.50-45.50, Utility 37.00-39.00. Utility & Commercial slaughter cows 38.00-43.00. Choice slaughter bullocks

L & M FUR & WOOLEN ENTERPRISE



Quality Electrified Mountons & Furs
Tannery Direct Dist. - Wholesale & Retail
Check Our Quality, Price & Services!

- Woolen Hosp. Pads - Natural & All Colors
- Pa. Largest Selection of Woolen Products
- Sheepskin Coats at Reasonable Prices
- See Us At Meadowbrook Market in Leola

117 W. Summit St., Mohnton, PA
215-777-2465
Hours: Mon. - Fri. 9-8:30; Sat. 9-5

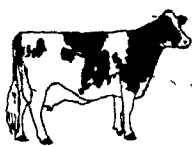
CURIOUS RED?

WRITE OR CALL FOR FREE INFORMATION ABOUT RED & WHITES AND THE OPEN HERDBOOK AND GRADE-UP PROGRAM OF THE RED & WHITE DAIRY CATTLE ASSOCIATION.

Subscribe To Our Monthly Publication:

THE RED BLOODLINES

Introductory offer - 12 Issues, only \$2.00



RED & WHITE DAIRY CATTLE ASSOCIATION

Crystal Spring, Pennsylvania 15536
814-735-4221

Babcock B-300V

1ST IN INCOME OVER FEED & CHICK COSTS
20TH PENNSYLVANIA RANDOM SAMPLE TEST

Results of the 20th Pennsylvania Random Sample Egg Laying Test confirm the reports we've been receiving from egg producers in Pennsylvania on the outstanding performance of the Babcock B-300V.

If you've been buying chicks based on Random Sample performance, isn't it time to buy today's winner -- the Babcock B-300V.



BABCOCK B-300V
1st CAGE AND FLOOR.

	INCOME OVER CHICK & FEED COST		EGG PRODUCTION PER HEN HOUSED		% LAYING HOUSE MORTALITY		LB. FEED PER LB. EGGS	
	CAGE	FLOOR	CAGE	FLOOR	CAGE	FLOOR	CAGE	FLOOR
Babcock B-300V	6.07	6.74	256.1	275.7	3.1	1.0	2.36	2.33
Shaver 288	5.52	6.27	245.5	273.1	5.2	3.0	2.44	2.44
DeKalb XL	5.85	5.96	253.3	275.7	2.1	3.0	2.43	2.59
Hisex	6.04	6.43	258.8	268.3	4.2	7.0	2.43	2.36

IMPORTANT NOTICE: We have received several questions concerning Babcock's showing in European Egg Laying tests as advertised in this paper. The Babcock B-300V was not entered in the recently completed Wissinkenke and Putten Laying Tests.



P.O. BOX 280 / ITHACA, NEW YORK 14850 / U.S.A. / PHONE: (607) 272-5990