

Finding the problem, eliminating it, and having the engine run smoothly are all a part of the small engines contest.

Three FFA contests held

KUTZTOWN — Members representing seven regional FFA chapters met recently at Kutztown High School to compete in small engines, salesmanship, and interview contests.

Sweeping the title in the small engine team division was Twin Valley, followed by Kutztown, Northern Lebanon, Cedar Crest, Lebanon Vo-Tech, Elco, and Conrad Weiser. Individual placings were as follows: 1. Howard Griest, Twin Valley; 2. David Reigel,

Kutztown; 3. Russel Unger, Northern Lebanon; 4. Arthur Arnold, Cedar Crest; 5. Troy Matthew, Elco; 6. Daryl Kunkel, Kutztown; 7. Donald Simmers, Lebanon Vo-Tech; 8. Lloyd Huytt, Twin Valley, and Douglas Blaugh, Northern Lebanon, tied; 10. John Kline, Cedar Crest; 11. David Engle, Lebanon Vo-Tech; 12. Ray Noss, Conrad Weiser; 13. Dennis Hachman, Elco; 14. Sam Ferraro, Conrad Weiser.

In Salesmanship first place was awarded to Duane Bowman, Northern

Weaver named supervisor

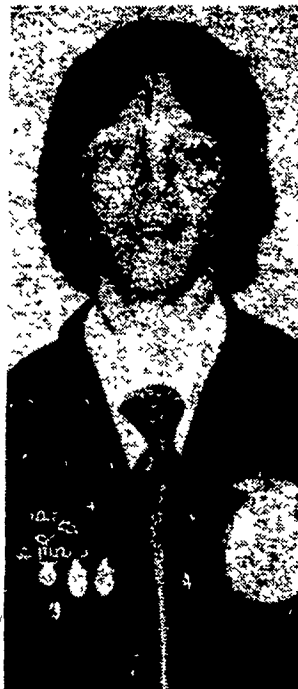
QUAKERTOWN -- Stephen Weaver was recently named breeder flock supervisor for Moyer's Chicks, Inc. Quakertown, Pa. He will be responsible for the overall management and flock inspection of Moyer's broiler and leghorn breeder flocks. Prior to joining Moyer's Chicks, Inc. he shared in responsibilities on the family dairy farm near Shippensburg, Pa. He attended the DeKalb Pathology Service Clinic at DeKalb, Ill. in April.



Stephen Weaver



Larry Shrawder



Duane Bowman

Lebanon, followed by: 2. Michael Balsbaugh, Cedar Crest; 3. Steve Angstadt, Kutztown; 4. Tammy Werth, Lebanon Vo-Tech; and tied for 5. Glenn Wenger, Elco, and Lewis Kohl, Twin Valley.

Placings for the interview contest were: 1. Larry Shrawder, Kutztown; 2. Dawn Shirk, Cedar Crest; 3. Tom Keerns, Twin Valley; 4. Barbara Grand, Lebanon Vo-Tech; 5. Theresa Ebling, Northern Lebanon.

Know Where the Activities Will Be?
Read the Farm Women Calendar.

Announcing

HEISEY FARM EQUIPMENT INC.

AUTHORIZED DEALER FOR

SAME TRACTORS

IN CENTRAL, SOUTHEASTERN PA. & ADJOINING AREAS.

SAME

(PRONOUNCED SAH-ME)

THE 4 WHEEL DRIVE

6 Essentials for True 4-Wheel Drive... SAME Has Them All

To eliminate any one of these items all built into SAME would destroy value and investment in a 4-wheel drive

1. Weight distribution must be built-in at correct position. Note SAME is low, long and wide. Load spread is even.

2. Transmission strong and versatile. SAME gearbox and front drive can take extra torque required with no clutch or break-away device.

3. Epicyclic front gears. Double steering universal for exceptional lock.

4. Hydraulics transfer weight to centre of tractor. SAME lower link sensing achieves this.

5. 4-wheel drive must achieve crawler performance in hills and retain 2-wheel drive versatility.

6. 4-Wheel Drive means 4-Wheel Traction and Braking.

See these models on display
100 H.P. with cab
120 H.P.

Why waste energy on lost traction?
put all your engine power to work
with a SAME tractor

Pronounced SAH-ME



Air Cooled Power With Blower
2 yr. or 3,000 hr. warr. (whichever comes first).

The 4-Wheel Drive Which Was Born To Be So Carries A 2-Year, Or 3,000 Hour Warranty (The First In The Industry).
RANGING FROM 35 TO 120 HP ALL MODELS AVAILABLE IN 4-WHEEL DRIVE.

Compare these facts:

SAME 4-wheel drive tractors are designed from the drawing board up (not an attachment)

SAME Turning circle is small (70 h.p. 14' radius without brakes)

SAME Tractor components are completely x-rayed before assembly making breakages a rarity

SAME Dimensions give stability. Compare low bonnet height, long wide wheel base. Ground clearance excellent.

SAME Transmission designed for load. Front axle capable of full power loads. Epicyclic gears.

SAME Built in Hydro Steering means no rams or hoses with Power Steering.

SAME Are the biggest manufacturers of 4-wheel drive tractors in the world.

SAME Engines are air cooled, meaning—no freezing, no boiling, less wear, less weight above centre of gravity.

SAME Hold world patents on lower arm draft control. Excellent with semi-trailed equipment. Note control positions.

HESSTON FARM EQUIPMENT

SLURRY SPREADER SPECIAL

List Price - \$5,900.00
Discount - 800.00
May Bonus - 450.00
May Price - \$4,650.00



Load, move and spray rich manure slurry and never leave your tractor cab with a Hesston Slurry Manure Spreader. The 2000-gallon capacity 1520 or the 1400-gallon 1510. A self-contained rear loading impeller lets you fill the tank without extra pumps, vacuum tanks and a lot of mess and bother. These machines take about 3 minutes to unload and spread a uniform pattern up to 50 feet. You can profit from a Hesston Slurry Manure Spreader. Ask us how.

SALES & SERVICE

MILLER'S REPAIR

1 Mile North of Bird-in-Hand
8 Miles East of Lancaster
RD1, Bird-in-Hand, PA Phone: 717-656-9013

HEISEY FARM EQUIPMENT INC.

Located just off Rt. 343 1/2 mile S of U.S. 22 at Shirksville, PA

BUS. HOURS:
7 AM to 5:30 PM
Sat. till 12:00 Noon
Evenings By Appt.

PHONE:
717-865-4526 - Business
717-865-2743 - John Moyer, Sales
717-865-4289 - A.C. Heisey