

Pest management report available

DOVER, Del. — Starting in mid-May, Delaware farmers interested in receiving information that will help them control insect and disease problems in their field crops can receive

regular mailings of the 1978 "Integrated Pest Management Report."

This report is published jointly by Extension specialists at the University of Delaware and the

University of Maryland. As in the past, insect activity observed at some 60 blacklight traps throughout the Delmarva peninsula will be reported on a weekly basis during the growing season.

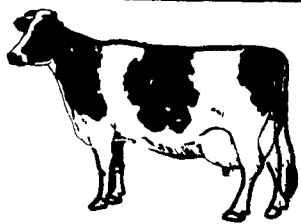
Besides interpreting this light trap data, the report will provide information on how to identify important crop pests and their damage. Growers will be told where and when to look for critical stages of particular pests. Observations of field scouts on pest activity will also be reported.

The report includes the latest information from research on economic thresholds, the best timing of pesticide applications, and alternative control techniques. Disease problems of grower concern will also be reported when noted.

The purpose of the report is to provide up-to-date information on pest problems affecting Delmarva field crops. Pest alerts are issued when outbreaks are either predicted or found to be occurring. In the past, outbreaks of European corn borer, Mexican bean beetle, armyworm, cutworm, corn earworm, and downy mildew have been predicted in time for growers to take effective control action.

The Integrated Pest Management Report is available free to anyone who requests it. It is funded by contributions from recipients. To be placed on the mailing list, one should contact his county Extension office in Newark, Dover, or Georgetown or contact Mark Graustein, Pest Management Specialist, University of Delaware, Newark, Del. 19711.

EVENING SALE SNOWBURG ESTATE MILKING HERD DISPERSAL



Located on Mt. Zoar Rd. off Dutch Hill Rd., 6 miles from Elmira, N.Y. 7 miles from Caton, N.Y. Watch for auction arrows off Rt. 328 at the Caton Exit or off Hendy Hollow Rd. Due to the death of your husband, I will the following on
WEDNESDAY EVE. MAY 10

At 8:00 P.M. Sharp

60-HIGH GRADE HOLSTEINS-60

60 mature cows, 10 cows fresh since Feb., 6 cows handling calves, 14 due Aug. and Sept. 22 checked safe with calf. Cows milking near 50 pounds a day average. Mr. Snowburg tried to produce near the same amount of milk all year, just a good producing herd of cattle. Most of the cows are from A.B.S. sires, a few Eastern and nearly all cows are bred back to top Eastern sires. Interstate tested, preg., ex. If you need replacements, sell your beef at the highest prices ever, and get your replacements at this sale.

Terms: Cash or Good Check
Sale under cover. Lunch Available

Owner:

MRS. SHIRLEY A. SNOWBURG

Auctioneer: Arlow Kiehl

Sales Mgr. - Gordon Wood, Mansfield, Pa.

Phone 717-549-4901

For the most in Advertising coverage and preparing your sale, Call Wood's Auction Service.

PUBLIC SALE

FARM MACHINERY, ANTIQUES,
HOUSEHOLD GOODS
SATURDAY, MAY 27

At 10:00 A.M.

Located from Lanc. East on Rt. 30 to Rt. 82 South to Unionville in Chester Co. Sale located in the Village of Unionville known as Walter L. Hoops Farm. Or South of Rt. 41 to Rt. 926 East to Route 82 at Willowdale East to Unionville.

FARM MACHINERY

FARMALL H & MT. JOHN DEERE TRACTORS

Two bottom JD pick-up & two bottom John trailer plows; 2 walking plows; shovel plow; potato plow; 2 disc harrows; three section spring harrow; peg harrow; land roller; culti 2 horse culti.; corn planter; 3 wagons, rubbered, steel wheel, wooden wheel; NI No. 14A manure spreader; JD No. 3 trailer mower; JD mounted mower; 2 side delivery rakes; NH baler w/engine; Smucker elevator; grain drill; grain cleaner; Wizzard silo blower w/pipe; 2 hole corn sheller; platform scales; saw buck; iron stakes; log chains; bag wagons; hillside hitch; heavy ext. cord; page wire; snow fence; alum. gate & wooden gates (2); calf box; rack for pick-up; tractor tires; double & Single trees; yokes; saw horses; Army & side saddles; harness; 3 feed troughs; feed box; 19 cow jacks; water bowls; cow chains; wheel barrow; 3 oil drums; 2 oil stoves; 2 bath tubs; window sash; tar paper; asp. shingles; step ladder; 30 & 40 ft. ladders; galvi. pipe; lots of tools; 2x8 planks; 8" x 10" 18' oak joyce; clover seed sower; 2 grind stones; buck saw; cross cut saw;

APPROX. 10 TON HAY

ANTIQUES & HOUSEHOLD GOODS

Hay fork & hay rope; 3 old hay knives; milk stool; milk cans; pea & bean scales; dinner bell; iron kettle; old sifter; 2 antiques jacks; lanterns; wooden half bushel; 3 wooden barrels; wooden pulleys; oak rocker; Mars chair; 5 Victorian cane bottom chairs; love seat & chair; 4 solid oak bottom chairs; 2 square oak tables; oval marble top table; kitchen table; mission table; writing desk; dresser; washstand; camel back trunk; ¾ size bed; 2 end tables; record cabinet; porch swing; chunk stove; elec. fan; picture frames; 2 wash bowls; Philco radio table model; shadow boxes; antiques wall hanging clothes rack w/mirror; Victorian wall cupboard; oval mirror and old hanging light.

More items to numerous to mention. Not responsible for accidents day of sale. Refreshments P O - Mar-Lin Fire Co.

Sale by the order of

Barclay L. Rubincam

Auct. Lloyd H. Kreider & Randal V. Kline
Atty. W.J. Scarlett
of Larmore, Scarlett, Myers & Temple

PUBLIC AUCTION

VALUABLE TRUCKS, AUTOMOBILES,
I.H.C. TRACTOR, GARAGE
EQUIP., PARTS, ACCESSORIES,
OFFICE EQUIP., & MISC. ITEMS.
SATURDAY, MAY 20

9:00 A.M.

The undersigned having sold his garage and discontinuing his garage business will offer for sale on the premises ½ mile North of DELTA on the Old Route No. 74 in Peach Bottom T.W.P. Southern YORK COUNTY, PENNA. (arrow signs posted)

TRUCKS - TRACTORS - AUTOMOBILES

1970 Mack Diesel DM 400 Tandem dump truck w/15' bed & P.S.; 1961 Mack Gas B-42 single axle dump w/10' bed; 1971 Ford Model 900 tandem axle 534 engine dump w/14' bed 5 & 4 speed with P.S. Custom cab, radio & heater low mileage; 1965 Ford dual axle Tandem 5 & 4 speed 534 engine w/P.S. & 14' bed; 1971 I.H.C. Tractor single axle 549 engine 5 & 4 speed; 1967 Ford F 1000 tractor 477 engine single axle 5 & 4 speed Wet Line; Fruehauf 33' Tandem Axle flat trailer; Fruehauf 28' single axle flat trailer; IHC No. 100 tractor w/highway mower; 1964 Chev. 4 dr. Bel Air 6 cyle. w/radio & heater 34,000 miles; 1948 Buick Roadmaster 8 cyle. 2 dr. sedan; 1948 Chev. ½ ton 6 cyle. Pick up 3 speed; 2 new 8' pick up truck dump beds; completely rebuilt 534 Ford Engine & heads; 1954 Chrysler Windsor 6 cyle. 4 door sedan, automatic; Farmall H. tractor; 8' Spring Tooth harrow w/ 3 pt. hitch.

GARAGE EQUIPMENT - PARTS

Bada wheel balancer; May tire changer; large air compressor & hose; grease equipment line; air type tire spreader; transmission jack; John Beam head light tester; 4 jack stands; brake lining rivet machine; Heinwerner 1½ ton bumper jack; 3-10 section roller track; Wet line for tractors; chain tightners; chains; Emory wheel w/motor; 2 vises; Marquette 6 & 12 volt battery charger; 5 gal. grease gun; 32' aluminum Ext. ladder; welding table; 12 volt batteries; 5-55 gal. drums of roofing tire; lots of 10.00x20 tires & rims & tub liners; 50 gal. drums w/pumps; antifreeze by the gal. fire extinguishers; oil filters; fan belts; radiator hose; ignition parts; gaskets; brake lining; tail pipes; motor oil; starting fluid; brake fluid; cooling system cleaner; windshield wipers; spark plugs; wax; radiator hose; rope; wiring & cable service kit; tube & tire kits; lights; lots of used tires; misc. tools.

OFFICE EQUIPMENT

McCaskey cash register; Remington adding machine; typewriter; filing cabinets; metal office desk & chair; kerosene heater; coal & wood heatrola; bottle gas heater; oak slant front show case; oak square glass show case; Frigidaire refrigerator; there are many tools, parts and many other items to numerous to mention.

Not responsible for accidents day of sale. All Items Sold As Is.

Lunch served by Mt. Nebo Church.

ORDER OF SALE: small parts & acces, garage equip. office equip. (Trucks, Autos. & Tractors at approximately 12:30) followed by remainder of above items.

TERMS: Cash or Certified Check

Owner

JOSEPH E. WILEY

Delta, Penna.

Auctioneers

Charles W. Shrodes

David W. Shrodes

Ph. (301) 692-5667

996-2424

Dairy council meets

CHAMBERSBURG -- Franklin's County 4-H Dairy Council met April 24 to plan the group's activities for the year.

There is a fitting and showing clinic planned for June 17. It will be held at the fairgrounds, beginning at 10 a.m. A demonstration will be given by professionals first. Then 4-H members will practice grooming, clipping, hoof trimming, and showing, with supervision for each activity.

Plans are also underway for an ice cream social to be held July 13.

The 4-H insurance is due shortly. Rates are \$2 per member.

The next meeting of the group will be May 25. Discussed will be the final plans for the fitting and showing clinic, the ice cream social, summer club tour dates, and the roundup committees.

Horseshoeing course set

UNIVERSITY PARK - The annual horseshoeing short courses of the College of Agriculture, Penn State are scheduled for the month of July. Because of demand two sections will be taught, with a maximum of 24 students accepted in each section. The first course begins June 26 and the second July 10.

The two week course covers all phases of horseshoeing. In addition to the two hour daily lecture, students work on the forge,

trim hooves and shoe horses approximately six hours daily.

Ward Studebaker, licensed horseshoer and University Herdsman, and Dr. Thomas Merritt, Professor of Animal Science, are the principal instructors. Tuition fee is \$350 for Pennsylvanians and \$360 for non-Pennsylvanians.

The daily schedule and application blank can be secured by writing to Horseshoeing, 306 Ag. Admin. Bldg., PSU, University Park, Pa. 16802.



GAP AUCTION

FRIDAY EVE., MAY 12, 1978

5:30 P.M.

Located off Route 41 - Lancaster Avenue opposite Turkey Hill Mint Market - Cross RR Bridge.

ANTIQUES AND HOUSEHOLD GOODS
SOLD AT EVERY AUCTION.

Inspection Friday from 9:00 A.M. until sale time.

CONSIGNMENTS ON MONDAYS

FROM 8:00 A.M. TO 7:00 P.M.

OTHER DAYS BY APPOINTMENT

Call us for pick-up service

IRA STOLTZFUS & SON, Auctioneers

442-4936 or 442-8254

CONDUCTORS ALL TYPES PUBLIC SALES

PUBLIC SALE

OF FARM MACHINERY & EQUIPMENT
SATURDAY, MAY 13

10:00 A.M.

Due to the death of her husband and discontinuing farming, the undersigned will sell at Public Sale on the premises on Ridgeway Ave. Take Baltimore beltway (Interstate 675) to Exit 22, Green Spring Ave., north 3½ miles to Ridgeway Ave., Lutherville, MD.

FARM MACHINERY AND EQUIPMENT

MF 1150 tractor; MF Super 90 tractor; MF 90 tractor; MH 333 tractor; MH 44 tractor; MM 5 star tractor loader; MF 300 combine with cab, grain and corn heads; MF 520 disc; 18 ft., 1 yr. old; MF 127 chisel plow; MF 4 bottom plow, MF 33 grain drill; MF 124 baler; AC 4 row no-till corn planter; NH haybine; NH self unloading bate wagon; field sprayers; MF 15 grinder mixer; MF 95 rotary mower; Clay 500 gal. vacuum tank manure spreader; Calumet 1500 gal. vacuum tank manure spreader, 1 yr. old; GT 375 grain dryer; 10,000 gal. tank; 3000 gal. tank. Miscellaneous farm and hog equipment.

6 SOWS ALL BRED, 1 DUROC BOAR

BINS AND BUILDINGS

Agstar sow castle, 6 sow unit, 2 yrs. old; Agstar pig nursery, 100 pig unit, 1 yr. old; 3 1000 bu. grain bins, 1 10,000 grain bin, 3 ton and 5 ton feed bins.

Terms - Cash

Owner

MRS. DAVID C. GOVER

1122 Ridgeway Ave.

Lutherville, MD

Auctioneer

Sterling Blacksten

Auctioneer not responsible for accidents