

WHAT'S NEW

PRUNING TRACTOR

Lemco produces machines in four sizes for a wide variety of vineyard and orchard pruning tasks. The largest model tractor will span up to 120 feet with overhead booms fully extended, covering up to 14 rows depending upon vineyard planting configuration. A speed range of from three to 80 feet per minute, forward and reverse, delivers compressed air for operating Limb Lopper shears and pruners at precisely the working pace demanded by terrain and type of crop. Units supply pneumatic power to four, six, eight or ten field workers at the same time.

Lemco tractors are most frequently used with overhead booms for grape and berry pruning. However, with booms removed and with hand shears and pruners mounted on Limb Lopper extension poles the machine increases efficiency in pruning citrus,

nuts and deciduous fruits. It also is used for stapling vine support wire to grape stakes employing pneumatic staple guns and is an excellent portable auxiliary air compressor around the farm for spray painting, inflating tires and similar small jobs. Lemco pioneered use of Nycoll plastic hoses for connecting Limb Lopper shears to air lines descending from tractor booms. Filters and one-shot oilers in the air lines to the Limb Lopper shears assure long, troublefree cutting tool life, claims the manufacturer.

Tricycle wheel configuration on the machine aids operating crew in keeping it on course with minimum steering. Forward wheel travels in a furrow which is plowed every 14 or fewer rows depending on vine spacing. Steering may be locked in straight-ahead position giving up to a mile of row travel in a large vineyard with no course correction required. Weighted wheels and water-filled tires provide machine stability. Three-speed transmission and belt-driven regulator control the tractor over steep, hilly terrain as easily as in level vineyards and orchards.

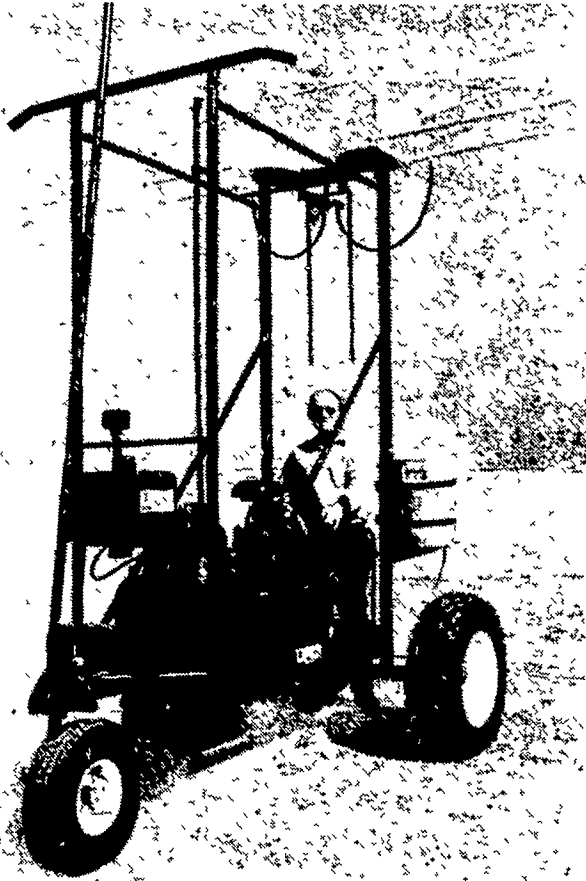
Engine rpm's are constant regardless of speed needed for various terrains and crops. No separate compressed air reserve tank or after cooler is required on the Lemco tractor. Innovative machine design employs the hollow, tubular struts which form the chassis and vertical boom supports to hold air at 160 psi, eliminating the cost and weight of a separate tank. Machines feature 12-volt starter, ample gasoline tank, drinking water and box for spare shears and hand tools.

4-H club begins for handicapped

BAIR — A 4-H club for the mentally handicapped youth between the ages of 8 and 19 will start May 8 at 7:30 p.m. at the 4-H Center near Bair.

The project to be offered is "Tasty Snacks." It involves the preparation of snack foods and some nutrition information. The classes will be held six weeks.

Interested persons should contact Roxanne Price at the Agricultural and Home Economics Extension Service in the York County Court House.



STOLTZFUS MEAT MARKET

We Do The Complete Job With No Middle Man, And Our Prices Are Right.

- FRESH CUT BEEF & PORK
- FRESH EGGS RIGHT FROM THE FARM

We Specialize In FRESH MADE NATURAL CASING SAUSAGE

Orders Taken For Beef Sides; Wrapped And Ready For Your Freezer.

Attention Farmers: We Do Custom Slaughtering For Your Freezer.

PH: 768-7166

Directions: 1 block east of Intercourse on Rt. 772
Reg. Hours: Thurs. 9-5; Fri. 9-8; Sat. 8-5



UNIPEL® 13-34-10

fertilizer can get your corn crop off to a super start:

It has a high concentration of water-soluble Phosphorus that gets to young seedlings quickly. Helps plants establish a good root system — the starting point for top yields. Its quick-acting and long-lasting Nitrogen team up to feed the young plants for full yield potential, continually from sprouting to harvest.

This is the Starter Special that corn growers know from good experience. It's highly effective as a banded starter. And it's SAFE... no chance of ammonia damage to tender, young seedlings when used as a "pop up" and applied directly with the seed at 50 lbs /acre.

How can we fit UNIPEL 13-34-10 into your corn fertility program?



ORTHO FERTILIZERS

Helping the World Grow Better

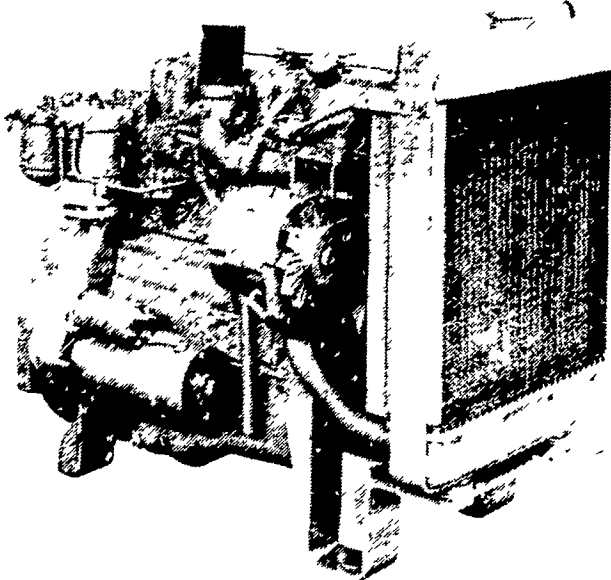
P. L. ROHRER & BRO., INC.

SMOKETOWN, PA.
PH: 717-299-2571

SLANZI, PERKINS, LISTER & BAMFORD DIESELS

- Good Used Diesel Engines SR 2 12 hp. Lister
- New Sputnick Wheels and Parts.

Perkins Diesel Engine D-3-152
25 to 40 HP



NOTICE: HORNING'S WAREHOUSE PHONE NUMBER HAS CHANGED

Call Horning's Warehouse 717-354-4158 or Amos Smucker 717-768-3996
If No Answer Call 717-354-4374

Diesel & Gas

Sales & Service

SMUCKER'S ENGINE SHOP

RD 1, Gordonville, PA 17529