

# Steam power on display next week

By DIETER KRIEG

**KINZER** - The Rough and Tumble Engineers' Historical Association, Inc. is building up a full head of steam for the second of six big events planned for 1978. Dedicated to the restoration and preservation of antique engines and machinery, the Lancaster County organization welcomes anyone "with threshing dust in their blood" to attend.

The big event with which Rough and Tumble is presently engaging itself is the May Steam Up, slated for next Friday and Saturday (May 12 and 13).

According to the association's April newsletter, *The Whistle*, efforts are being made to put some 'zing' into the event. "As always, steam, gas, and hobby exhibitors will form the core of the show. Both the large steam and gas stationary engines will also be in operation," the newsletter announces.

To further enhance the 2-day program, two special events are being planned, says R&T president Amos Stauffer, a veteran machinist and farm equipment dealer from New Holland. On Saturday morning the group will formally acknowledge receipt of a Conestoga Wagon and

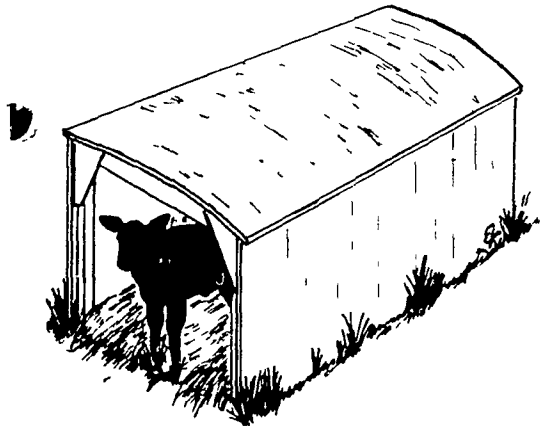
harness which was donated to the organization by Raymond Worst of Gordonville. Although the gift was received by R&T nearly a year ago, no public gesture of thanks had been made so far. On Saturday a team of Elmer Lapp's Belgians will pull the antique wagon from its display area below the gift shop, thereby giving all visitors a chance to see the wagon and team in full glory.

On Saturday afternoon a grand opening is planned for the Shay Railroad. It's a gift from Bruce Groninger.

Other feature events of the May Steam Up include an operating shingle mill, an old plow exhibit, "a belting up contest" with old steam and gasoline powered tractors, an

(Turn to Page 112)

## CUSTOM BUILT CALF HUTS MADE TO ORDER

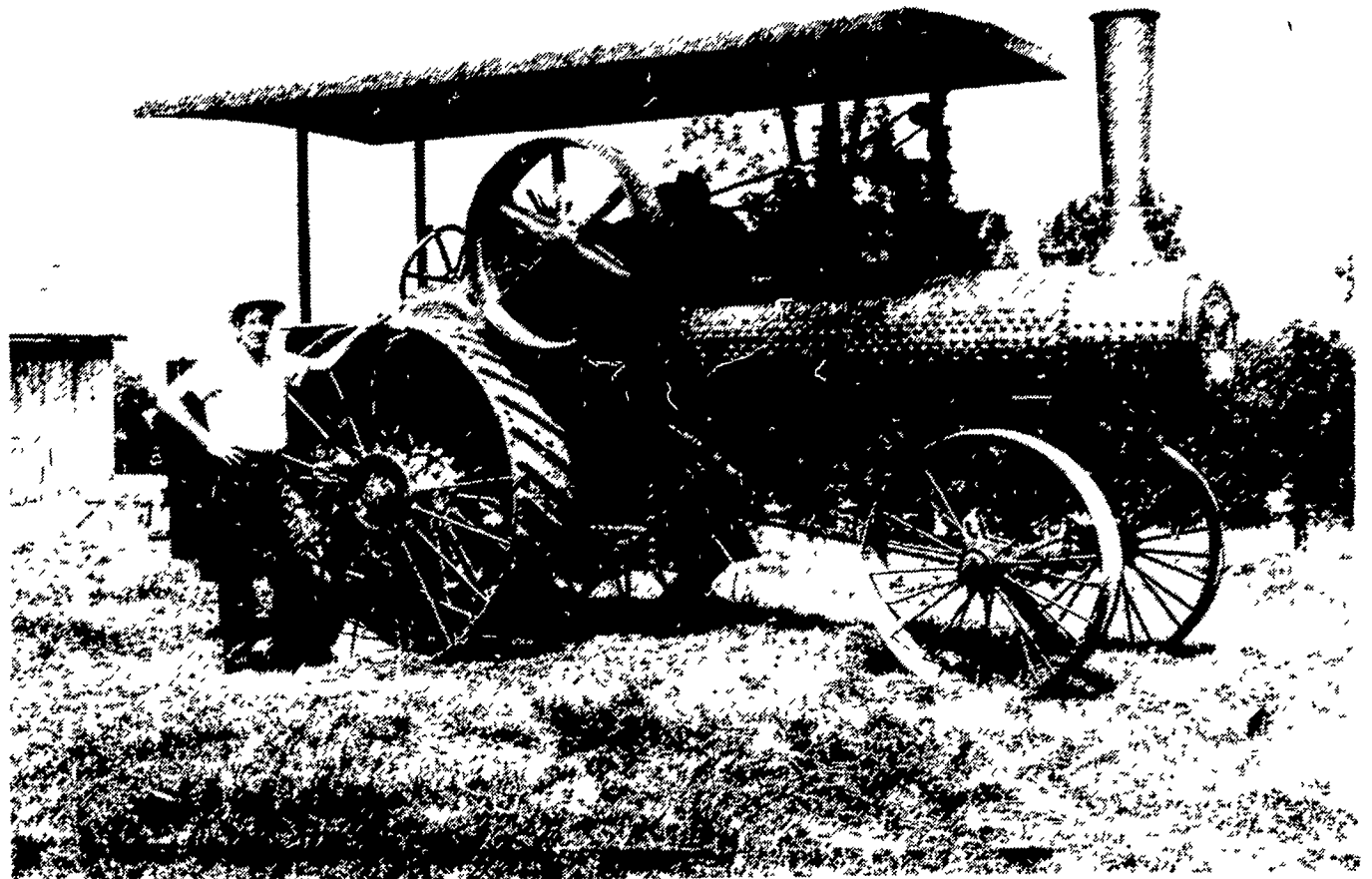


Build a separate pen in front of each calf. Space each pen and calf far enough apart from the next unit to keep each calf separated from its neighbor. This isolation of each unit is very important. It helps prevent the spread of infectious diseases.

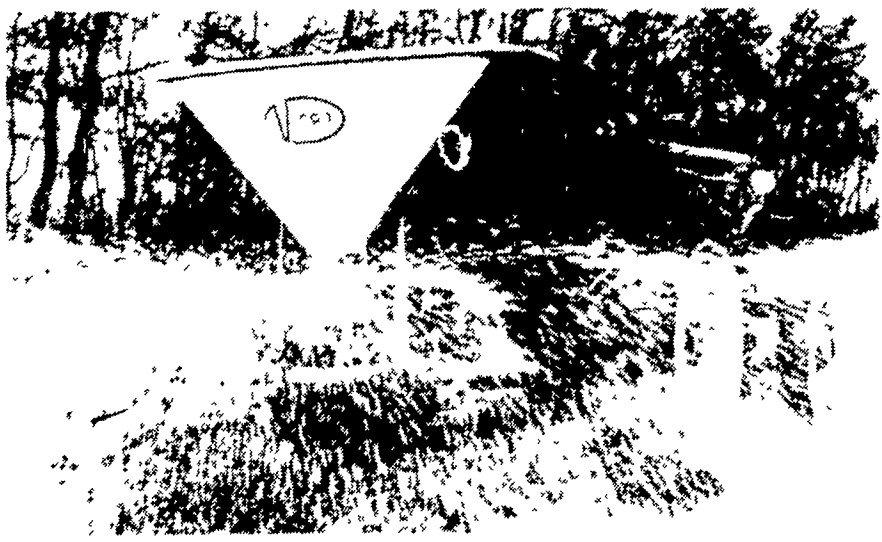
Straw or other suitable bedding is used for the floor. The calf is a proven design that provides a dry, draft-free shelter for the animal. The result is a much healthier calf!

### ELMER M. MARTIN

R.D. 2, Myerstown, Pa.  
PH: (717) 949-2081



Steam tractors such as this one will be "steamed up" on May 12 and 13 at the Rough and Tumble Museum, east of Lancaster. The antique behemoth above is owned by Samuel Kriebel of Montgomery County.



## VICON'S SPREADER HAS WINNING FORM DOWN THE MIDDLE OR ON THE LINE.

Vicon is the spreader/ seeder with the versatility of an Olympic swimmer. One simple adjustment lets you spread fertilizer just over the root zone of a row — skipping the middles. Then with a change time of less than three minutes, you can do conventional broadcast spreading or seeding with winning results. It's also great for applying chemicals or lime.



The Vicon spreader/ seeder has few moving parts. Non-corrosive polyester or heavy duty stainless steel parts resist corrosion and last longer. Hopper capacities range from 600 pounds to 6 tons.

See the Vicon spreader champ in action at your dealer right away. You'll understand why challengers don't have a chance.

**VICON FIELDS THE WINNERS.**



Lancaster County's Only Dealer Specializing in Sprayer Sales & Service.

## LESTER A. SINGER

RONKS, PA PHONE: (717) 687-6712  
OPEN SATS. TILL NOON THRU JUNE 3

## STIHL SAWS HOLD UP

That's because they're designed to last at least twice as long as any other popular saw. Even the so-called "normal wear" parts aren't normal. They keep right on working to make Stihl saws (like the 020 AV Pro shown above) the most reliable chain saws you'll ever get your hands on.

AND  DEALERS

**WON'T LET YOU DOWN.**

**STOLTZFUS WORK**  
RD Gap, PA Box 183  
1 Mile North Rt 897 From Gap  
**WES STAFFER SMALL ENGINES**  
RD 3 Ephrata, PA  
Phone (717) 733-9174  
1/2 Mile South on Rt 322 on  
Pleasant Valley Rd Ephrata Exit New Rt 222

**A & B SALES & SERVICE**  
2 Miles South of Rt 23 Along 772  
Thru Monterey - RD 1 Ronks, PA

**NORMAN H. ZIMMERMAN**  
Myerstown RD 2  
Phone (717) 866-4695  
1/4 Mile West of Myerstown -  
West Main St

Free Demonstration  
Chain Saw - Concrete & Metal  
Saw Rentals

**STIHL**  
The world's largest selling chain saw.