

Food's links to cancer are unsubstantiated

ROSEMONT, Ill. — Cancer is the second leading cause of death in the United States. Based on a survey of studies, it has been shown that environmental factors have been implicated in the development of cancer. Current data are con-

tradictory, however, and no solid evidence is available to single out any component of the diet as either causing or preventing the development of cancer.

Data implicating dietary factors have been based on population studies. But other

aspects of life in such populations would similarly correlate with diseases including cancer. And such correlations do not imply causes. Laboratory studies have similarly been inconclusive. The effect of dietary components — be they fat, cholesterol, protein, vitamins, carbohydrate, fiber, or minerals — on the development of cancer has been shown to vary according to the dose of the component, the animal being fed, and the type of cancer being studied. Dietary components, moreover, are seen as modifiers rather than initiators of tumor growth. And extrapolations

from animals to humans are difficult if not impossible, says the National Dairy Council.

The American Medical Association has stated that there is no need for radical modifications of the diet with respect to cancer. The data, the AMA says, are not conclusive.

To assure consumption of the nutrients necessary for growth and maintenance, and to avoid nutrient imbalances, one should select a wide variety of foods from the four food groups. Each day, foods should be eaten from the milk group, meat group, fruit-vegetable group, and grain group.

Moyer herd heads Schuylkill DHIA

SCHUYLKILL HAVEN — The herd of Wilbert Moyer, Schuylkill Haven R1, produced the highest milkfat in Schuylkill County for the month of March, according to information released by the Pennsylvania State University and J. Allan Shoener, Schuylkill County agricultural agent.

With 35 animals on test, Moyer's cows produced 54.6 pounds of milk per cow per day with 2.14 pounds of milkfat. Taking a close second in butterfat was Heisler Brothers' herd with 2.12 pounds. On 70 cows, this Tamaqua R1 dairy averaged 50.2 pounds of milk per cow per day.

The herd owned by Bruce Leatherman, Tamaqua R1, averaged the highest amount of milk per day with 56.5 on 50 cows and a 2.05 milkfat test.

Twenty-eight cows finished lactation records with 600 pounds of milkfat in March. The records are based on 305 days or less at two times actual production.

Of those 28 animals, three cows produced over 800 pounds of fat. Leatherman, again, came out on top with an animal named Eclipti. She produced 899 pounds of milkfat as well as 22,259 of

milk. Coming right behind her was a cow owned by Miller and Rex, Inc., Andreas R1. "Jill" produced 875 pounds of fat and 18,740 pounds of milk. Third in line for butterfat production was a second cow owned by Bruce Leatherman. "Paula" produced 847 pounds of fat and 20,514 pounds of milk.

Swine club to organize

LEESPORT -- The organizational meeting of the Berks County 4-H Swine Club will be held on Wednesday, April 19 at 7:30 p.m. at the Berks County Agricultural Center.

A slide presentation entitled "The 4-H Swine Feeding Project," will be shown after which the market swine project will be explained by Clyde A.B. Myers, county agent.

Interested youth should be present at the meeting. For more information, call the Penn State Cooperative Extension Service at 215-378-1327.

PUBLIC SALE

ANTIQUES & HOUSEHOLD FURNISHINGS SATURDAY, MAY 20

9:30 A.M.

Located on the corner of West State Street and Summitt Ave. at what is known as 201 West State Street, Borough of Quarryville, Lanc. Co., Pa.

Antiques consist of Victorian sofa, dry sink, 2 corner cupboards, Dutch cupboard, cherry dropleaf table, 6 leg dropleaf table, round table, slant top desk, marble top wash stand, marble top stands, wall table, spool stand, wash stand, night stands, candle stand, marble topped metal stand with copper & brass legs, Boston rocker, ladder back rocking chair with rush bottom, 3 cane seated rocking chairs, platform rocker, other rocking chairs, cane seated chairs, rush bottom chair, 4 spindle back chairs, ladder back chairs, other odd chairs, high chair, child's rocker, stools upholstered chair, Mistress chair, old fashion bed, Swelled front marble top dresser, chest of drawers, bureau, chest, clothes tree, mirrors, coat rack, magazine rack, Victrola, treadle sewing machine, coo-coo clock, old clock, old books, old post card albums, horse blanket, set of Bone china, set of Willow Ware Ironstone China, individual salt collection, bisque figurines, collection of china tea pots, souvenir glass, carnival glass, china plates, 1909 Calendar plates, goblets, vases, cut and pressed glass, large pitchers, Strawberry pitcher, yellow depression glass, Vaseline glass slipper, old bottles, 2 wash bowls and pitchers, bureau set, hat pin holder, iron bank, 2 Spittoons, deep old picture frames, Daisy picture, Sampler Dec. 25, 1877, 2 bracet lamps, kerosene light, hanging lamp, bottom of Gone With Wind Lamp, coffee grinder, old wooden duck decoy, boot jack, crocks and jugs, iron pot, bench, old ice box, and many other articles.

No inspection of any articles prior to day of sale.

Sale by

MRS. ESTELLA R. WIMER

Kersey A. Bradley, Auct.

Kirk & Eschbach, Clerks

Lunch Available

PUBLIC SALES

By order of
WALTER H. STUMP & LANCASTER COMMONWEALTH NATIONAL BANK

Scheduled for
TUESDAY, MAY 2 and TUESDAY, MAY 9
HAVE BEEN CANCELLED
ROBERT SECHRIST, Auctioneer

NEW HOLLAND SALES STABLES FIFTH ANNUAL SPRING GRADE HEIFER SALE

SATURDAY, MAY 20, 1978

10:00 A.M.

Good quality Grade Holstein heifers of all ages from small calves to big fancy springing and fresh heifers. Many heifers bred for summer and fall freshening.

We expect about 1500 grade heifers from local herds with good pedigrees.

For more information to buy or sell at this special sale contact:

ABE DIFFENBACH

354-4341

or **NORMAN KOLB**

397-5538

Notice to consignors - our commission rate is 3 percent. All heifers must have 30 day Pennsylvania health charts and should be eligible for out of state buyers. At last year's sale we sold over 1700 head of heifers to buyers from eight different states.

SPECIAL HORSE SALE



NEW HOLLAND SALES STABLES, INC.

New Holland, Pa.

FRIDAY, MAY 12, 1978

7:00 P.M.

SPECIAL CONSIGNMENTS:

1 load work and driving horses consigned by Ward Wright.

1 load consigned by Steimer Bros.

1 load work horses and mules consigned by Norman Kolb.

1 load driving horses from Noah Martin.

1 load driving horses from Levi. B. Stoltzfus.

1 load driving horses from Clayton Waterbury.

Also some local driving horses.

Drivers hooked at 1:00 P.M.

ABE DIFFENBACH, Manager
717-354-4341

PUBLIC SALE

Jimmy's Nursery OF LANDSCAPE EQUIPMENT NURSERY STOCK SATURDAY, MAY 6

1503 Jay Street, North Lebanon Twp., Lebanon, Pa. Along the road leading from Route 72, Lions Lake to Sandhill.

TRUCKS

1975 GMC 1/2 ton pickup 350 engine A-trans., and top-er, 34,000 miles.

1972 GMC 1500 1/2 ton pickup 350 engine A-trans.

1965 GMC 3/4 ton pickup 6 cyl.

EQUIPMENT

Ford 3000 tractor with loader, Olson landscape blade, Arps 8 ft. stone rake, 6 ft. 3 point disk harrow, Ford posthole digger, 8" and 24" auger, 5 ft. trailer lawn seeder and roller, Gill tractor seeder, 2 AC 212 lawn tractor with mowers and blades, 7 H.P. Homelite lawn tractor, Jari sickle bar mower, 5 Goodall mowers, 3 Gibson mowers, AC self-propelled mower, Goodall self-propelled mower, Power edger, 2-Scott 100-S seeders, Scott 75 seeder, 3 cyclone spreaders, 2-4 H.P. tillers, 2-4 H.P. cultivators, 7 1/2 H.P. cultivators and plow, 2-30 gal. Spartan power sprayers, 2-36 inch aerators, engine powered Ramrod leaf vacuum, Jacobsen snowblower, 7 H.P. irrigation pump with approx. 700 ft. line and sprinklers.

3 point hitch lift boom, knapsack sprayers, edgers, saws, digging iron, sledges, 36 ft. aluminum extension ladder, 20 ft. wood extension ladders. 2 wheelbarrows, 6 and 8 ft. stepladders, rakes, forks, shovels, and numerous other items.

TREES AND SHRUBBERY

120 trees 6-12 ft. Birch, Red Maple, Pin Oak, Sweet Gum, Honey Locust, Flowering Cherry.

400 shrubs, upright and spreading yews, yellow, green and globe arborvitae and numerous other shrubs.

Also articles of household furnishings.

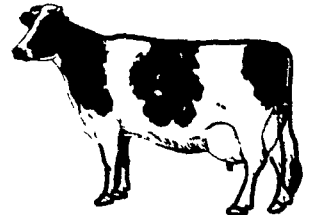
Sale to commence at 10:30 A.M.

Conditions by

JOSEPH A. CIKOVIC, Owner

Auct. Earl S. Buffenmeyer

EVENING SALE SNOWBURG ESTATE MILKING HERD DISPERSAL



Located on Mt. Zcar Rd. off Dutch Hill Rd., 6 miles from Elmira, N.Y. 7 miles from Caton, N.Y. Watch for auction arrows off Rt. 328 at the Caton Exit or off Hendy Hollow Rd. Due to the death of your husband, I will the following on

WEDNESDAY EVE. MAY 10

At 8:00 P.M. Sharp

60-HIGH GRADE HOLSTEINS-60

60 mature cows, 10 cows fresh since Feb., 6 cows handling calves, 14 due Aug. and Sept. 22 checked safe with calf. Cows milking near 50 pounds a day average. Mr. Snowburg tried to produce near the same amount of milk all year, just a good producing herd of cattle. Most of the cows are from A.B.S. sires, a few Eastern and nearly all cows are bred back to top Eastern sires. Interstate tested, preg., ex. If you need replacements, sell your beef at the highest prices ever, and get your replacements at this sale.

Terms: Cash or Good Check

Sale under cover. Lunch Available

Owner:

MRS. SHIRLEY A. SNOWBURG

Auctioneer: Arlow Kiehl

Sales Mgr. - Gordon Wood, Mansfield, Pa.

Phone 717-549-4901

For the most in Advertising coverage and preparing your sale, Call Wood's Auction Service.