

Livestock market and auction news

Des Moines Carlot

April 26, 1978

Compared to Tuesday's close fresh pork cut trade and demand moderate to good. Fresh loins steady; picnics 75 lower; Boston butts steady; spareribs no comparison available; skinned hams steady to 1.75 higher; bellies steady to 2.00 higher. Loads 94.

Fresh Pork Cuts

Loins 14/dn lbs. 91.50; 94.00-94.25 trimmed steady; 14-17 lbs. 90.50, steady; 17-20 lbs. 86.00 trimmed; 20 & up lbs. 82.00 steady. Picnic 4-8 lbs. 52.00; 54.00 trimmed, 75 lower. Boston butt 4-8 lbs. 68.25-68.75 steady. Spareribs 3/dn lbs. 111.00; selected 113.00-115.00. Skinned hams 14-17 lbs. 73.00-73.75; 17-20 lbs. 72.00-73.00, 50-1.50 higher; 20-26 lbs. 71.50-72.25, 1.00-1.75 higher; 26 & up lbs. 69.00, steady. Bellies, sds 12-14 lbs. 66.50-68.00, mostly 66.50, 75-2.00 higher; 14-16 lbs. 66.00, 1.00-1.50 higher; 16-18 lbs. 64.00, steady to 1.75 higher; 18-20 lbs. 61.50-63.00, 1.25-1.75 higher. Pork Trim 50 per cent lean 55.00; 80 per cent lean 78.75; 79.00 frozen. Neck Bones 15.50-16.00. Offal & Variety: Livers 13.50, stomachs 3 lbs. 17.00; Feet 17.50-19.00.

Compared to Tuesday's close beef trade moderate,

demand moderate to light. Choice steer beef steady to 1.00 higher; Choice heifer beef mostly steady; instances 1.00 lower on few early sales. Canner and cutter cow beef steady; primal beef cuts not established. Sales reported on 42 loads of carcass beef.

Steer Beef 21 Loads

Choice 3 600-800 lbs. 81.00-82.00 (Including packer-packer trade) steady to 1.00 higher; Choice 3 800-900 lbs. 82.00-82.50; Choice 2 600-800 lbs. 83.00; Choice 3 550-700 lbs. 82.00 trimmed and selected-late Tuesday.

Heifer Beef 18 Loads

Choice 3 500-700 lbs. 79.25-80.25, mostly 80.25; mostly steady, inst 1.00 lower on few early sales.

Cow Beef 3 Loads

Canner & Cutter (nthrn) 76.00, load 77.00 steady. Boneless processing beef 75 pct chem lean 86.00 frozen; 85 pct chem lean 96.00 frozen; 90 pct chem lean 105.00 fresh.

Choice 3 Primal Beef Cuts 1 Load

Rounds (steer) 35-70 lbs. 84.25. Beef trimmings 50 pct lean frozen 56.00-57.00.

Carlisle Auction

Carlisle, Pa.
April 25, 1978

CATTLE 205. Compared with last Tuesday's market; Good slaughter steers 46.25-50.25, Standard 43.00-46.85, Utility 36.50-42.00. Good slaughter heifers 44.25-47.00, Standard 37.00-43.00, Utility 29.00-36.75. Utility & Commercial slaughter cows 39.00-42.75, Cutters 37.00-40.25, Canner & Low Cutter 36.00-38.00, Shells down to 28.00. Good slaughter bullocks 42.60-48.00, Standard 37.50-41.75.

CALVES 129. Choice vealers 60.00-77.50, Standard & Good 110-130 lbs. 45.00-65.00, Standard & Good 70-90 lbs. 35.00-50.00, Utility 28.00-38.50.

HOGS 312. US No. 1-2 200-240 lbs. barrows & gilts 46.10-47.50, No. 1-3 44.50-46.00, No. 2-3 185-230 lbs. 39.00-44.00. US No. 1-3 300-500 lbs. sows 38.50-41.00, No. 2-3 300-600

lbs. 32.00-37.50. Few Boars 31.00

FEEDER PIGS 161. US No. 1-3 30-45 lbs. feeder pigs 22.00-29.00 per head, No. 1-3 40-60 lbs. 37.00-51.00 per head.

SHEEP 48. Choice spring slaughter lambs 80.00-101.00, Good 55.00-85.00.

Special Market

Special Feeder Calf
And Yearling Sale
Orange, Va.
April 20, 1978

There were 401 head sold. All cattle were graded by Representatives of the VDAC's Division of Markets, Livestock Section on VDAC standards and sold by the hundredweight.



HAY, STRAW & CORN

— SALE —

Every Friday at 12 Noon



GREEN DRAGON MARKET & AUCTION

RD No. 4 Ephrata, Pa. 717-733-2334
1 mile North of Ephrata on N. State St.
Out of State Buyers - Cash or Certified Check Only.

Double your profits from sheep without spending a cent.



We bleed sheep at your farm for laboratory blood sample use Sterile, simple method You do nothing but collect on number of sheep bled Absolutely no harm to your sheep We presently bleed over 20 different flocks (References upon request) A limited number of additional flocks are needed to meet our current, growing demands

Call Day or Evening:
215-345-1483 Ask for Craig or Greg

LAMPIRE ENTERPRISES
977 Limekiln Road, Doylestown, PA 18901

ATTENTION FARMERS!!

CIBA-GEIGY AATREX

FURADAN 10-G

DYFONATE 20-G

SUTAN+, LASSO, ETC.

MEDINA

For greater root system, looser soil, less water run off, increased yields University data available More than 15 years of proven performance Medina has been used on all types of crops and soils - in almost all of the United States and in 25 foreign countries

Check our Prices before you buy.

MELVIN R. WEAVER

2213 Leabrook Road, Lancaster, PA. 17601
PH: 717-898-8354 or 569-6576

STEERS

Choice: 300-500 lbs. 64.00-65.50; 501-700 lbs. 57.25-62.00; 701-800 lbs. 53.50-54.50; 801-1000 lbs. 51.50-52.75.

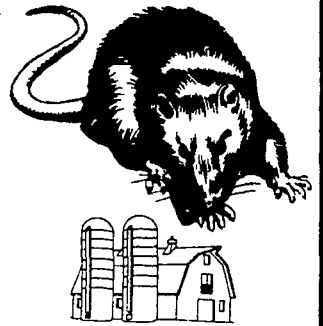
Good: 300-500 lbs. 62.50-68.25; 501-700 lbs. 53.75-59.00; 701-800 lbs. 52.75-54.75; Medium: 300-500 lbs. 58.50-62.00; 501-700 lbs. 50.00-56.50. Short: All Weights - 47.75.

HEIFERS

Choice: 300-500 lbs. 47.50-51.00; 501-600 lbs. 46.75-48.00; 601-700 lbs. 46.25-47.00.

Good: 300-600 lbs. 48.50-50.00; 500-600 lbs. 47.50-47.75; 600-700 lbs. 46.00-46.50. Medium: 300-500 lbs. 47.00-49.00; 500-600 lbs. 44.25-46.00. Short: All weights 47.00-47.25.

ATTENTION FARMERS... FREE ESTIMATES ON RODENT CONTROL

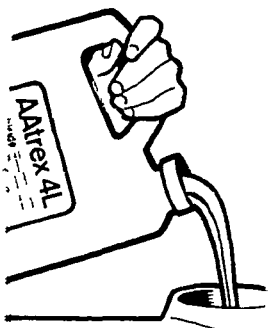


RODENTS carry diseases which can endanger the health of your flocks. Your business is raising the flocks. Ours is protecting them.



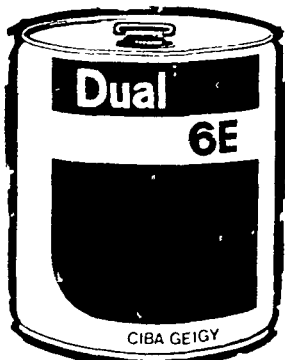
1278 Loop Rd.
Lancaster, Pa. 17604
717-397-3721

Since 1928
Pest control is too important to trust to anyone else



Convenience in a jug Liquid AAtrex 4L

Open the cap. Pour it in the tank. And go.
(No bags. No dust. No waiting.)



NEW DUAL®
STRONG GRASS HERBICIDE FOR CORN

Controls weeds longer than other grass killers. Even controls yellow nutsedge (northern nutgrass). High concentration for more acres per can-fewer cans to get rid of

WHITE HORSE GRAIN COMPANY

Elevator Warehouse
RD2, Cochranville, PA Russellville, PA
215-869-8201 (Bob) 215-932-3307 (Dick)



hisex

doesn't win

Every Pennsylvania Cage
Random Sample Test
1977 Hisex 2nd
1976 Hisex 1st
1975 Hisex 1st

But In The Last 3 Years

Hisex Averaged
37¢ IOFC Over Shaver
83¢ IOFC Over Babcock
(THE MOST CONSISTENT LAYER ON THE PENNSYLVANIA MARKET)

L & L HATCHERY
OF LANCASTER, INC.

RD 4, BOX 181C
MANHEIM, PA
17545
(717) 665-7014
(717) 626-8257

BATINKOFF
HATCHERY

BROOKS ROAD
FERNDAL, NY
12734
(914) 292-6850