

Lancaster Co. DHIA

(Continued from Page 128)

OWNER	NO. COWS	% DAYS IN MILK	LBS. MILK	% FAT	LBS. FAT	
Melvin J. Martin						
Tanya RH	8-9	305	17,320	3.8	657	
Richard W. Barge AWT9934	GrH	5-2	283	15,842	4.1	657
Donald M. Eckman	GrH	4-9	305	18,623	3.5	656
J. Rohrer Witmer	RBrSw	11-0	305	17,308	3.8	656
Ginger						
Earl E. Martin	RH	6-4	305	17,295	3.8	656
Barbie						
S.R. Shellenberger	RH	5-7	305	16,444	4.0	656
Robin						
Walnut Run Farm	RH	5-8	305	19,863	3.3	653
5 Bre						
M. Irvin Eberly	RH	6-7	298	17,828	3.7	653
Sallie						
Raymond M. Weaver	RH	5-0	255	15,630	4.2	653
31						
Sunny Craft Farm	RH	6-5	305	16,583	3.9	651
Maxie						

OWNER	NO. COWS	% DAYS IN MILK	LBS. MILK	% FAT	LBS. FAT
Tom McMillon					
R&GrH	9.4	100.4	65.0	3.7	2.42
Robert Kauffman Jr.					
R&GrH	87.4	91.4	56.4	4.1	2.29
Curtis E. Akers					
RH	59.5	92.6	57.9	3.9	2.28
David B. King					
RH	32.4	93.0	52.1	4.3	2.26
Robert L. Shelly					
R&GrH	33.2	97.8	54.3	4.1	2.23
Samuel E. Beiler					
R&GrH	47.4	89.6	57.1	3.9	2.23
Robert H. Kauffman					
RH	36.0	95.7	52.9	4.2	2.22

Flea market set in May

MOUNT JOY - The Mount Joy Business and Professional Women's Club will sponsor a Flea Market in Mount Joy on May 27.

1978, from 10 a.m. to 5 p.m. on South Delta Street, between E. Main and Henry Streets.

The Flea Market is one of the many activities planned for the Memorial Day weekend. The Annual parade will also be held May 27.

Antique dealers, or anyone interested in selling their "attic treasures" or collectibles are invited to rent a space at the Flea Market for a small fee.

The Flea Market is being held for the benefit of the B.P.W. Scholarship Fund and the Mount Joy Community Council who is planning the Memorial Day activities.

Anyone interested in learning more details of the Flea Market may call Mount Joy 717-653-4816 or 717-653-4941.

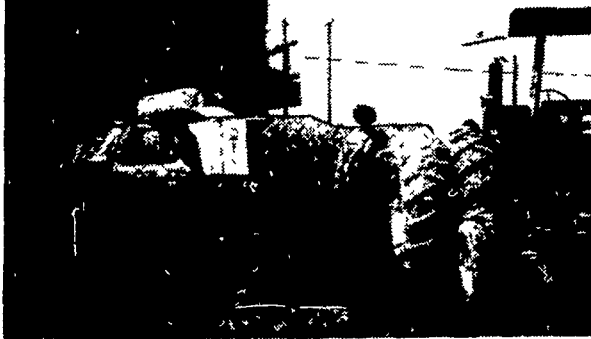
Mervin Sauder	R&GrH	37.0	90.8	60.3	3.7	2.22
John M. Weaver & Son	Mix	79.6	92.6	55.9	4.0	2.21
Samuel I. Esh	RH	37.9	98.8	55.6	3.9	2.19
Vernon R. Umble & Son	R&GrH	65.5	91.8	53.4	4.1	2.19
John E. Fisher	R&GrH	29.0	91.3	61.4	3.5	2.17
Clarence W. Shirk	R&GrH	20.1	100.0	61.0	3.5	2.16
Reuben L. Stoltzfus	R&GrH	33.1	91.4	53.8	4.0	2.14
J. Wilmer Eby	R&GrH	78.6	88.3	54.0	3.9	2.13
Samuel E. Beiler	R&GrH	46.3	86.5	54.7	3.9	2.13
Dan S. Stoltzfus	R&GrH	50.7	90.3	53.9	3.9	2.12
Paul D. Welk	R&GrH	67.0	92.7	55.5	3.8	2.12
Christian Zook	R&GrH	45.7	87.1	52.2	4.0	2.09
Amos F. Miller	Mix	32.3	97.2	59.2	3.5	2.09
Meadow Vista Farm	Mix	120.4	91.3	52.3	4.0	2.09
Paul H. Martin	RH	36.3	85.0	57.7	3.6	2.05
Hiram S. Aungst	Mix	46.8	92.6	50.8	4.0	2.05
Robert F. & Joan B. Book	R&GrH	66.4	97.3	54.0	3.8	2.05
Roy C. Neff	R&GrH	65.2	86.6	49.6	4.1	2.04
Allan R. Shoemaker	RH	47.0	94.6	54.6	3.7	2.04
Earl N. Landis	R&GrH	48.9	87.7	54.4	3.8	2.04
Harold G. Shelly	RA	13.0	94.4	47.6	4.3	2.04
R. Edwin Harnish	R&GrH	39.7	86.2	48.1	4.2	2.03

(Turn to Page 130)

CALL US FOR "ON-THE-SPOT" FARM TIRE SERVICE

IN-THE-FIELD AT-THE-FARM ON-THE-ROAD

Our fully equipped farm service trucks and skilled repairmen bring you fast on-the-spot tire REPAIRS, REPLACEMENTS and HYDRO-FLATION WHEN AND WHERE YOU NEED IT



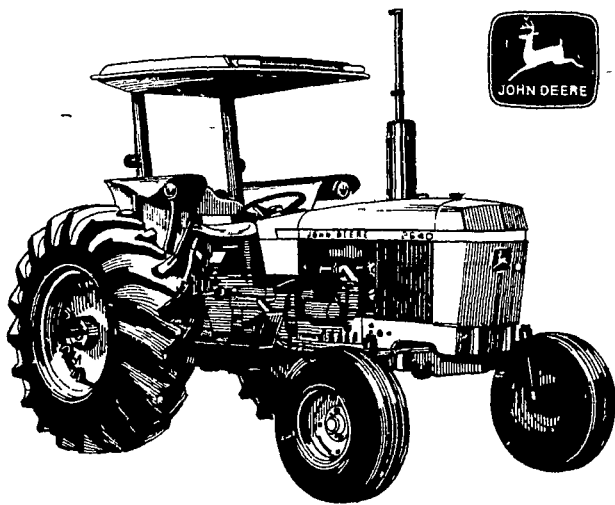
Our trucks are radio controlled for faster service when you need it!

SWEIGART TIRE SERVICE

677 W. HIGH ST.
MANHEIM, PA

PHONE: 665-2258
HOME: 665-3603

John Deere Tractors 40, 50, 60, 70, 80 hp



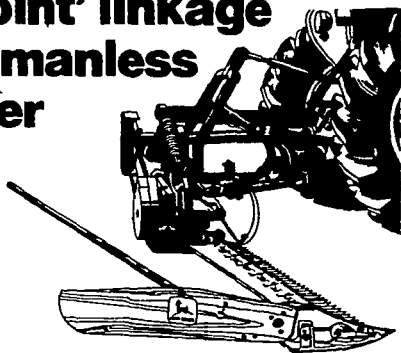
High-torque diesel engine

High torque—some folks call it "lugging ability" These John Deere Tractors feature high-torque diesel engines—engines that offer excellent torque reserve for plowing sticky gumbo baling in hilly hayfields shredding dense crop residue, or other jobs that could stall other tractors

These heavy-duty John Deere-designed-and-built diesel engines deliver the torque you need to stay on the move through those tough spots with little hesitation or need to downshift

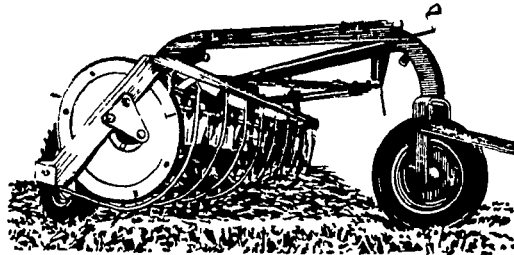
Stop in soon for more information on these John Deere Tractors with dependable 3-, 4-, and 6-cylinder diesel engines Engines with high torque—some folks call it "performance"

Discover the unique 'fourth-point' linkage on our pitmanless 350 Mower



The 350 attaches to your tractor's 3-point hitch and (with a chain) to the drawbar This unique fourth-point linkage and double framing provide faster, higher cutterbar lift It's simple and quick to hook up

There's an 8½-foot 660 Rake here... set up just for you

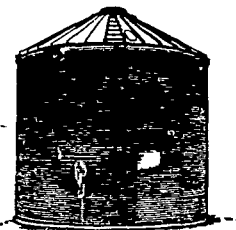


Rake all the hay laid down by a 9-foot mower or 9-foot mower-conditioner And do a good job of it with a 660 Rake You get five bars, and rubber-ball-joint teeth are standard

With Stormor Your Grain Never Had It So Good!

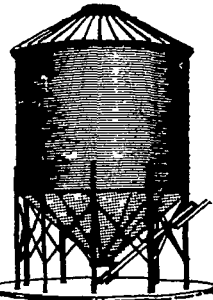
GRAIN BINS

- Heavy-gauge steel construction
- Vac-U-Vent ventilation
- Weathertight seals
- Capacities to 152,000 bu



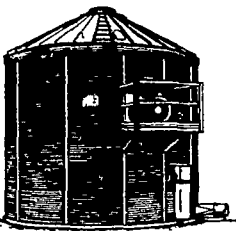
HOPPER TANKS

- Holds wet grain at harvest, feed and supplement year-round
- Diameters from 6 to 18 ft
- Heights from 10'4" to 43'5"
- Capacities from 112 to 3,921 bu



EZEE-DRY

- The patented overhead drying floor uses all available heat to keep your drying costs low
- Drying capacities to 12,000 bu at 10 pts per hour
- In-bin storage capacities to 16,000 bu



Get the most out of your grain production. Let Stormor handle it! Come in today for a free estimate on the system that meets your needs.

— Check This Used Equipment —

- Farm Fans Model FFC1024B, 10 H.P. 1 Ph. 24" Centrifugal Fan
- 600E, MC Dryer w/Bulk Tank & Augers, Continuous Flow, Electric Motor Drive, 3 Ph.
- 400E, MC Dryer, Continuous Flow, PTO Drive
- New Idea 8" x 51' Transport Auger, PTO Drive w/Hopper
- 7½-9 H.P. 1 Ph. Circle Fan Heater Unit
- Wyatt 8 x 61' Transport Auger, PTO Drive w/Hopper

Loecks

GRAIN EQUIPMENT, INC.
Box 216, RD 12,
York, PA 17406

NEW # - (717) 755-2868

STORMOR

LANDIS BROS. INC.
Lancaster, PA
717-383-3906

ADAMSTOWN
EQUIPMENT INC.
Mohnton RD2, PA 19540
(near Adamstown)
215-484-4391

PIKEVILLE
EQUIPMENT INC.
Oyster Dale Road
Oley RD2, PA
215-987-6277

NEUHAUSE'S INC.
RD2, York, PA
1-83 Loganville Ext. 3
717-428-1953 or
235-1306

SHOTZBERGER'S
EQUIPMENT
Elm, PA
717-665-2141

A.B.C. GROFF INC.
New Holland, PA
717-354-4191

ROBERT E. LITTLE INC.
Zieglerville, PA
215-287-9643

STANLEY A. KLOPP
INC.
Bernville, PA
215-488-1510

KERMIT K. KISTLER
INC.
Lynnport, PA
215-298-3270

M.S. YEARSLEY
& SONS
West Chester, PA
215-696-2990

AGWAY INC.
Chapman Equipment
Center
Chapman, PA
215-398-2553

I.G.'s AG SALES
Silverdale, PA 18962
215-257-5136