

Lancaster Co. DHIA

(Continued from Page 126)

Harry H. Ranck Jr.						
Jill	RH	7-8	305	20,149	3.6	717
Jane	RH	6-9	305	19,233	3.7	703
Kay	RH	4-5	305	18,515	3.5	657
Lenewood Farm						
Sue	RH	6-1	305	19,728	3.6	717
Bertha	RH	3-0	305	16,210	4.3	689
Jacob M. King						
Sadie	GrH	7-5	305	21,402	3.3	715

Paul H. & Marvin Herr						
Hattie	RJ	6-11	305	14,779	4.8	715
4	GrJ	15-6	305	15,248	4.6	694
Hiram S. Aungst						
Phyllis	RH	2-2	305	16,617	4.3	714
Carl E. Brandt						
14	GrH	6-1	305	20,263	3.5	707
28	GrH	3-8	305	18,190	3.7	670
David W. Bitler						
Becky	GrH	5-6	305	18,912	3.7	707
Harry S. Aungst						
Jewel	RH	4-10	305	17,872	4.0	706
Danda Farms						
Aiden	RH	6-4	305	19,924	3.5	705
Opal	RH	3-4	305	18,972	3.7	701
Kitty	RH	4-7	305	19,313	3.5	669
Goldie	RH	3-3	305	15,689	4.2	654
H. Landis Weaver						
Kingpin	RH	8-9	305	19,281	3.7	705
Bennie L. Fisher						
Alta	GrH	5-6	305	19,967	3.5	704
Ray P. Bollinger						
Sheila	RH	8-1	305	17,134	4.1	704
Samuel F. Long						
Brenda	RH	5-7	305	16,848	4.2	704
Marvin Reed						
Lori	RH	9-9	305	17,074	4.1	703
Harvey E. Heller						
67	GrH	9-6	305	21,240	3.3	702
79	GrH	5-11	305	16,242	4.0	652
Edwin J. Landis						
Starlet	GrH	3-7	305	23,501	3.0	701
Kelly	GrH	3-3	305	19,373	3.5	679
Melvin H. Ranck						
Patches	RH	7-5	305	22,928	3.1	700
Jessie	RH	4-6	305	11,165	3.1	653
Paul S. Horning						
Sweetie	RH	6-6	305	19,545	3.6	700
John S. Wenger						
31 Lynn	RH	4-2	305	15,889	4.4	700
Eli K. Glick						
Judy	GrH	4-3	305	18,228	3.8	699

Lancaster Farming, Saturday, April 29, 1978-127

John B. Groff						
Sheila	RH	8-6	305	16,921	4.1	699
William P. Arrowsmith						
Holly	RJ	12-3	305	14,203	4.9	699
Quelletal Farm						
15 Conn	RH	4-7	305	17,185	4.1	698
80	GrH	3-3	305	19,341	3.4	662
Marvin S. Nolt						
98	RH	5-11	305	17,114	4.1	698
Fred Crider						
Dandel	RG	4-6	305	12,335	5.7	697
Patty	RG	6-1	305	14,576	4.5	658
John F. Petersheim						
81	RH	7-3	305	15,691	4.4	696
Christian G. Becker						
123	RH	7-6	305	18,559	3.7	695
Richard N. Sauder						
Connie	RH	9-6	305	18,271	3.8	695
Glenn P. Book						
Delores	RH	6-8	305	18,017	3.8	693
Bloom	RH	3-3	305	20,347	3.4	683
B. Robert Charles						
Cherle	RH	4-9	305	17,501	4.0	693
Abram & John Barley						
176	RH	4-0	305	16,755	4.1	693
James F. Brubaker						
68	GrH	4-6	305	18,695	3.7	691
Cedar Fringed Farm						
Martena	RG	2-2	305	13,961	4.9	689
Willis M. Martin						
Dolly	RH	10-1	305	14,473	4.7	684
Arlin L. Balmer						
Moane 29	GrH	3-2	305	18,201	3.8	683
Robert M. Mylin						
Mim	RH	5-6	305	15,862	4.3	682
Nathan G. Stoltzfus						
Honey	RH	3-5	305	15,087	4.5	682
John S. Beiler						
Goldy	GrH	3-3	305	18,773	3.6	681
Ann	GrH	6-3	305	20,365	3.3	676
Alice	GrH	4-10	305	16,201	4.1	662
Ressler & Stoltzfus						
Jolly	RH	2-6	305	17,055	4.0	681
Queen	RH	4-8	305	18,246	3.7	671
J. Ray Ranck						
Linda	GrH	5-7	305	16,831	4.0	681
Jonas E. Zook						
Dean	RH	8-6	305	16,397	4.2	681
Jay E. Landis						
Reflect	RH	9-7	305	15,469	4.4	681
Samuel B. Lapp						
Karen	RH	10-2	305	18,257	3.7	680
Ann	RH	9-1	231	15,834	4.1	653
Nelson H. Wenger						
Faith	RH	3-8	305	17,064	4.0	670
Dona	RH	3-5	365	17,829	3.7	664
Robert W. Ulrich Jr.						
Barb	RJ	3-3	305	12,229	5.6	679
Masonic Homes Farms						
Angel 22	RA	3-5	305	16,021	4.2	678
Fange	RA	5-11	305	15,643	4.3	669

(Turn to Page 128)

**Plywood Feed Bins - Will Install
Bale Thrower Wagons
Wagon Beds and Gears
Feed and Silage Carts
Farrowing Crates
Pipe and Panel Gates
2-16 Hole Hog Feeders
Outside Calf Hutches
Stihl Chain Saws
Barb & Woven Wire**

STOLTZFUS WOODWORKING

RD2 Gap, PA. Box 183
1 Mile North Rt. 897 From Gap

**Pre-emergence tank-mix
combination controls both
grassy and broadleaf weeds**

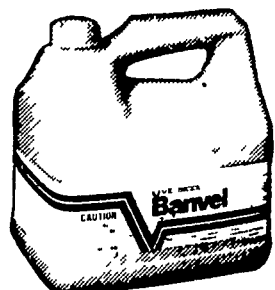
Banvel® + Lasso®*



**a giant first step toward total
weed control in field corn**

Successful on millions of acres where corn is the major crop, the Banvel + Lasso herbicide combination can give you "near perfect" (90-100 percent) control of a wide spectrum of grassy and broadleaf weeds, when used according to label directions.

Banvel + Lasso herbicide is compatible with most fluid fertilizers. It needs no



DISTRIBUTED BY:

P. L. ROHRER & BRO., INC.

SMOKETOWN, PA.

PH: 717-299-2571

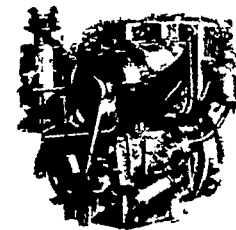
incorporation. There is no carryover.

Take a giant step toward total weed control. Call about the Banvel + Lasso combination. Remember, the "near perfect" herbicide is the one you build...starting with Banvel herbicide...from Velsicol.

*The combination is effective on all major soil types except light sandy soils. Lasso is a registered trademark of Monsanto Company

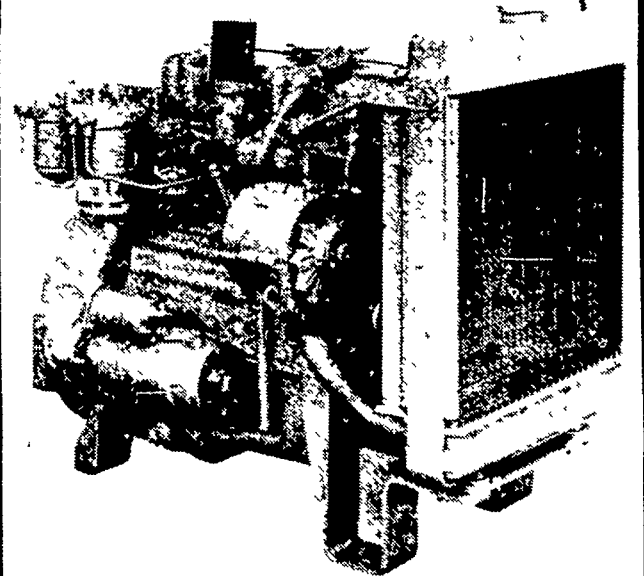
To achieve best results be sure to read understand and follow the label

SLANZI, PERKINS, LISTER & BAMFORD DIESELS



- Good Used Diesel Engines SR 2 12 hp. Lister
- New Sputnik Wheels and Parts.

Perkins Diesel Engine D-3-152
25 to 40 HP



**NOTICE: HORNING'S WAREHOUSE
PHONE NUMBER HAS CHANGED**

Call Horning's Warehouse 717-354-4158 or
Amos Smucker 717-768-3996
If No Answer Call 717-354-4374

Diesel & Gas

Sales & Service

SMUCKER'S ENGINE SHOP

RD 1, Gordonville, PA 17529